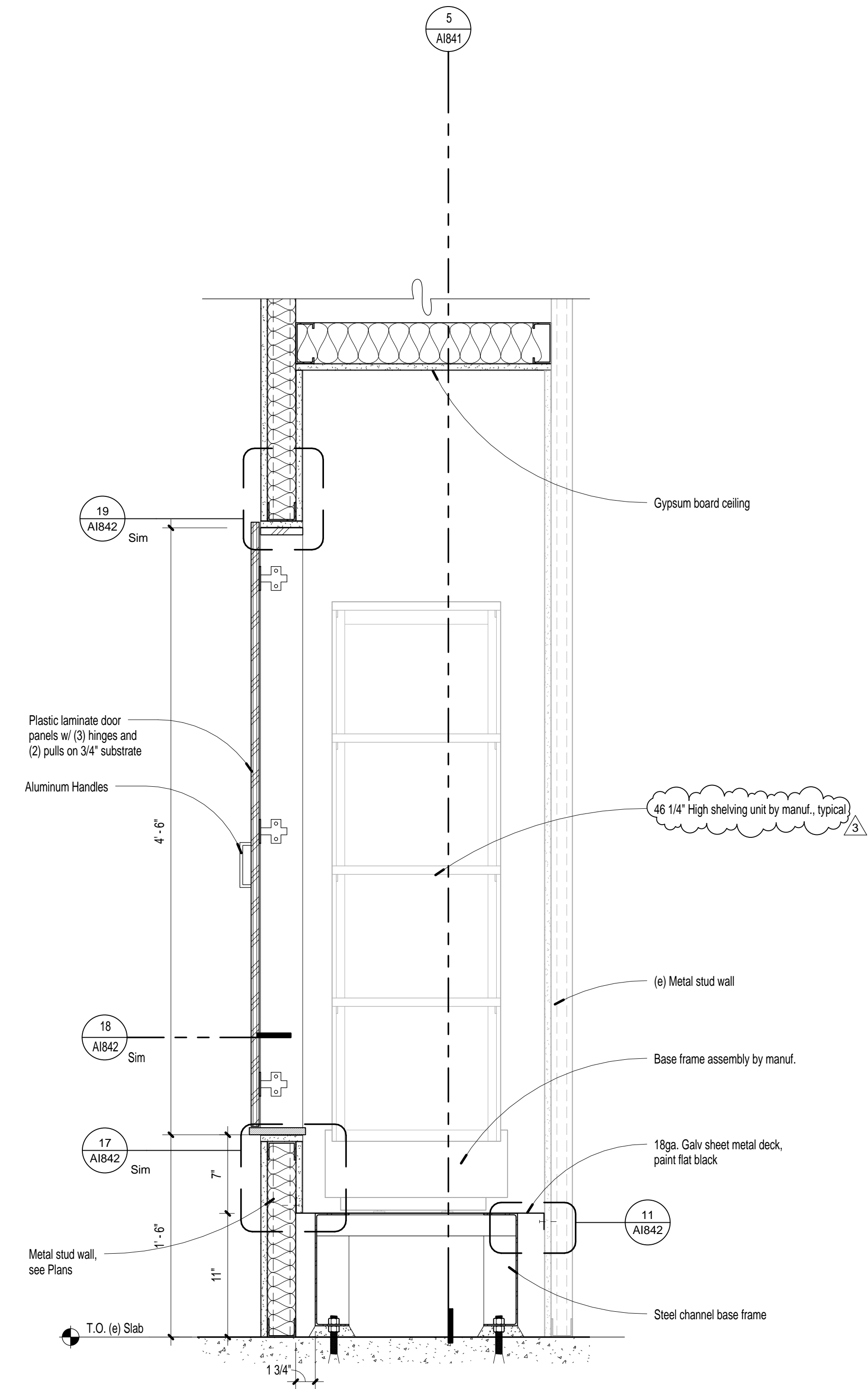
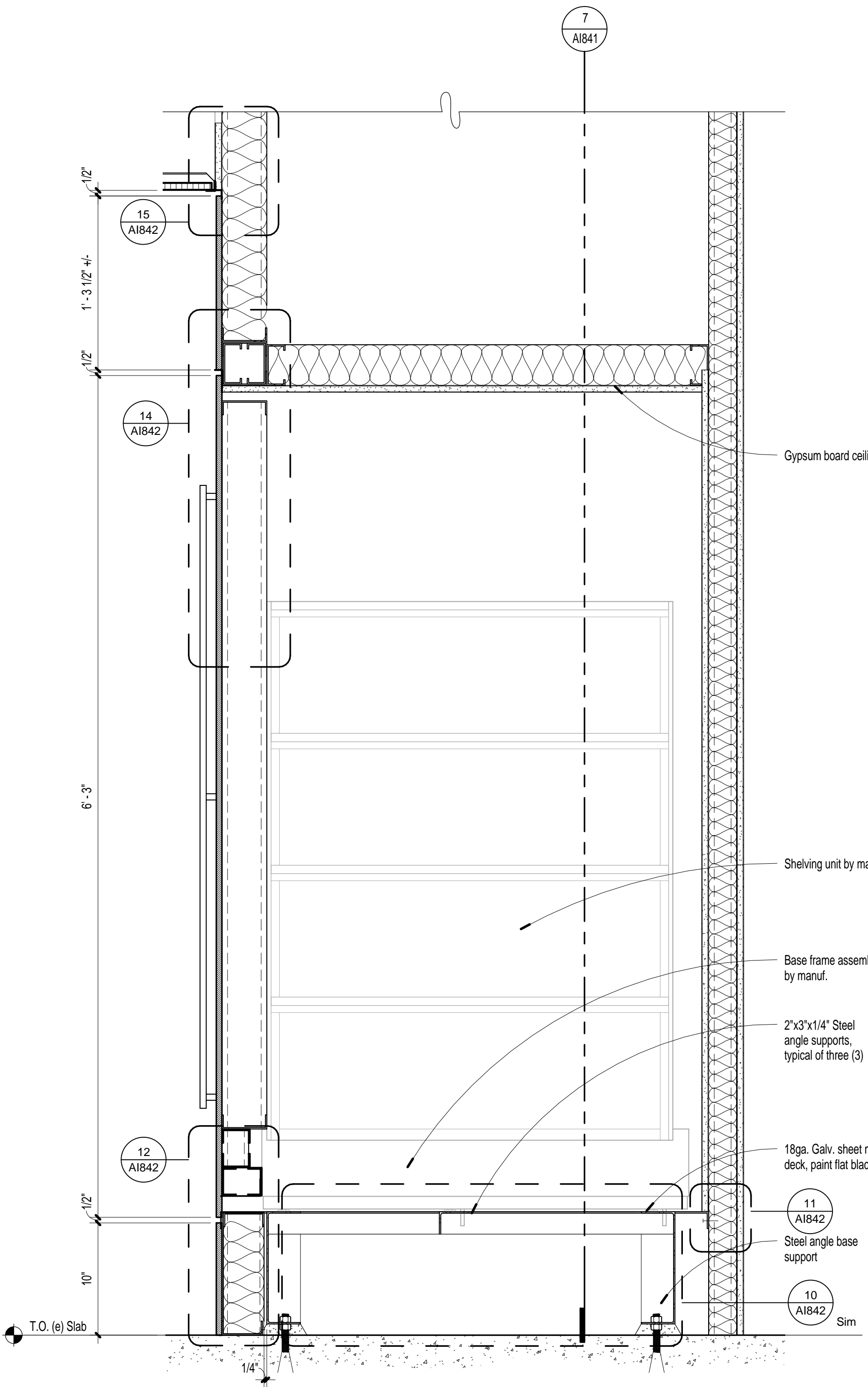


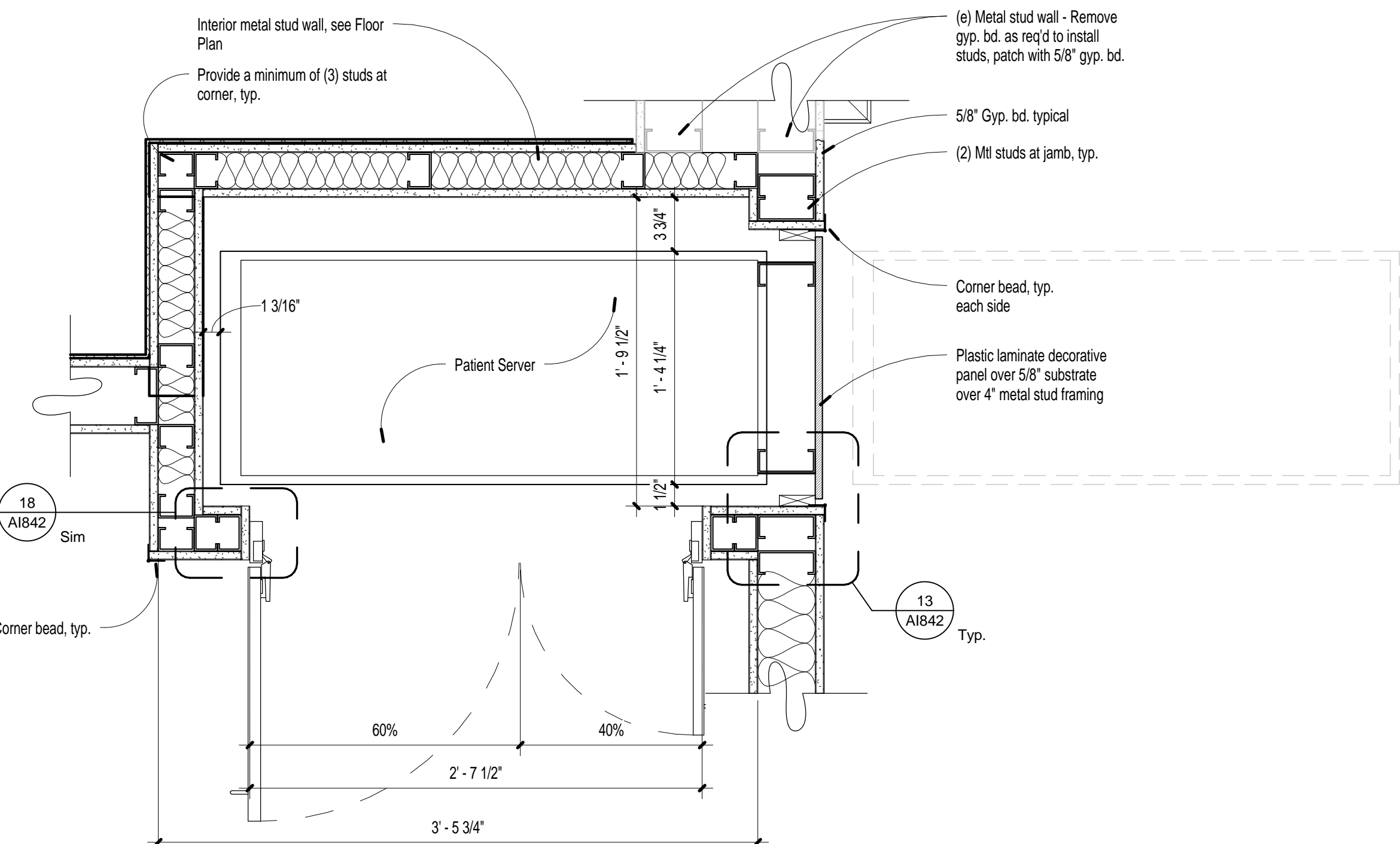
three inches = one foot.
one and one half inches = one foot.
one inch = one foot.
three quarters inch = one foot.
three eighths inch = one foot.
one half inch = one foot.
one quarter inch = one foot.
one eighth inch = one foot.



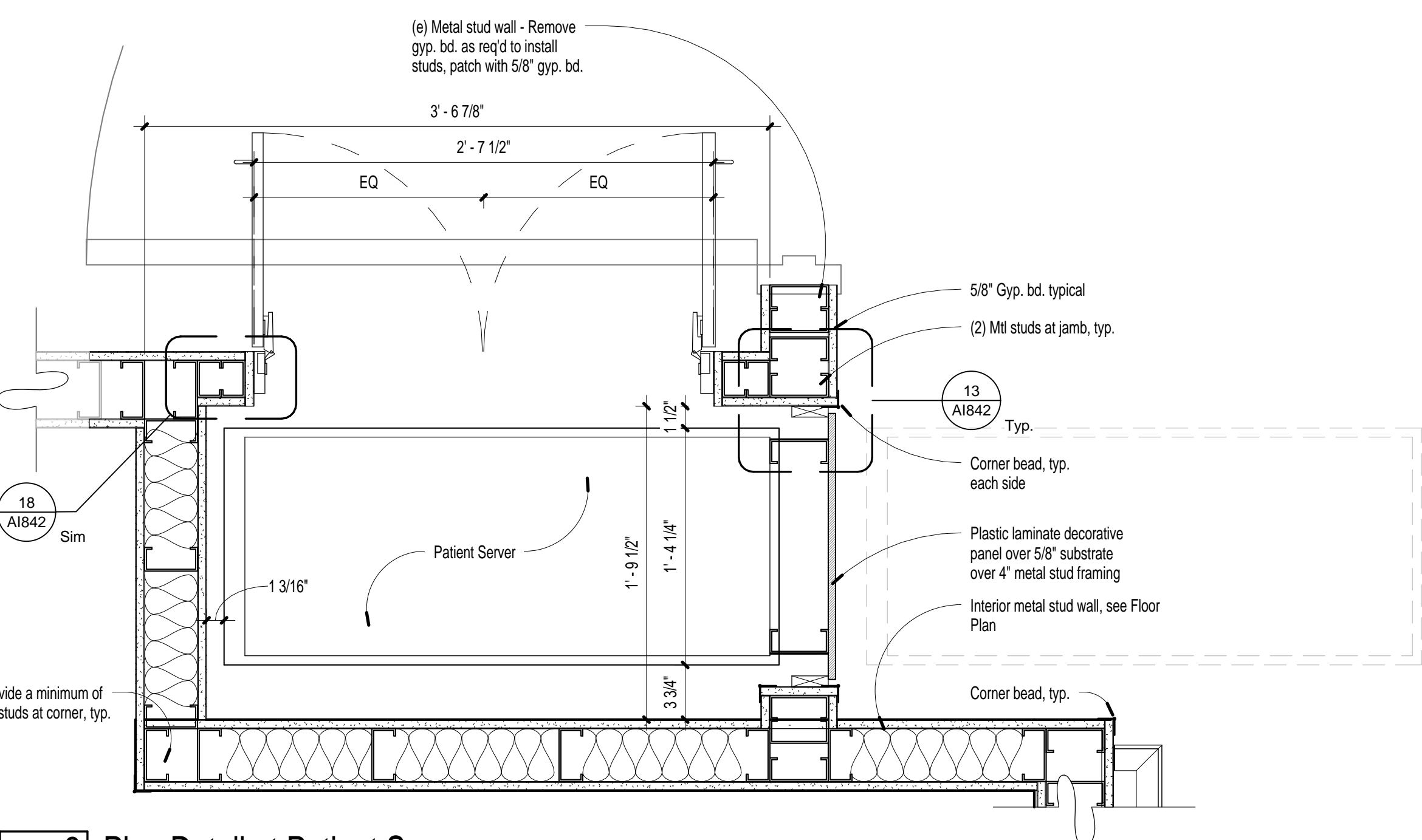
7 Patient Server Section - B
1 1/2" = 1'-0"



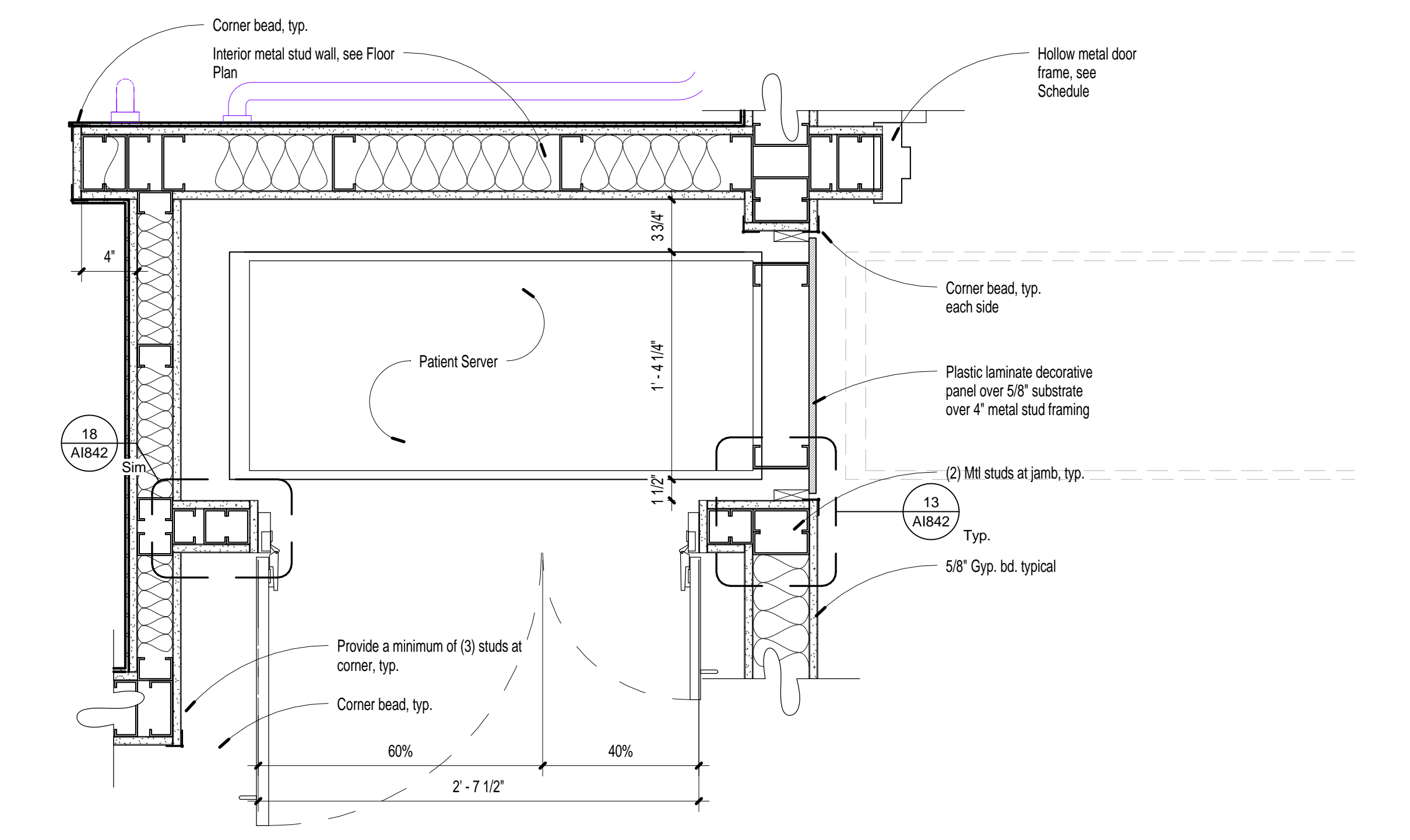
5 Patient Server Section - A
1 1/2" = 1'-0"



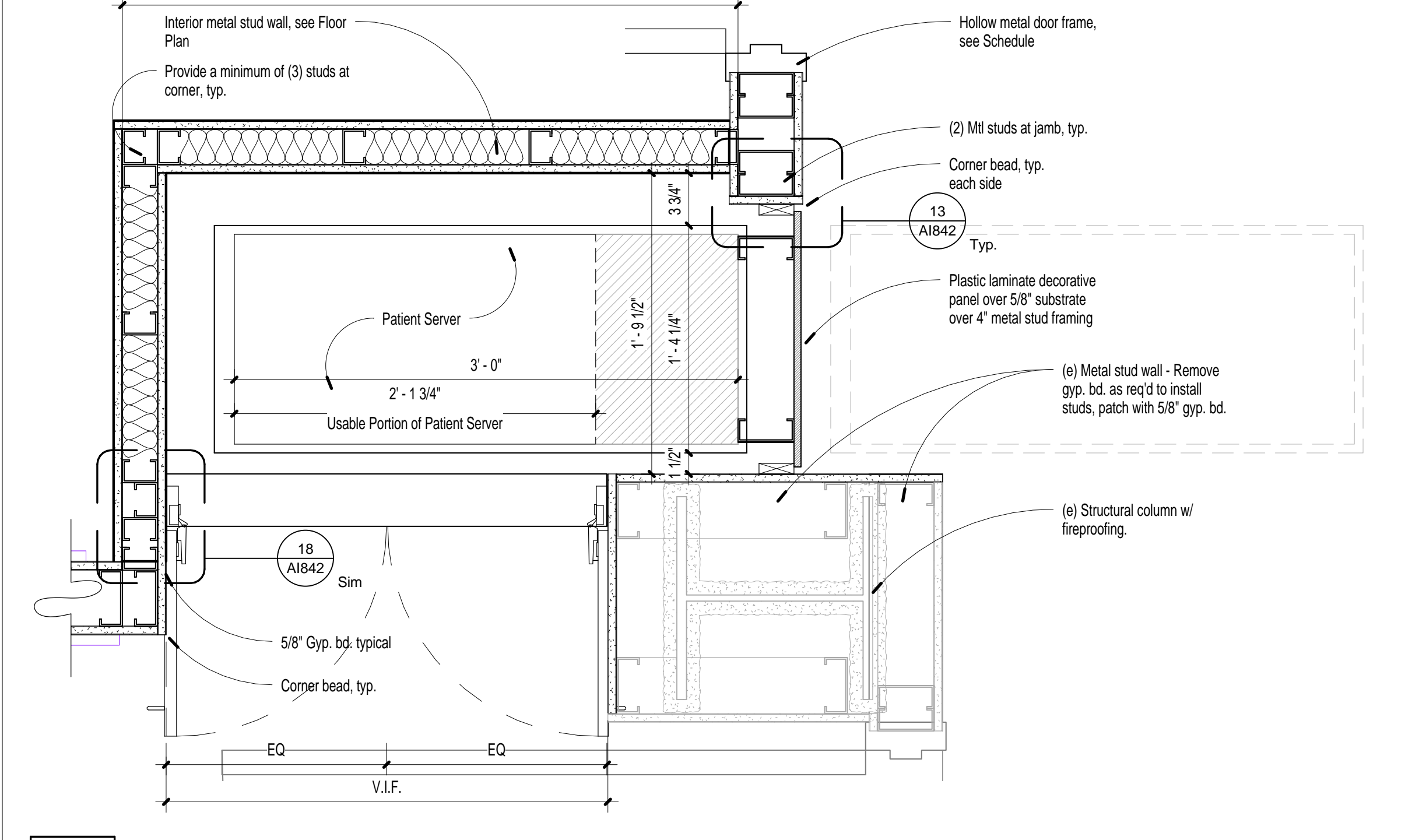
3 Plan Detail at Patient Server
1 1/2" = 1'-0"



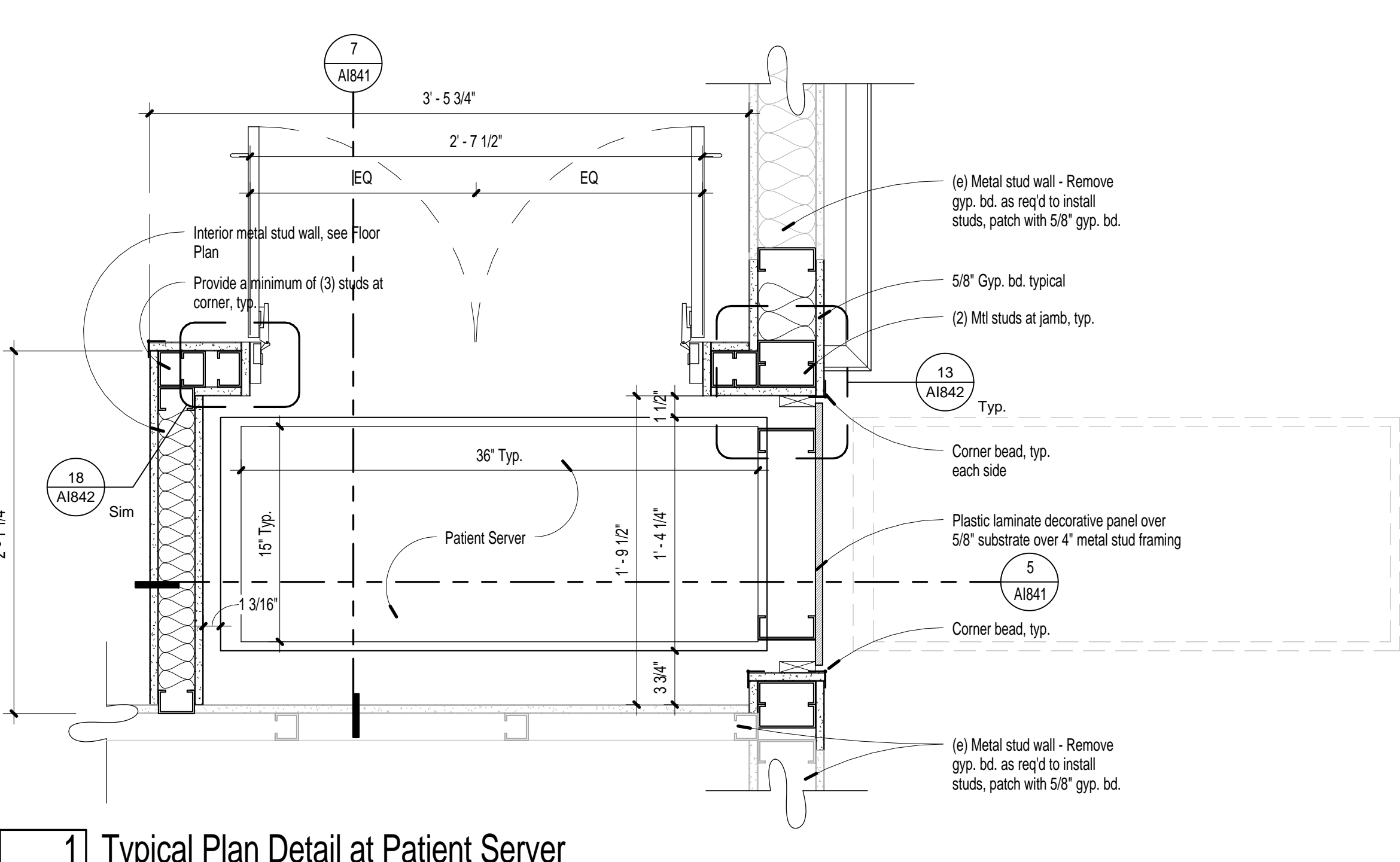
2 Plan Detail at Patient Server
1 1/2" = 1'-0"



6 Plan Detail at Patient Server Unit B5248
1 1/2" = 1'-0"



4 Plan Detail at Patient Server Unit 5246
1 1/2" = 1'-0"



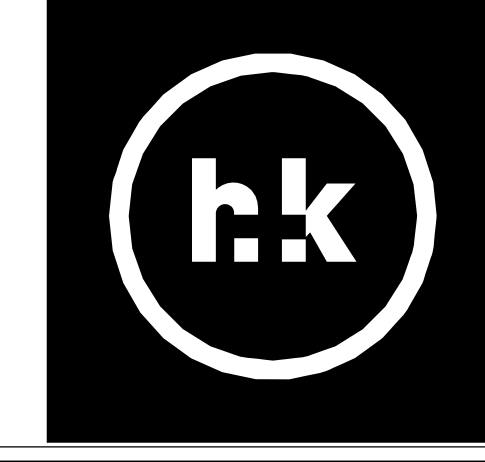
1 Typical Plan Detail at Patient Server
1 1/2" = 1'-0"

Number	Revision	Date
3	Addendum #3	12/05/13

CONSULTANTS:



ARCHITECT/ENGINEERS:
H+K ARCHITECTS
5485 Reno Corporate Drive, Suite 100
Reno, Nevada 89511-2262
P 775+332+6640
F 775+332+6642
hkarchitects.com



Drawings Title
Details
Approved: Project Director

Project Title Renovation of 4C/5th Floor to Single Patient Rooms		Project Number 654-12-724	
Location 975 Kirman Avenue, Reno NV 89520		Building Number Bldg. 12	
Date August 22, 2013	Checked MMH	Drawn EL	Drawing Number A1841

Office of
Construction
and Facilities
Management
Department of
Veterans Affairs

Bid Documents