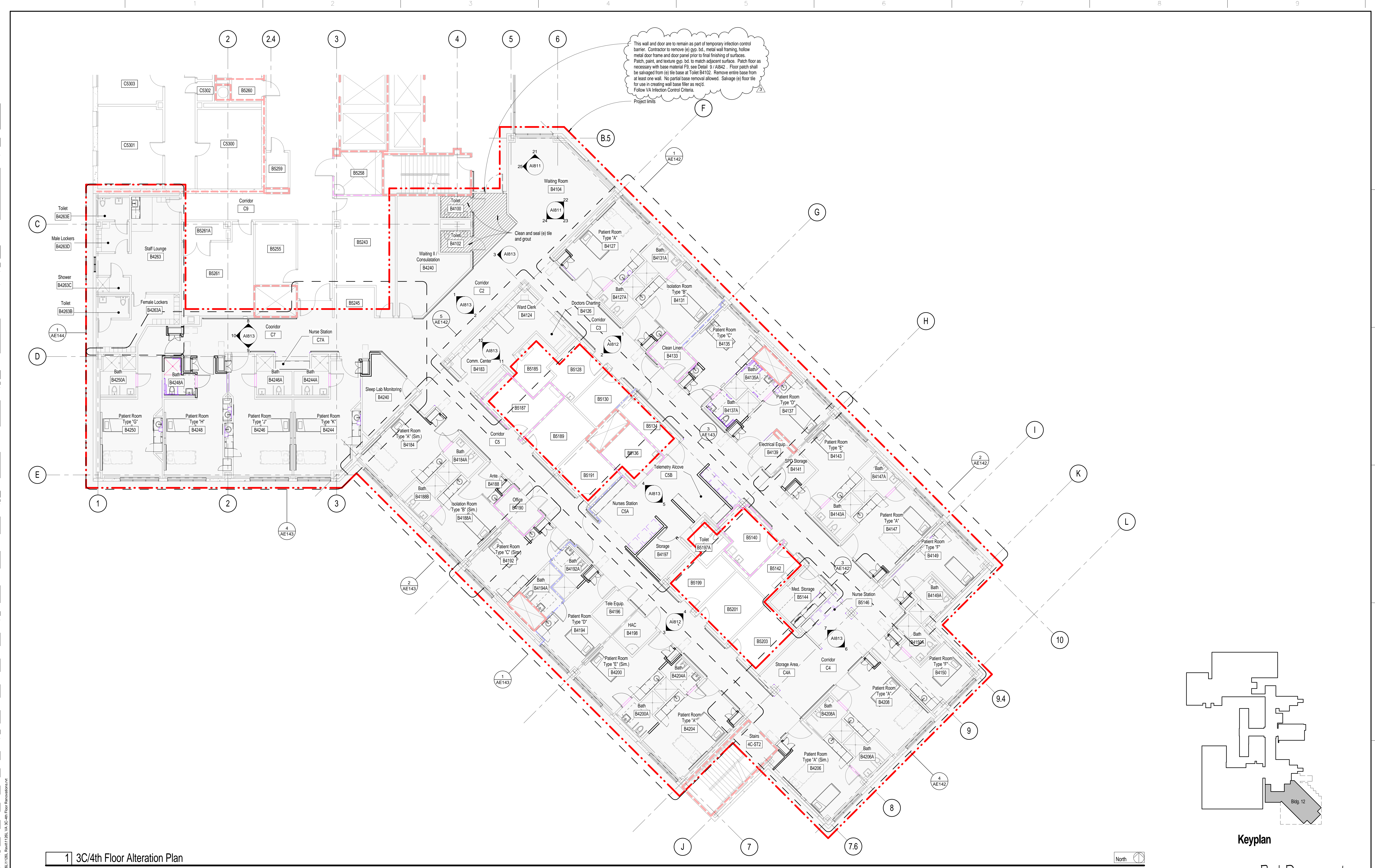
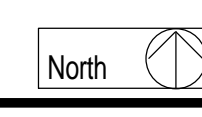


one eighth inch = one foot
one quarter inch = one foot
one half inch = one foot
three eighths inch = one foot
one inch = one foot
three quarters inch = one foot
one and one half inches = one foot
three inches = one foot



1 3C/4th Floor Alteration Plan

1/8" = 1'-0"

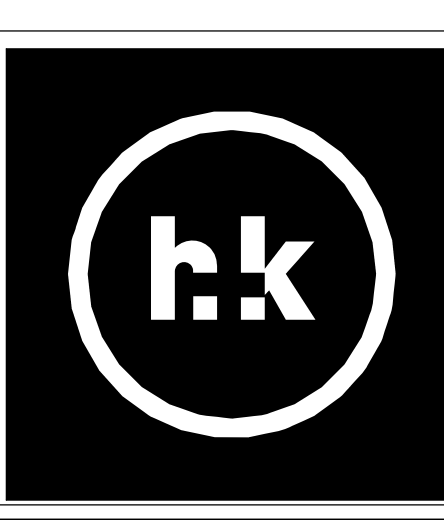


Number	Revision	Date
3	Addendum #3	12/05/13

CONSULTANTS:



ARCHITECT/ENGINEERS:
H+K ARCHITECTS
5485 Reno Corporate Drive, Suite 100
Reno, Nevada 89511-2262
P 775-332-6640
F 775-332-6642
hkarchitects.com



Drawings Title
3C/4th Floor Alteration Plan
Approved: Project Director

Project Title Renovation of 3C/4th Floor to Single Patient Rooms		Project Number 654-12-724	
Location 975 Kirman Avenue, Reno NV 89520		Building Number Bldg. 12	
Date August 22, 2013	Checked MMH	Drawn EL	Drawing Number AE141

Office of Construction and Facilities Management
Department of Veterans Affairs