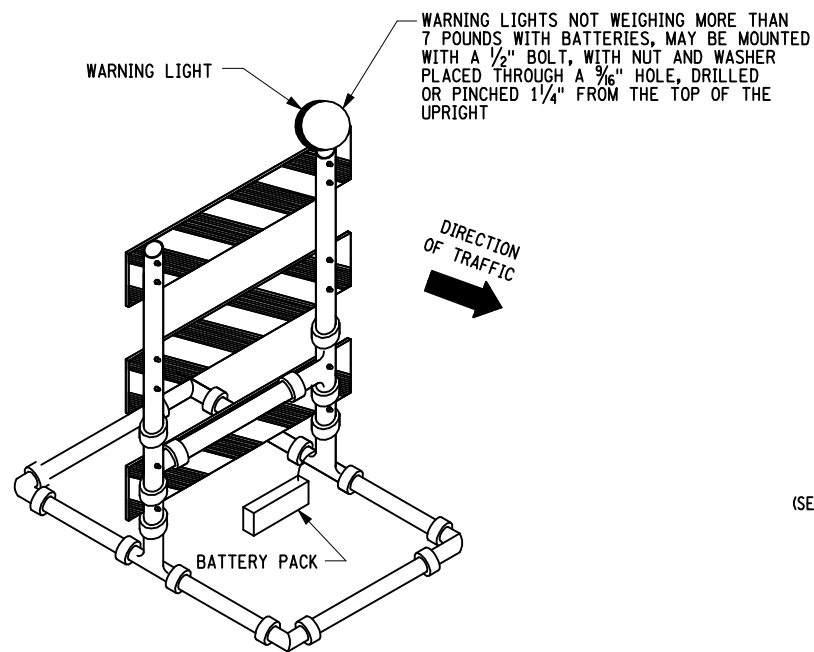
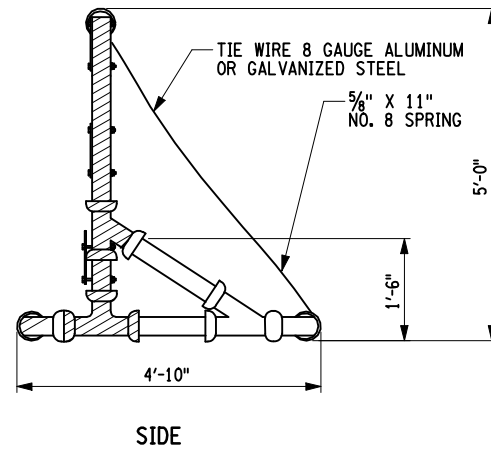


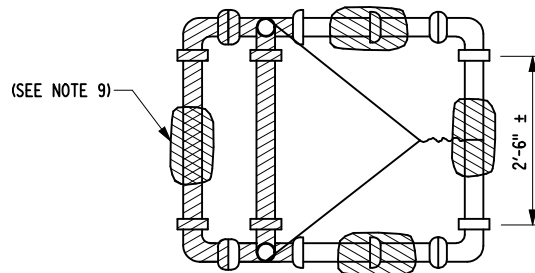
TYPE III CONSTRUCTION BARRICADE
ALTERNATE "A"



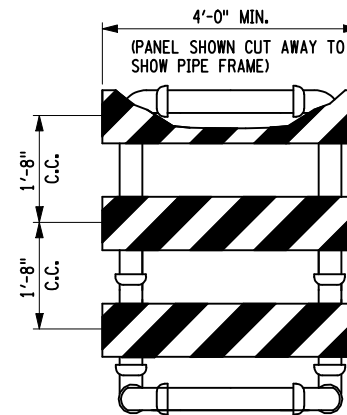
DETAILS FOR FASTENING LIGHTS ON TOP OF BARRICADE



SIDE



TYPE III CONSTRUCTION BARRICADE
ALTERNATE "B"



FRONT

NOTES:

1. THE DETAILS AND MATERIALS FOR TYPE III CONSTRUCTION BARRICADES ARE NCHRP 350 APPROVED. IF THE CONTRACTOR ELECTS TO USE AN ALTERNATE DESIGN OR MATERIALS, THE ALTERNATIVE SHALL BE NCHRP 350 APPROVED.
2. THE ALTERNATES SHOWN ON THIS SHEET ARE EQUALLY ACCEPTABLE AND THE CONTRACTOR MAY USE ANY ONE OR A MIXTURE OF TYPES.
3. PANELS SHALL HAVE 6" WIDE REFLECTORIZED ORANGE AND WHITE DIAGONAL STRIPES OF TYPE I OR TYPE III SHEETING SLOPING AT AN ANGLE OF 45°, IN ACCORDANCE WITH §729-08. THE STRIPES SHALL SLOPE DOWNWARD TOWARD THE SIDE ON WHICH TRAFFIC IS TO PASS.
4. BALLAST MAY BE PLACED ON THE BASE MEMBERS OF THE BARRICADE. BALLAST SHALL NOT EXTEND INTO THE ACCESSIBLE PASSAGE WIDTH OF 5' WHERE BARRICADES ARE USED TO CHANNELIZE PEDESTRIANS.
5. PANELS FOR BARRICADES MAY BE WOOD, PLASTIC, OR ALUMINUM. PIPE FOR BARRICADES SHALL USE SDR SIZES 21 TO 32.5.
6. WHEN THE BATTERY AND LIGHT WEIGH MORE THAN 7 LBS, THE BATTERY SHALL BE MOUNTED ON THE BOTTOM OF THE BARRICADE.
7. ALL PIPES SHALL BE WHITE. WHITE FITTINGS ARE PREFERRED, BLACK MAY BE USED. ALL JOINTS IN ALTERNATE "A" SHALL BE GLUED WITH A SOLVENT CEMENT COMPATIBLE WITH THE P.V.C. PIPE.
8. ALL JOINTS IN ALTERNATE "B" SHALL BE FREE TO SEPARATE UPON VEHICLE IMPACT. SHADED PIPES AND FITTINGS SHALL BE TIED TOGETHER WITH A MINIMUM 3/8" DIA. NYLON, OR EQUIVALENT ROPE THREADED INTO THE PIPE AND FITTING INTERIOR.
9. IF BARRICADES ARE USED TO TEMPORARILY CHANNELIZE PEDESTRIANS, THERE SHALL BE A CONTINUOUS DETECTABLE BOTTOM AND TOP RAILS WITH NO GAP BETWEEN INDIVIDUAL BARRICADES TO BE DETECTABLE TO BLIND OR VISUALLY IMPAIRED USERS OF LONG CANES. THE BOTTOM OF THE BOTTOM RAIL SHALL BE NO HIGHER THAN 6" ABOVE THE GROUND AND THE TOP OF THE TOP RAIL SHALL BE NO LOWER THAN 3' ABOVE THE GROUND.



STATE OF NEW YORK
DEPARTMENT OF TRANSPORTATION

U.S. CUSTOMARY STANDARD SHEET

TYPE III CONSTRUCTION BARRICADES
(SHEET 1 OF 2)

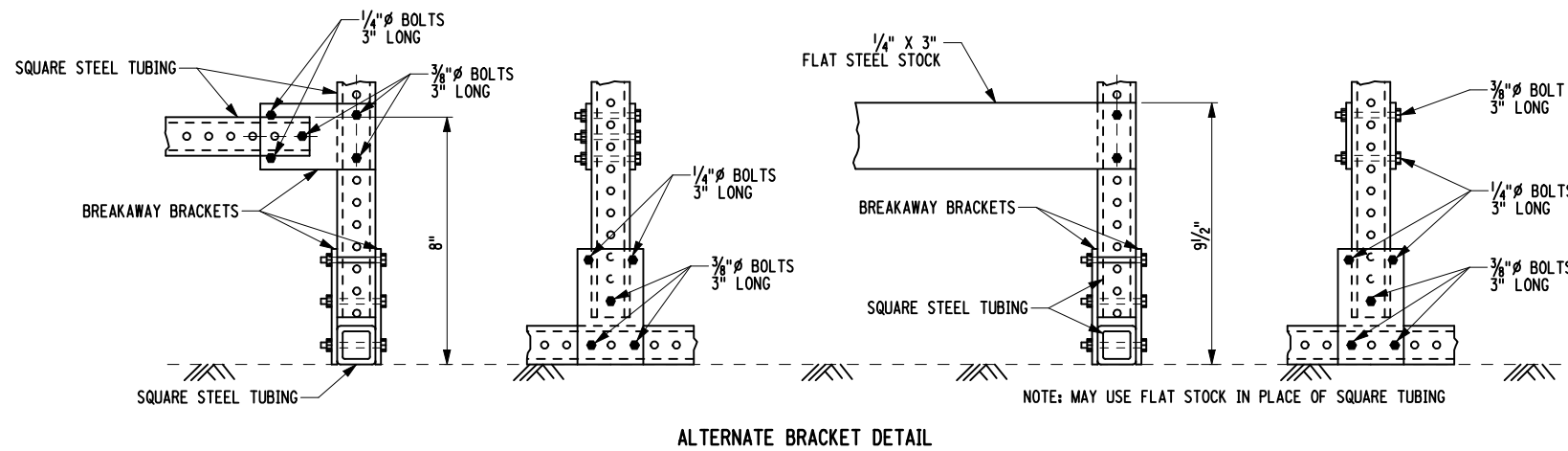
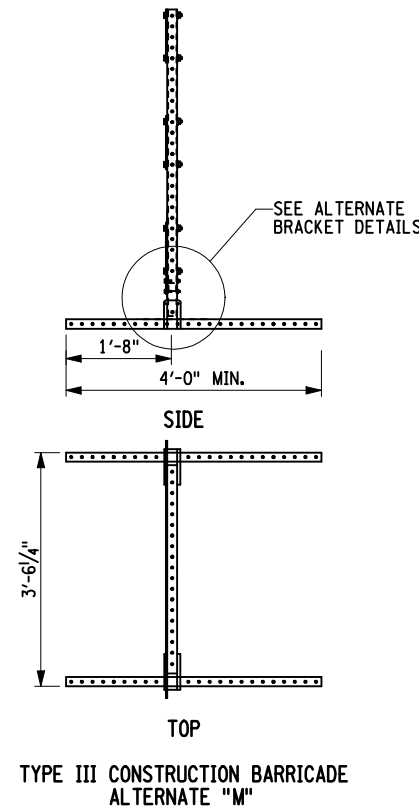
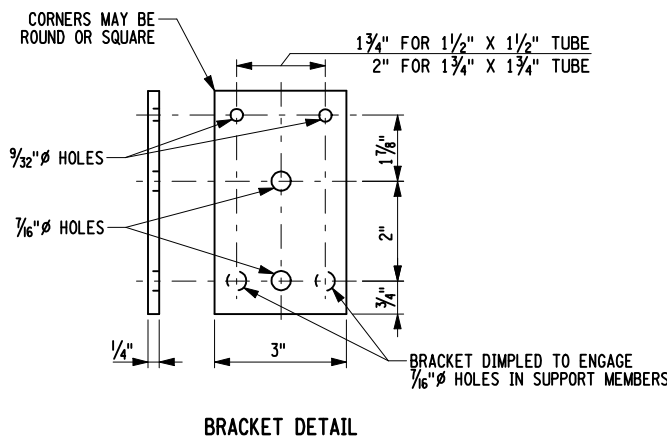
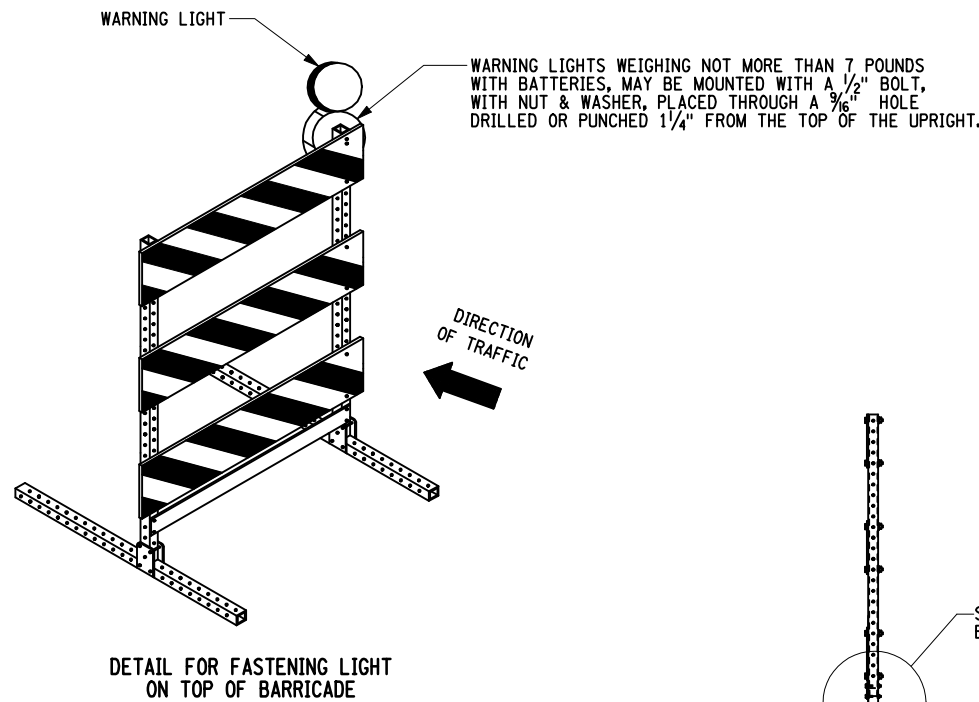
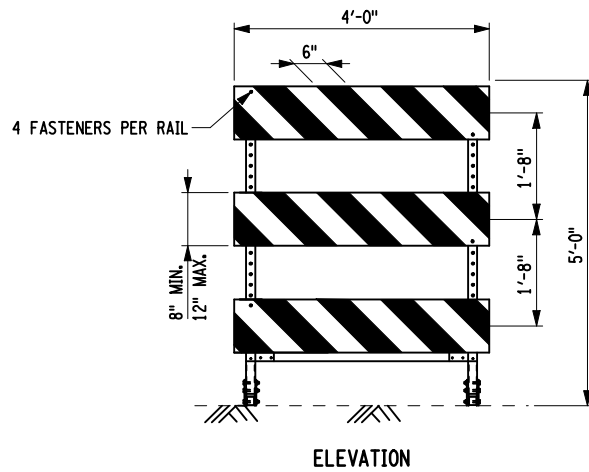
APPROVED OCTOBER 06, 2008

ISSUED UNDER EB 08-036

/S/ J. F. TYNAN, P.E.
DEPUTY CHIEF ENGINEER
(CONSTRUCTION)

619-02

EFFECTIVE DATE: 01/08/09



NOTE: SQUARE STEEL TUBING SHALL MEET ONE OF THE FOLLOWING MATERIAL REQUIREMENTS:

12 GAUGE 1 3/4" X 1 3/4", ASTM A653
12 GAUGE 1 1/2" X 1 1/2", ASTM A653
14 GAUGE 1 3/4" X 1 3/4", ASTM A1011
ALL BOLTS ARE A325 OR EQUIVALENT BOLTS

NOTES:

- THE DETAILS AND MATERIALS FOR TYPE III CONSTRUCTION BARRICADES ARE NCHRP 350 APPROVED. IF THE CONTRACTOR ELECTS TO USE AN ALTERNATE DESIGN OR MATERIALS, THE ALTERNATIVE SHALL BE NCHRP 350 APPROVED.
- THE ALTERNATES SHOWN ON THIS SHEET ARE EQUALLY ACCEPTABLE AND THE CONTRACTOR MAY USE ANY ONE OR A MIXTURE OF TYPES.
- PANELS SHALL HAVE 6" WIDE REFLECTORIZED ORANGE AND WHITE DIAGONAL STRIPES OF TYPE I OR TYPE III SHEETING SLOPING AT AN ANGLE OF 45°, IN ACCORDANCE WITH §729-08. THE STRIPES SHALL SLOPE DOWNWARD TOWARD THE SIDE ON WHICH TRAFFIC IS TO PASS.
- BALLAST MAY BE PLACED ON THE BASE MEMBERS OF THE BARRICADE. BALLAST SHALL NOT EXTEND INTO THE ACCESSIBLE PASSAGE WIDTH OF 5' WHERE BARRICADES ARE USED TO CHANNELIZE PEDESTRIANS.
- PANELS FOR BARRICADES MAY BE WOOD, PLASTIC, OR ALUMINUM.
- WHEN THE BATTERY AND LIGHT WEIGH MORE THAN 7 LBS, THE BATTERY SHALL BE MOUNTED AT THE BOTTOM OF THE BARRICADE.
- ALTERNATE "M" BARRICADES SHALL BE EXTENDED WITH INTERNAL SPLICE MEMBERS. THE INTERNAL SPLICE MEMBERS SHALL BE ONE 1 FOOT LENGTHS OF SQUARE STEEL TUBING INSERTED 6" INTO EACH UPRIGHT. THE EXTENSION SHALL THEN BE PLACED OVER THE TOP OF THE INTERNAL SPLICE MEMBER. THE EXTENSION AND INTERNAL SPLICE MEMBER SHALL BE HELD IN PLACE WITH 3/8" BOLTS WITH NUTS AND WASHERS PLACED 4" (±1") ABOVE AND BELOW THE JOINT FORMED BY THE EXTENSION. THE INTERNAL SPLICE MEMBERS SHALL BE ONE OF THE FOLLOWING SIZES DEPENDING UPON THE TUBING USED TO FABRICATE THE BARRICADE. GAUGES FOR SQUARE TUBES SHALL BE UNITED STATES STANDARD GAUGE.
- IF BARRICADES ARE USE TO TEMPORALLY CHANNELIZE PEDESTRIANS, THERE SHALL BE CONTINUOUS DETECTABLE BOTTOM AND TOP RAILS WITH NO GAP BETWEEN INDIVIDUAL BARRICADES, TO BE DETECTABLE TO BLIND OR VISUALLY IMPAIRED USERS OF LONG CANES. THE BOTTOM OF THE BOTTOM RAIL SHALL BE NO LOWER THAN 6" ABOVE THE GROUND SURFACE. THE TOP OF THE TOP RAIL SHALL BE NO LOWER THAN 3' ABOVE THE GROUND SURFACE.

BARRICADE MEMBERS	INTERNAL SPLICE MEMBERS
12 GAUGE 1 3/4" X 1 3/4"	12 GAUGE 1 1/2" X 1 1/2"
14 GAUGE 1 3/4" X 1 3/4"	14 GAUGE 1 1/2" X 1 1/2"
12 GAUGE 1 1/2" X 1 1/2"	12 GAUGE 1 1/4" X 1 1/4"



STATE OF NEW YORK
DEPARTMENT OF TRANSPORTATION

U.S. CUSTOMARY STANDARD SHEET

TYPE III CONSTRUCTION BARRICADES
(SHEET 2 OF 2)

APPROVED OCTOBER 06, 2008

ISSUED UNDER EB 08-036

/S/ J. F. TYNAN, P.E.
DEPUTY CHIEF ENGINEER
(CONSTRUCTION)

619-02

EFFECTIVE DATE: 01/08/09