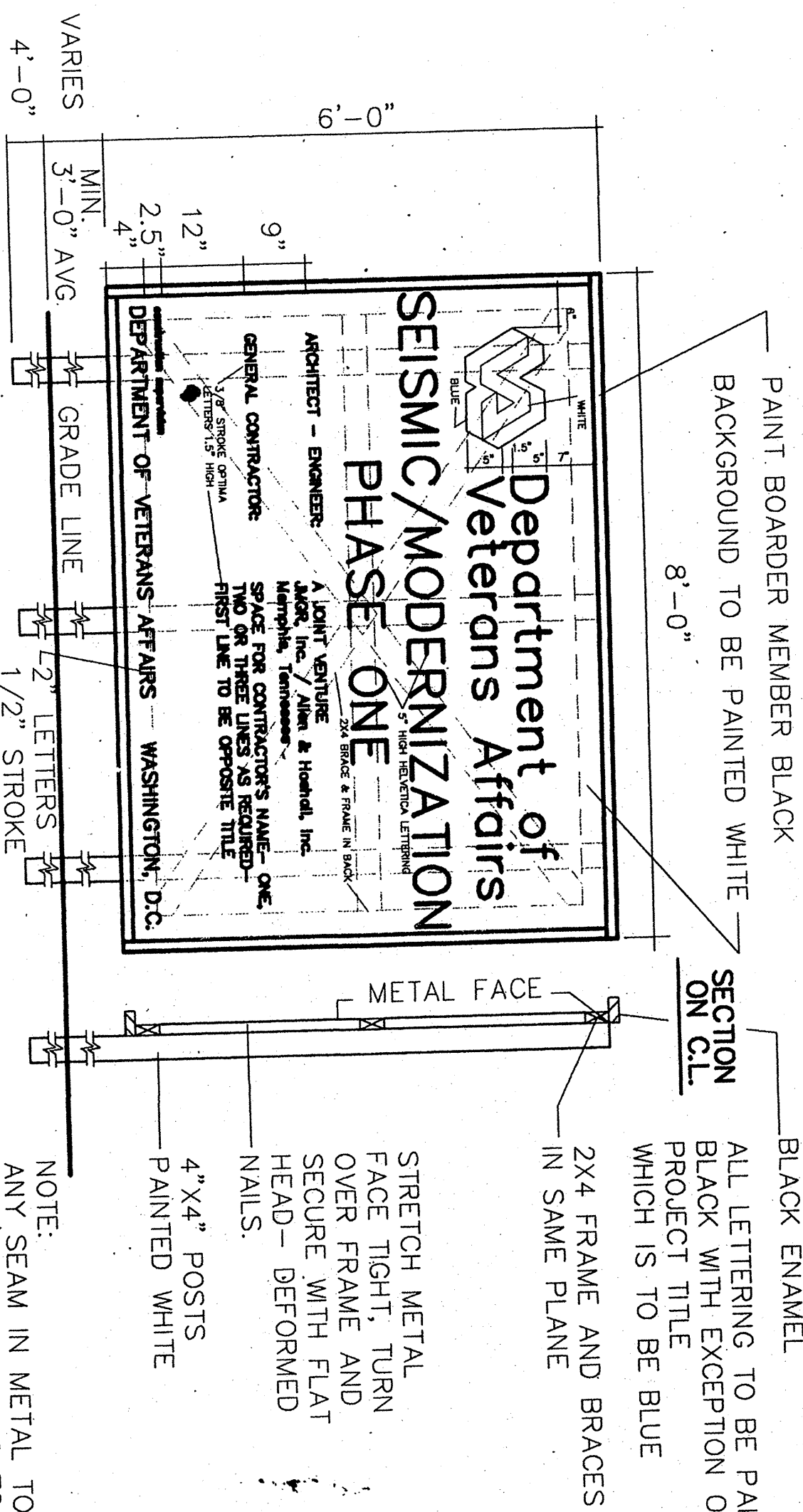
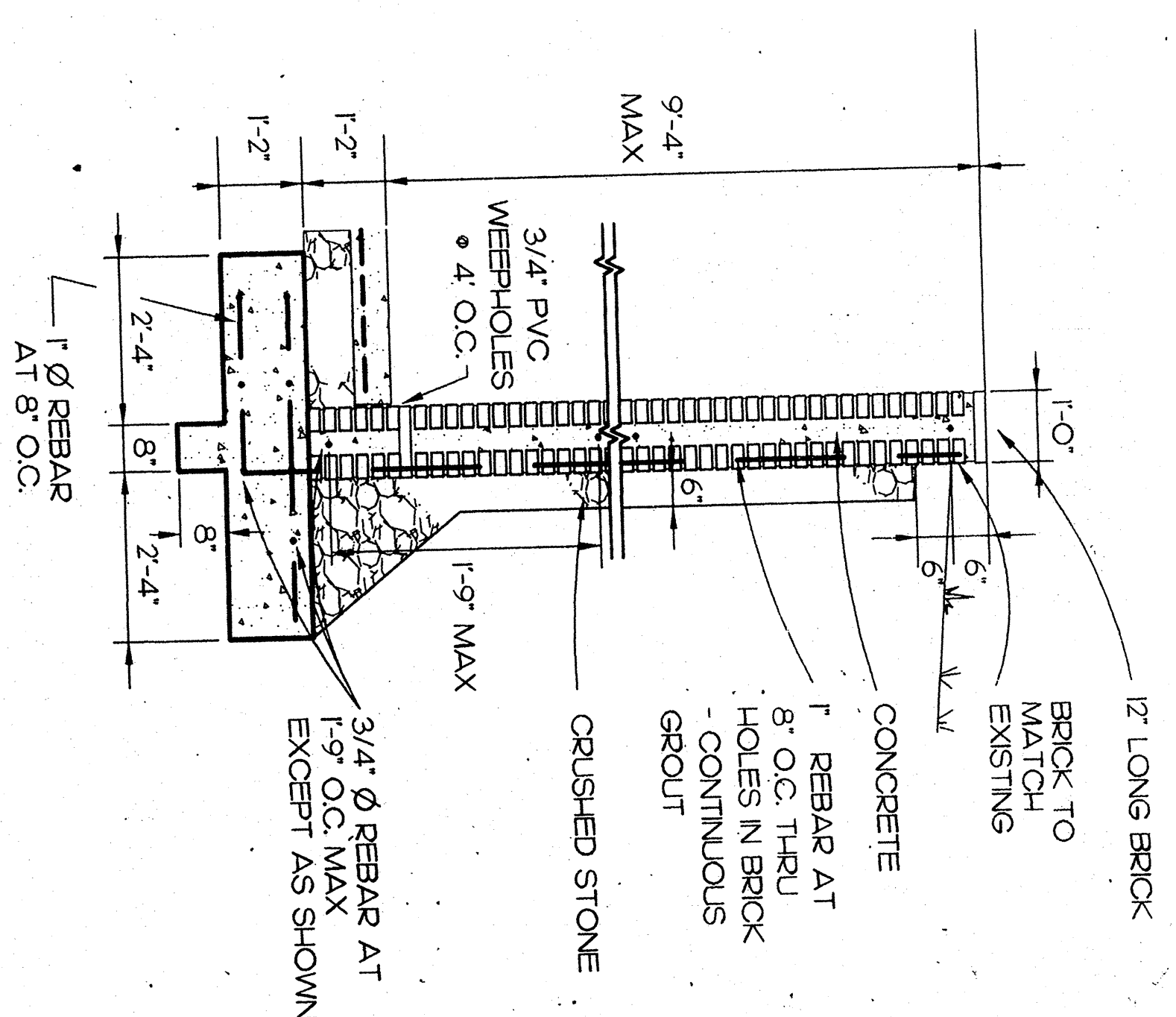
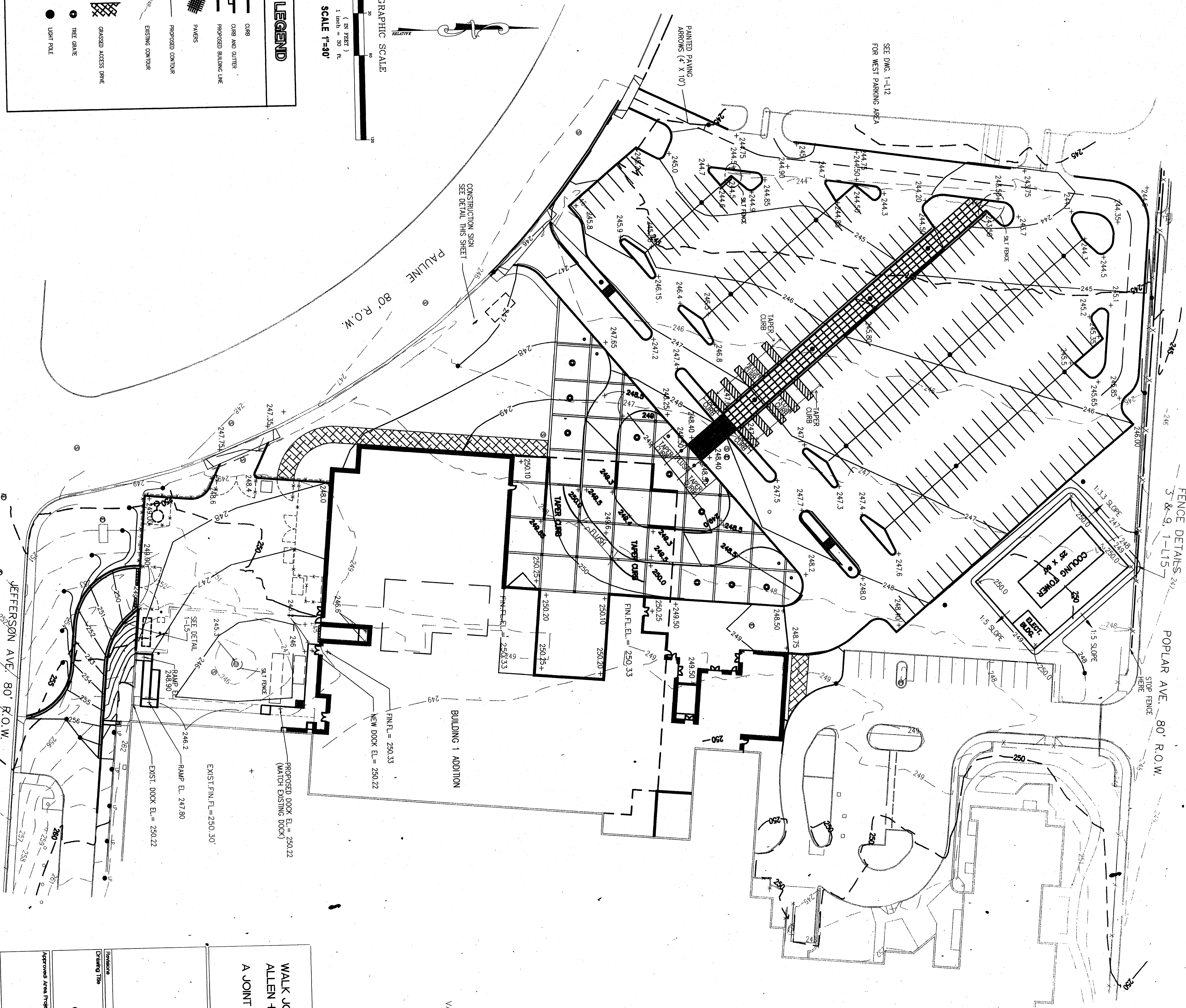
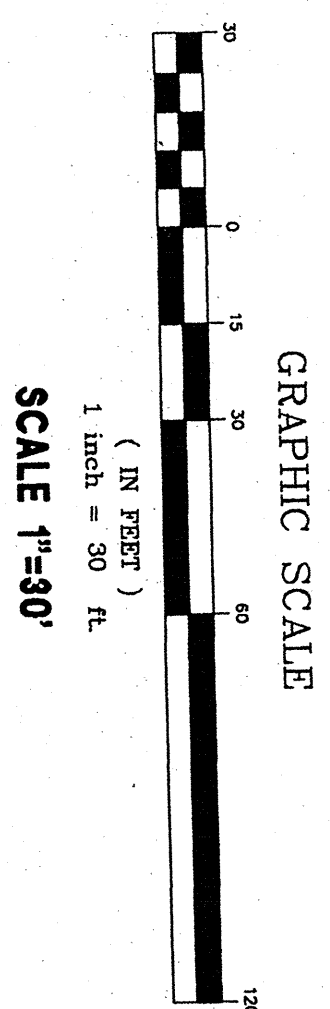
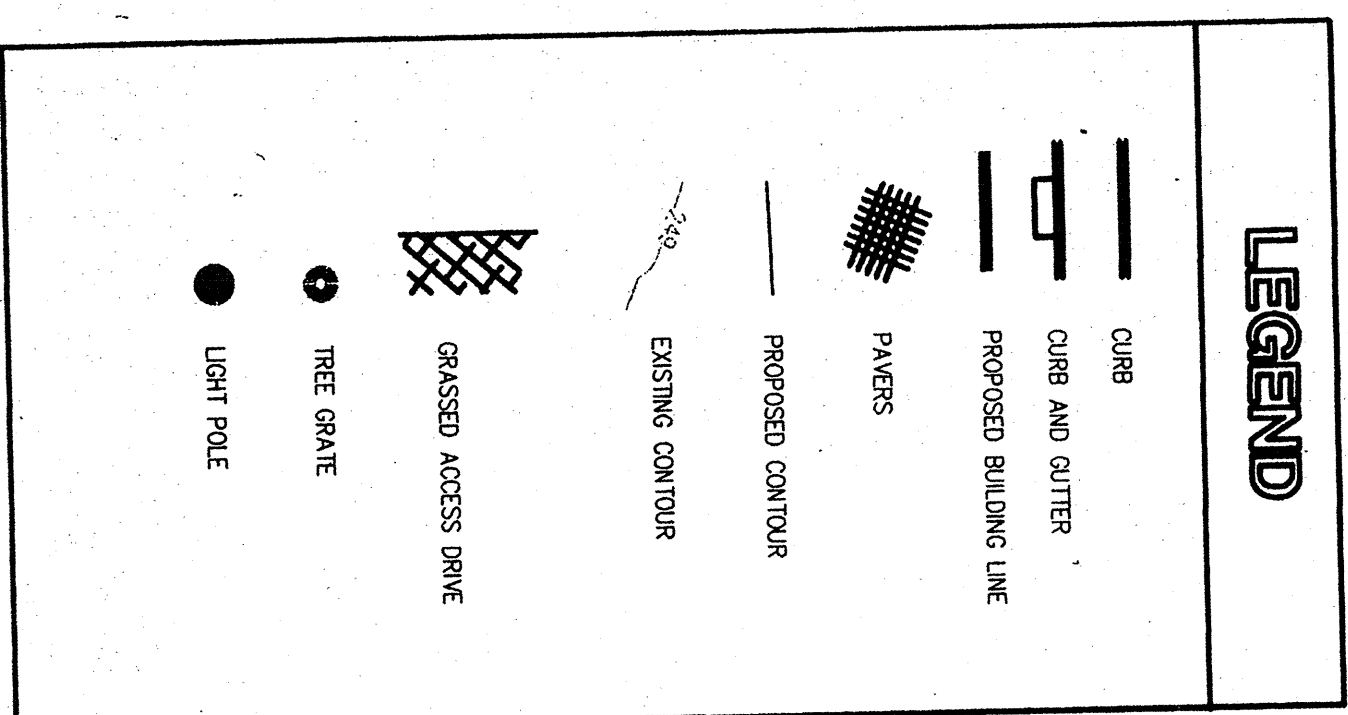


ONE-EIGHTH INCH = ONE FOOT ONE-QUARTER INCH = ONE FOOT THREE-EIGHTHS INCH = ONE FOOT ONE-HALF INCH = ONE FOOT THREE-QUARTERS INCH = ONE FOOT ONE INCH = ONE FOOT ONE AND ONE-HALF INCHES = ONE FOOT THREE INCHES = ONE FOOT



## CONSTRUCTION SIGN DETAIL

WALK JONES + FRANCIS MAH, Inc. /  
ALLEN + HOSHALL, Inc.  
A JOINT VENTURE



**JACKSON PERSON & ASSOCIATES, INC.**  
66 MONROE AVENUE, SUITE #104  
MEMPHIS, TENNESSEE  
(901) 526-8386  
LANDSCAPE ARCHITECTURE, PLANNING, LAND SURVEYING, AND ENGINEERING  
JOB NO.: 920645



Discipline	Date	Project Title	Date
GRADING PLAN	6/23/95	SEISMIC/MODERNIZATION CONSTRUCTION DOCUMENTS	6/23/95
Approved Area Project Manager	Building Number	Project No.	Drawing No.
Location	ONE	614-011	1-L5
VAMC, MEMPHIS, TN			
Office of Facilities			