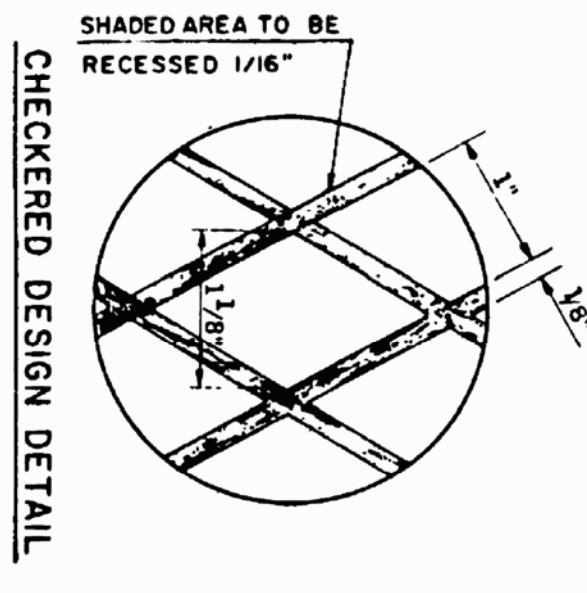
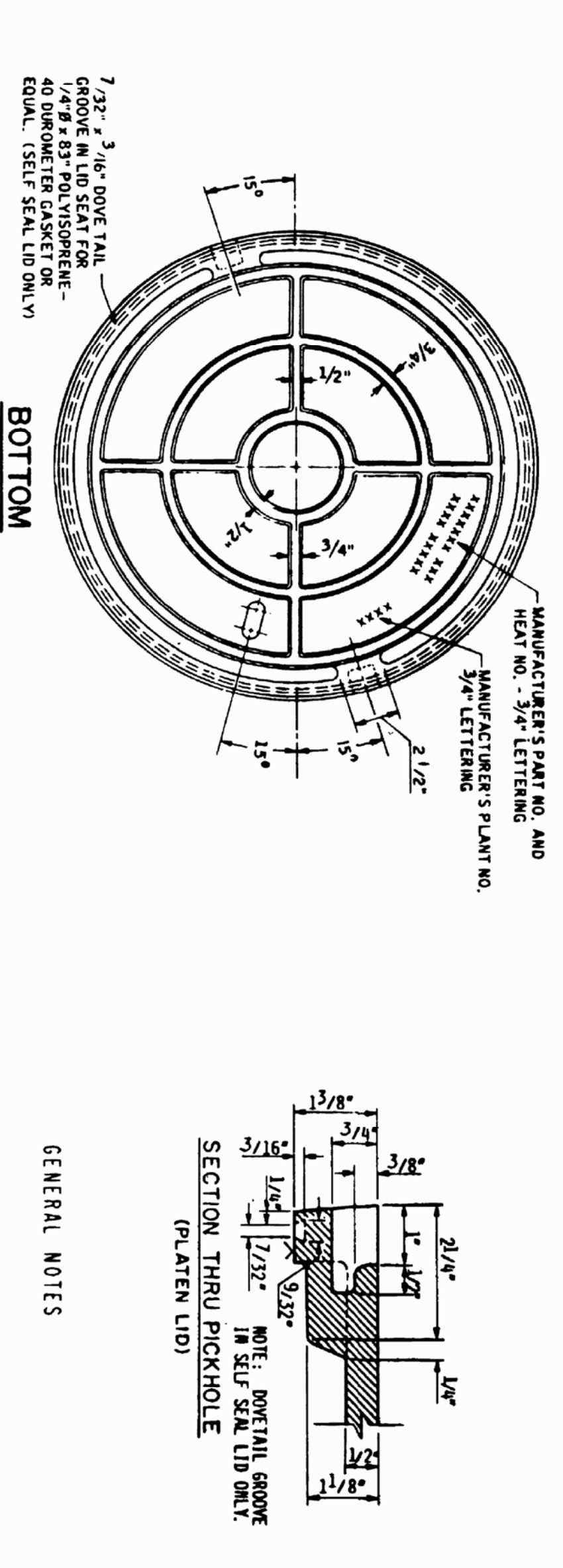
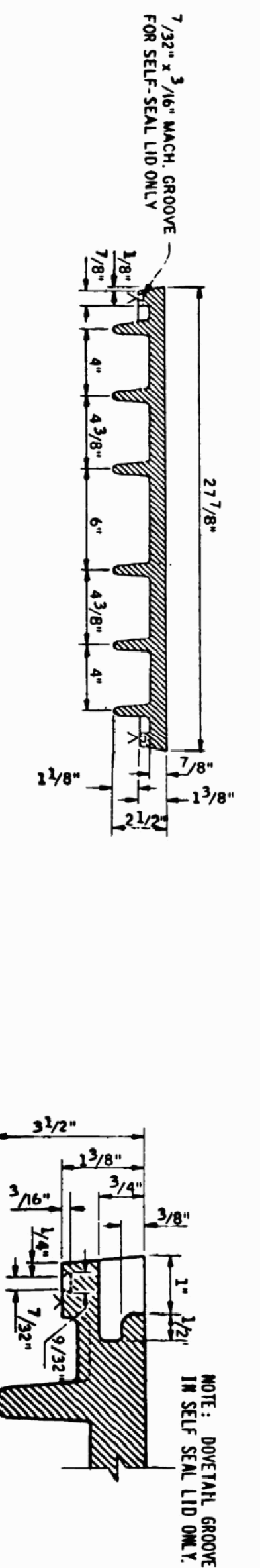
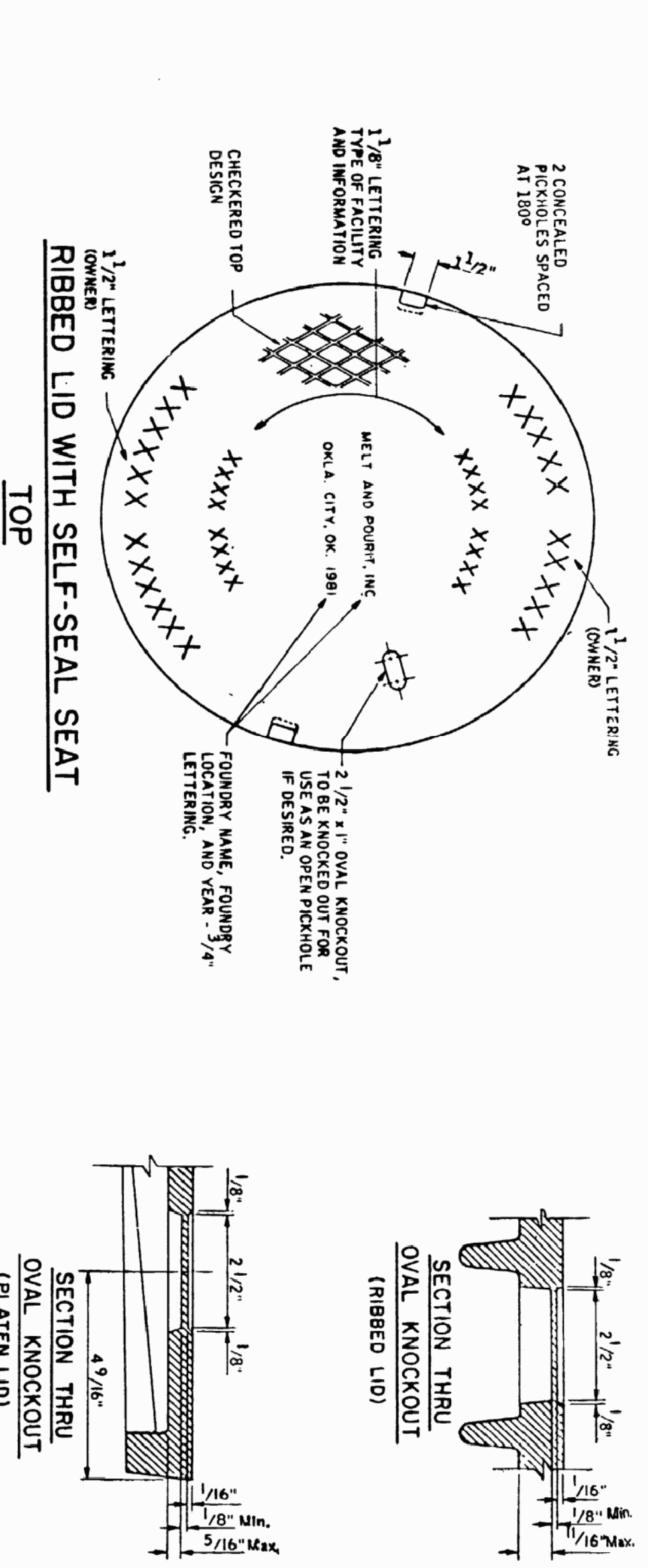


NOTES:

1. JUNCTION BOX SHALL BE REINFORCED PRECAST CONCRETE PER ASTM C-857.
2. CONCRETE COMPRESSIVE STRENGTH SHALL BE 5,000 PSI @ 28 DAYS.
3. REINFORCING SHALL BE PER ASTM A-615 GRADE 60.

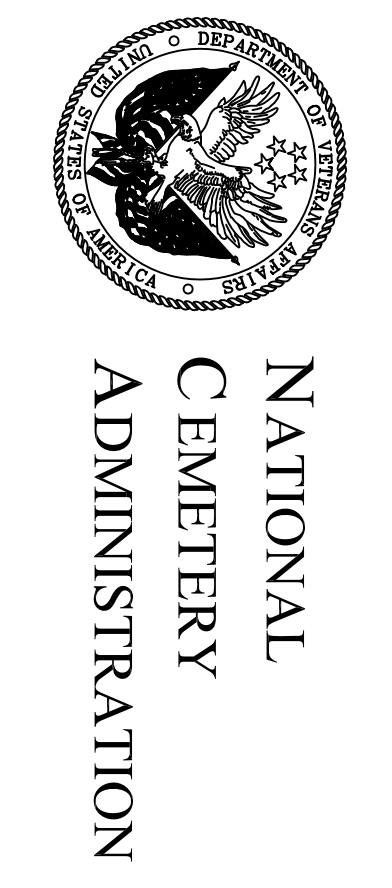
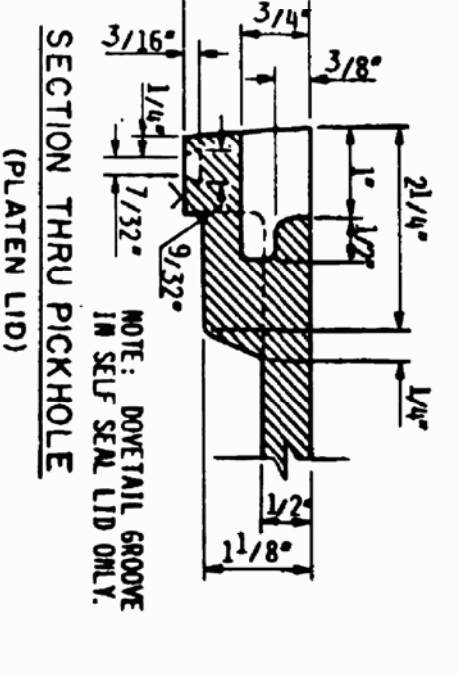


MANHOLE COVER NOMENCLATURE

RI-1	RI-10	RI-11	RI-12
RI-13	RI-14	RI-15	RI-16
RI-17	RI-18	RI-19	RI-20
RI-21	RI-22	RI-23	RI-24
RI-25	RI-26	RI-27	RI-28
RI-29	RI-30	RI-31	RI-32
RI-33	RI-34	RI-35	RI-36
RI-37	RI-38	RI-39	RI-40

1. WEIGHTS ARE APPROXIMATE AND AVERAGE. DEVIATIONS FROM THE FOLLOWING SHALL NOT EXCEED 3% PLUS OR MINUS 8% PER 240 LB.
2. COVER RIBBED-208 LID - COVER 19 LBS. (208 LBS. PER 240 LB.)
3. SEAT, A SELF-SEAL SEAT, OR A LOCKING DEVICE.
4. THE DISTANCE FROM THE CENTER OF THE COVER TO THE CENTER OF THE SEAT SHALL BE AT LEAST 10 INCHES.
5. THE DISTANCE FROM THE CENTER OF THE COVER TO THE CENTER OF THE SEAT SHALL BE AT LEAST 10 INCHES.
6. THE DISTANCE FROM THE CENTER OF THE COVER TO THE CENTER OF THE SEAT SHALL BE AT LEAST 10 INCHES.

GENERAL NOTES



Drawing Title		Project Title		Date	
REPAIR STORM DRAIN CULVERT		JUNCTION BOX		10/24/2013	
Approved: Division Chief		Building Number		Project No.	
Approved: Service Director		Checked		844-14-101	
Location		Drawn		Drawing No.	
FORT GIBSON NATIONAL CEMETERY		CFC		L-201	
				Dwg. 6 OF 7	