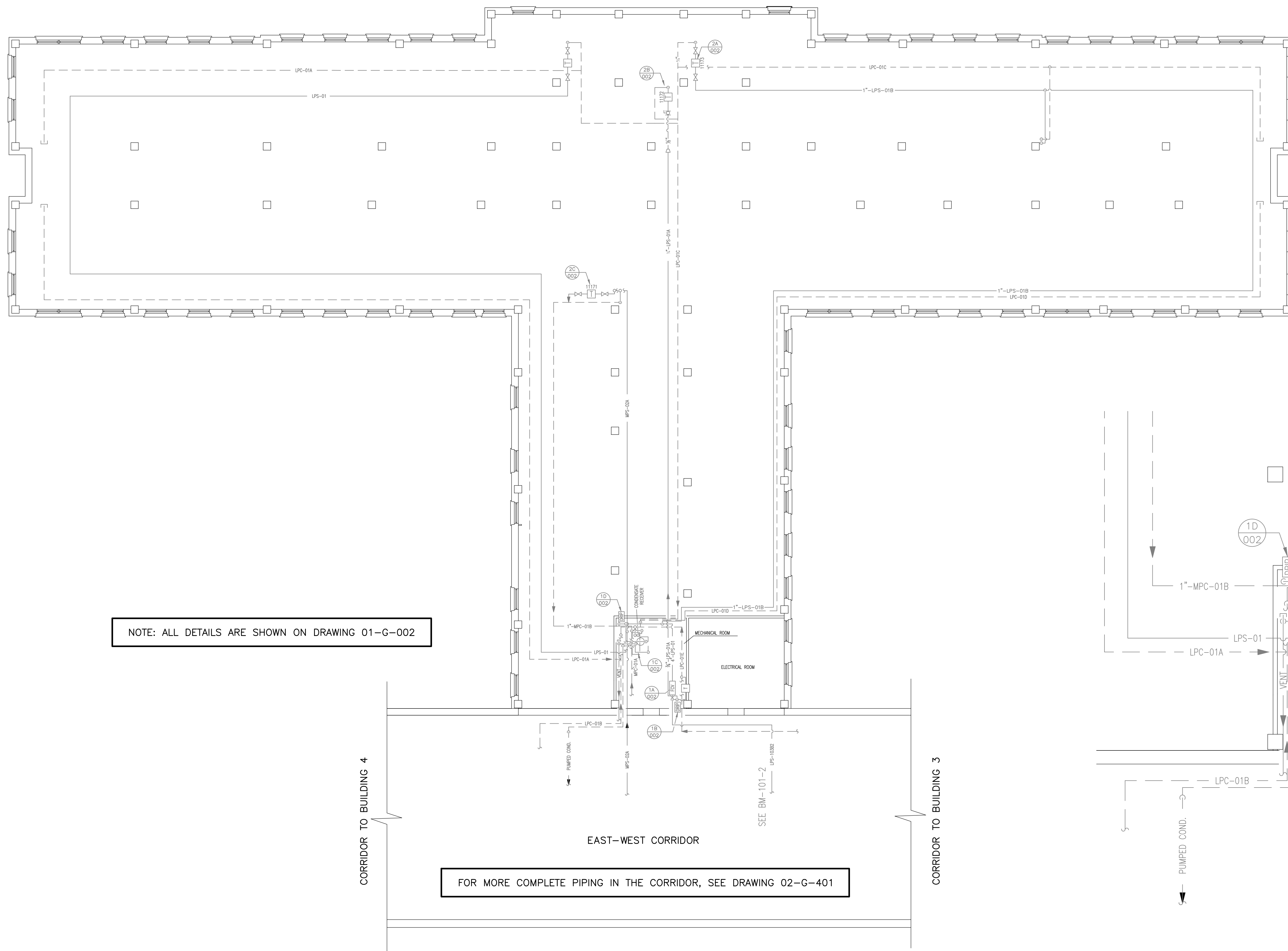


three inches = one foot  
one and one-half inches = one foot  
one inch = one foot  
three-quarters inch = one foot  
one-half inch = one foot  
three-eighths inch = one foot  
one-quarter inch = one foot  
one-eighth inch = one foot

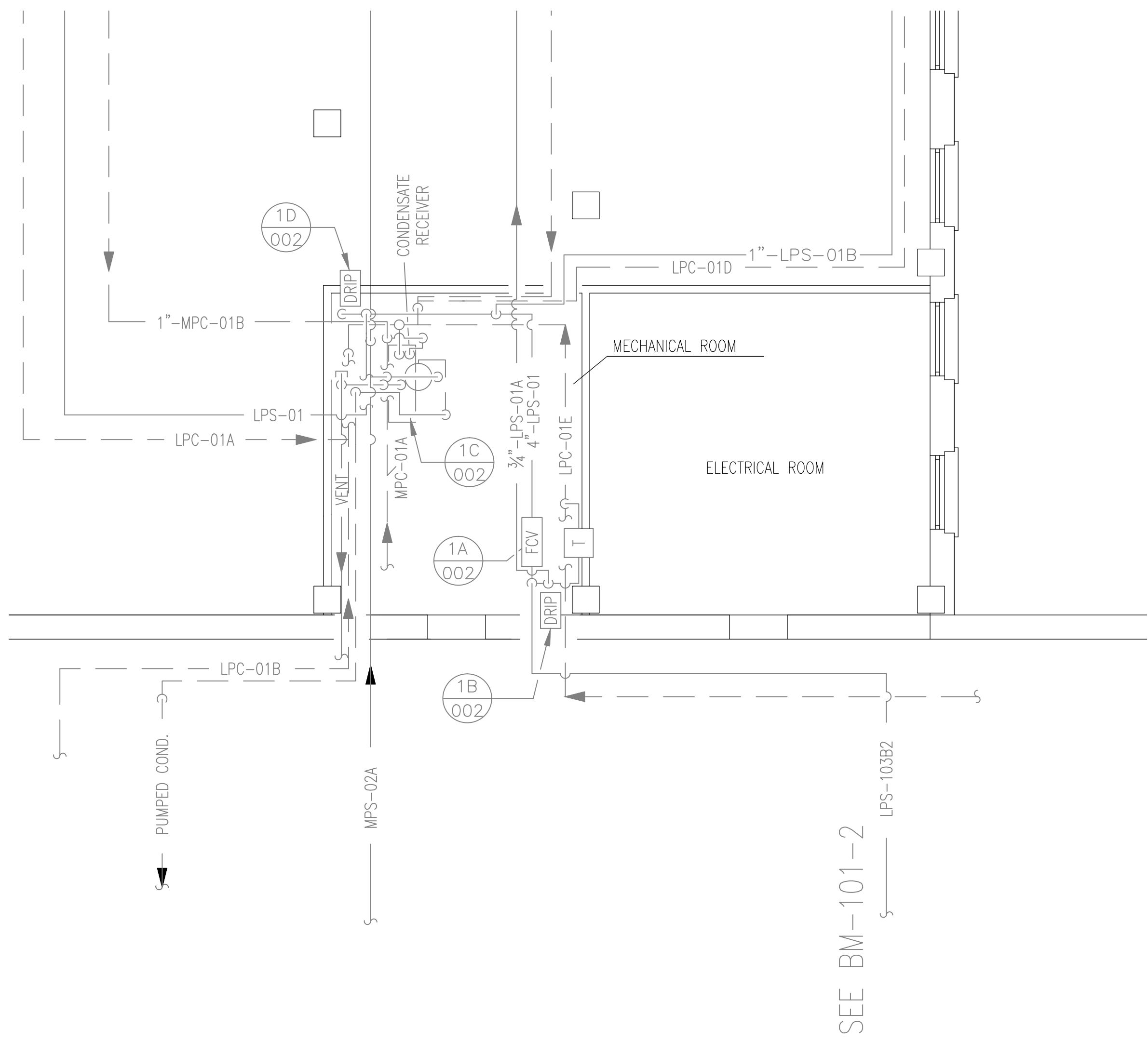
DRAWING NOTES:  
A. NO WORK REQUIRED THIS AREA. SHEET INCLUDED FOR COMPLETENESS OF RECORD DRAWINGS.




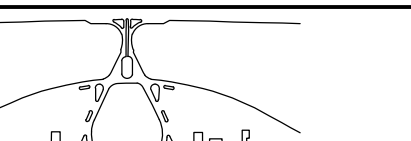

NOTE: ALL DETAILS ARE SHOWN ON DRAWING 01-G-002

FOR MORE COMPLETE PIPING IN THE CORRIDOR, SEE DRAWING 02-G-401

BASEMENT/CRAWL SPACE PLAN  
SCALE: 1/8" = 1'-0"



MECHANICAL ROOM ENLARGED  
SCALE: 1/4" = 1'-0"

		<div><p><b>APPLIED ENGINEERING SOLUTIONS</b></p><p>440 Martin Luther King, Jr. Blvd., Suite 401 Macon, Georgia 31201 (478) 314-1270 www.aes-pe.com</p></div>	<div><p><b>KEY PLAN</b> SCALE: NONE</p></div>	<div></div>	Drawing Title	BASEMENT/CRAWL SPACE PLAN AND MECHANICAL ROOM ENLARGED	Project Title	STEAM AND CONDENSATE PIPING SYSTEM STUDY		Date	JUNE 22, 2012			
							Project No.	557-10-109						
							Building Number	1	Checked	PJC	Drawn	JSW		
							Location					CARL VINSON VA MEDICAL CENTER DUBLIN, GEORGIA	DRAWING NO.	01-G-001
							FINAL SUBMITTAL						Dwg. 6 of 87	
Revisions		Date												

VA FORM 010-000-0