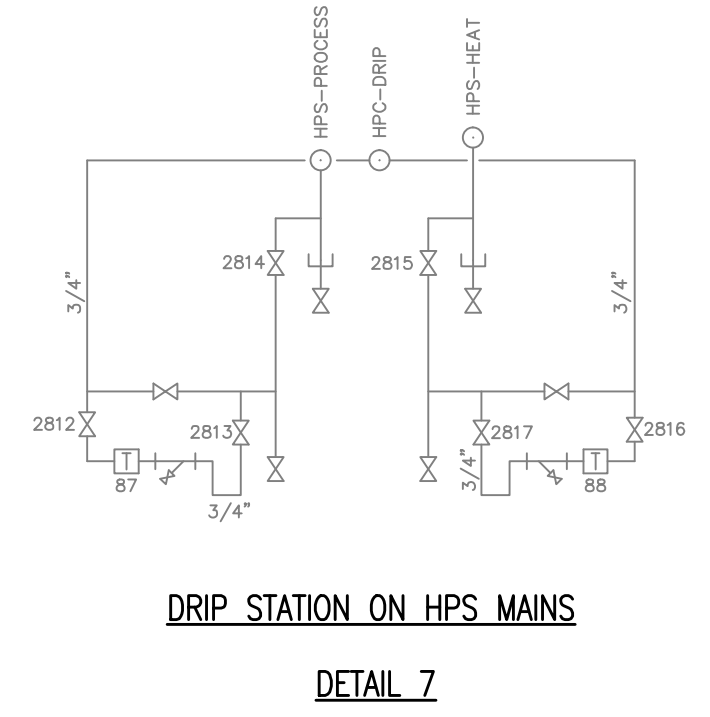
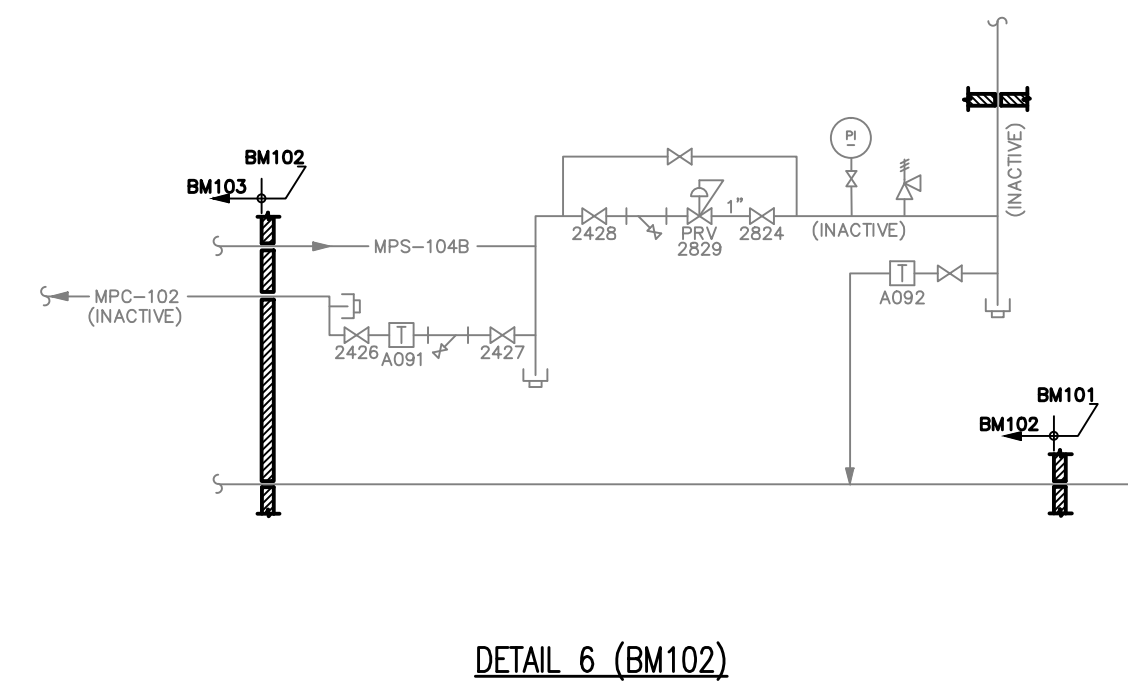
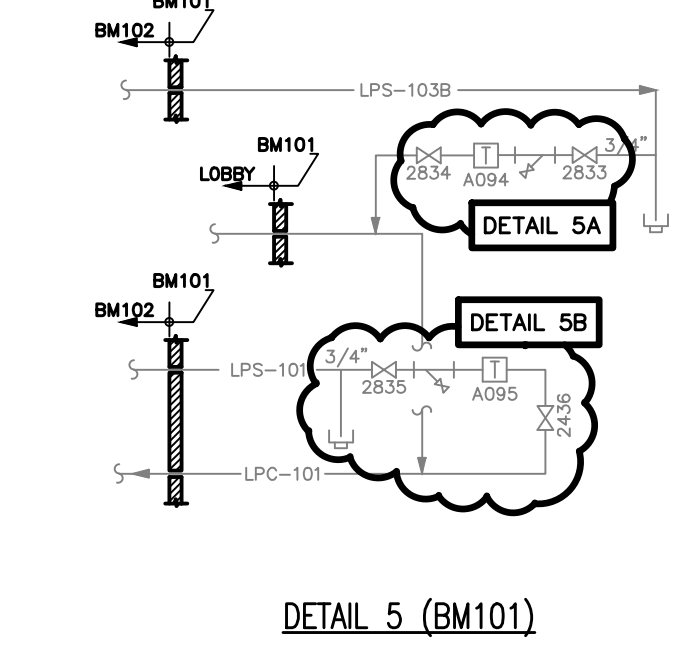

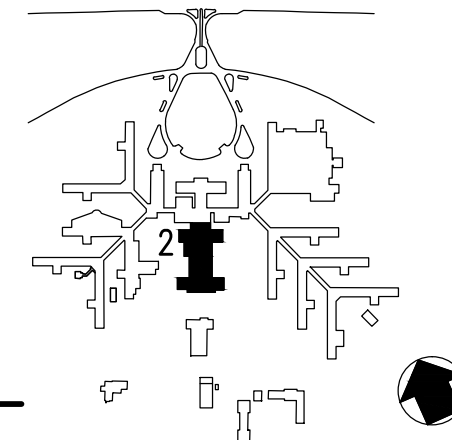
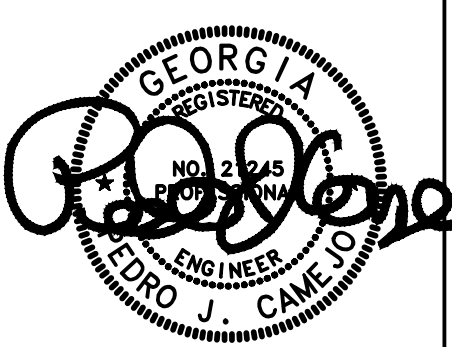


- NOTES:
(THIS SHEET ONLY)
- 1 REMOVE AND HAUL AWAY IN ITS ENTIRETY HPS HEATING STEAM PIPING. TURN OVER TO VA COTR ALL VALVES AND STEAM TRAP TAGS THAT ARE NOT REUSED.
 - 2 PERMANENTLY CAP BRANCH PIPE AS CLOSE TO MAIN AS POSSIBLE.
 - 3 PROVIDE INDICATED 2" CROSS OVER CONNECTION TO SERVE PRV NUMBER 3 FROM HPS PROCESS STEAM.
 - 4 NEW 2" VALVE. REUSE INDICATED VALVE TAG.
 - 5 PROVIDE 2" PIPING CONNECTIONS TO REPLACE EXISTING 2" CROSS OVER VALVE BETWEEN HEATING AND PROCESS HIGH PRESSURE STEAM WITH NEW CROSS OVER WITH ONE MANUAL GATE VALVE AND ONE AUTOMATICALLY CONTROLLED NORMALLY CLOSED 2" VALVE. CONNECT TO TRIDIUM CONTROL SYSTEM WHEN OUTSIDE AIR TEMPERATURE IS BELOW 55f FOR 5 MINUTES OR LONGER. REUSE INDICATED VALVE TAG.
 - 6 PROVIDE PUMP TRAP AND CONNECT TO CONDENSATE LINES AND MOTIVE STEAM. SEE FLOOR PLANS AND DETAILS.
 - 7 PROVIDE AUTOMATIC ELECTRIC ACTUATED NORMALLY CLOSED VALVE AND CONNECT TO TRIDIUM CONTROL SYSTEM WHEN OUTSIDE AIR TEMPERATURE IS BELOW 55f FOR 5 MINUTES OR LONGER. PROVIDE NEW VALVE TAG 0355A.
 - 8 REPLACE EXISTING HEATING ONLY PRESSURE REDUCING STATION AS SCHEDULED AND DETAILED.



PROCESS FLOW DIAGRAMS AND DETAILS
SCALE: NONE

Revisions	Date	 APPLIED ENGINEERING SOLUTIONS 440 Martin Luther King, Jr. Blvd., Suite 401 Macon, Georgia 31201 (478) 314-1270 www.aes-pe.com	 KEY PLAN SCALE: NONE		Drawing Title PROCESS FLOW DIAGRAMS AND DETAILS		Project Title STEAM AND CONDENSATE PIPING SYSTEM STUDY		Date JUNE 22, 2012	
					Building Number 2		Checked PJC	Drawn JSW	Project No. 557-10-109	
					Location CARL VINSON VA MEDICAL CENTER DUBLIN, GEORGIA		Drawing No. 02-G-003		Dwg. 13 Of 87	
					FINAL SUBMITTAL					