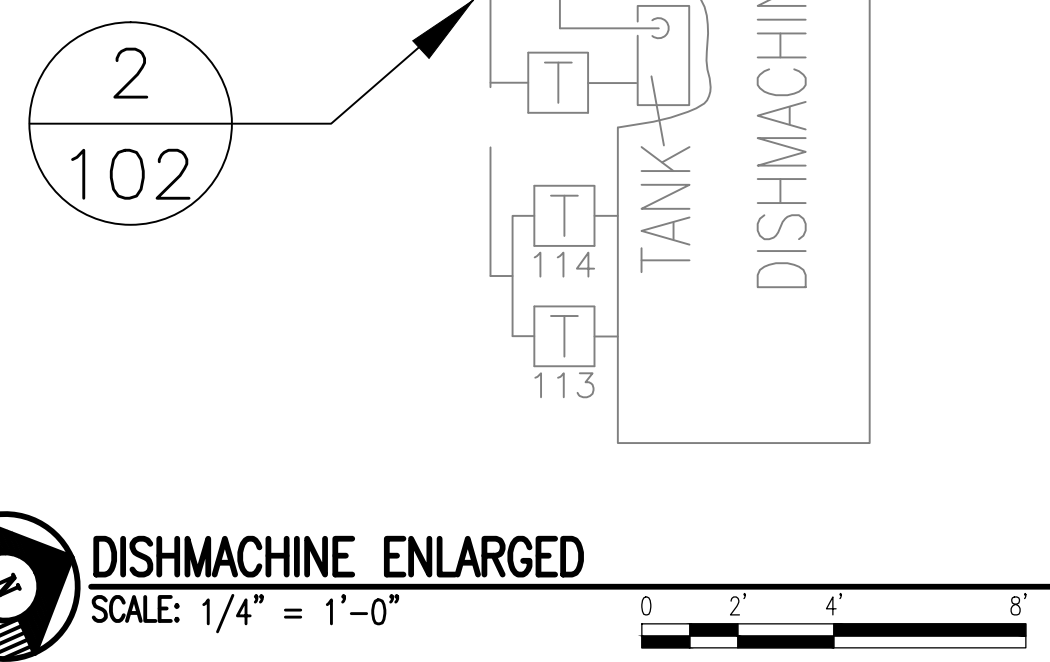
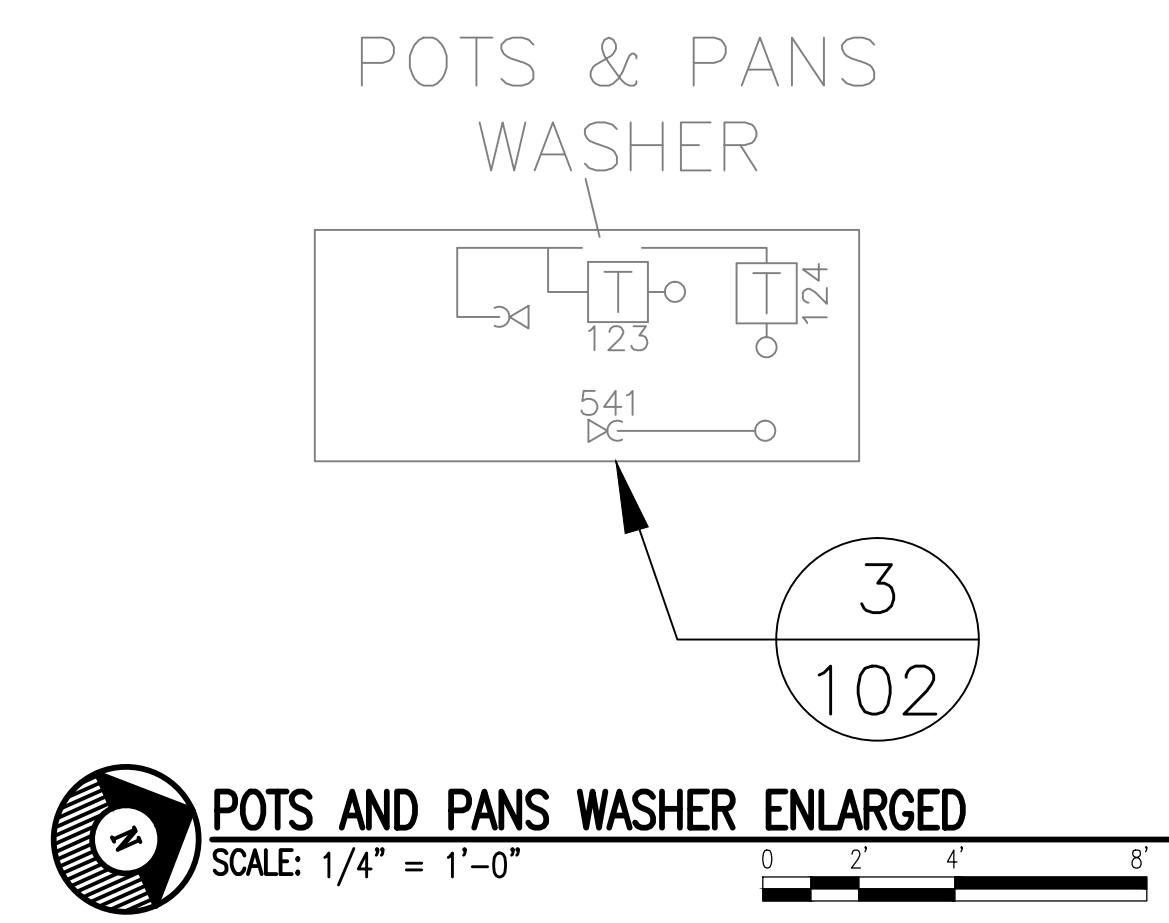
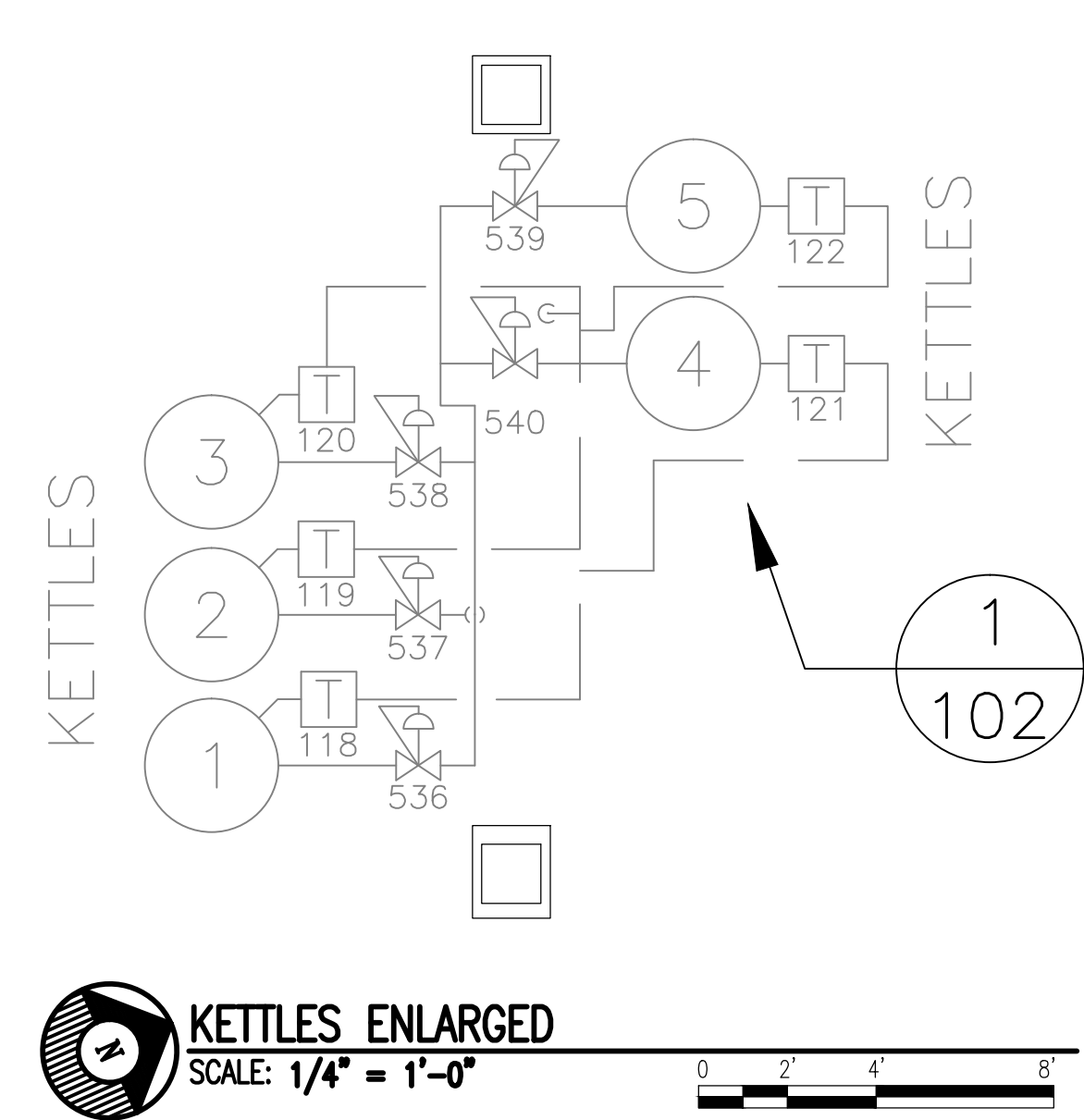
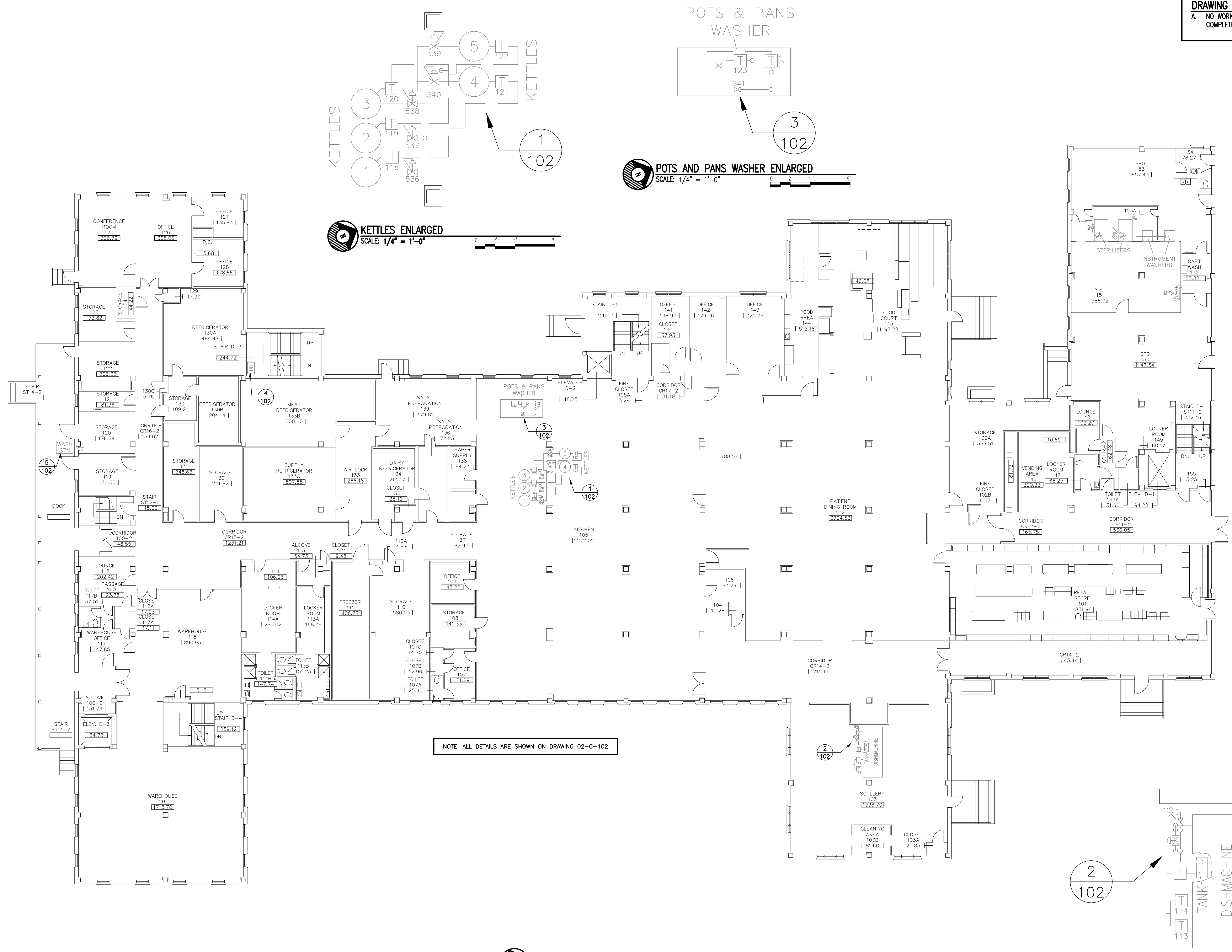


three inches = one foot
one and one-half inches = one foot
one inch = one foot
three-quarters inch = one foot
one-half inch = one foot
three-eighths inch = one foot
one-quarter inch = one foot
one-eighth inch = one foot

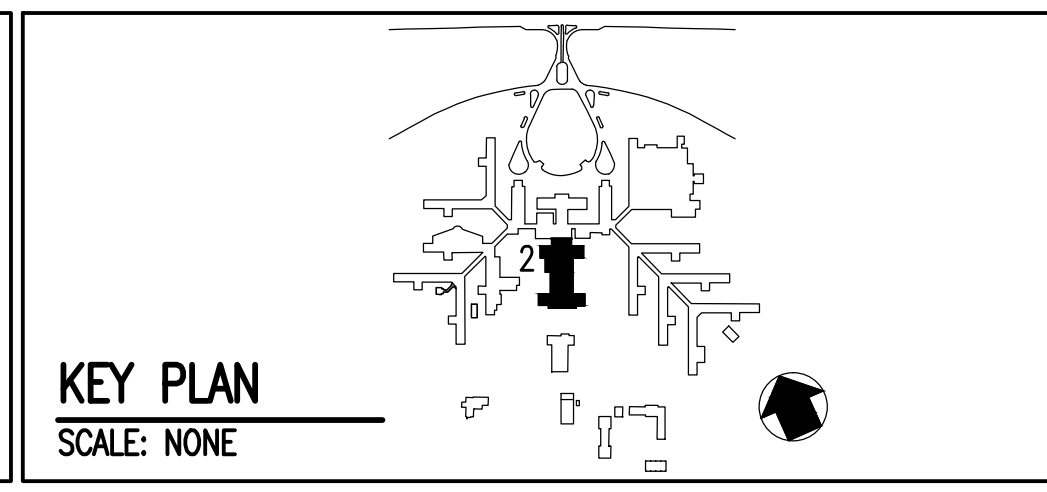
A
B
C
D
E
F
G

DRAWING NOTES:
A. NO WORK REQUIRED THIS AREA. SHEET INCLUDED FOR COMPLETENESS OF RECORD DRAWINGS.



FIRST FLOOR PLAN
SCALE: 3/32" = 1'-0"

DISHMACHINE ENLARGED
SCALE: 1/4" = 1'-0"



Revisions	Date

AES
APPLIED ENGINEERING SOLUTIONS
440 Martin Luther King, Jr. Blvd., Suite 401
Macon, Georgia 31201
(478) 314-1270
www.aes-pe.com

Drawing Title
FIRST FLOOR PLAN AND ENLARGED PLANS
FINAL SUBMITTAL

Project Title
STEAM AND CONDENSATE PIPING SYSTEM STUDY
Building Number **2**
Checked **PJC**
Drawn **JSW**
Location **CARL VINSON VA MEDICAL CENTER DUBLIN, GEORGIA**

Date
JUNE 22, 2012
Project No.
557-10-109
Drawing No.
02-G-101
Dwg. 14 Of 87

Veterans Administration