

1
2
3
4
5
6
7
8
9

A
three inches = one foot

B
one and one-half inches = one foot

C
one inch = one foot

D
three-quarters inch = one foot

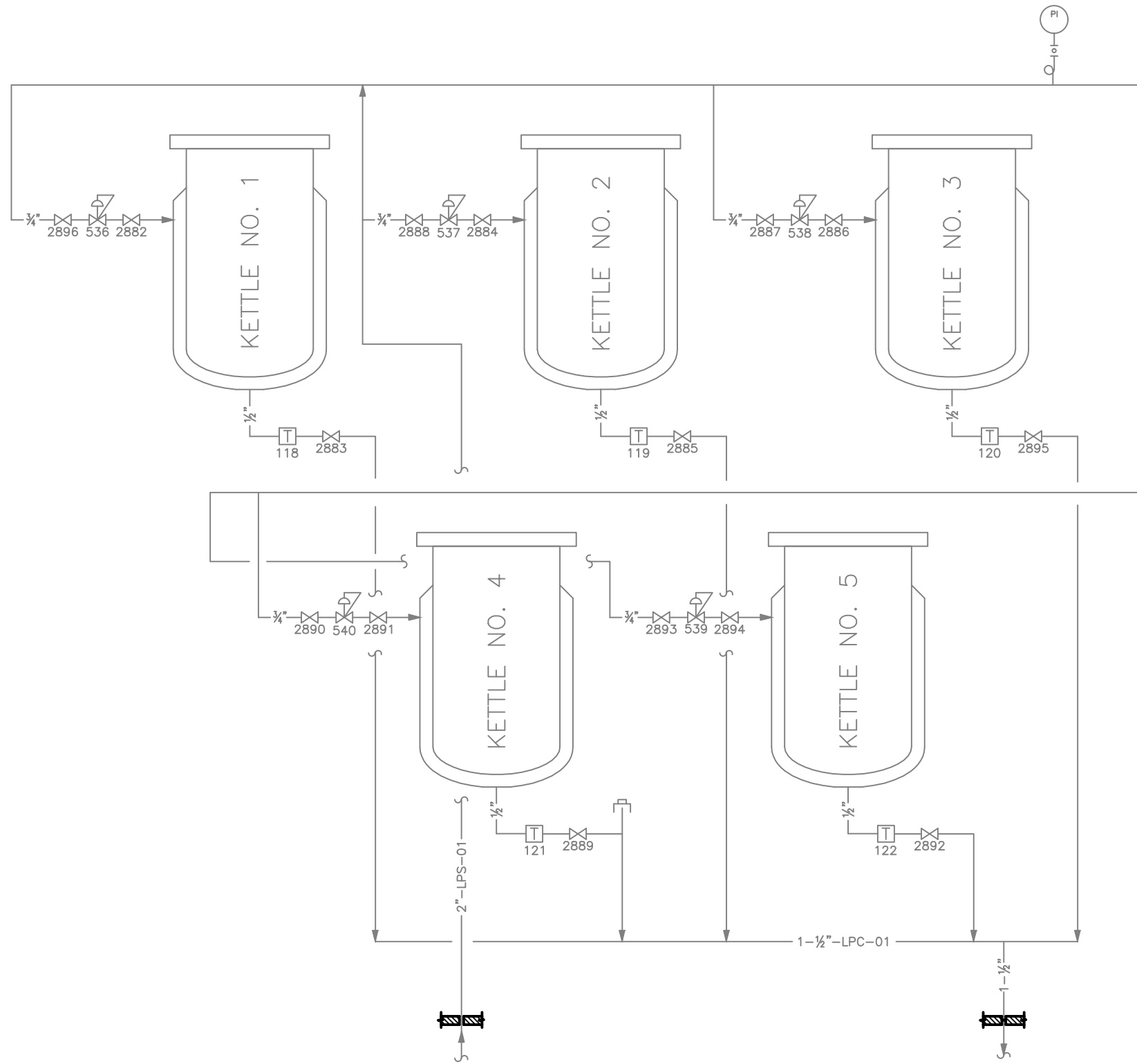
E
one-half inch = one foot

F
three-eighths inch = one foot

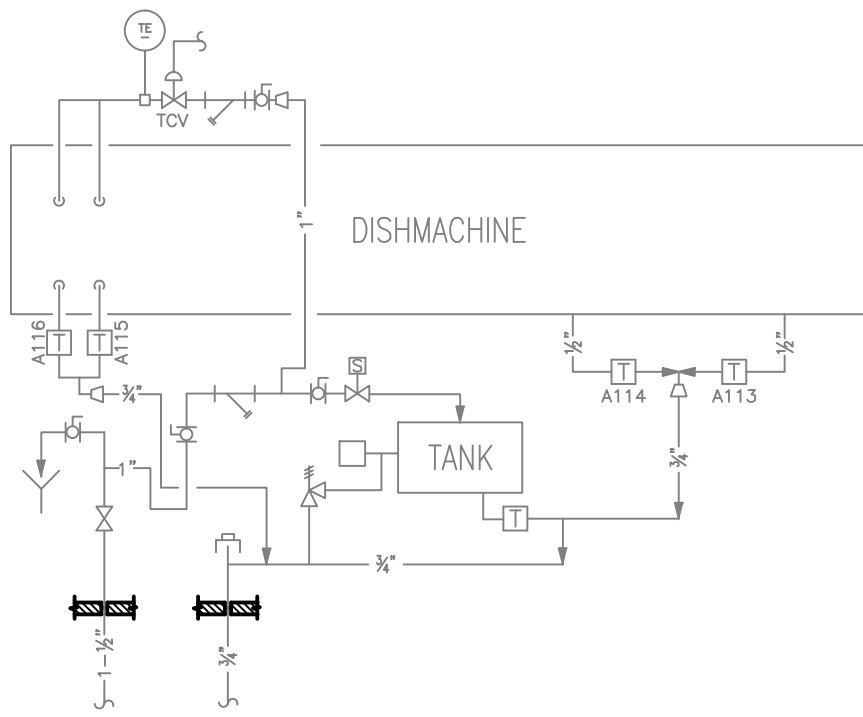
G
one-quarter inch = one foot

H
one-eighth inch = one foot

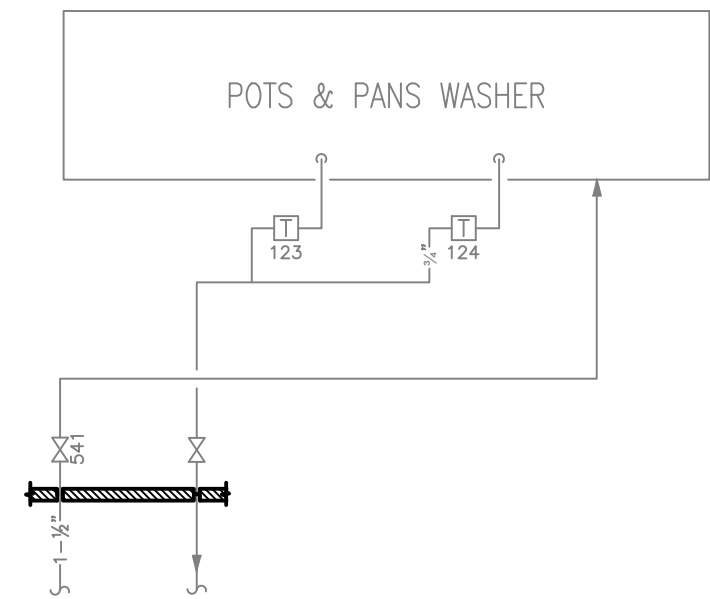
DRAWING NOTES:
A. NO WORK REQUIRED THIS AREA. SHEET INCLUDED FOR COMPLETENESS OF RECORD DRAWINGS.



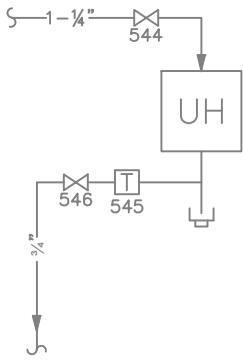
DETAIL #1 - KETTLES



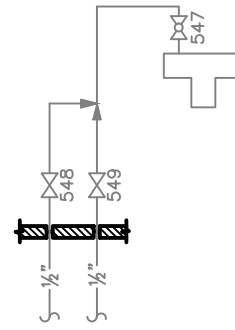
DETAIL #2 - DISH MACHINE



DETAIL #3 - POTS AND PANS WASHER



DETAIL #4 - UNIT HEATER



DETAIL #5 - WASH STATION

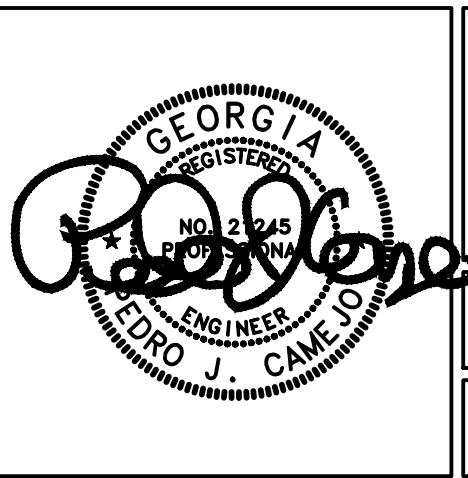
NOTE: ALL DETAILS ARE SHOWN ON DRAWING 02-G-101

PROCESS FLOW DIAGRAMS AND DETAILS
SCALE: NONE

Revisions	Date

AES
APPLIED ENGINEERING SOLUTIONS
440 Martin Luther King, Jr. Blvd., Suite 401
Macon, Georgia 31201
(478) 314-1270
www.aes-pe.com

KEY PLAN
SCALE: NONE



Drawing Title
PROCESS FLOW DIAGRAMS AND DETAILS

FINAL SUBMITTAL

Project Title
STEAM AND CONDENSATE PIPING SYSTEM STUDY

Building Number 2	Checked PJC	Drawn JSW
-----------------------------	-----------------------	---------------------

Location **CARL VINSON VA MEDICAL CENTER DUBLIN, GEORGIA**

Date
JUNE 22, 2012

Project No.
557-10-109

Drawing No.
02-G-102

Dwg. 15 Of 87

Veterans Administration