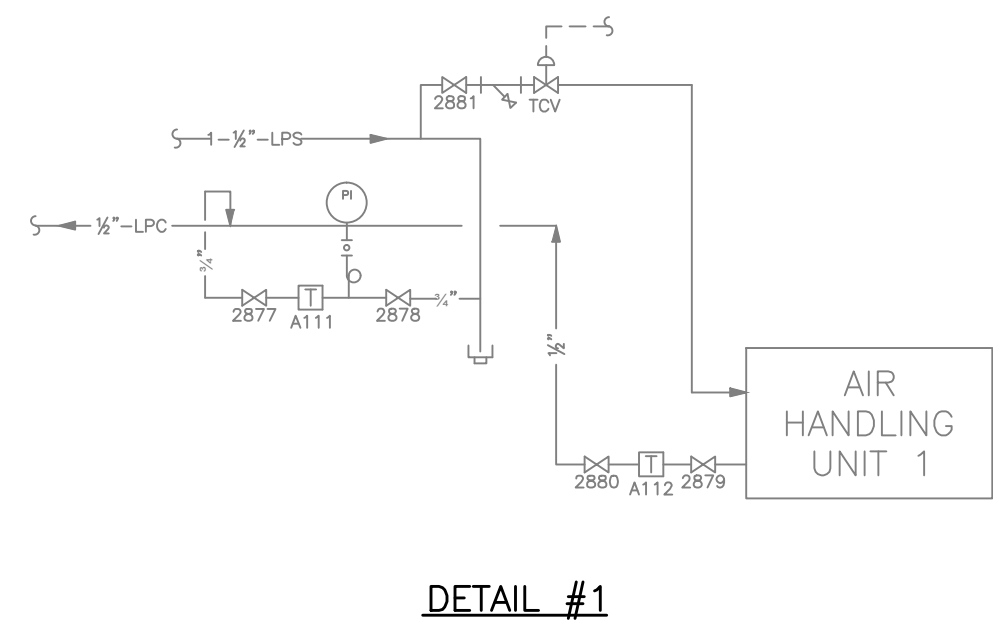
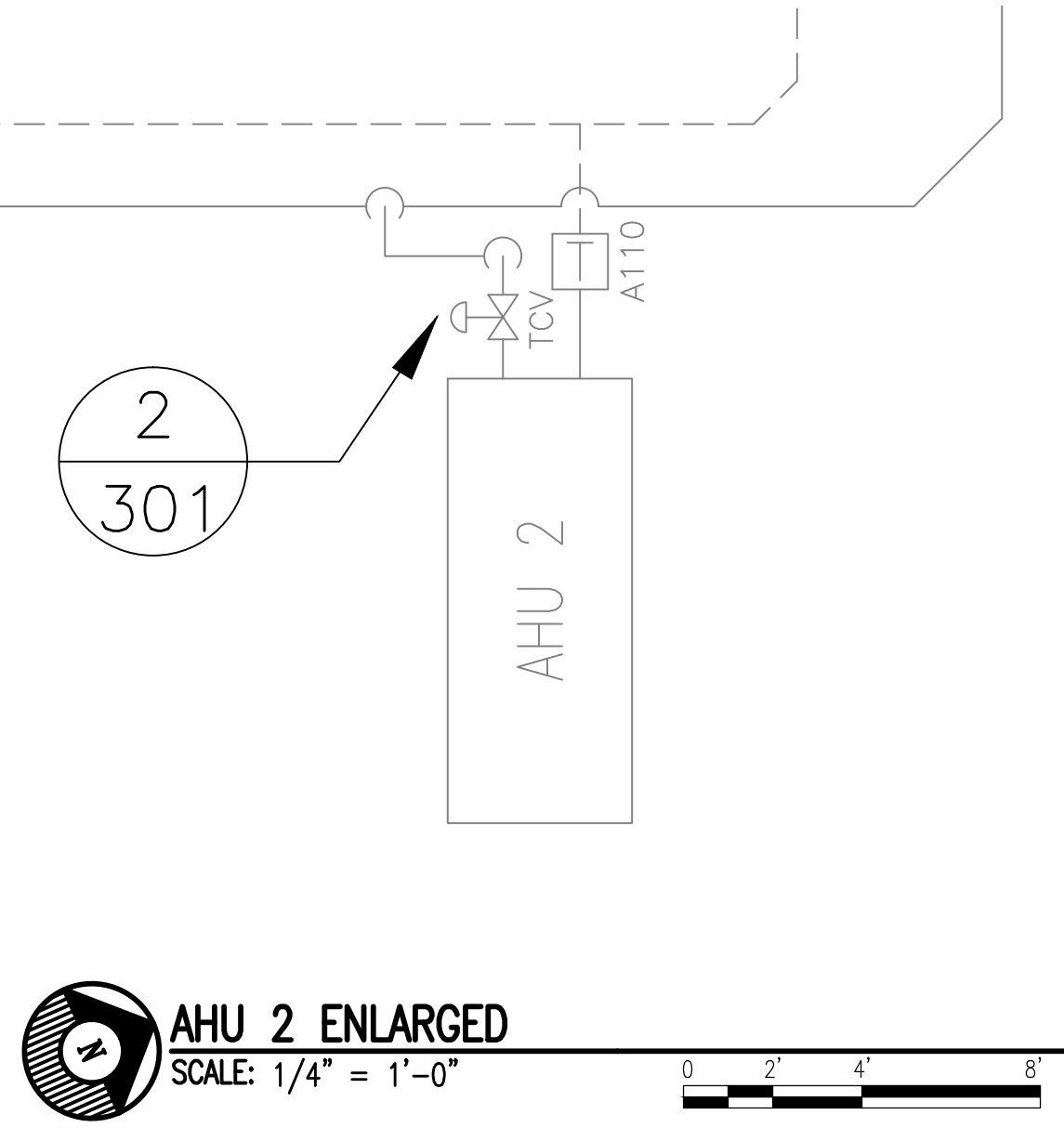
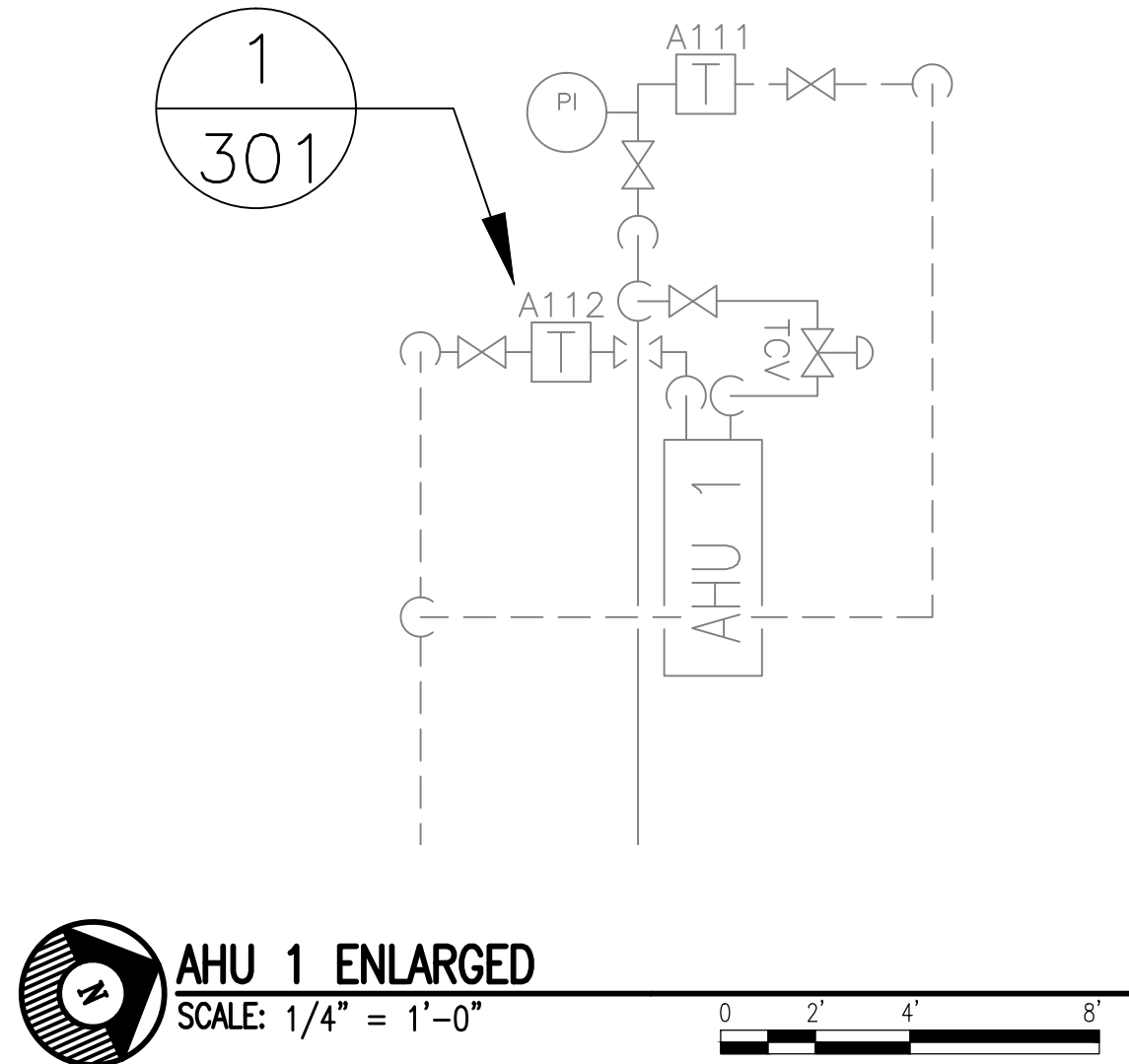
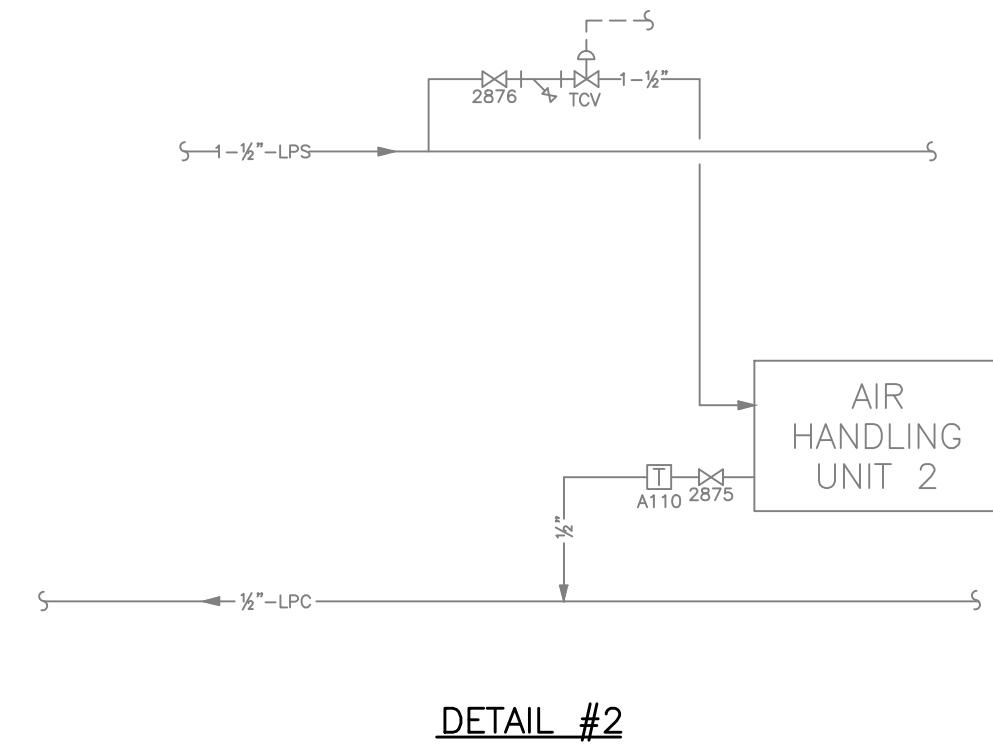


three inches = one foot  
one and one-half inches = one foot  
one inch = one foot  
three-quarters inch = one foot  
one-half inch = one foot  
one-third inch = one foot  
one-quarter inch = one foot  
one-eighth inch = one foot

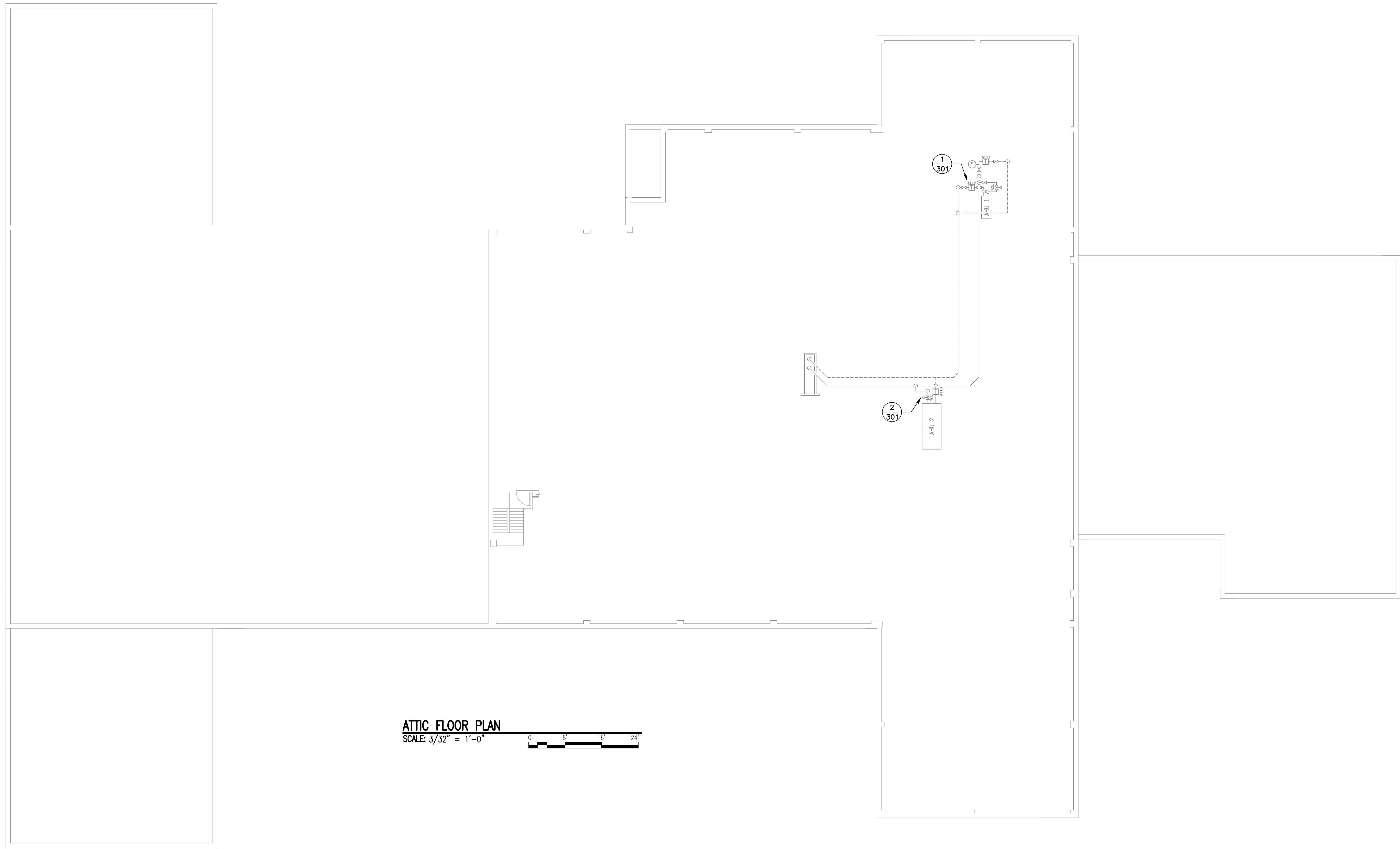
DRAWING NOTES:  
A. NO WORK REQUIRED THIS AREA. SHEET INCLUDED FOR COMPLETENESS OF RECORD DRAWINGS.



**DETAILS NO. 1**  
SCALE: NONE

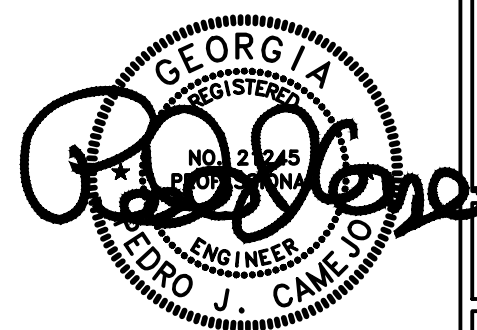
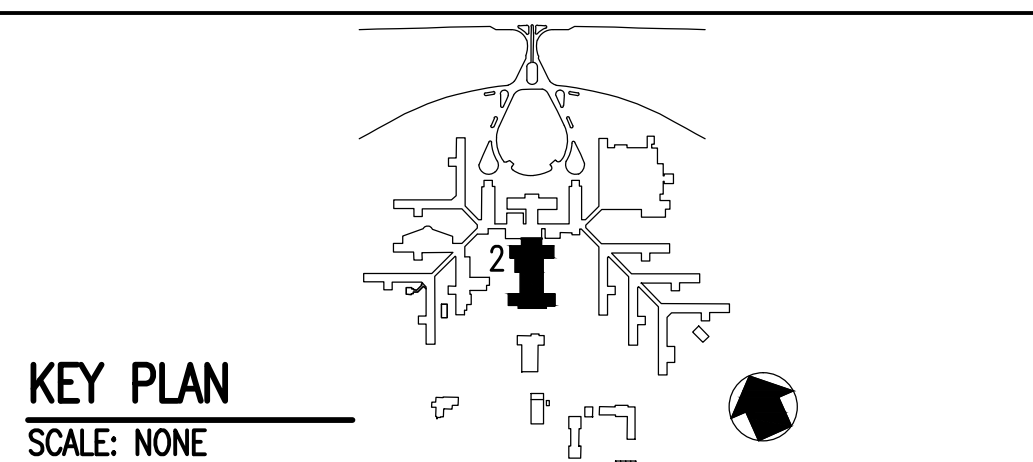


**DETAILS NO. 2**  
SCALE: NONE



Revisions	Date

**AES**  
APPLIED ENGINEERING  
SOLUTIONS  
440 Martin Luther King, Jr. Blvd., Suite 401  
Macon, Georgia 31201  
(478) 314-1270  
www.aes-pe.com



Drawing Title
ATTIC FLOOR PLAN AND DETAILS
FINAL SUBMITTAL

Project Title
STEAM AND CONDENSATE PIPING SYSTEM STUDY
Building Number
2
Location
CARL VINSON VA MEDICAL CENTER DUBLIN, GEORGIA

Date
JUNE 22, 2012
Project No.
557-10-109
Drawing No.
02-G-301
Dwg. 17 Of 87

Veterans  
Administration