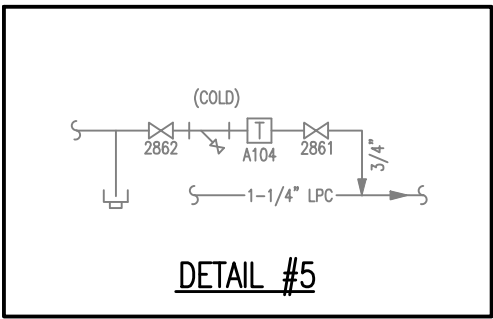
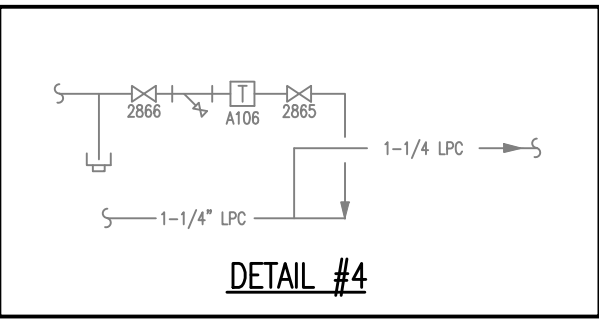
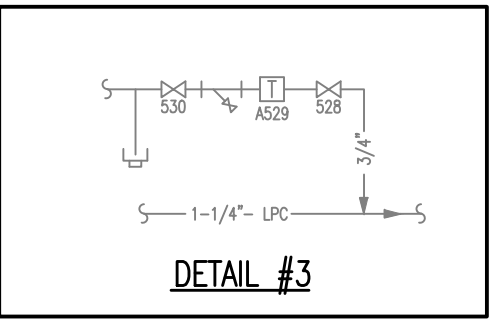
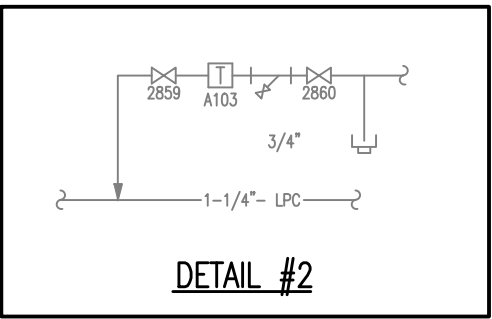
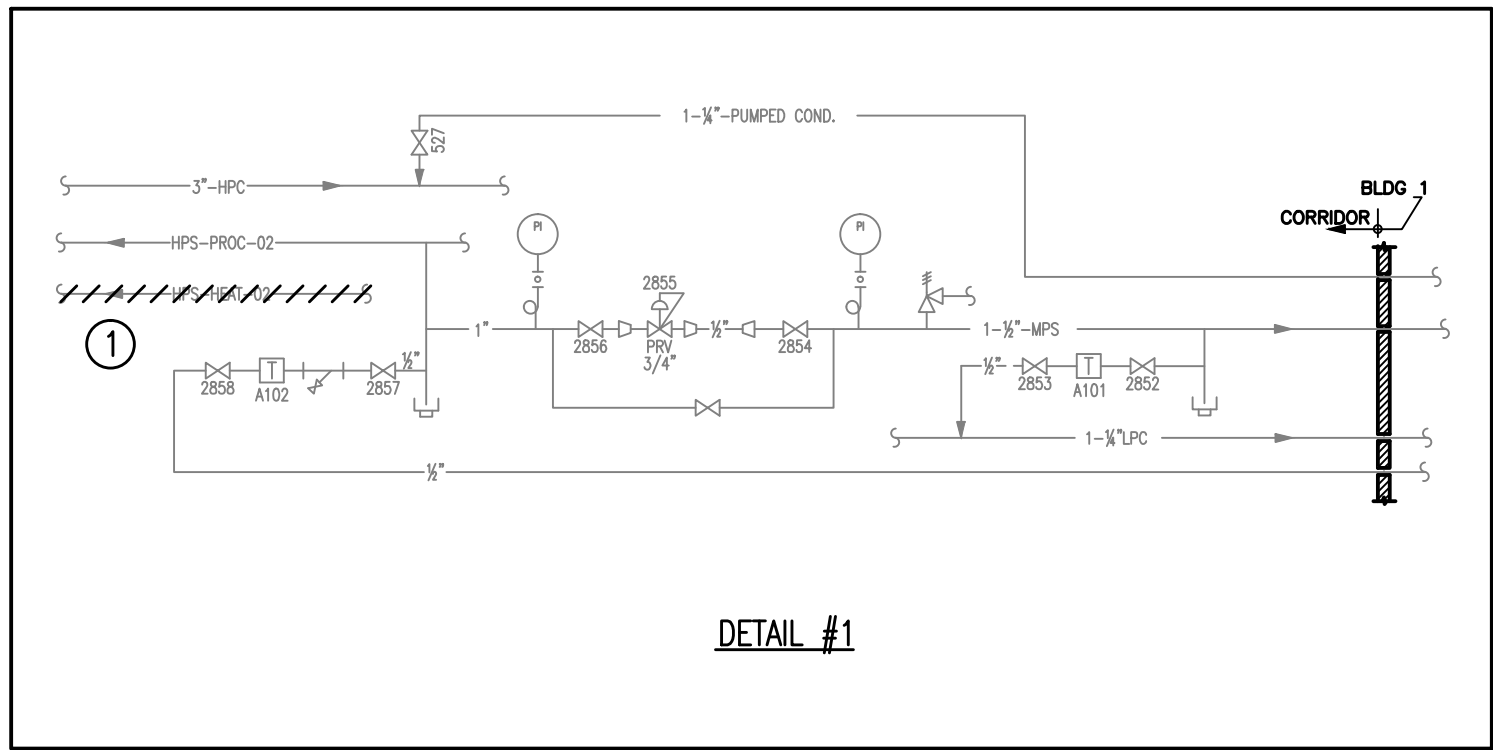
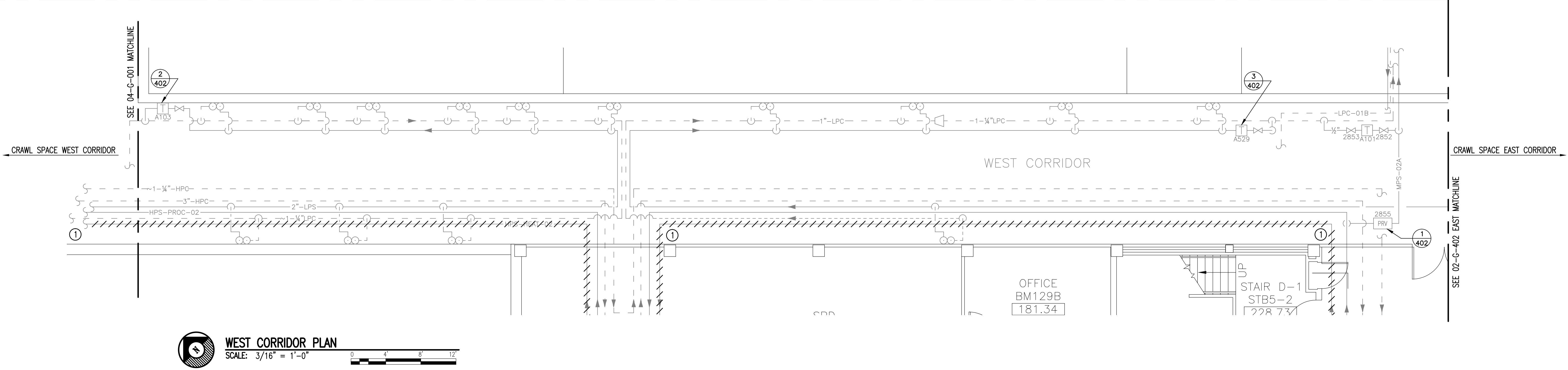
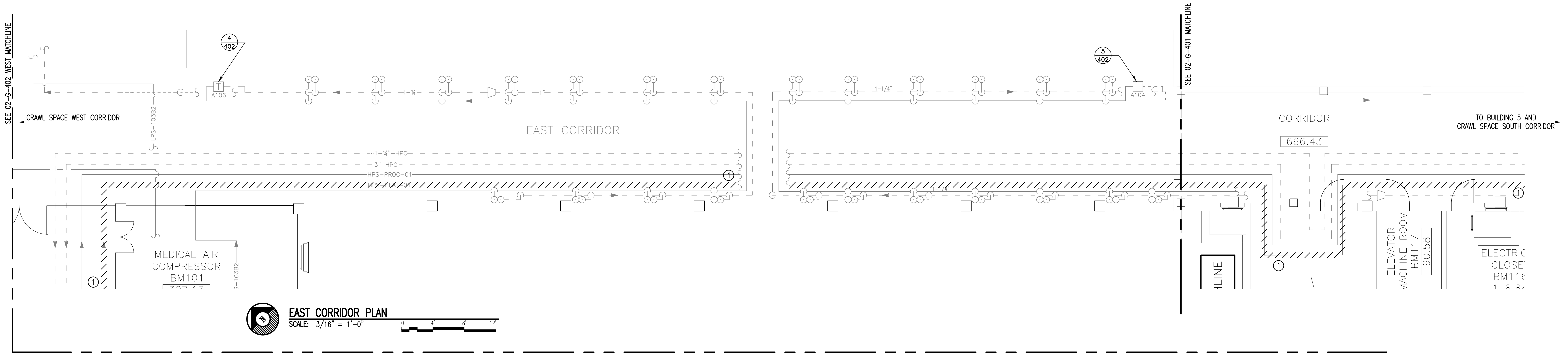


three inches = one foot
one and one-half inches = one foot
one inch = one foot
three-quarters inch = one foot
one-half inch = one foot
three-eighths inch = one foot
one-quarter inch = one foot
one-eighth inch = one foot

NOTES:
(THIS SHEET ONLY)
① REMOVE AND HAUL AWAY IN ITS ENTIRETY HPS HEATING STEAM PIPING. TURN OVER TO VA COTR ALL VALVES AND STEAM TRAP TAGS THAT ARE NOT REUSED.



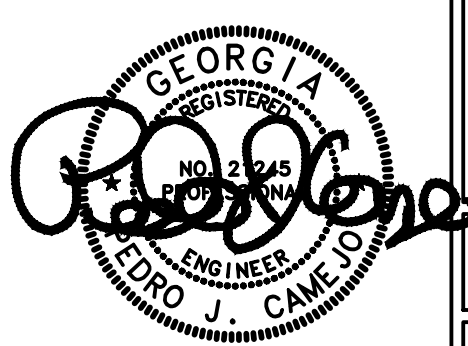
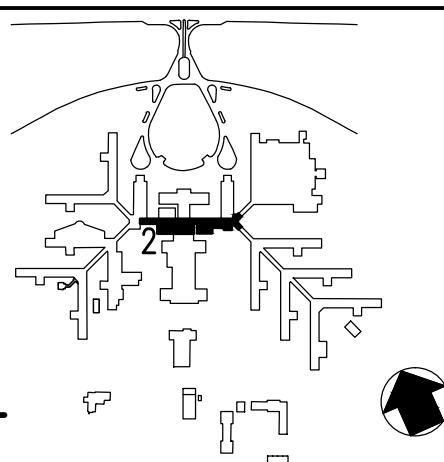
PROCESS FLOW DIAGRAMS AND DETAILS
SCALE: NONE



Revisions	Date

AES
APPLIED ENGINEERING
SOLUTIONS
440 Martin Luther King, Jr. Blvd., Suite 401
Macon, Georgia 31201
(478) 314-1270
www.aes-pe.com

KEY PLAN
SCALE: NONE



Drawing Title
**PROCESS FLOW
DIAGRAMS, DETAILS
AND CORRIDOR PLANS**

FINAL SUBMITTAL

Project Title
**STEAM AND CONDENSATE
PIPING SYSTEM STUDY**

Building Number
2

Location
CARL VINSON VA MEDICAL CENTER
DUBLIN, GEORGIA

Date
JUNE 22, 2012

Project No.
557-10-109

Drawing No.
02-G-402
Dwg. 19 Of 87

Veterans
Administration