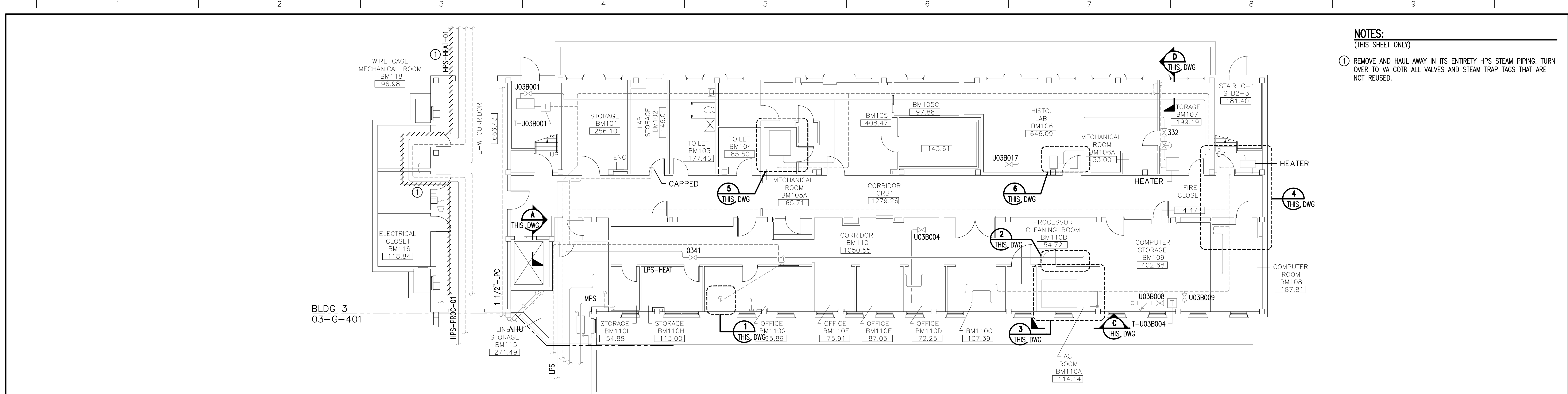
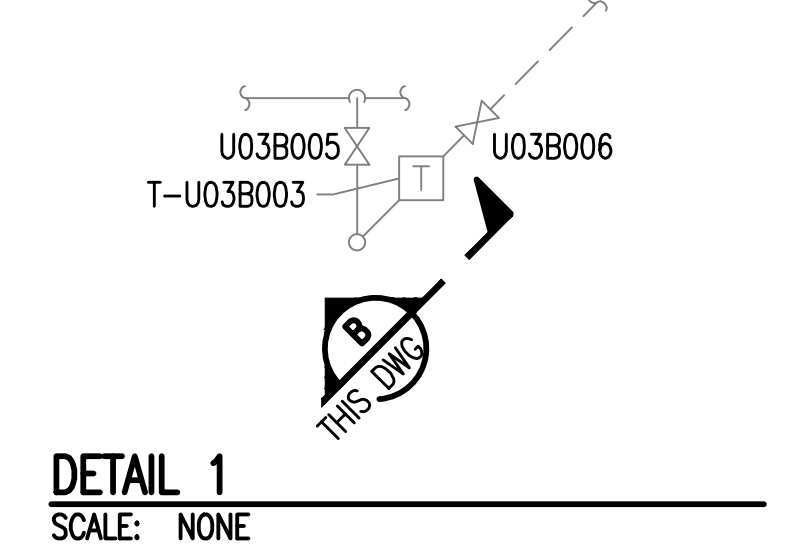
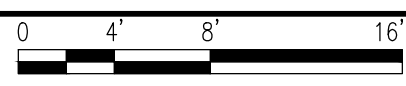


three inches = one foot
one and one-half inches = one foot
one inch = one foot
three-quarters inch = one foot
one-half inch = one foot
one-quarter inch = one foot
three-eighths inch = one foot
one-eighth inch = one foot

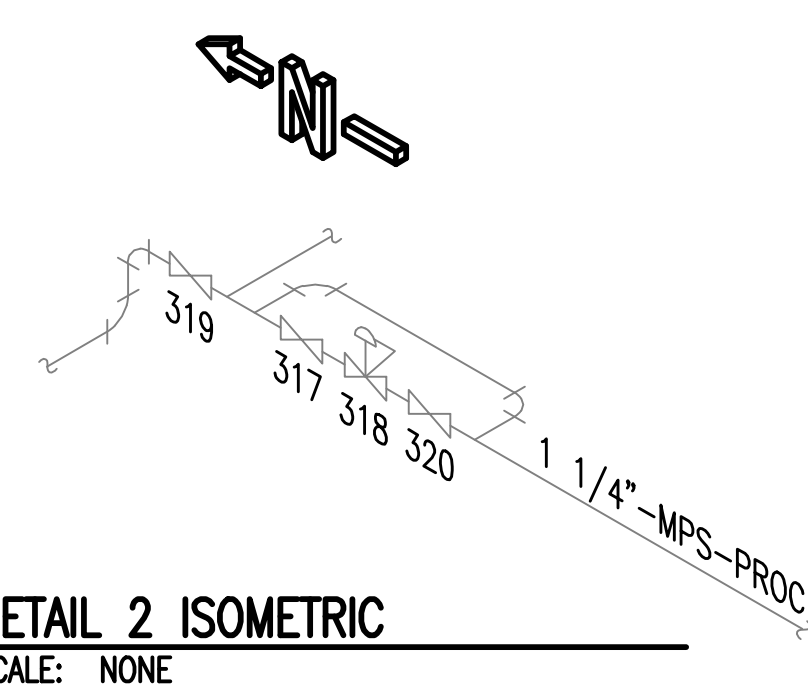


NOTES:
(THIS SHEET ONLY)
① REMOVE AND HAUL AWAY IN ITS ENTIRETY HPS STEAM PIPING. TURN OVER TO VA COTR ALL VALVES AND STEAM TRAP TAGS THAT ARE NOT REUSED.

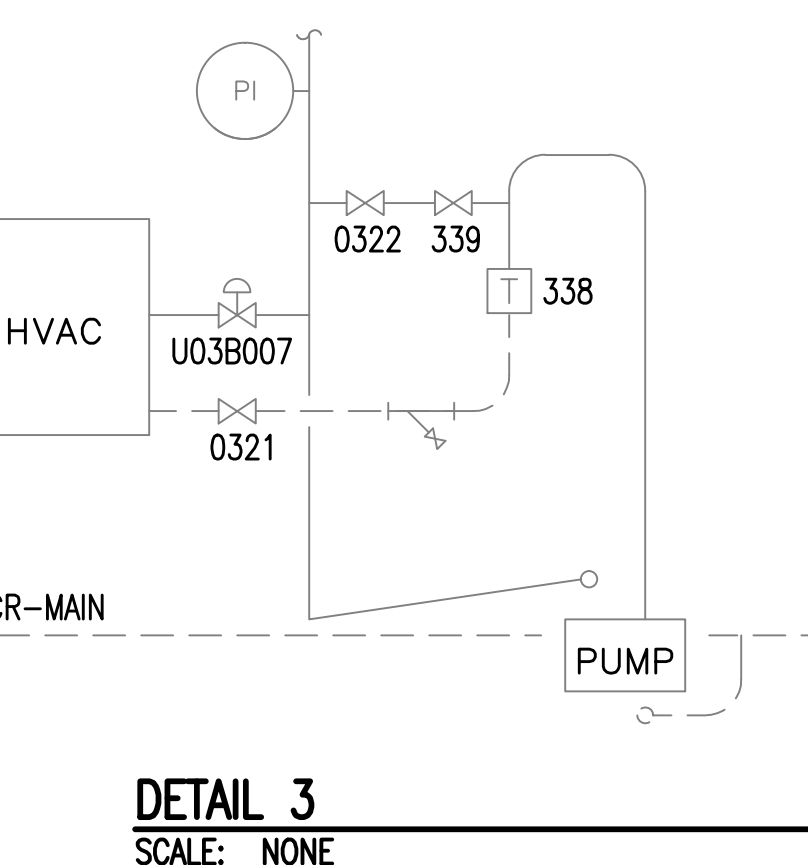
**BUILDING 3
BASEMENT FLOOR PLAN**
SCALE: 1/8" = 1'-0"



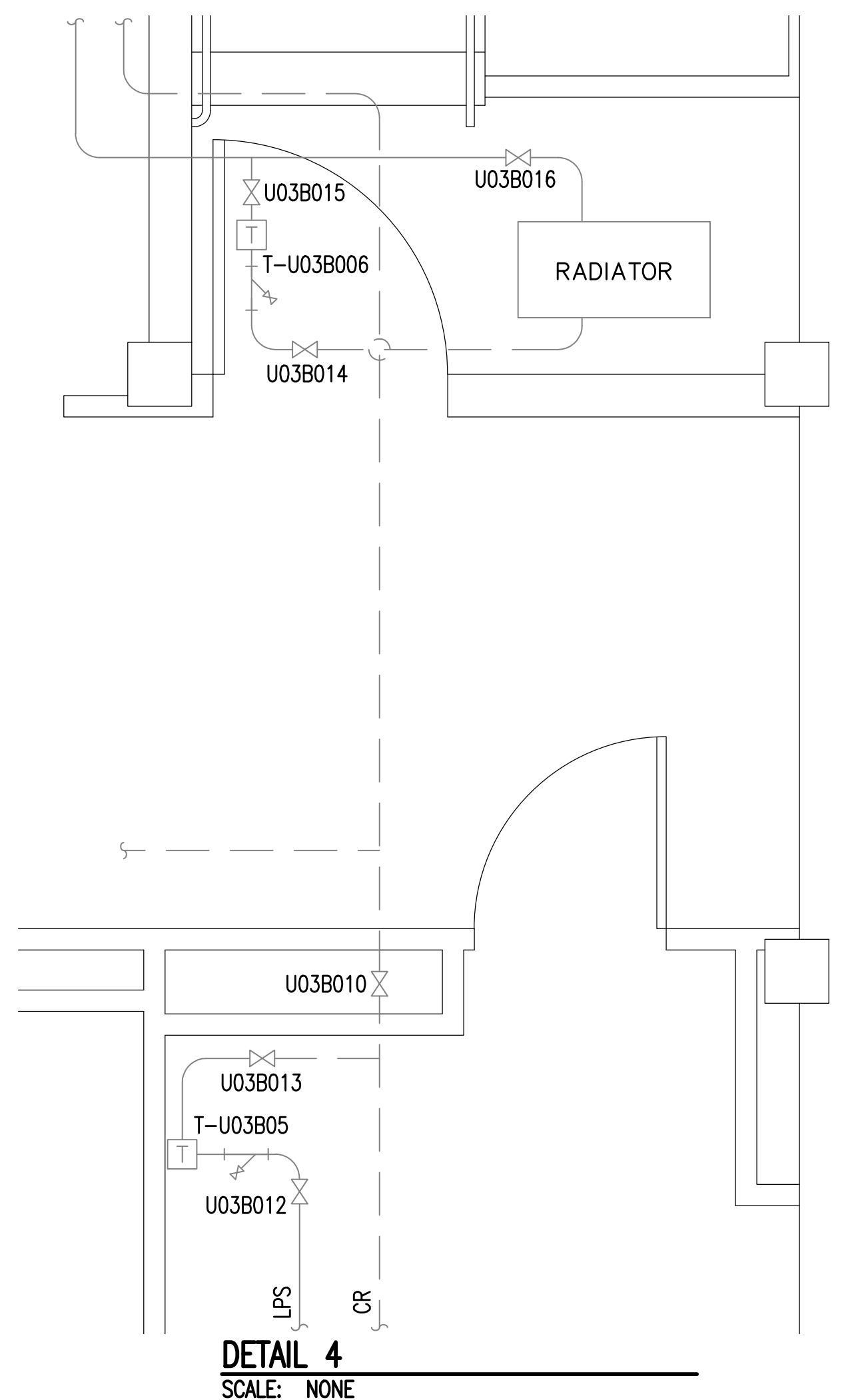
DETAIL 1
SCALE: NONE



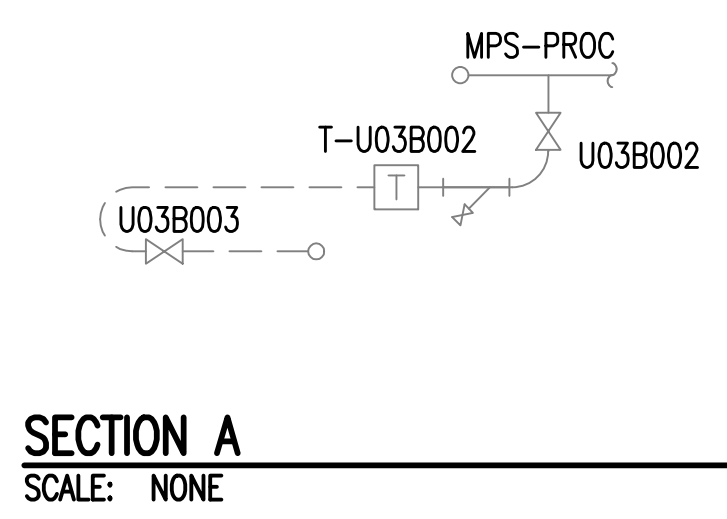
DETAIL 2 ISOMETRIC
SCALE: NONE



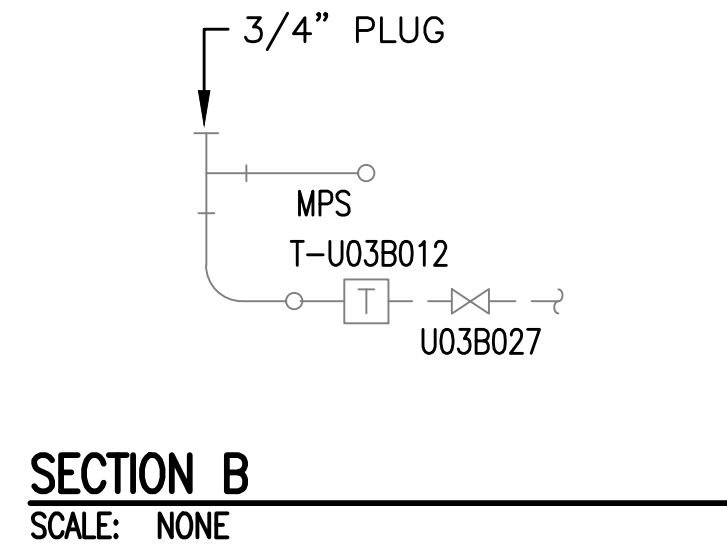
DETAIL 3
SCALE: NONE



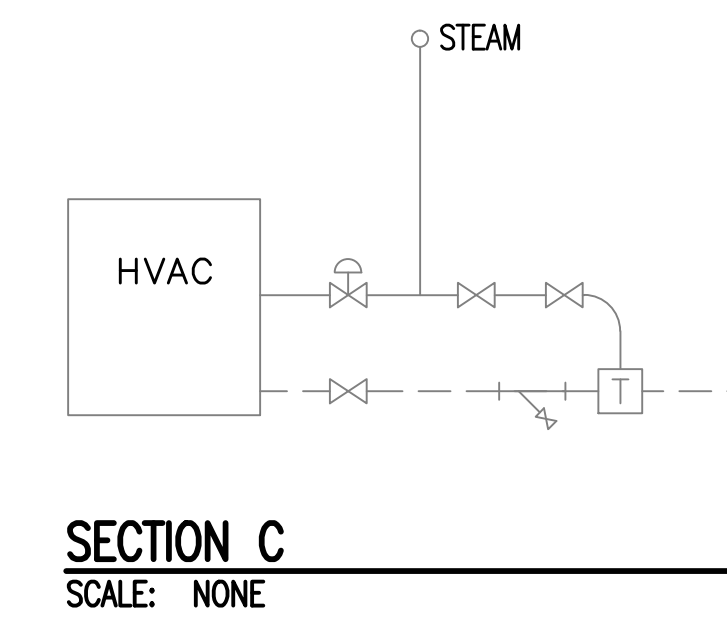
DETAIL 4
SCALE: NONE



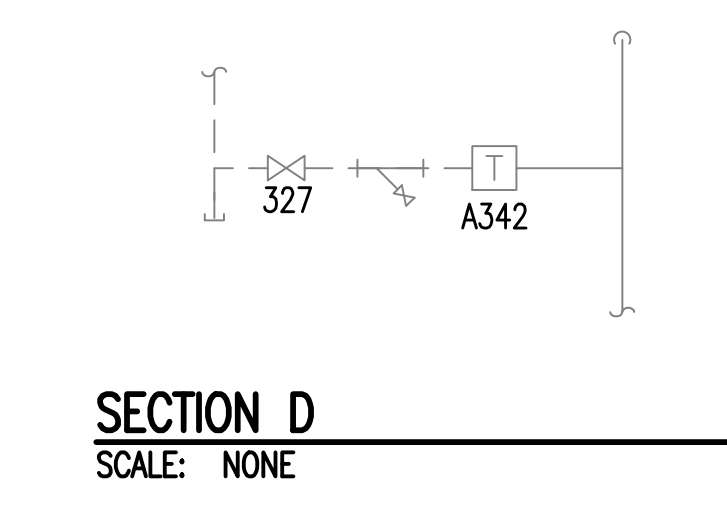
SECTION A
SCALE: NONE



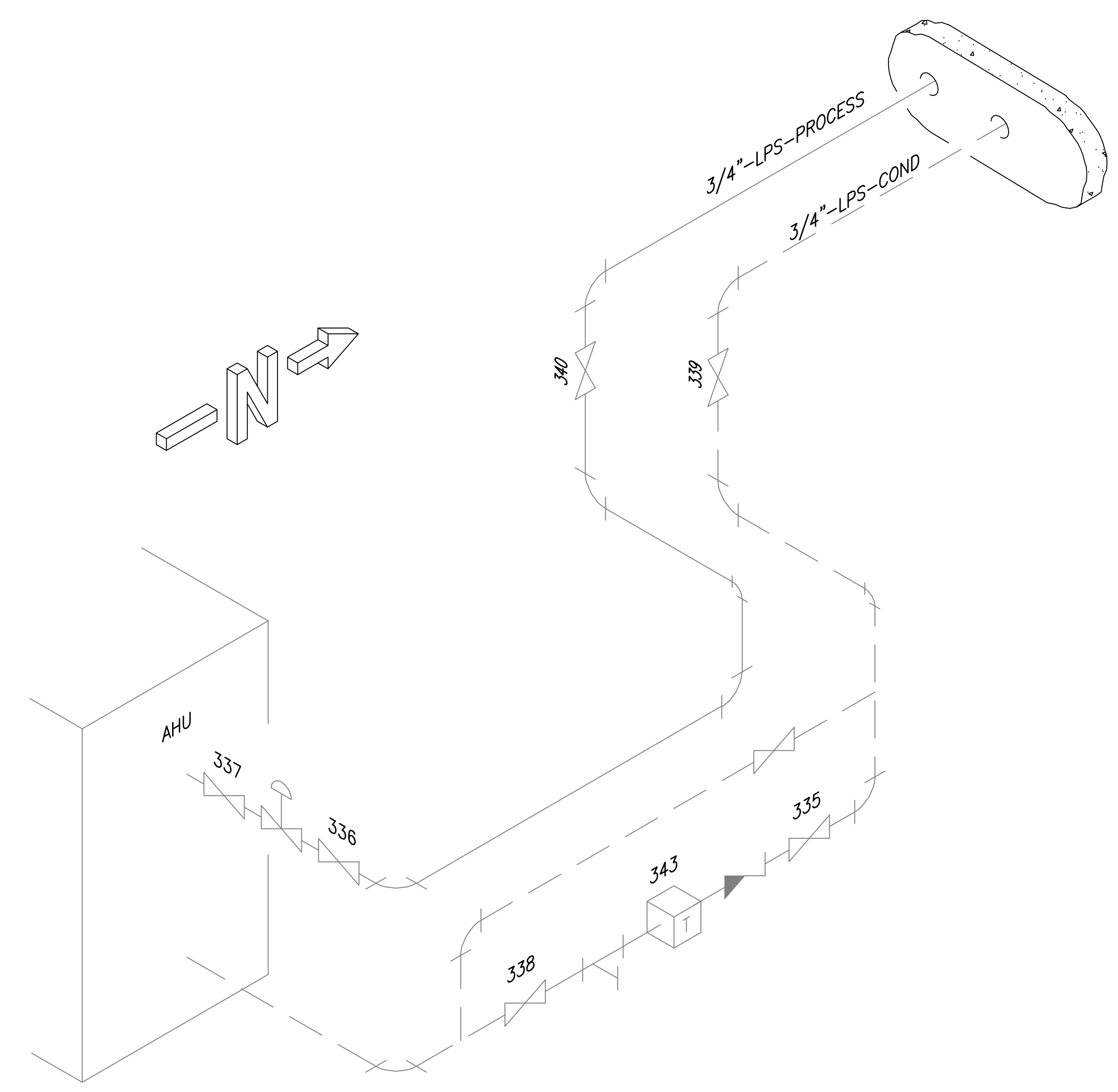
SECTION B
SCALE: NONE



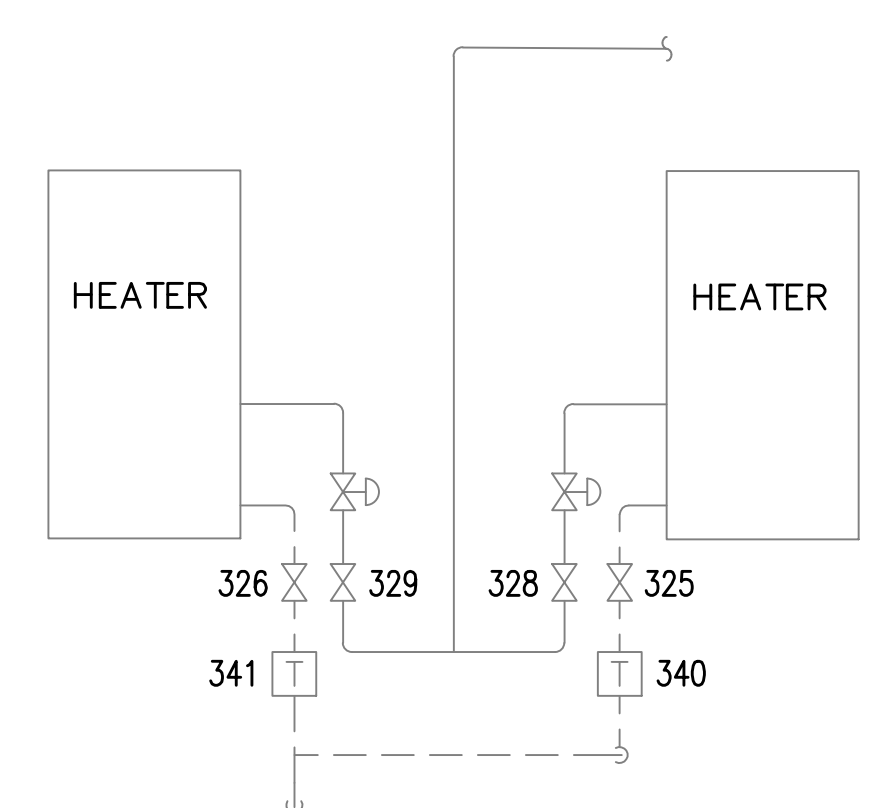
SECTION C
SCALE: NONE






SECTION D
SCALE: NONE



DETAIL 5 ISOMETRIC
SCALE: NONE



DETAIL 6
SCALE: NONE

		<div><p>APPLIED ENGINEERING SOLUTIONS</p><p>440 Martin Luther King, Jr. Blvd., Suite 401 Macon, Georgia 31201 (478) 314-1270 www.aes-pe.com</p></div>	<div><p>KEY PLAN SCALE: NONE</p></div>	<div><p><i>E. J. Canale</i></p></div>	Drawing Title		Project Title		Date	
BASEMENT FLOOR PLAN AND DETAILS					STEAM AND CONDENSATE PIPING SYSTEM STUDY		JUNE 22, 2012			
					Building Number 3		Checked PJC	Drawn JSW	Project No. 557-10-109	
FINAL SUBMITTAL					Location CARL VINSON VA MEDICAL CENTER DUBLIN, GEORGIA		DRAWING NO. 03-G-001		Dwg. 20 of 87	
Revisions		Date	U.S. GOVERNMENT PRINTING OFFICE: 1984-440-467							