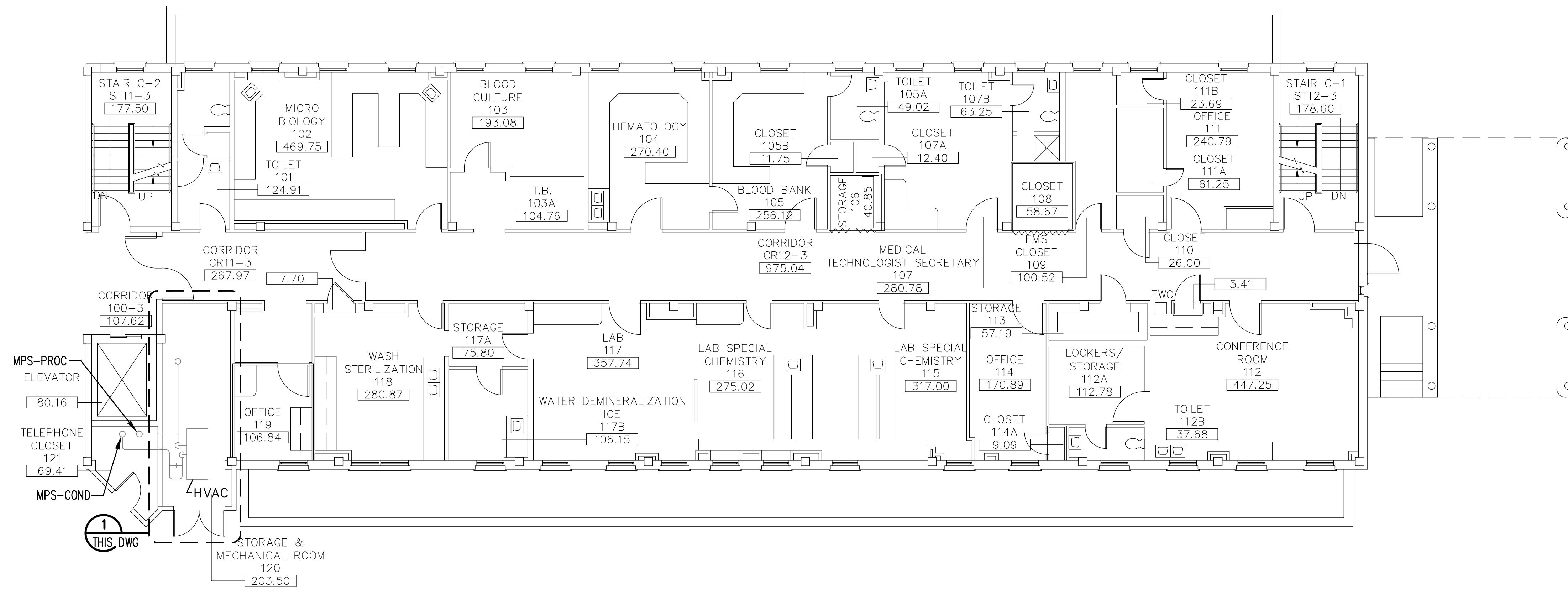
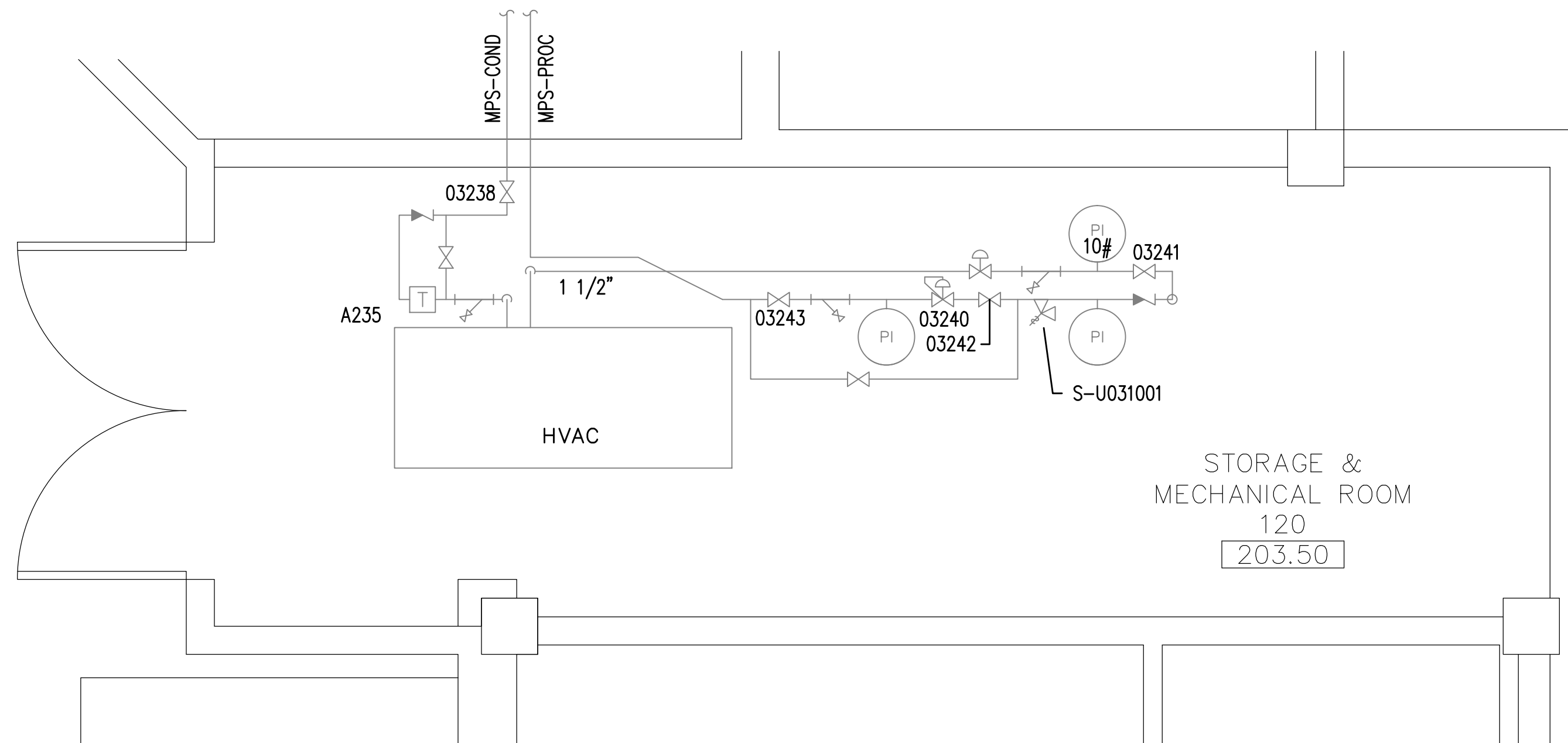


three inches = one foot
one and one-half inches = one foot
one inch = one foot
three-quarters inch = one foot
one-half inch = one foot
three-eighths inch = one foot
one-quarter inch = one foot
one-eighth inch = one foot

DRAWING NOTES:
A. NO WORK REQUIRED THIS AREA. SHEET INCLUDED FOR COMPLETENESS OF RECORD DRAWINGS.



**BUILDING 3
FIRST FLOOR PLAN**
SCALE: 1/8" = 1'-0"

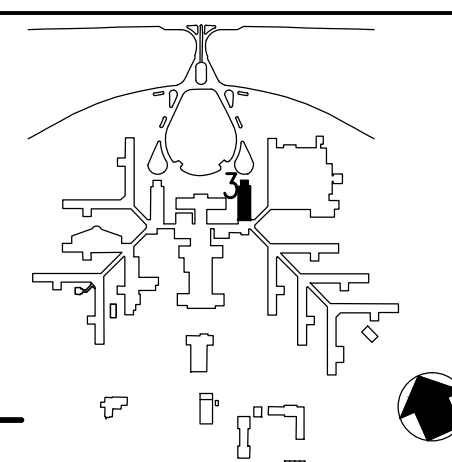


DETAIL 1
SCALE: NONE

Revisions	Date

AES
APPLIED ENGINEERING
SOLUTIONS
440 Martin Luther King, Jr. Blvd., Suite 401
Macon, Georgia 31201
(478) 314-1270
www.aes-pe.com

KEY PLAN
SCALE: NONE



Drawing Title FIRST FLOOR PLAN AND DETAIL		Project Title STEAM AND CONDENSATE PIPING SYSTEM STUDY		Date JUNE 22, 2012
2		Building Number 3	Checked PJC	Drawn JSW
		DRAWING NO. 03-G-101		
FINAL SUBMITTAL		Location CARL VINSON VA MEDICAL CENTER DUBLIN, GEORGIA		Dwg. 21 of 87

**Veterans
Administration**