

1
2
3
4
5
6
7
8
9

A
three inches = one foot

B
one and one-half inches = one foot

C
one inch = one foot

D
three-quarters inch = one foot

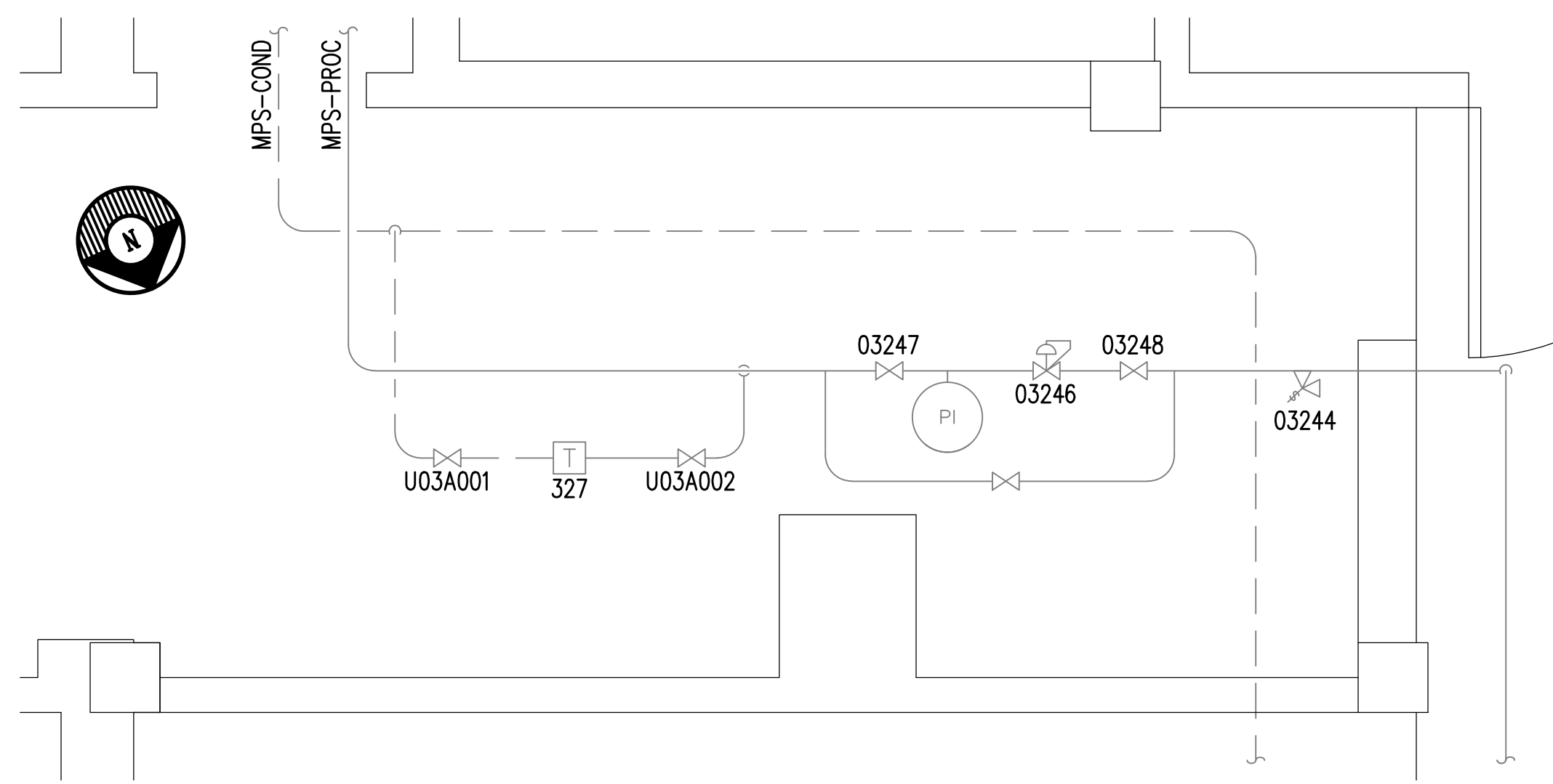
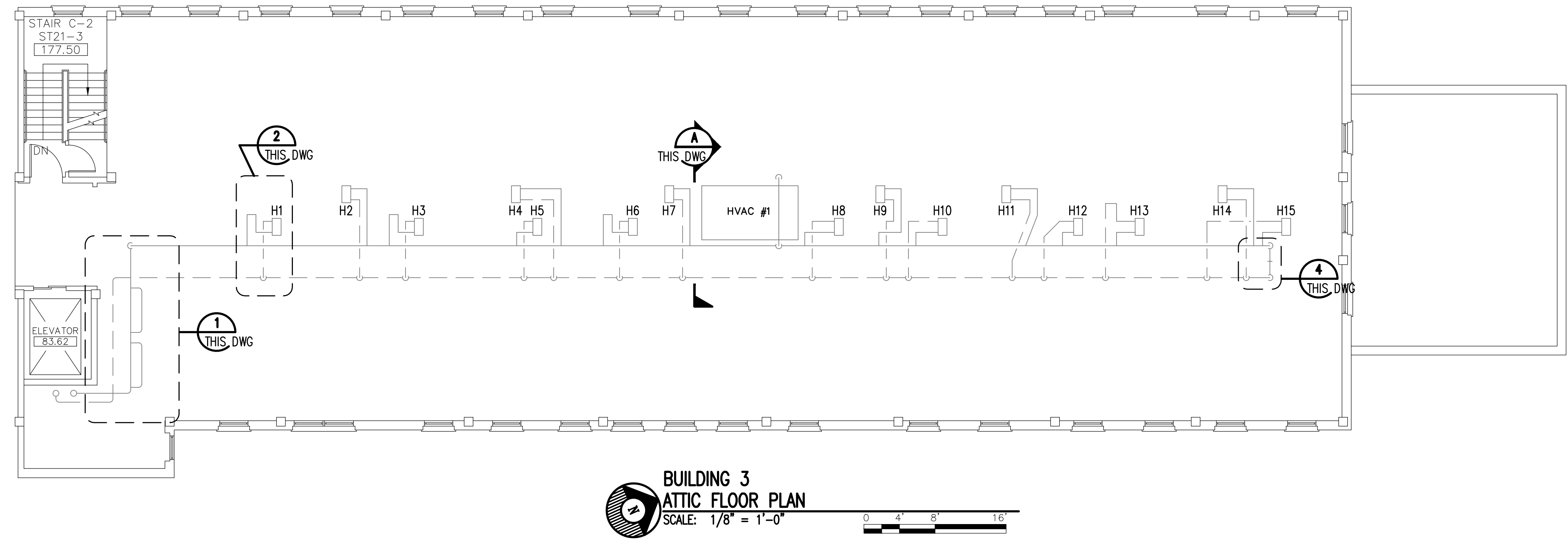
E
one-half inch = one foot

F
three-eighths inch = one foot

G
one-quarter inch = one foot

H
one-eighth inch = one foot

DRAWING NOTES:
A. NO WORK REQUIRED THIS AREA. SHEET INCLUDED FOR COMPLETENESS OF RECORD DRAWINGS.

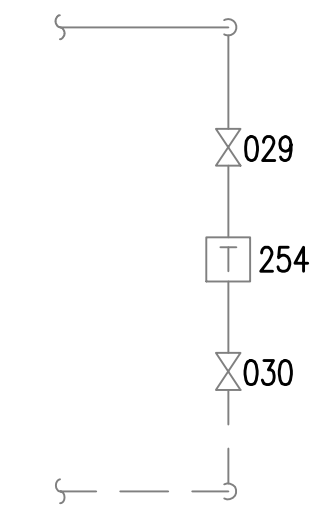


DETAIL 1
SCALE: NONE

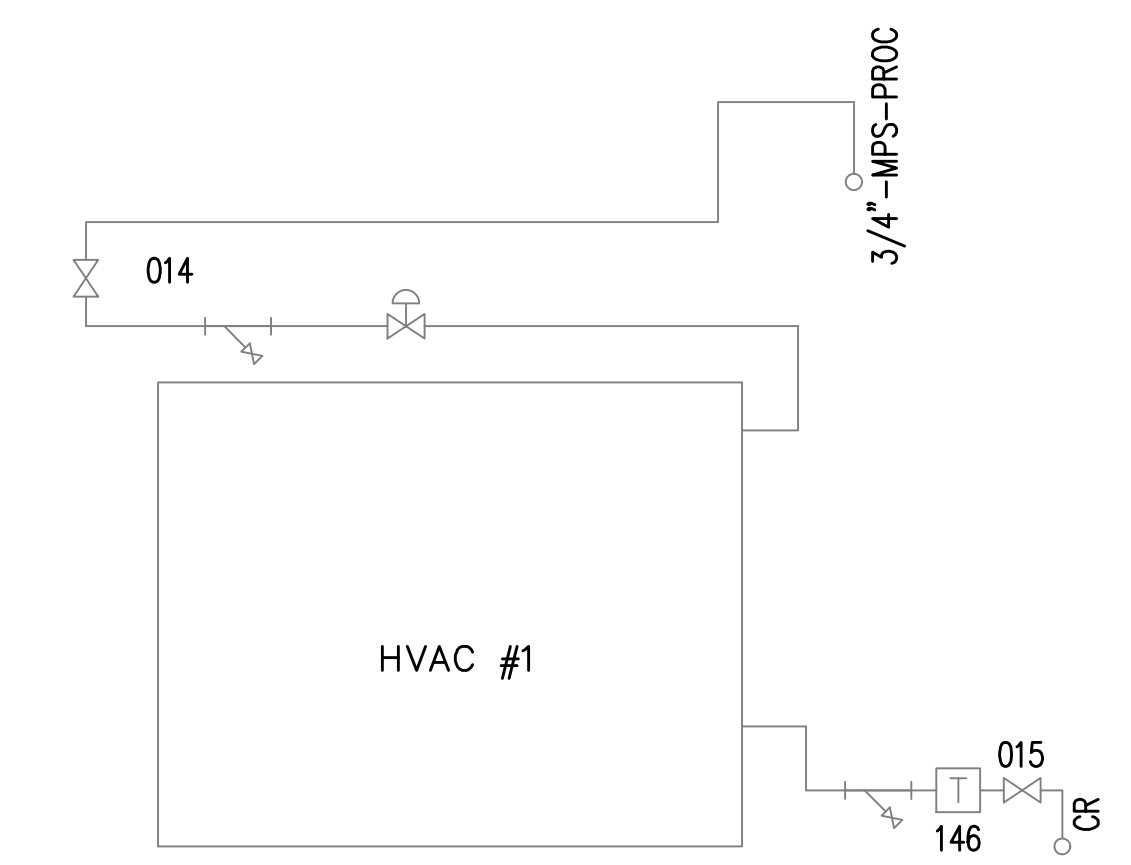
VALVE AND TRAP SCHEDULE

	H1	H2	H3	H4	H5	H6	H7	H8	H9	H10	H11	H12	H13	H14	H15
S	03250	007	005	009	003	U03A007	011	021	017	019	022	024	027	032	033
C	03249	306	004	008	002	U03A008	010	020	016	018	023	025	026	031	028
T	A238	A240	A239	A242	A241	A244	A243	A247	A249	A248	A250	A251	A252	A255	A253

DETAIL 2
SCALE: NONE



DETAIL 4
SCALE: NONE



SECTION A
SCALE: NONE

Revisions Date	 APPLIED ENGINEERING SOLUTIONS 440 Martin Luther King, Jr. Blvd., Suite 401 Macon, Georgia 31201 (478) 314-1270 www.aes-pe.com		KEY PLAN SCALE: NONE		Drawing Title	Project Title	Date
					ATTIC FLOOR PLAN AND DETAILS	STEAM AND CONDENSATE PIPING SYSTEM STUDY	JUNE 22, 2012
					FINAL SUBMITTAL	Building Number 3 Checked PJC Drawn JSW	Project No. 557-10-109
					Location	Drawing No.	
					CARL VINSON VA MEDICAL CENTER DUBLIN, GEORGIA	03-G-301	
					Dwg. 23 Of 87		

VA FORM 08-6231A, MAR 1984

U.S. GOVERNMENT PRINTING OFFICE: 1984-440-467

Veterans Administration