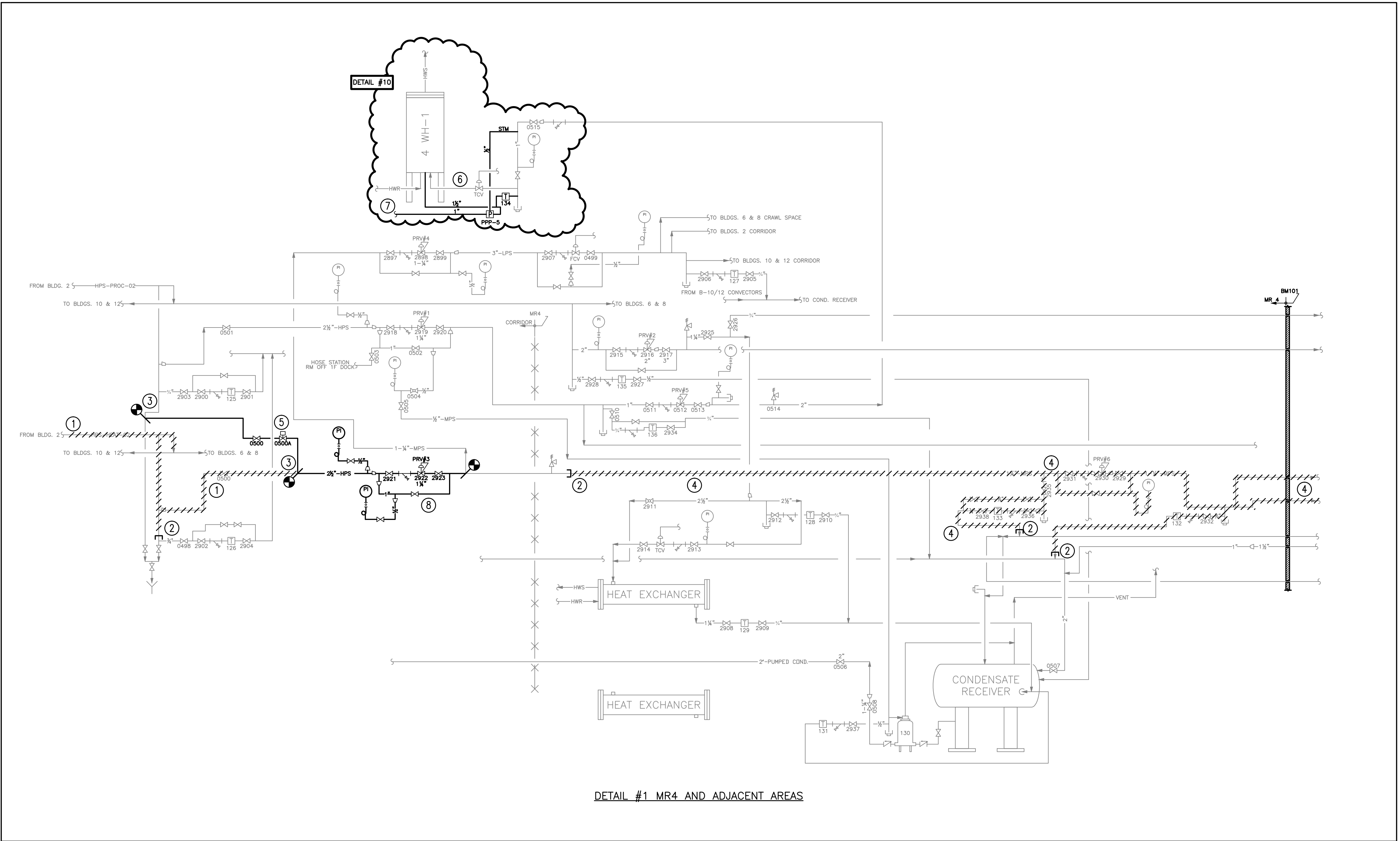
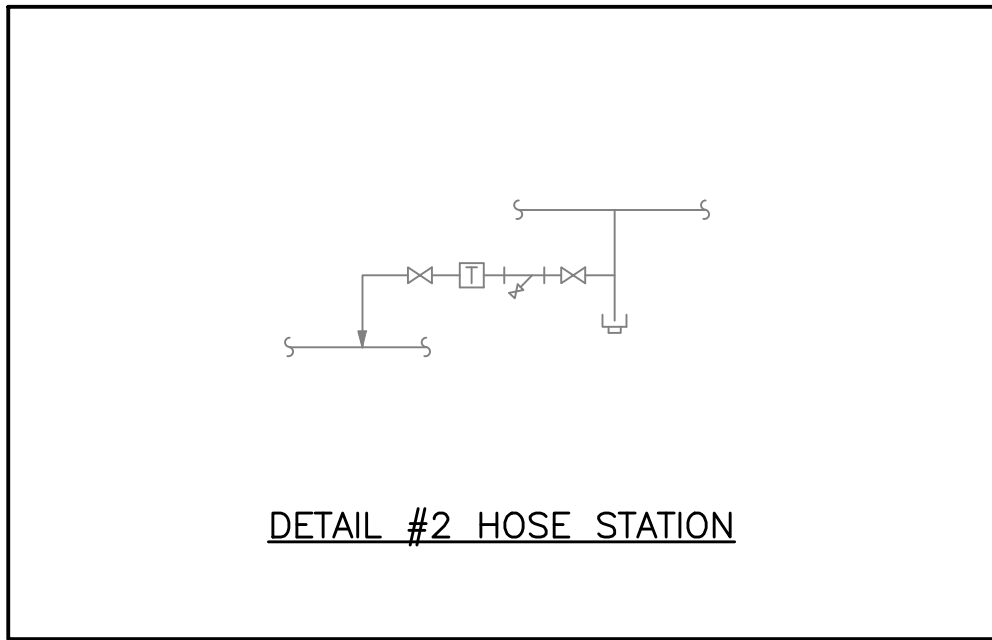


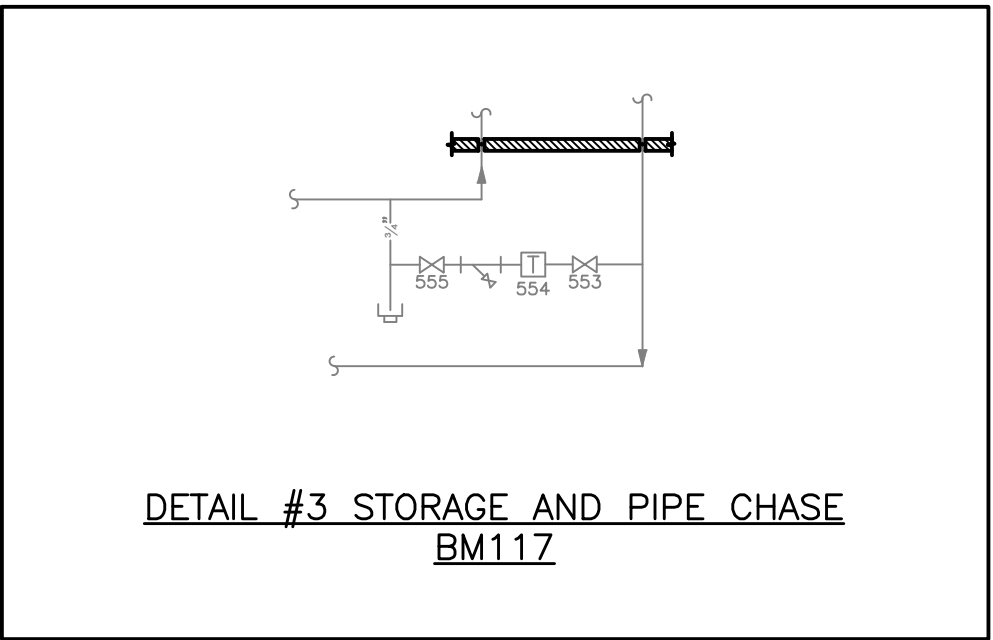
three inches = one foot
one and one-half inches = one foot
one inch = one foot
three-quarters inch = one foot
one-half inch = one foot
three-eighths inch = one foot
one-quarter inch = one foot
one-eighth inch = one foot



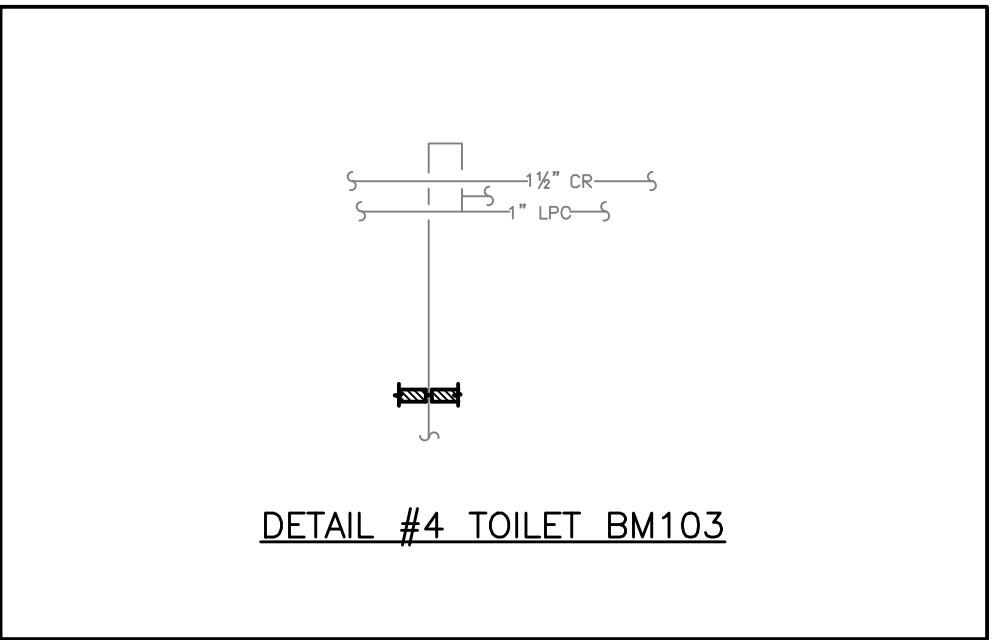
DETAIL #1 MR4 AND ADJACENT AREAS



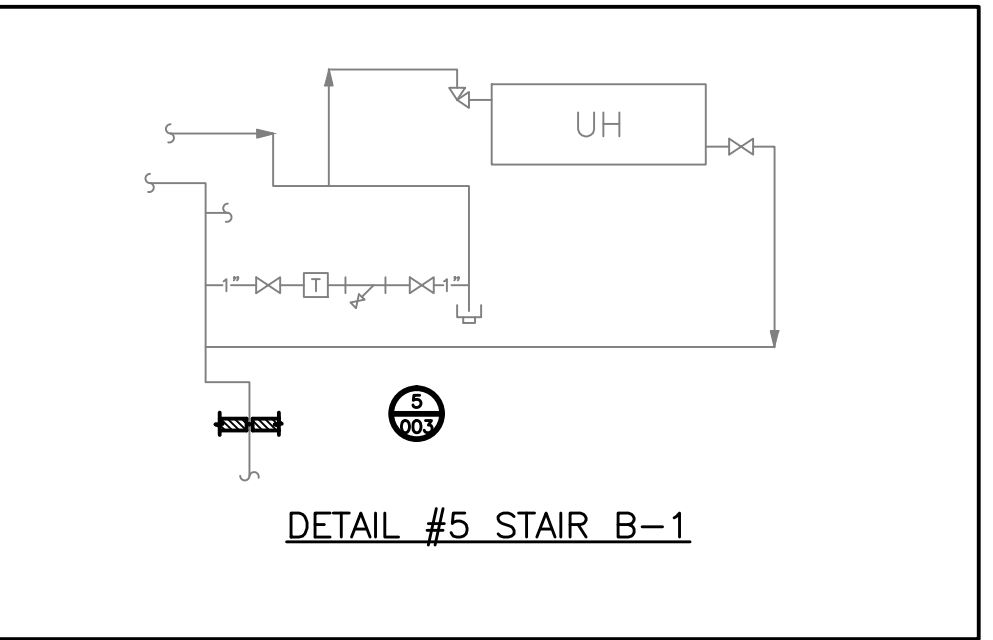
DETAIL #2 HOSE STATION



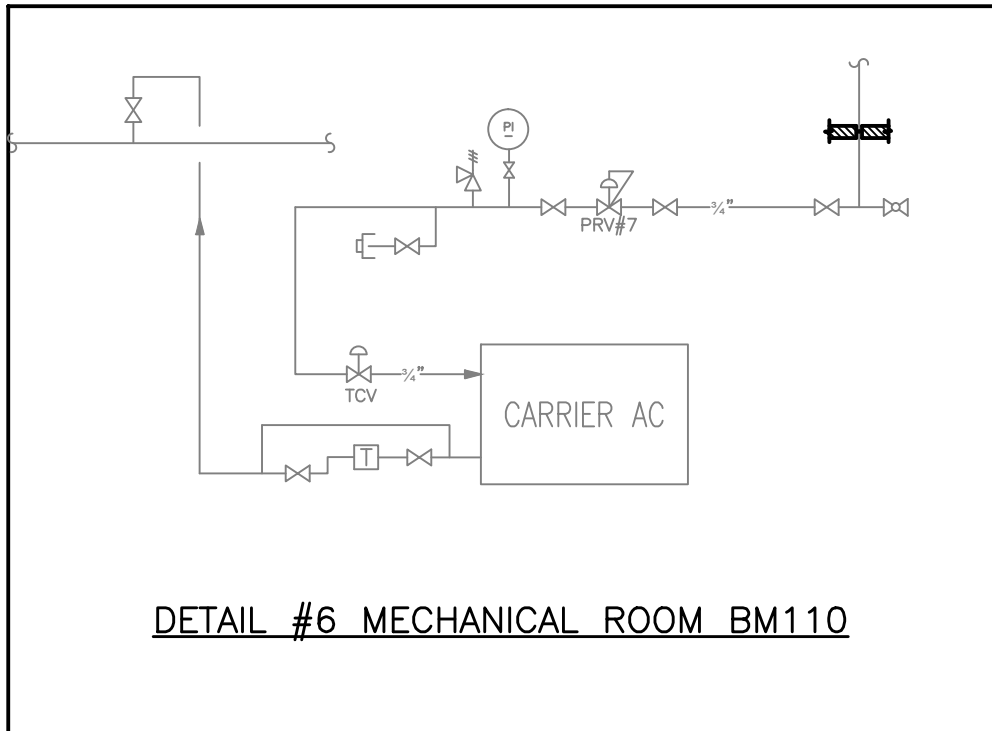
DETAIL #3 STORAGE AND PIPE CHASE BM117



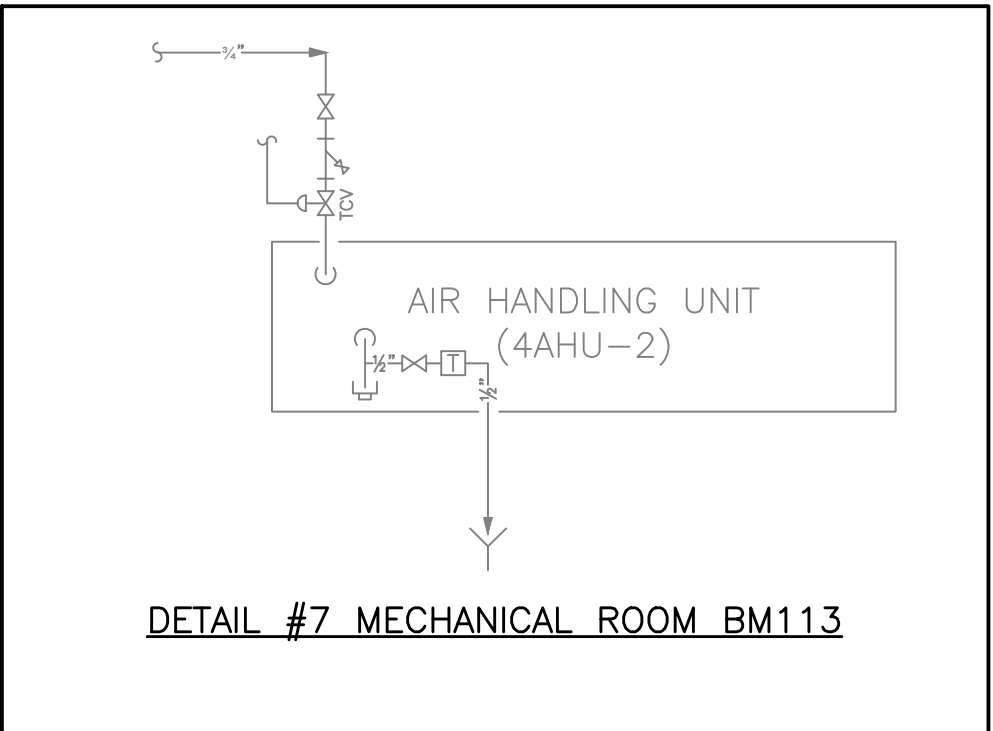
DETAIL #4 TOILET BM103



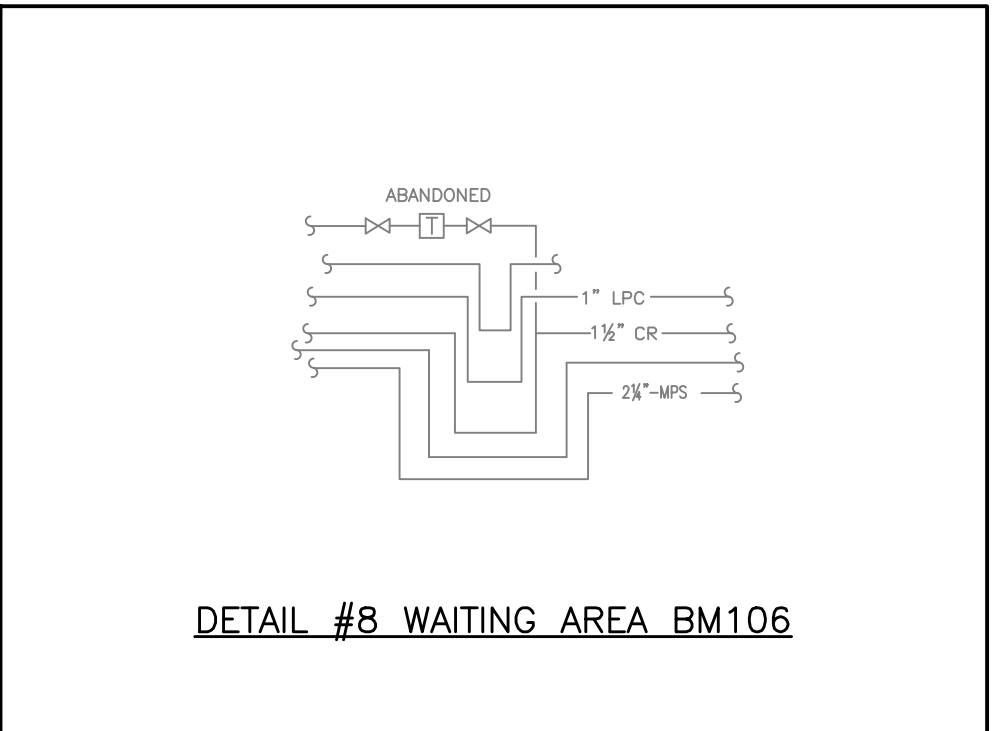
DETAIL #5 STAIR B-1



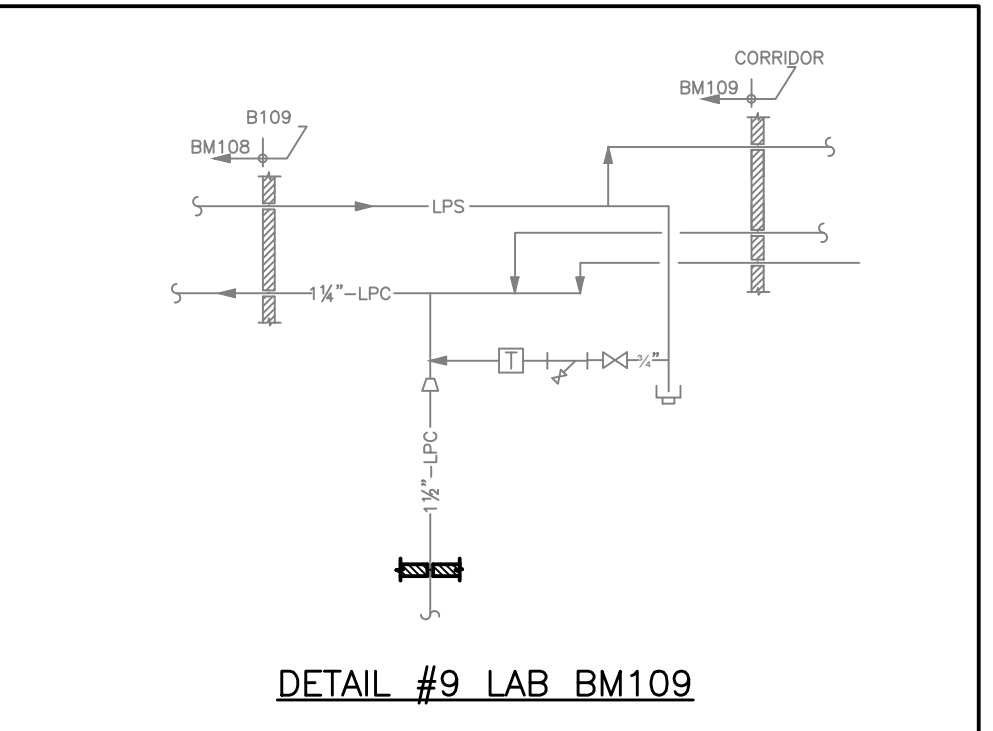
DETAIL #6 MECHANICAL ROOM BM110



DETAIL #7 MECHANICAL ROOM BM113



DETAIL #8 WAITING AREA BM106



DETAIL #9 LAB BM109

PROCESS FLOW DIAGRAMS AND DETAILS
SCALE: NONE

NOTE: FOR PHYSICAL LOCATIONS OF DETAILS, SEE DRAWING 04-G-001.

- NOTES:**
(THIS SHEET ONLY)
- 1 REMOVE AND HAUL AWAY IN ITS ENTIRETY HPS HEATING STEAM PIPING. TURN OVER TO VA COTR ALL VALVES AND STEAM TRAP TAGS THAT ARE NOT REUSED.
 - 2 PERMANENTLY CAP BRANCH LINE AS CLOSE TO MAIN AS POSSIBLE.
 - 3 PROVIDE NEW CROSS OVER PIPE AND VALVE TO PROVIDE NEW HPS-PROC STEAM TO PRV#3, 2922. REUSE INDICATED VALVE TAG.
 - 4 REMOVE INDICATED MPS HEATING PIPING TO EXTENT POSSIBLE IN MECHANICAL ROOM.
 - 5 PROVIDE AUTOMATIC ELECTRIC ACTUATED NORMALLY CLOSED 2½" VALVE AND CONNECT TO TRIDIUM CONTROL SYSTEM WHEN OUTSIDE AIR TEMPERATURE IS BELOW 55°F FOR 5 MINUTES OR LONGER. NEW VALVE TAG 0500A.
 - 6 PROVIDE INDICATED PUMP TRAP PPP-5 FOR 4 WH-1 AS SCHEDULED AND DETAILED. SEE FLOOR PLAN 01-G-002.
 - 7 1" TO CONDENSATE PUMP RECEIVER.
 - 8 REPLACE EXISTING HEATING ONLY PRESSURE REDUCING STATION AS SCHEDULED AND DETAILED.

		 APPLIED ENGINEERING SOLUTIONS 440 Martin Luther King, Jr. Blvd., Suite 401 Macon, Georgia 31201 (478) 314-1270 www.aes-pe.com	 KEY PLAN SCALE: NONE		Drawing Title	Project Title	Date	Veterans Administration		
					PROCESS FLOW DIAGRAMS AND DETAILS	STEAM AND CONDENSATE PIPING SYSTEM STUDY	JUNE 22, 2012			
						Building Number 4	Checked PJC		Drawn JSW	Project No. 557-10-109
					FINAL SUBMITTAL	Location CARL VINSON VA MEDICAL CENTER DUBLIN, GEORGIA			DRAWING NO. 04-G-003	
									Dwg. 28 of 87	
Revisions	Date									