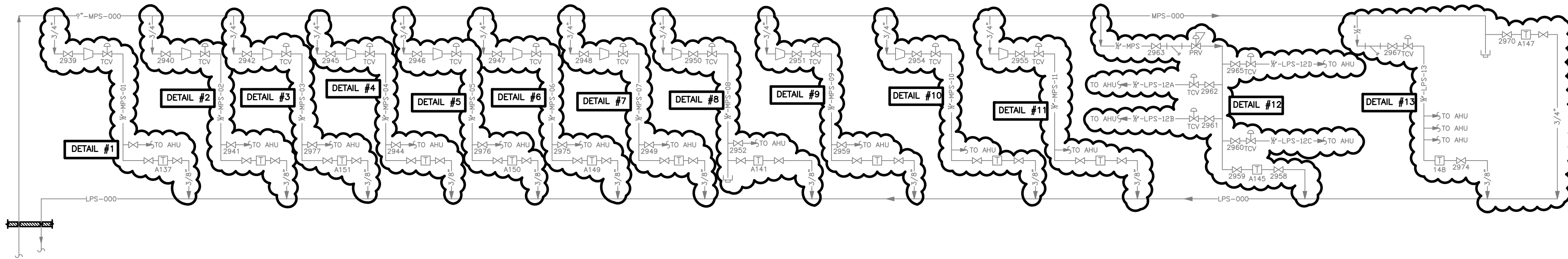
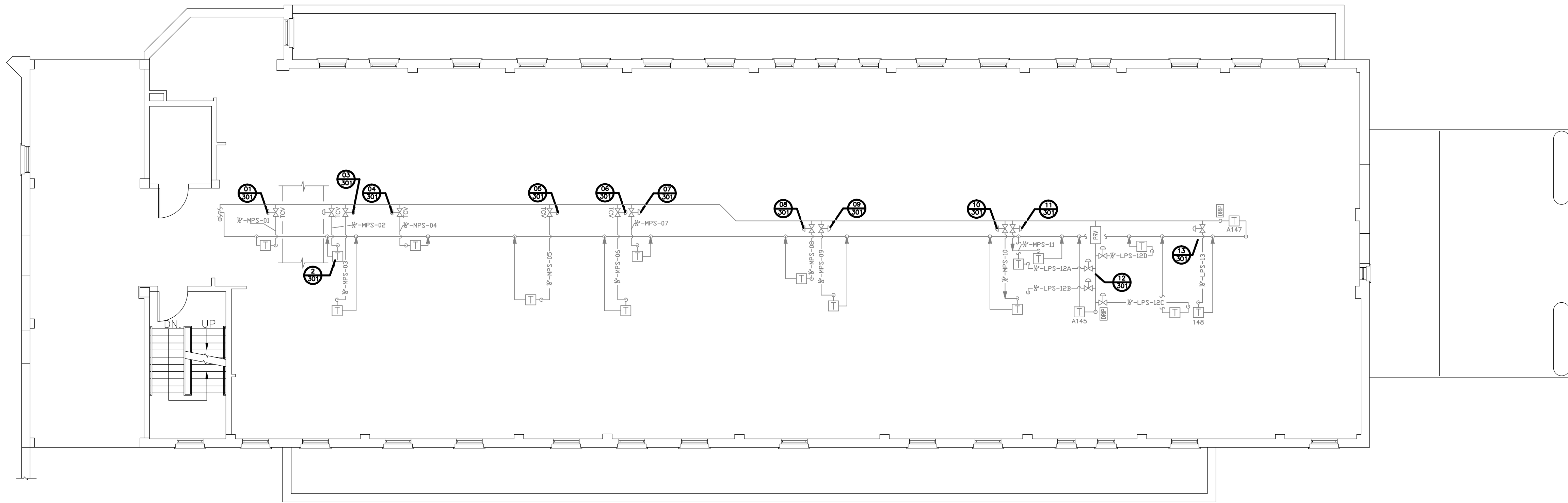


three inches = one foot
one and one-half inches = one foot
one inch = one foot
three-quarters inch = one foot
one-half inch = one foot
three-eighths inch = one foot
one-quarter inch = one foot
one-eighth inch = one foot

DRAWING NOTES:
A. NO WORK REQUIRED THIS AREA. SHEET INCLUDED FOR COMPLETENESS OF RECORD DRAWINGS.



PROCESS FLOW DIAGRAM AND DETAILS
SCALE: NONE

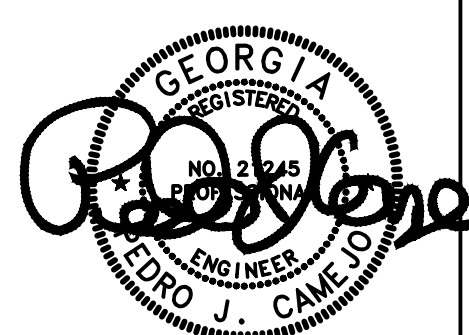
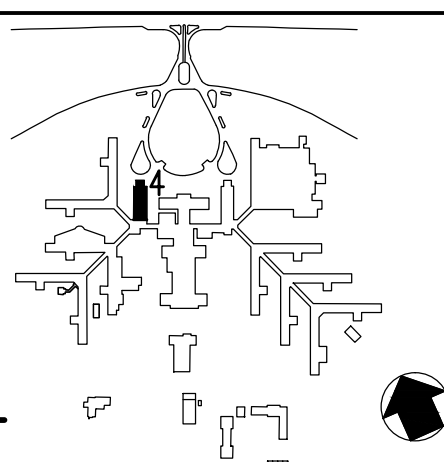


ATTIC PLAN
SCALE: 1/8" = 1'-0"

Revisions	Date

AES
APPLIED ENGINEERING
SOLUTIONS
440 Martin Luther King, Jr. Blvd., Suite 401
Macon, Georgia 31201
(478) 314-1270
www.aes-pe.com

KEY PLAN
SCALE: NONE



Drawing Title
ATTIC FLOOR PLAN PROCESS FLOW DIAGRAM AND DETAILS
FINAL SUBMITTAL

Project Title
STEAM AND CONDENSATE PIPING SYSTEM STUDY
Building Number
4
Checked
PJC
Drawn
JSW
Location
CARL VINSON VA MEDICAL CENTER DUBLIN, GEORGIA

Date
JUNE 22, 2012
Project No.
557-10-109
Drawing No.
04-G-301
Dwg. 31 Of 87

Veterans
Administration