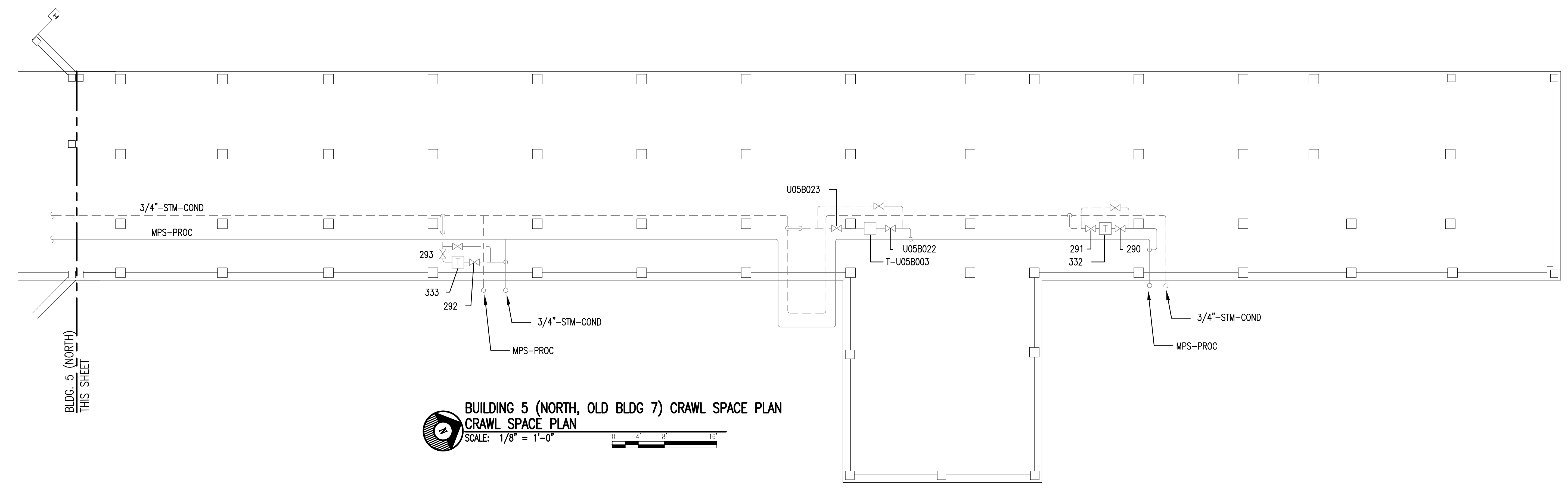


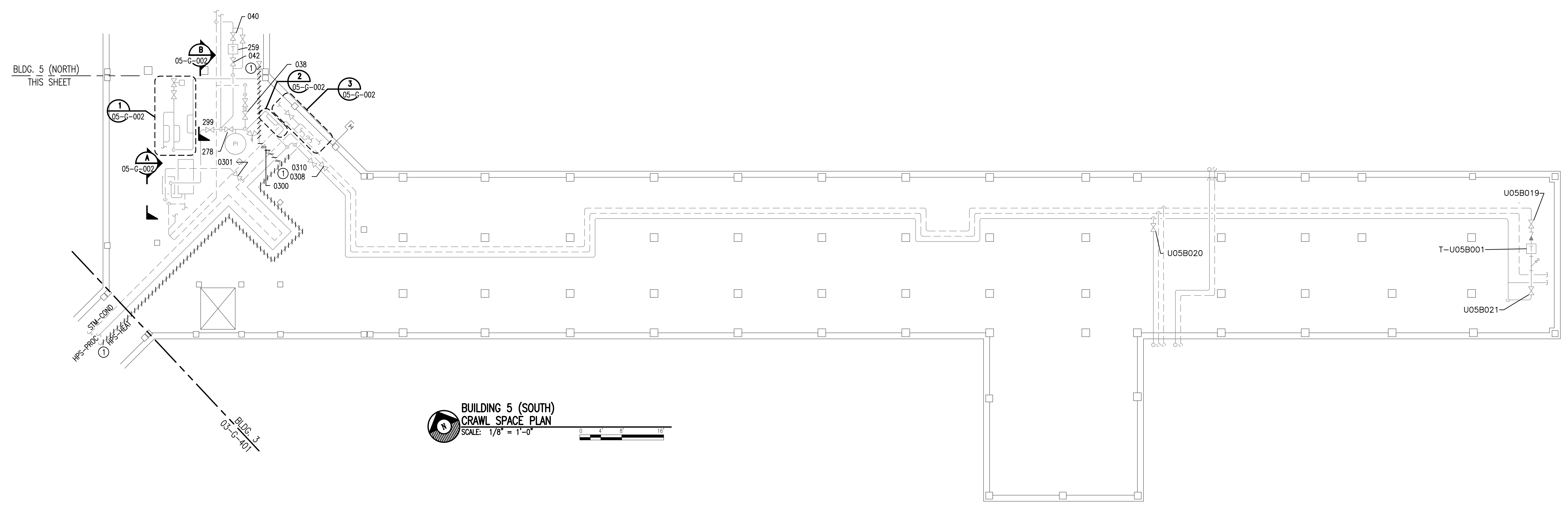
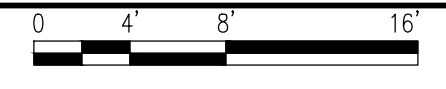
three inches = one foot
one and one-half inches = one foot
one inch = one foot
three-quarters inch = one foot
one-half inch = one foot
three-eighths inch = one foot
one-quarter inch = one foot
one-eighth inch = one foot

NOTES:
(THIS SHEET ONLY)

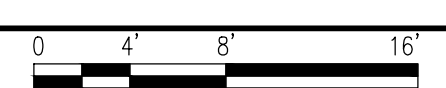
① REMOVE AND HAUL AWAY IN ITS ENTIRETY HPS HEATING STEAM PIPING. TURN OVER TO VA COTR ALL VALVES AND STEAM TRAP TAGS THAT ARE NOT REUSED.



BUILDING 5 (NORTH, OLD BLDG 7) CRAWL SPACE PLAN
SCALE: 1/8" = 1'-0"

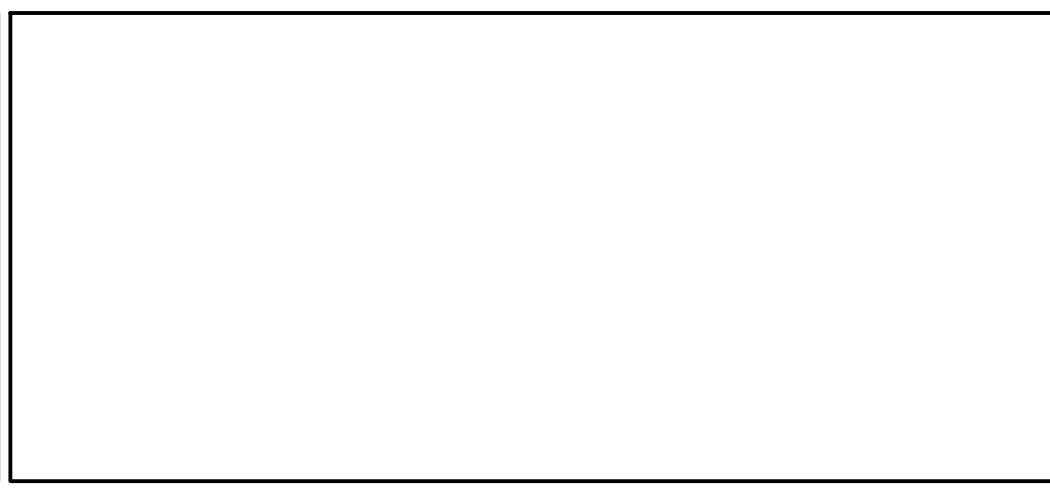


BUILDING 5 (SOUTH) CRAWL SPACE PLAN
SCALE: 1/8" = 1'-0"



Revisions	Date

AES
APPLIED ENGINEERING SOLUTIONS
440 Martin Luther King, Jr. Blvd., Suite 401
Macon, Georgia 31201
(478) 314-1270
www.aes-pe.com



KEY PLAN
SCALE: NONE

Professional Engineer Seal
GEORGIA
Professional Engineer
EDRO J. CANELO
No. 12345
Exp. 12/31/2015

Drawing Title
NORTH AND SOUTH CRAWL SPACE PLANS
FINAL SUBMITTAL

Project Title
STEAM AND CONDENSATE PIPING SYSTEM STUDY

Building Number 5	Checked PJC	Drawn JSW
Location CARL VINSON VA MEDICAL CENTER DUBLIN, GEORGIA		

Date
JUNE 22, 2012

Project No.
557-10-109

Drawing No.
05-G-001

Dwg. 32 Of 87

Veterans Administration