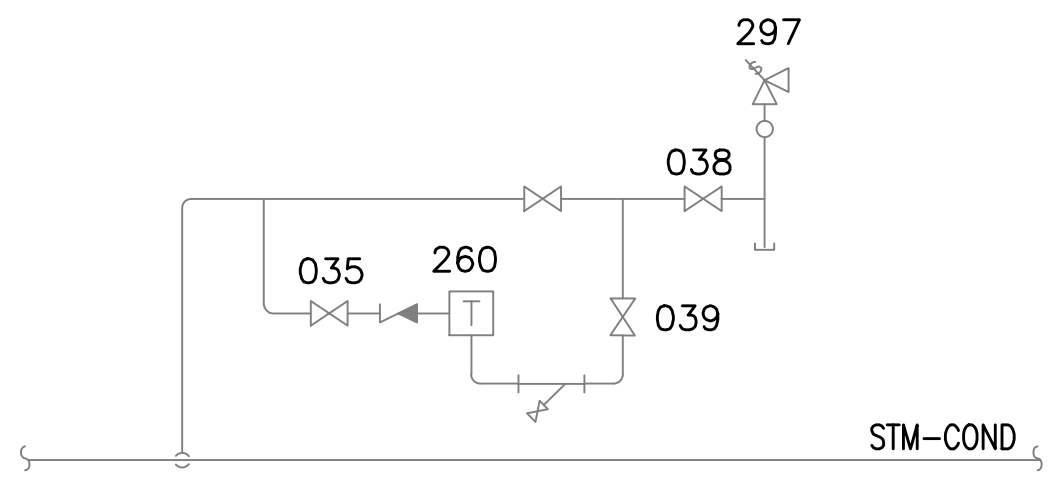
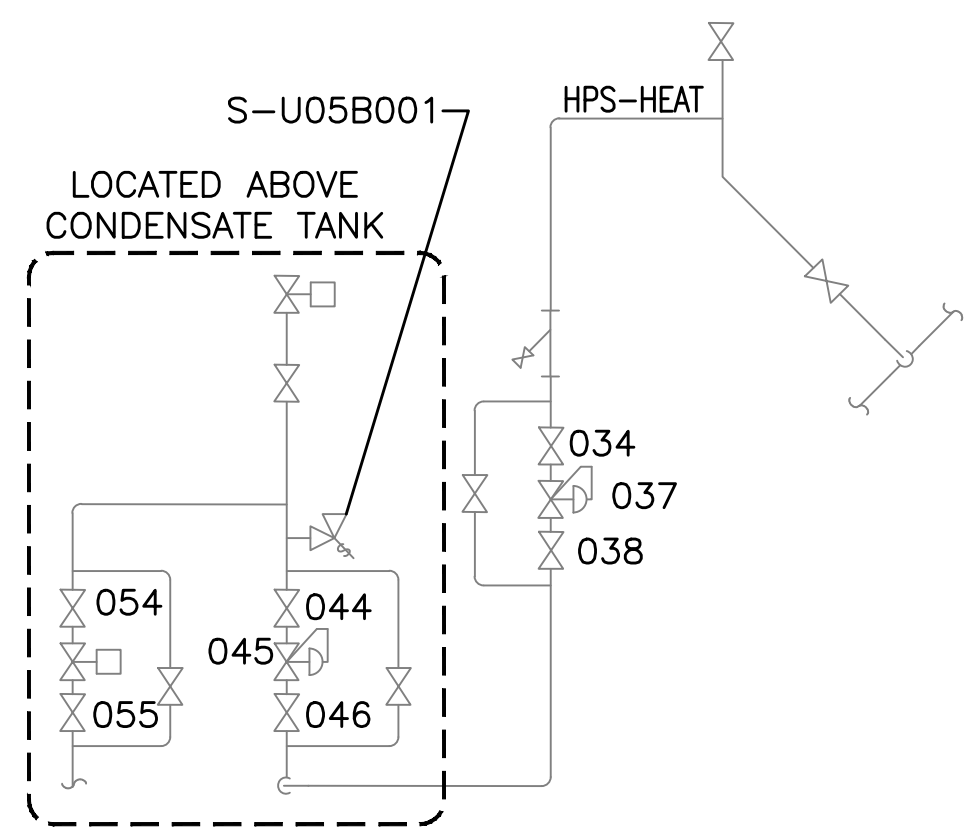


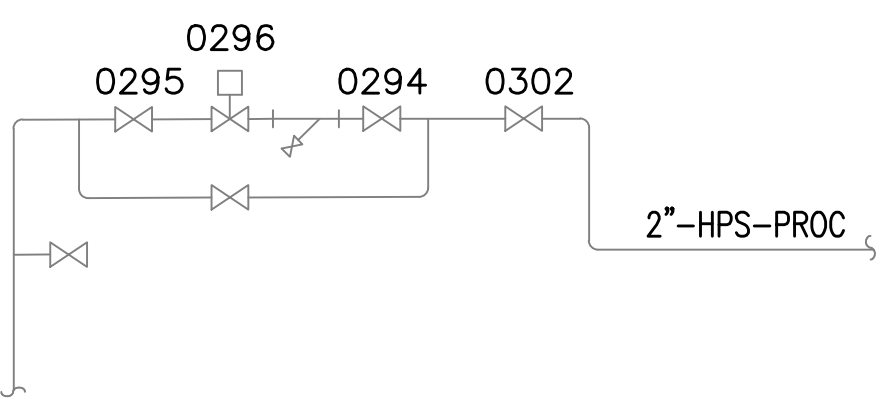
three inches = one foot  
one and one-half inches = one foot  
one inch = one foot  
three-quarters inch = one foot  
one-half inch = one foot  
three-eighths inch = one foot  
one-quarter inch = one foot  
one-eighth inch = one foot



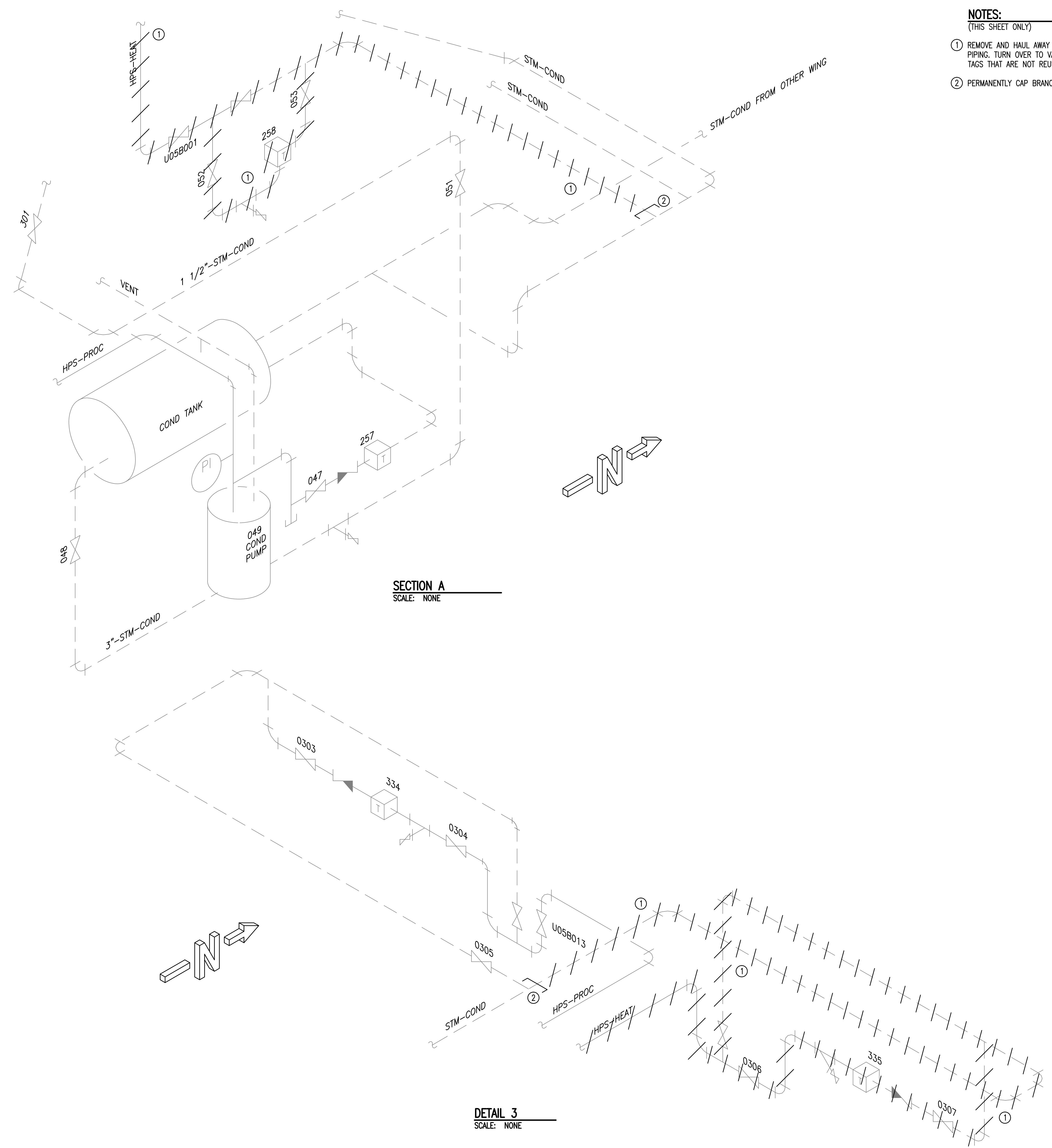
SECTION B  
SCALE: NONE



DETAIL 1  
SCALE: NONE




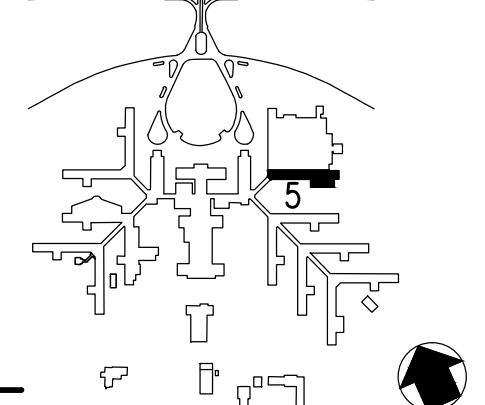

DETAIL 2  
SCALE: NONE



SECTION A  
SCALE: NONE

DETAIL 3  
SCALE: NONE

- NOTES:**  
(THIS SHEET ONLY)
- ① REMOVE AND HAUL AWAY IN ITS ENTIRETY HPS HEATING STEAM PIPING. TURN OVER TO VA COTR ALL VALVES AND STEAM TRAP TAGS THAT ARE NOT REUSED.
  - ② PERMANENTLY CAP BRANCH LINE AS CLOSE TO MAIN AS POSSIBLE.

<div>Revisions</div> <table border="1"><thead><tr><th>No.</th><th>Description</th><th>Date</th></tr></thead><tbody><tr><td> </td><td> </td><td> </td></tr><tr><td> </td><td> </td><td> </td></tr><tr><td> </td><td> </td><td> </td></tr></tbody></table>	No.	Description	Date										<div> <b>APPLIED ENGINEERING SOLUTIONS</b> 440 Martin Luther King, Jr. Blvd., Suite 401 Macon, Georgia 31201 (478) 314-1270 www.aes-pe.com</div>	<div> <b>KEY PLAN</b> SCALE: NONE</div>	<div></div>	Drawing Title <b>SECTIONS AND DETAILS</b>		Project Title <b>STEAM AND CONDENSATE PIPING SYSTEM STUDY</b>		Date JUNE 22, 2012	
	No.	Description	Date																		
Building Number <b>5</b>		Checked <b>PJC</b>	Drawn <b>JSW</b>	Project No. 557-10-109																	
Location CARL VINSON VA MEDICAL CENTER DUBLIN, GEORGIA		Drawing No. <b>05-G-002</b>		Dwg. 33 Of 87																	
FINAL SUBMITTAL																					