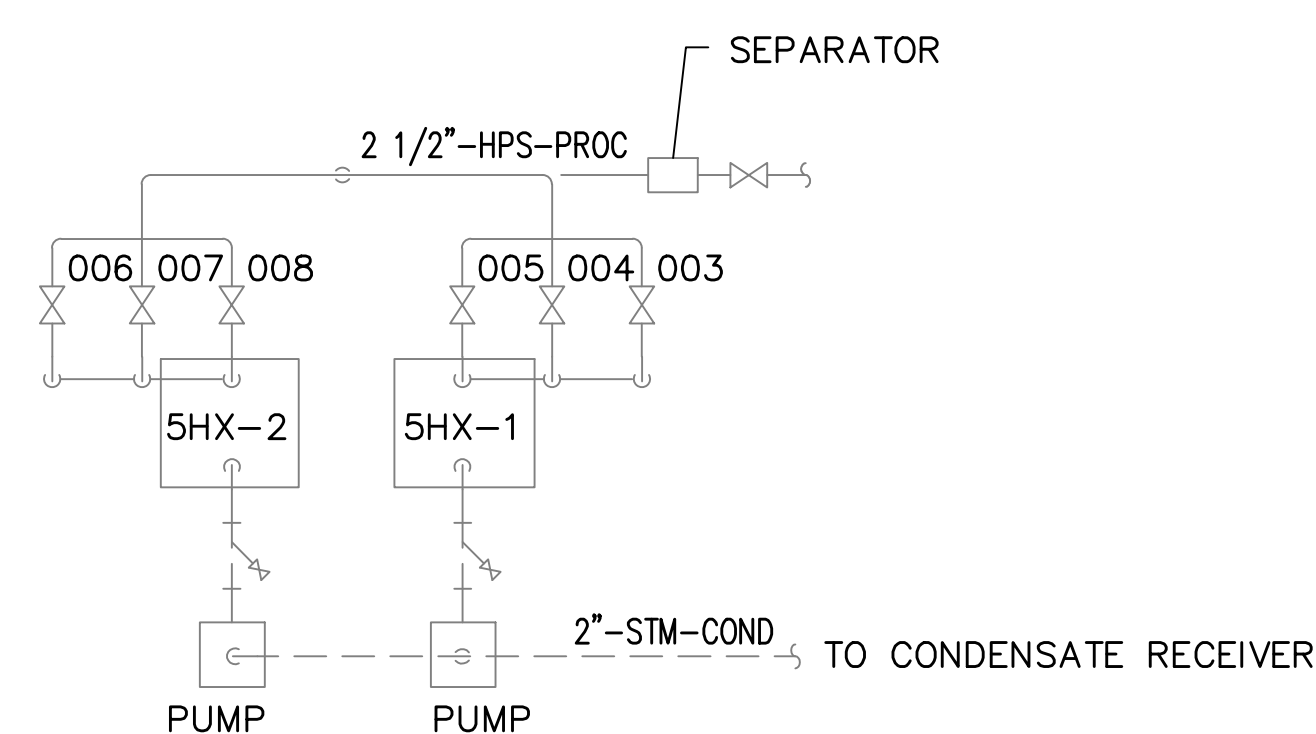
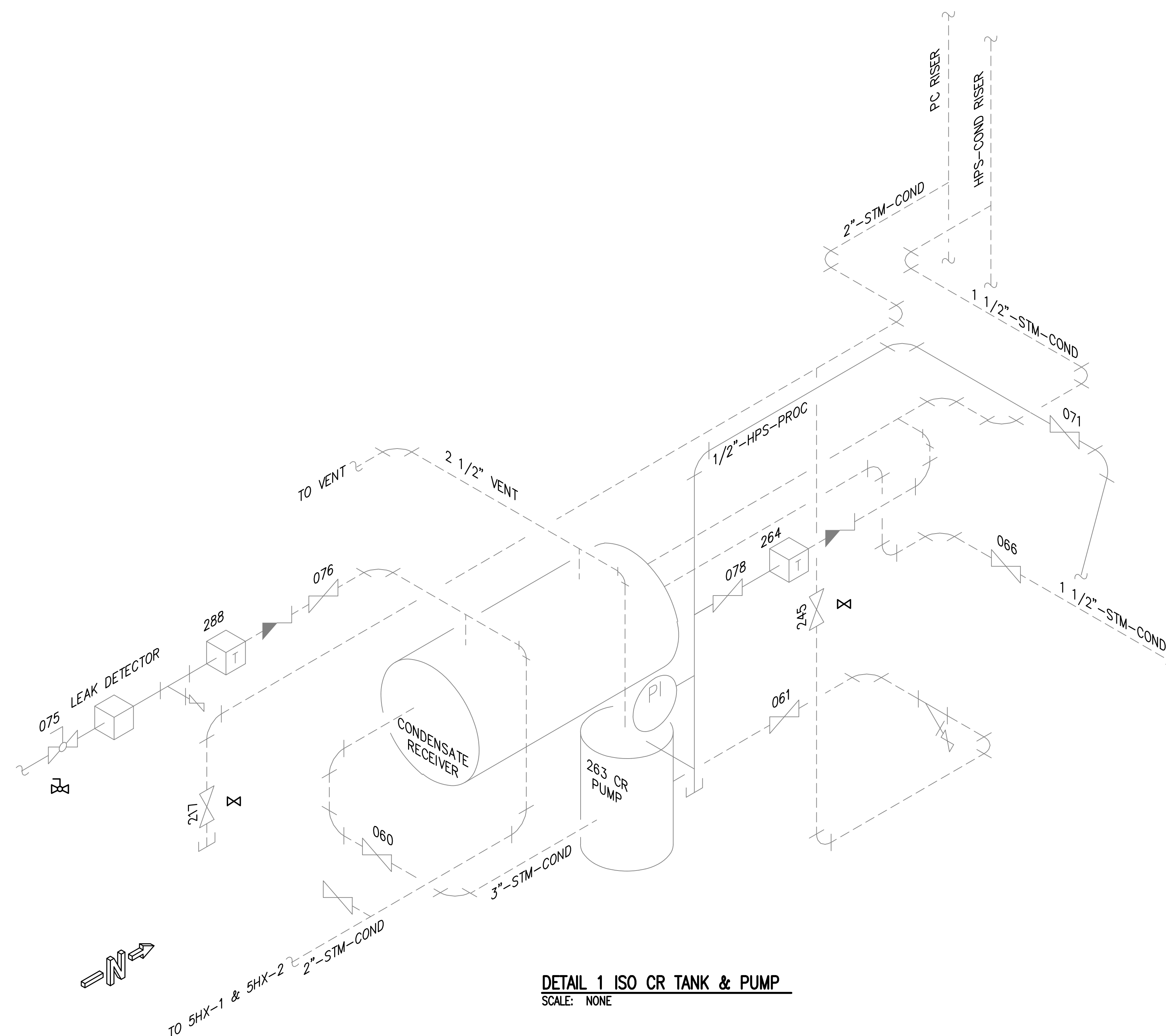


**DETAIL 1**  
**SCALE: NONE**




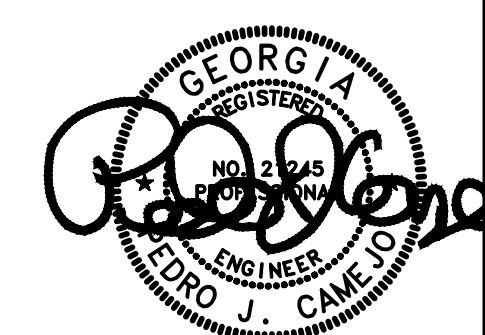
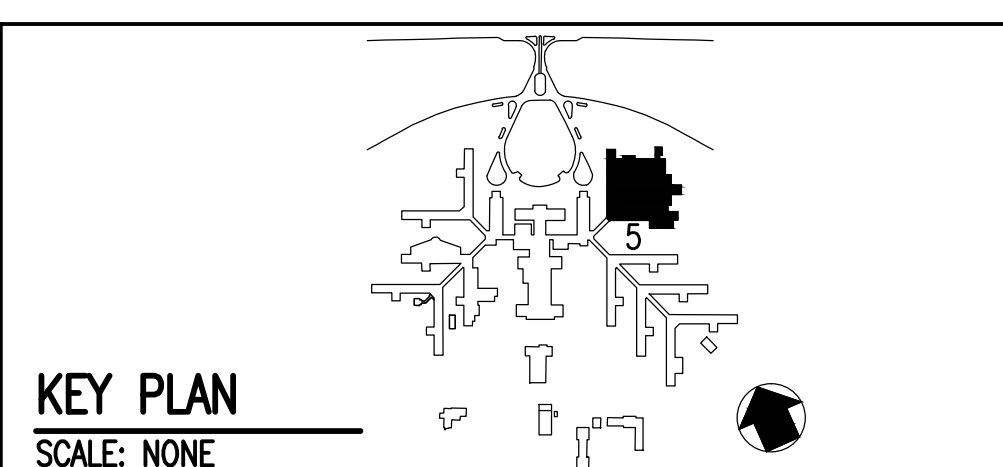
**SECTION A**  
**SCALE: NONE**



**DETAIL 1 ISO CR TANK & PUMP**  
SCALE: NONE

[illegible]

  
APPLIED ENGINEERING  
SOLUTIONS  
440 Martin Luther King, Jr. Blvd., Suite 401  
Macon, Georgia 31201  
(478) 314-1270  
[www.aes-pe.com](http://www.aes-pe.com)



Drawing Title  <div style="text-align: center; font-size: 24pt; font-weight: bold;">DETAILS</div>	Project Title  <div style="text-align: center; font-size: 24pt; font-weight: bold;">STEAM AND CONDENSATE PIPING SYSTEM STUDY</div>			Date <div style="text-align: center;">JUNE 22, 2012</div>
				Project No. <div style="text-align: center;">557-10-109</div>
	Building Number <div style="text-align: center; font-size: 24pt; font-weight: bold;">5</div>	Checked <div style="text-align: center; font-size: 24pt; font-weight: bold;">PJC</div>	Drawn <div style="text-align: center; font-size: 24pt; font-weight: bold;">JSW</div>	DRAWING NO. <div style="text-align: center; font-size: 24pt; font-weight: bold;">05-G-102</div>
<div style="text-align: center; font-size: 24pt; font-weight: bold;">FINAL SUBMITTAL</div>	Location CARL VINSON VA MEDICAL CENTER DUBLIN, GEORGIA			Dwg. 35 of 87