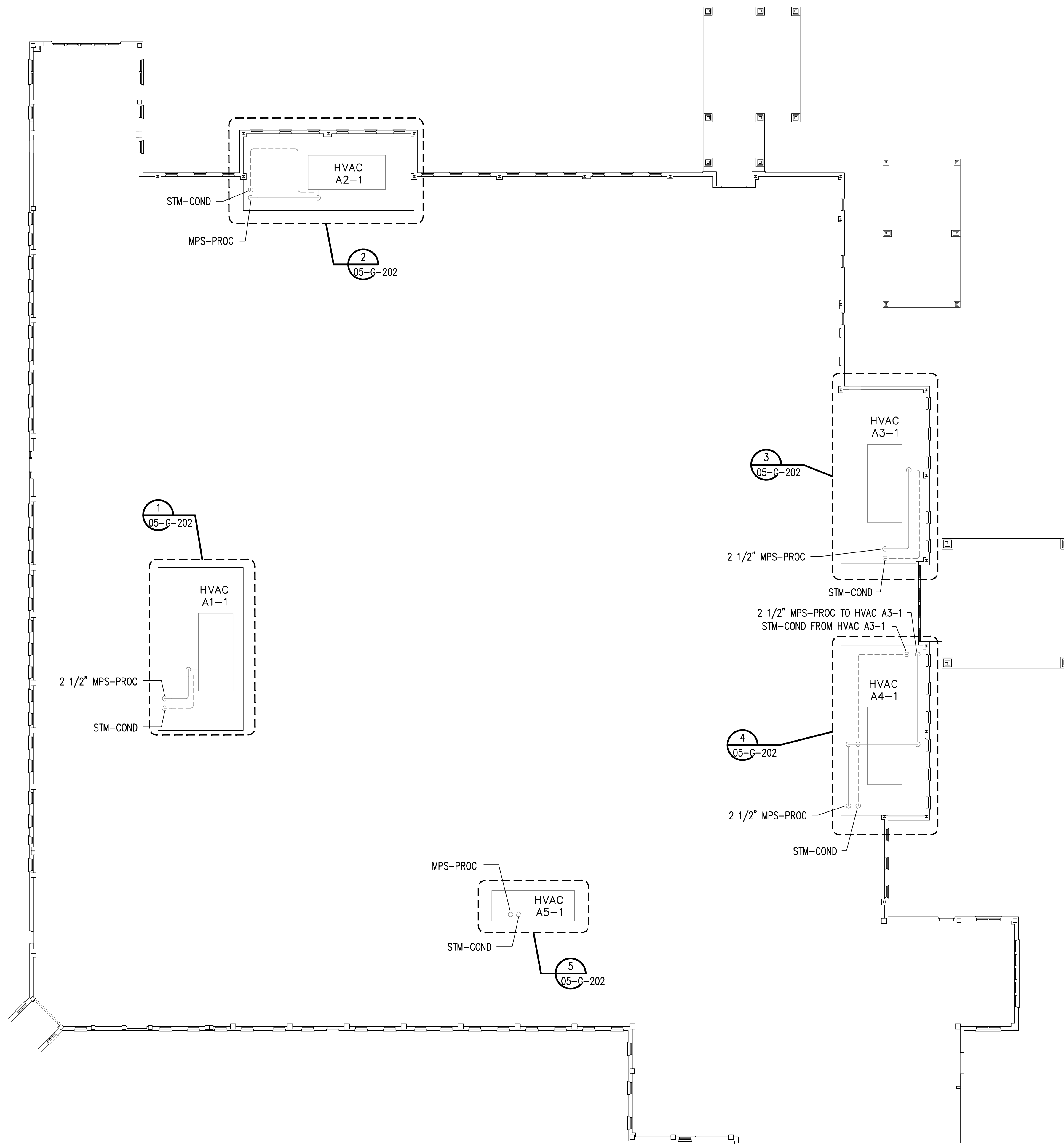


three-eighths inch = one foot
one-quarter inch = one foot
one-eighth inch = one foot
one-half inch = one foot
three-quarters inch = one foot
one inch = one foot
one and one-half inches = one foot
three inches = one foot

DRAWING NOTES:
A. NO WORK REQUIRED THIS AREA. SHEET INCLUDED FOR COMPLETENESS OF RECORD DRAWINGS.

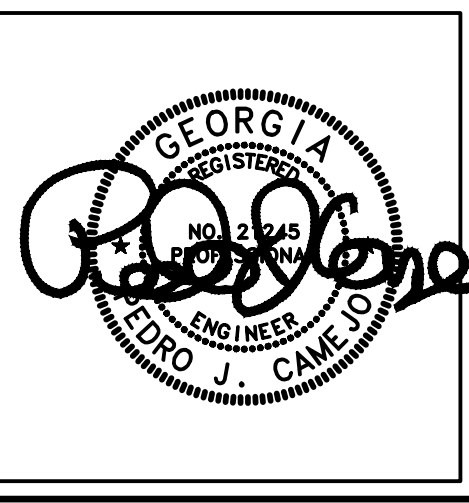


**BUILDING 5
ROOF PLAN**
SCALE: 1/16" = 1'-0"

| Revisions | Date |
|-----------|------|
| | |
| | |
| | |
| | |
| | |
| | |
| | |
| | |
| | |
| | |

AES
APPLIED ENGINEERING
SOLUTIONS
440 Martin Luther King, Jr. Blvd., Suite 401
Macon, Georgia 31201
(478) 314-1270
www.aes-pe.com

KEY PLAN
SCALE: NONE



Drawing Title
ROOF PLAN

FINAL SUBMITTAL

Project Title
**STEAM AND CONDENSATE
PIPING SYSTEM STUDY**

| | | |
|---|-----------------------|---------------------|
| Building Number 5 | Checked PJC | Drawn JSW |
| Location CARL VINSON VA MEDICAL CENTER DUBLIN, GEORGIA | | |

Date
JUNE 22, 2012

Project No.
557-10-109

DRAWING NO.
05-G-201

Dwg. 36 Of 87

Veterans
Administration