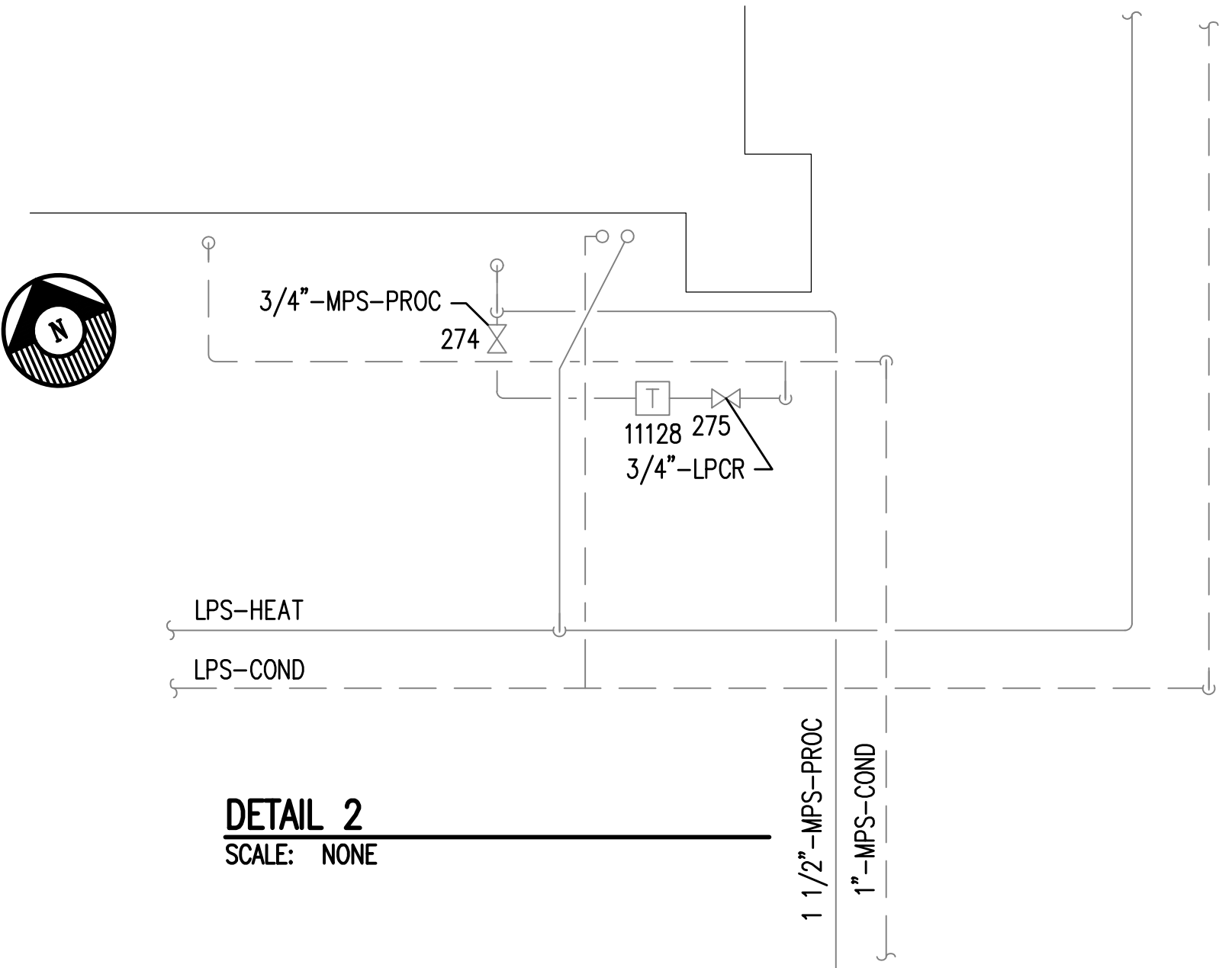
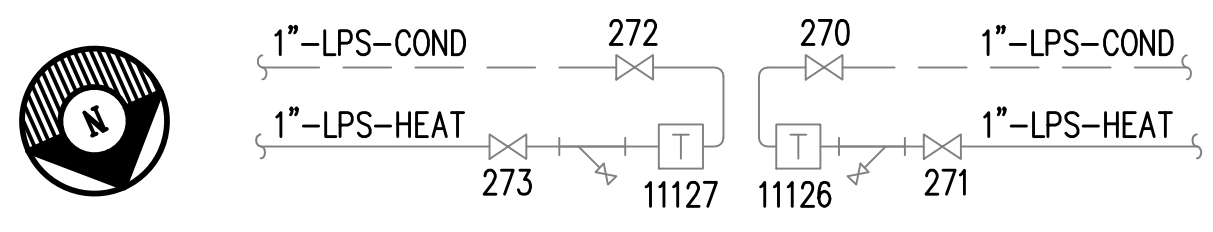


three inches = one foot  
one and one-half inches = one foot  
one inch = one foot  
three-quarters inch = one foot  
three-eighths inch = one foot  
one-half inch = one foot  
three-eighths inch = one foot  
one-quarter inch = one foot  
one-eighth inch = one foot

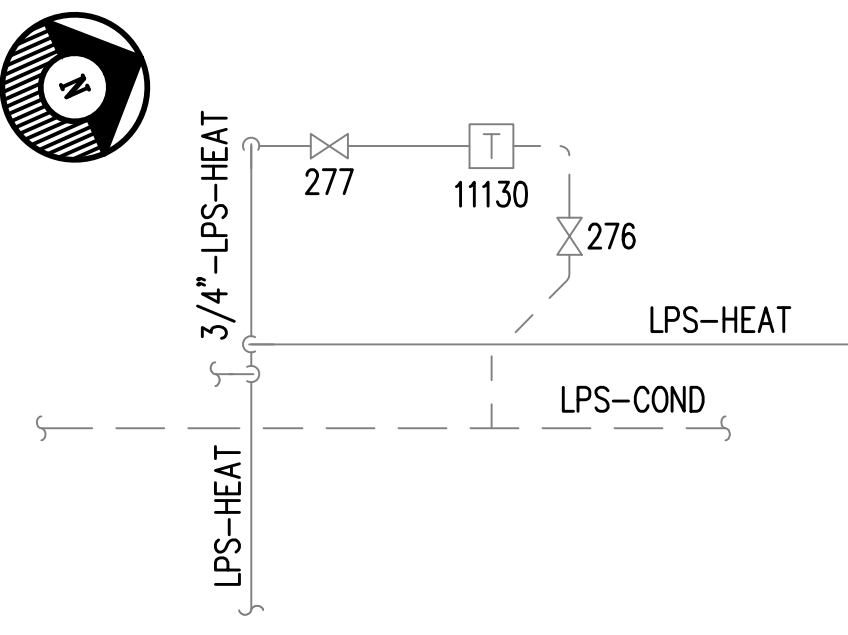
NOTES:  
(THIS SHEET ONLY)  
① PROVIDE NEW PUMP TRAP. SEE DETAILS AND FLOOR PLAN ON SHEET 06-G-002.



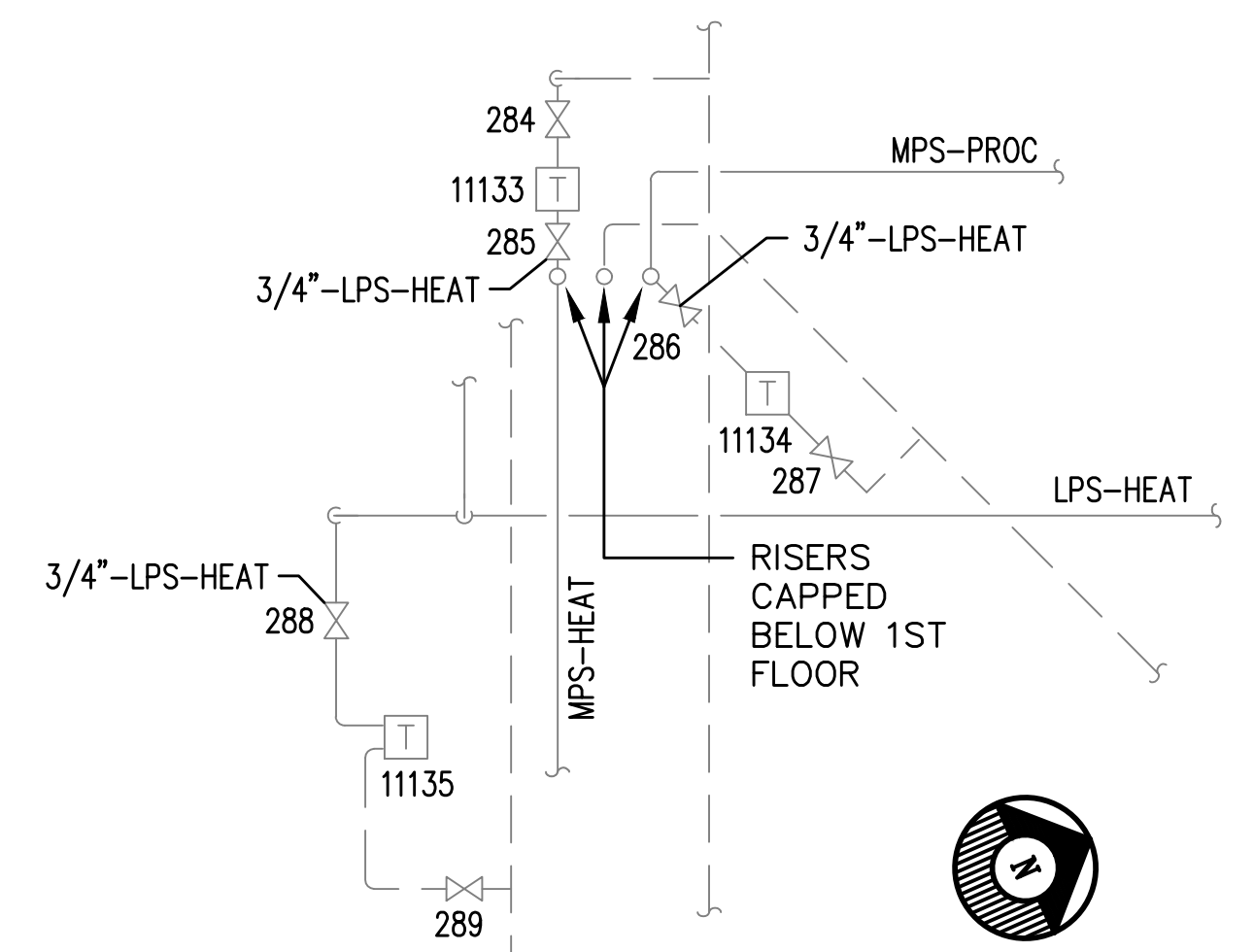
DETAIL 2  
SCALE: NONE



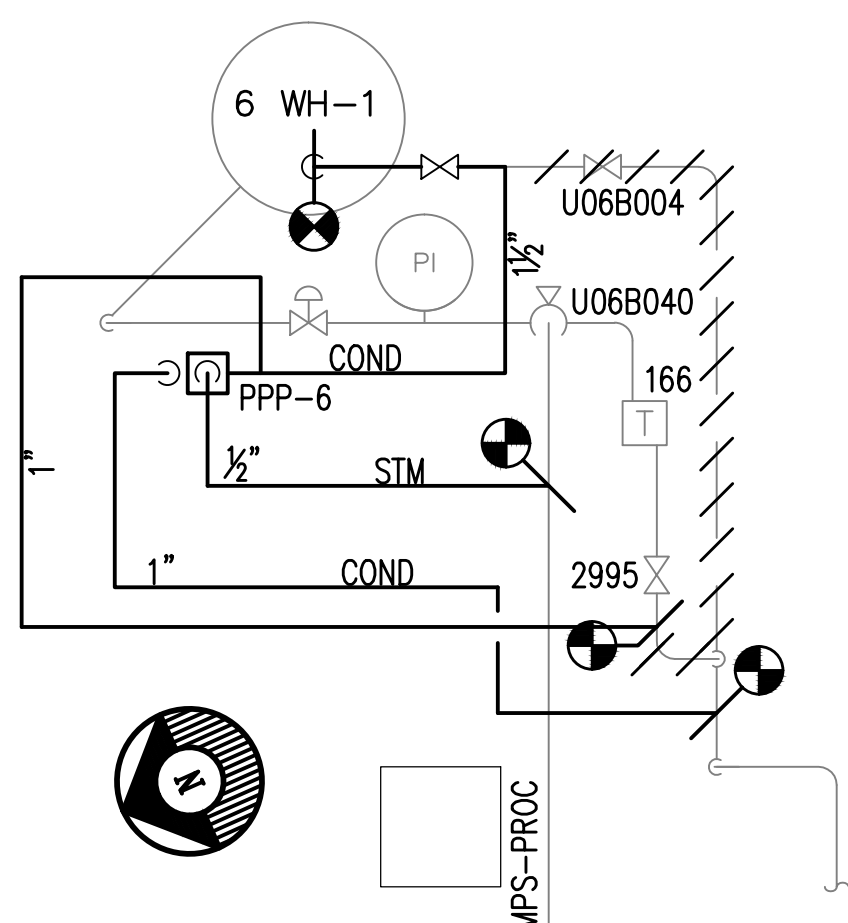
DETAIL 3  
SCALE: NONE



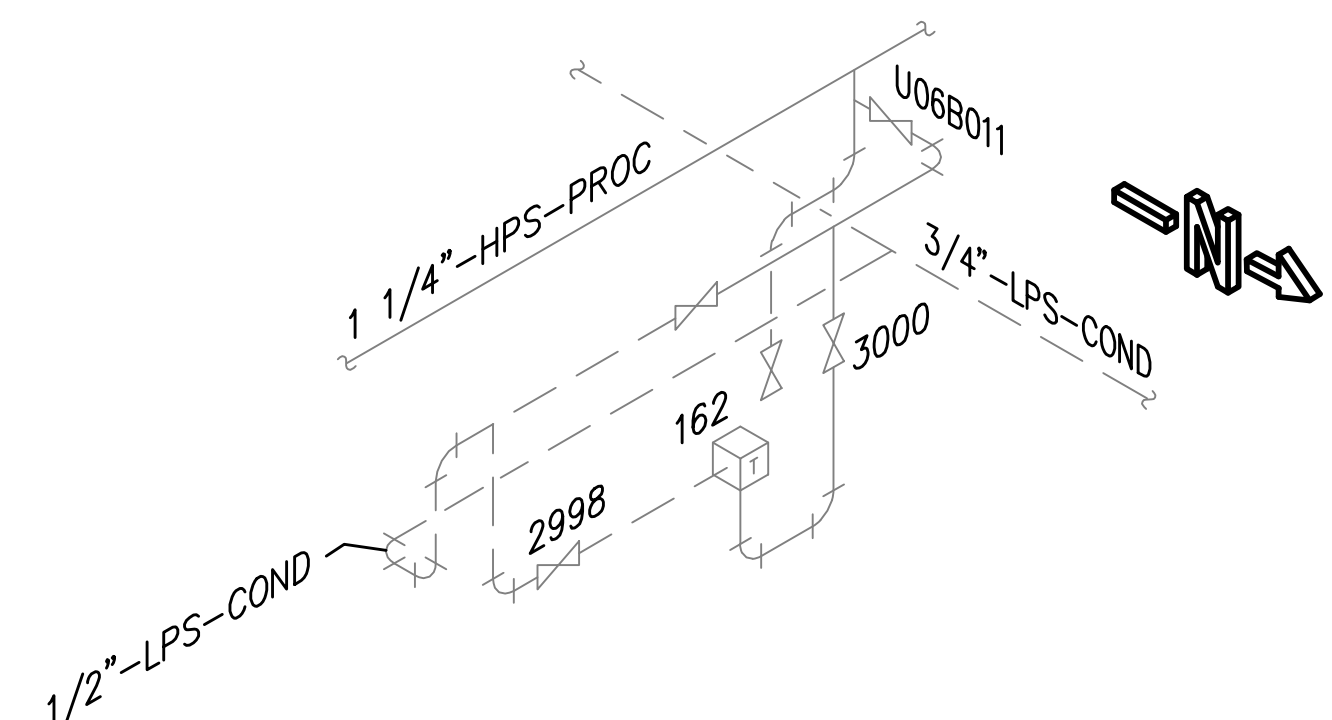
DETAIL 4  
SCALE: NONE



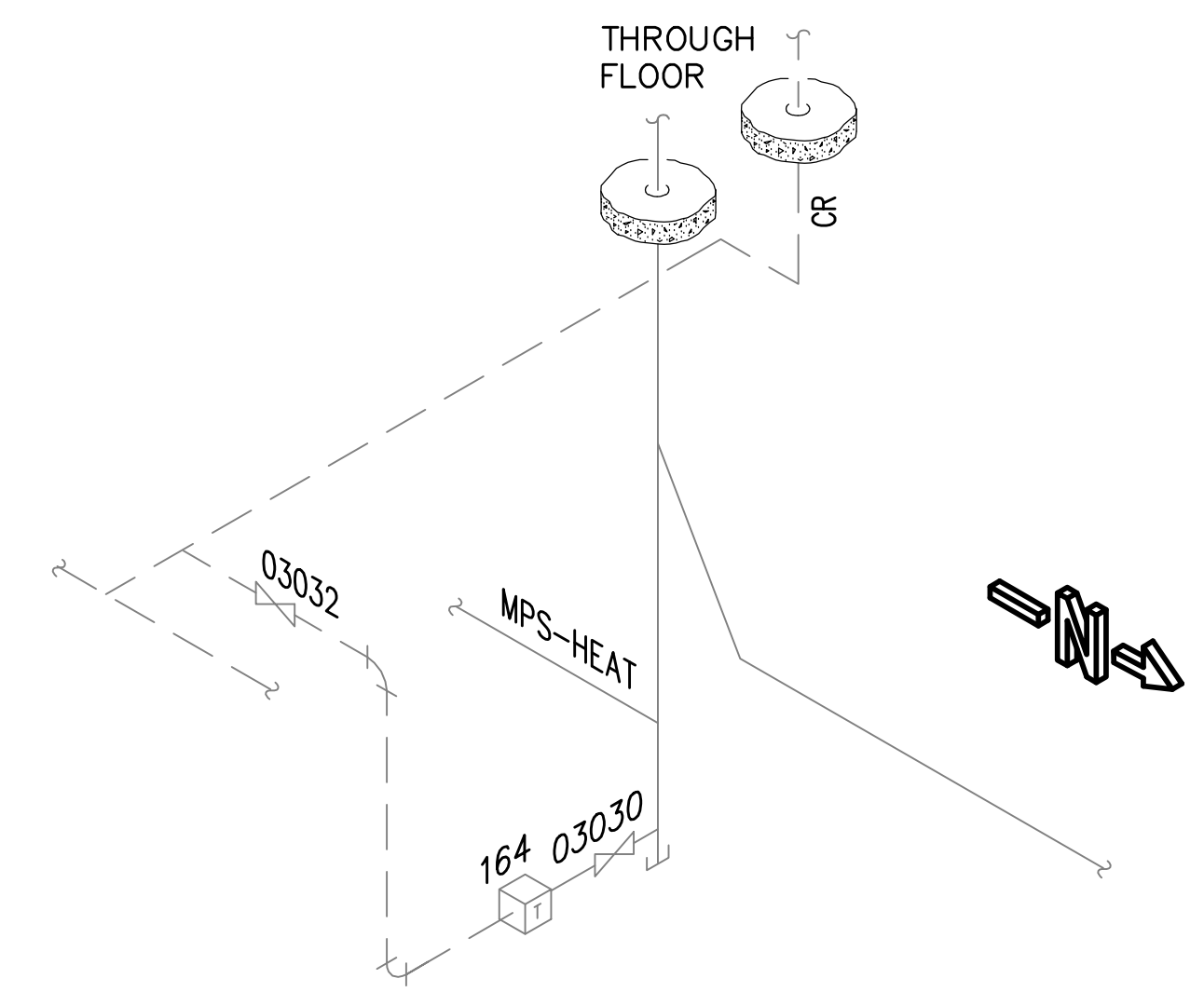
DETAIL 5  
SCALE: NONE



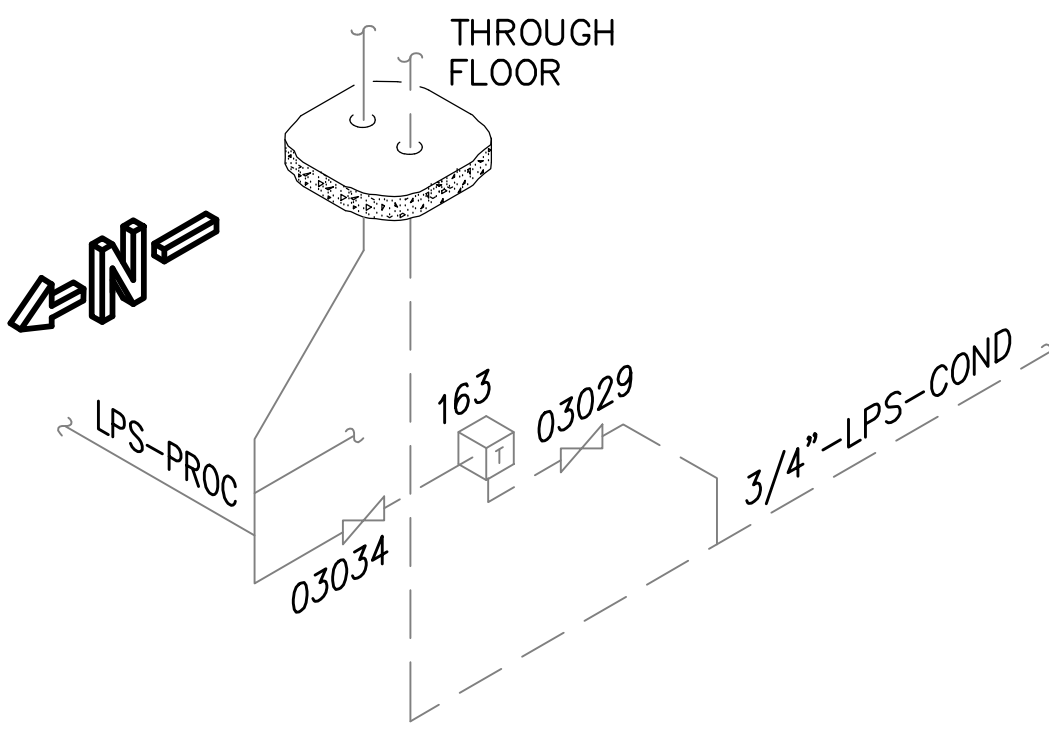
DETAIL 6  
SCALE: NONE



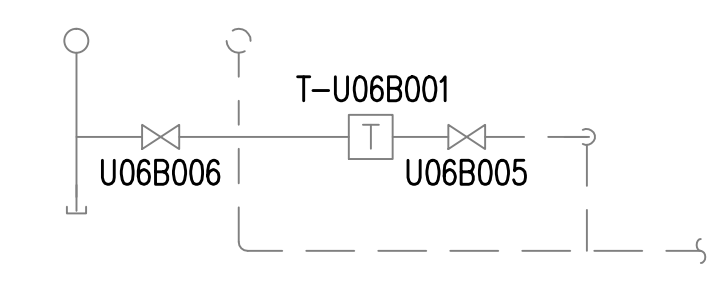
DETAIL 7 ISOMETRIC  
SCALE: NONE



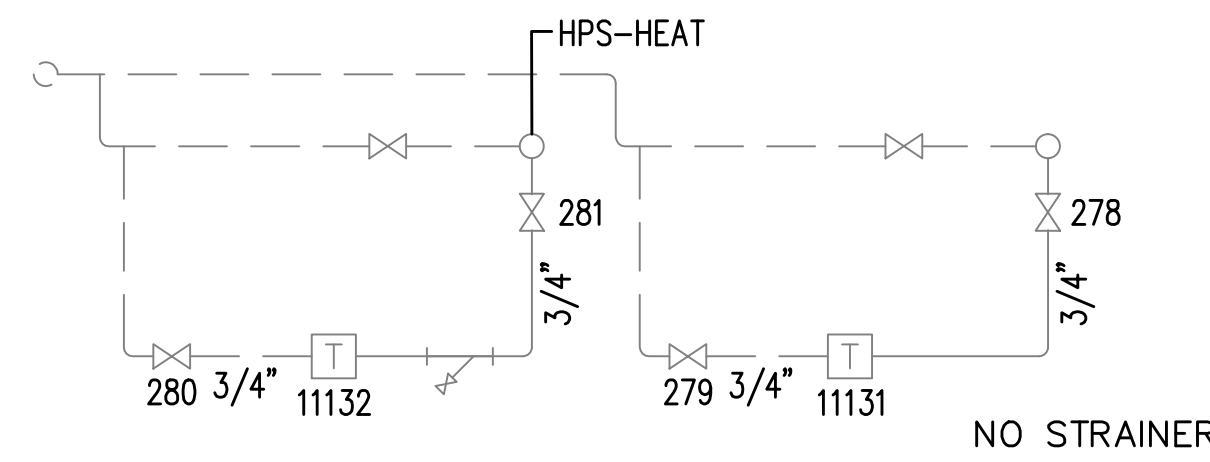
DETAIL 8 ISOMETRIC  
SCALE: NONE



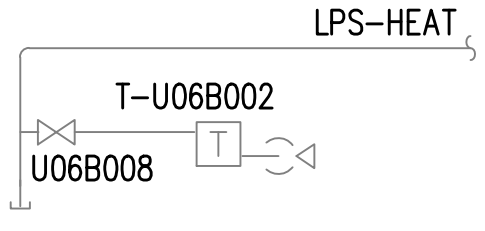
DETAIL 9 ISOMETRIC  
SCALE: NONE



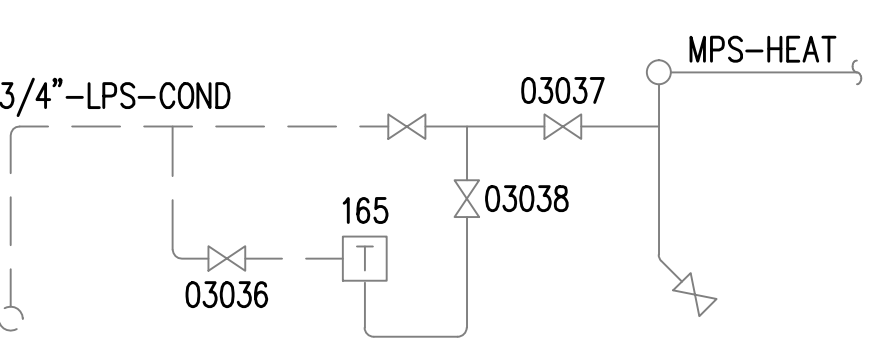
SECTION A  
SCALE: NONE



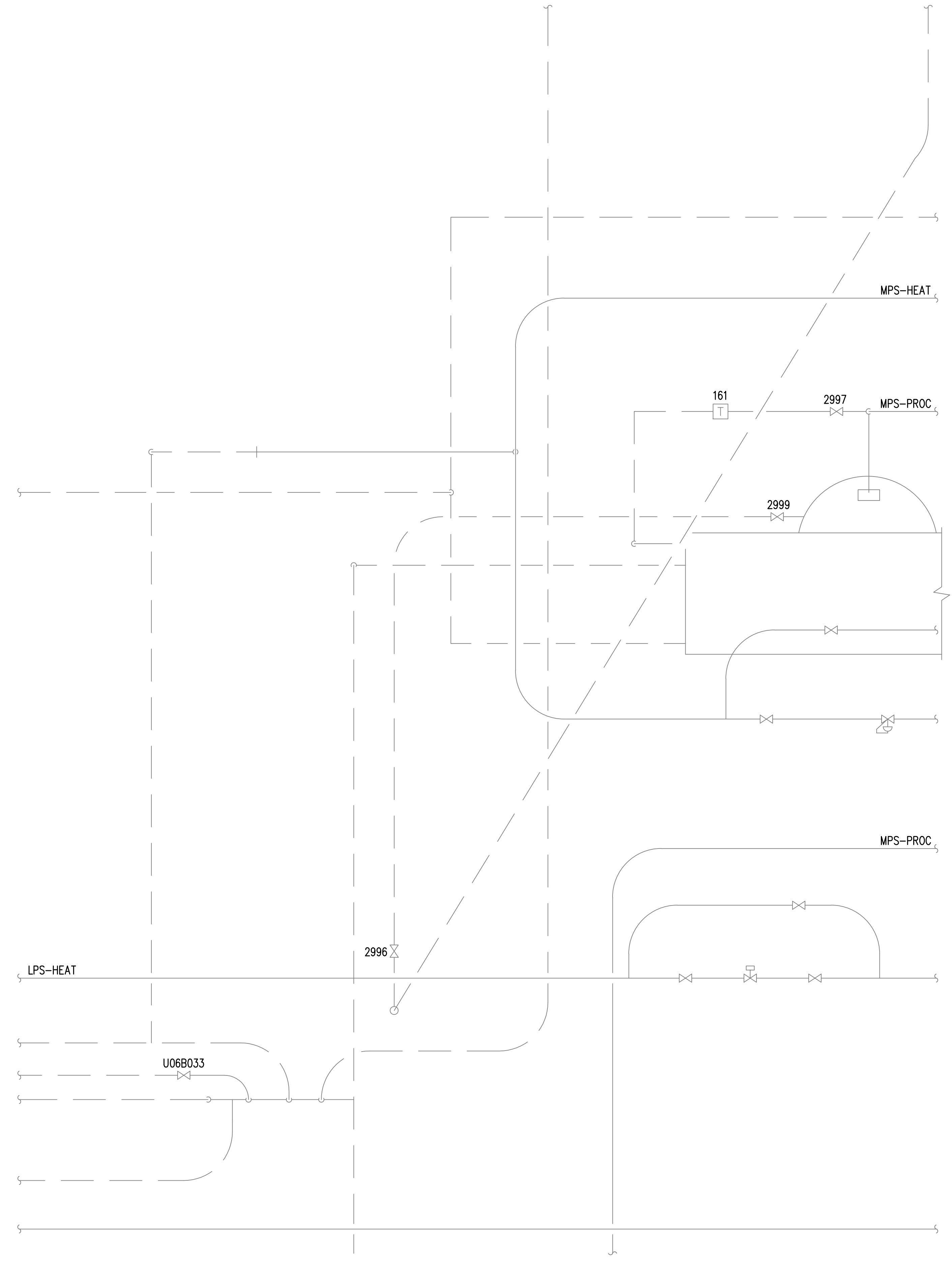
SECTION B  
SCALE: NONE



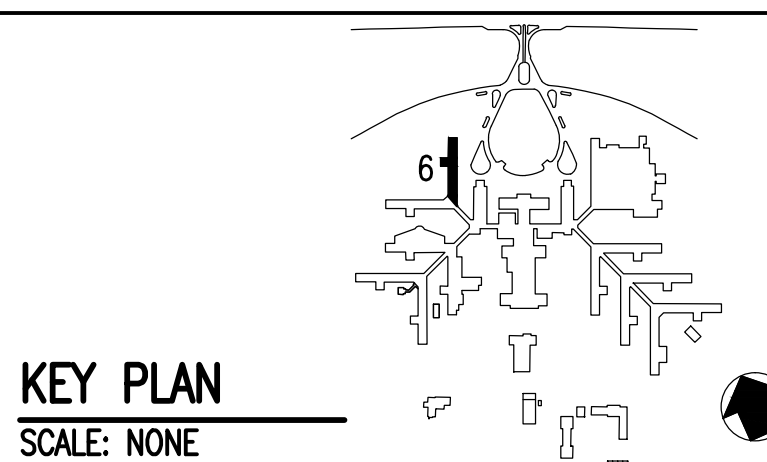
SECTION C  
SCALE: NONE



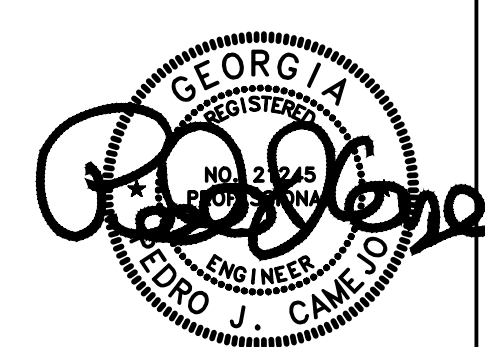
SECTION D  
SCALE: NONE



DETAIL 10  
SCALE: NONE



KEY PLAN  
SCALE: NONE



Revisions	Date

**AES**  
APPLIED ENGINEERING  
SOLUTIONS  
440 Martin Luther King, Jr. Blvd., Suite 401  
Macon, Georgia 31201  
(478) 314-1270  
www.aes-pe.com




Drawing Title
DETAILS
FINAL SUBMITTAL

Project Title
STEAM AND CONDENSATE PIPING SYSTEM STUDY
Building Number
6
Location
CARL VINSON VA MEDICAL CENTER DUBLIN, GEORGIA

Date
JUNE 22, 2012
Project No.
557-10-109
Drawing No.
06-G-003
Dwg. 40 Of 87

Veterans  
Administration