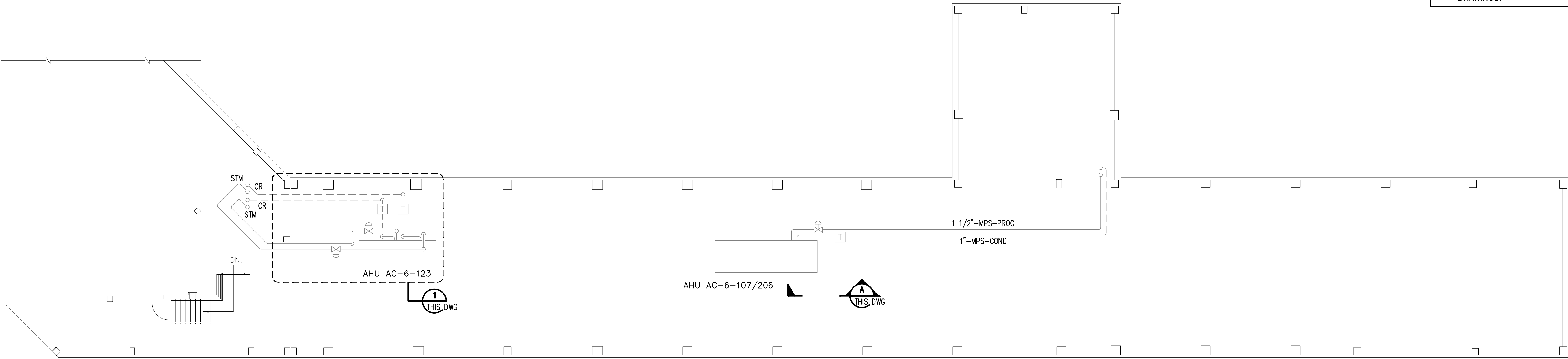
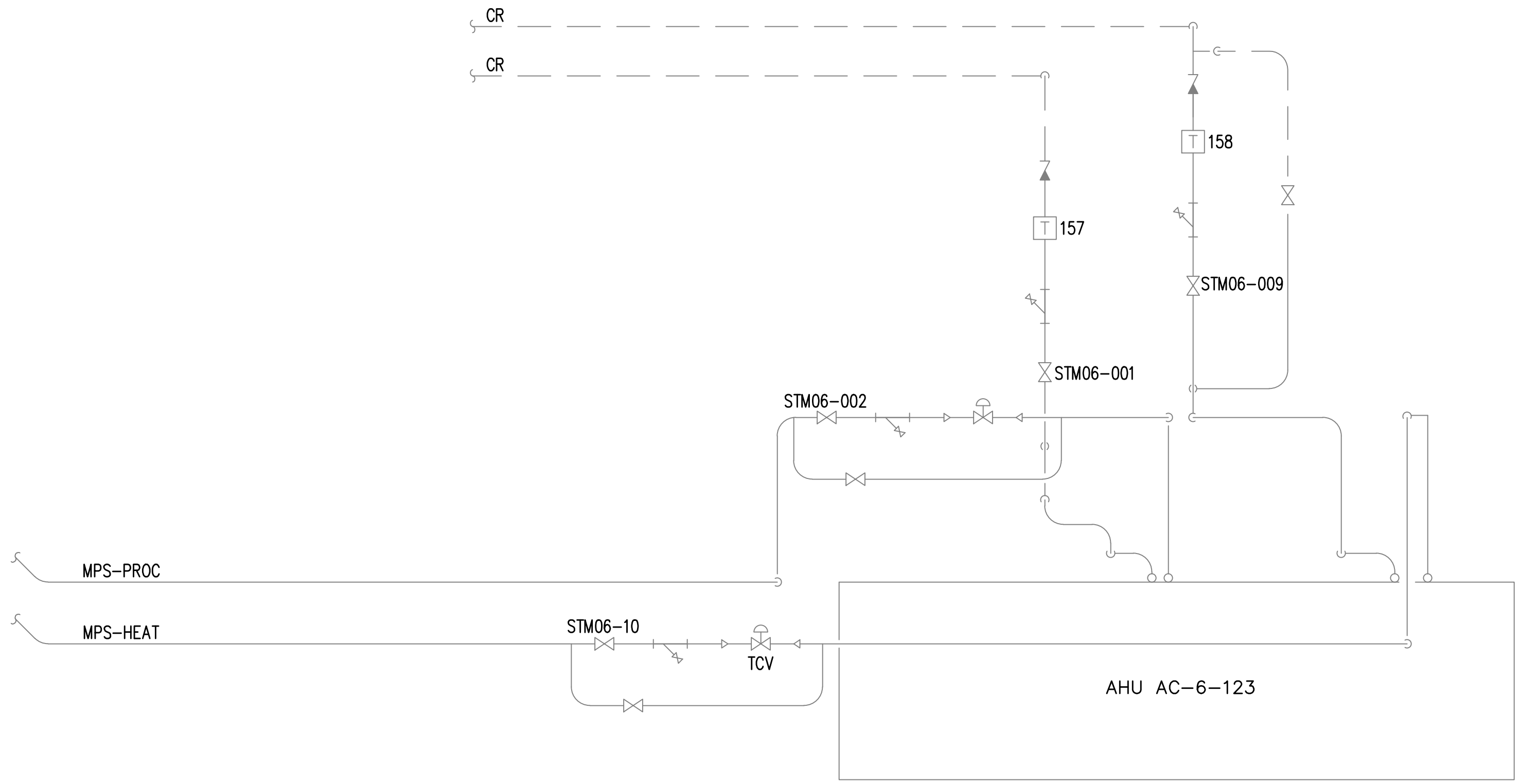


three inches = one foot
one and one-half inches = one foot
one inch = one foot
three-quarters inch = one foot
one-half inch = one foot
one-quarter inch = one foot
one-eighth inch = one foot

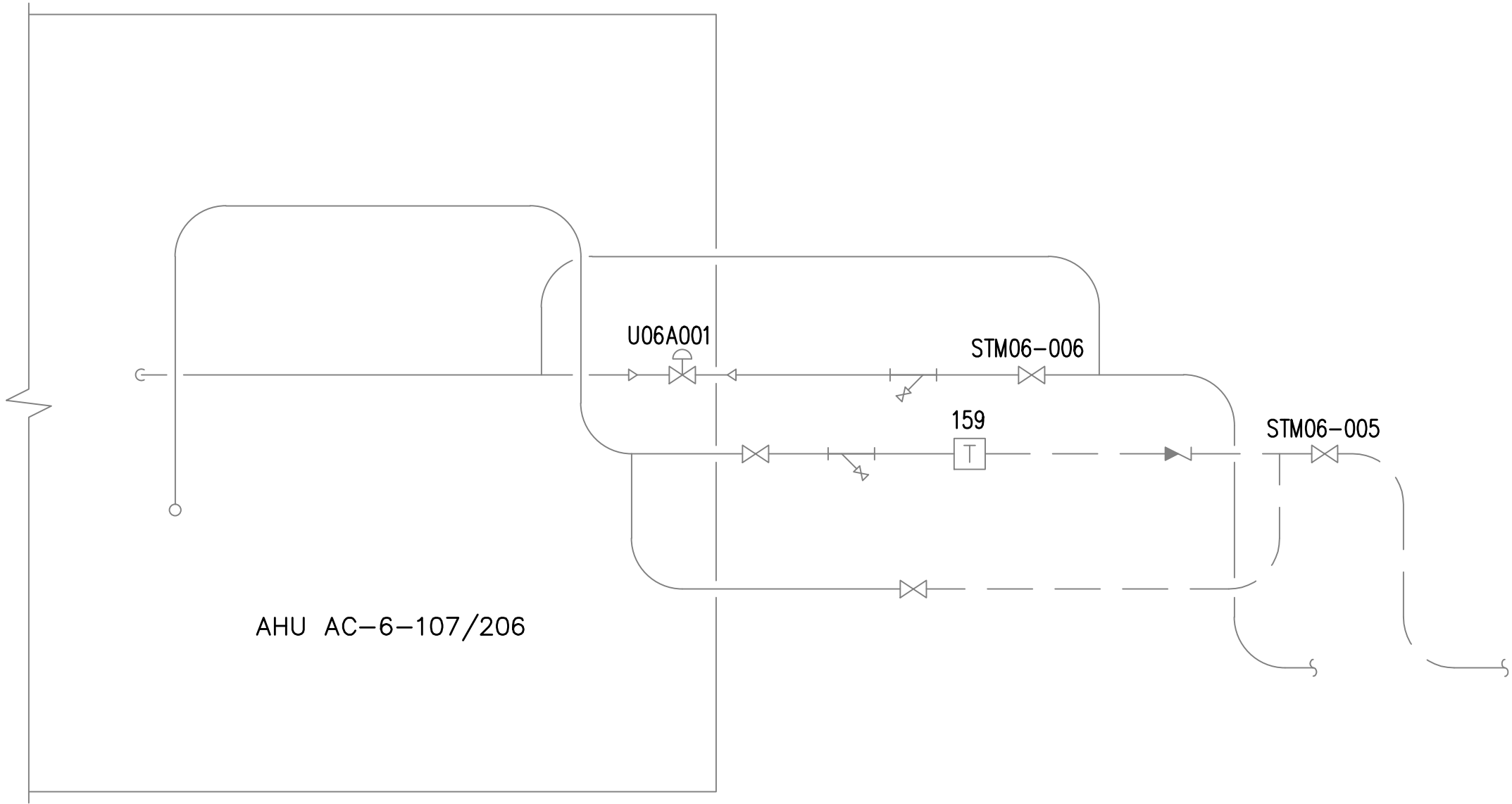
DRAWING NOTES:
A. NO WORK REQUIRED THIS AREA. SHEET INCLUDED FOR COMPLETENESS OF RECORD DRAWINGS.



BUILDING 6
ATTIC FLOOR PLAN
SCALE: 1/8" = 1'-0"



DETAIL 1
SCALE: NONE

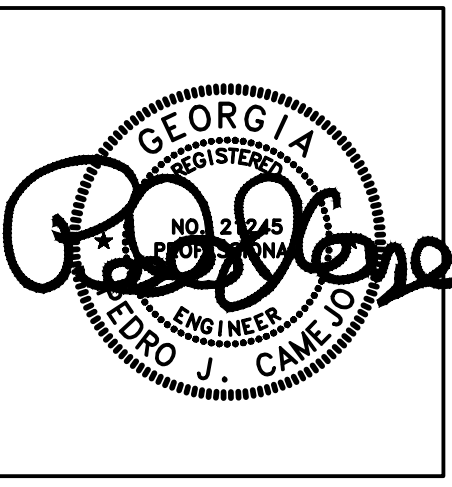


SECTION A
SCALE: NONE

| Revisions | Date |
|-----------|------|
| | |
| | |
| | |
| | |
| | |
| | |
| | |
| | |
| | |

AES
APPLIED ENGINEERING SOLUTIONS
440 Martin Luther King, Jr. Blvd., Suite 401
Macon, Georgia 31201
(478) 314-1270
www.aes-pe.com

KEY PLAN
SCALE: NONE



Drawing Title
**ATTIC FLOOR PLAN
DETAILS AND SECTIONS**

FINAL SUBMITTAL

Project Title
**STEAM AND CONDENSATE
PIPING SYSTEM STUDY**

| | | |
|---|---------|-------|
| Building Number 6 | Checked | Drawn |
| Location CARL VINSON VA MEDICAL CENTER DUBLIN, GEORGIA | | |

| |
|----------------------------------|
| Date JUNE 22, 2012 |
| Project No. 557-10-109 |
| Drawing No. 06-G-301 |
| Dwg. 43 Of 87 |

**Veterans
Administration**