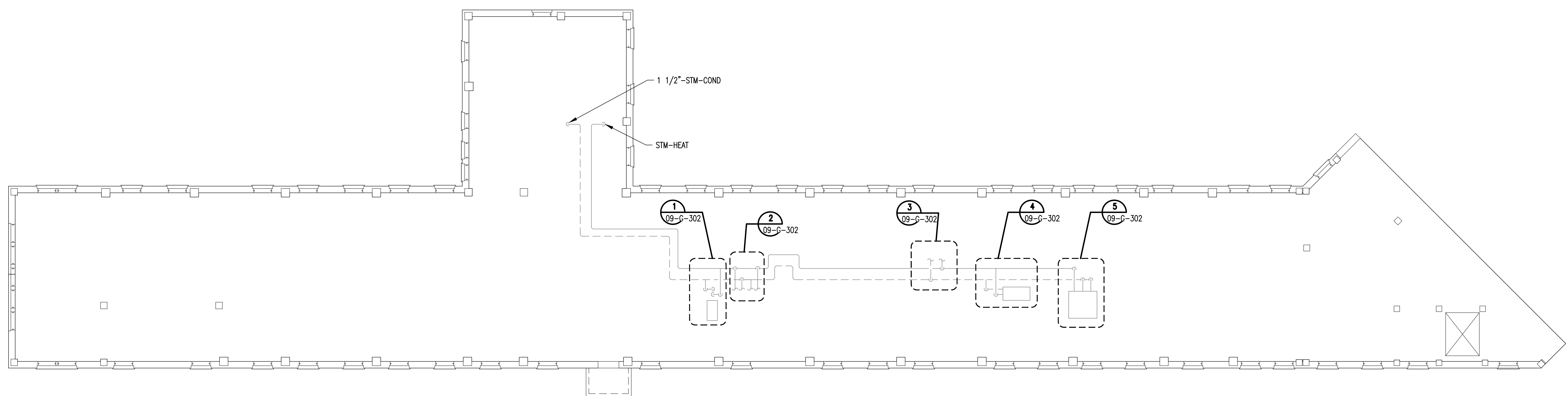
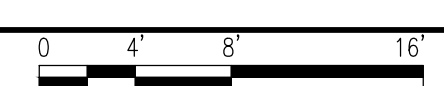


three-eighths inch = one foot
one-quarter inch = one foot
three-eighths inch = one foot
one-half inch = one foot
three-quarters inch = one foot
one inch = one foot
one and one-half inches = one foot
three inches = one foot

DRAWING NOTES:
A. NO WORK REQUIRED THIS AREA. SHEET INCLUDED FOR COMPLETENESS OF RECORD DRAWINGS.



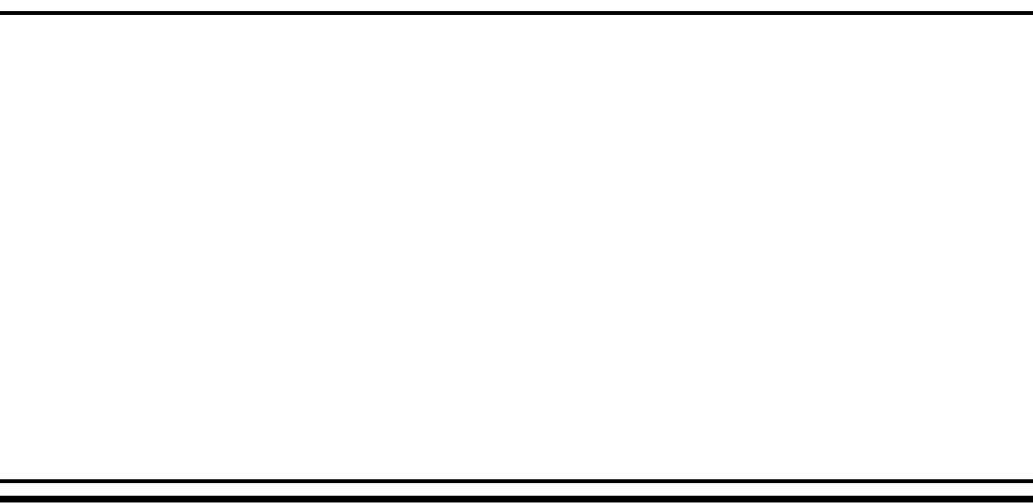
BUILDING 9
ATTIC FLOOR PLAN
SCALE: 1/8" = 1'-0"



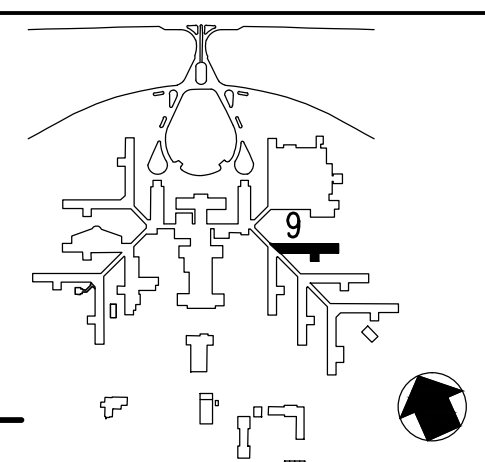
Revisions	Date

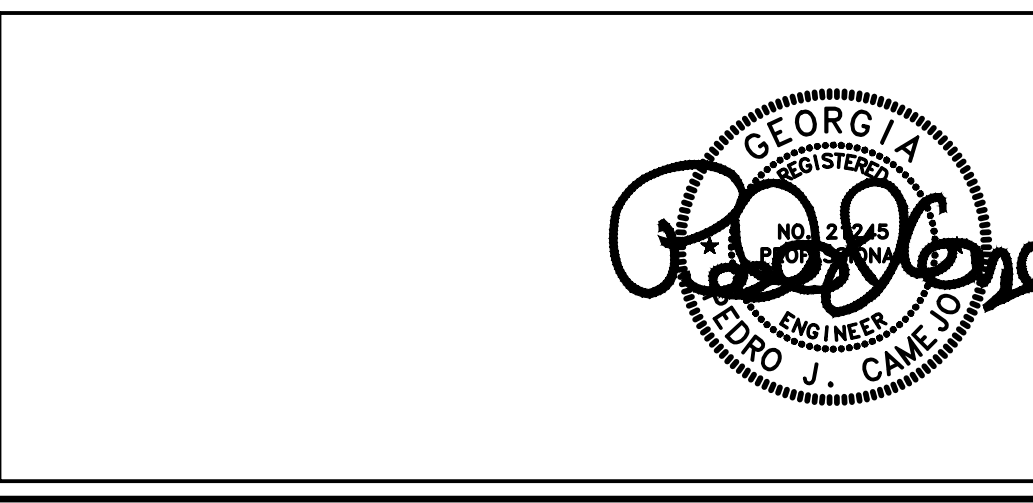


APPLIED ENGINEERING SOLUTIONS
440 Martin Luther King, Jr. Blvd., Suite 401
Macon, Georgia 31201
(478) 314-1270
www.aes-pe.com



KEY PLAN
SCALE: NONE





Attic Floor Plan
FINAL SUBMITTAL

Project Title STEAM AND CONDENSATE PIPING SYSTEM STUDY		
Building Number 9	Checked PJC	Drawn JSW
Location CARL VINSON VA MEDICAL CENTER DUBLIN, GEORGIA		

Date JUNE 22, 2012
Project No. 557-10-109
Drawing No. 09-G-301
Dwg. 47 Of 87

Veterans Administration