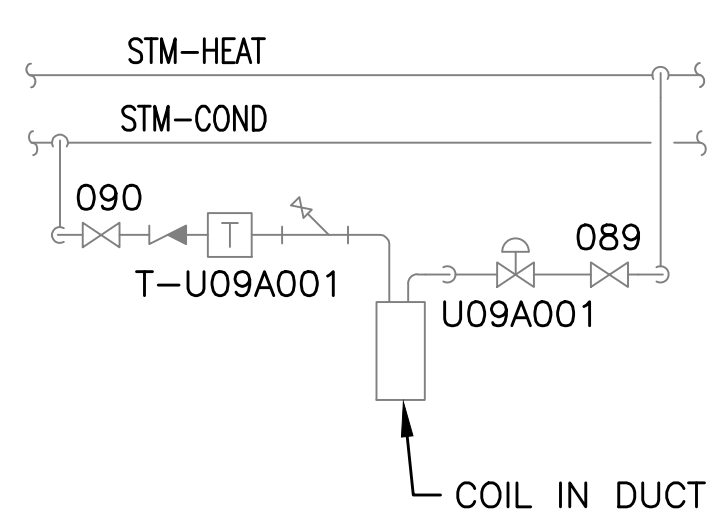
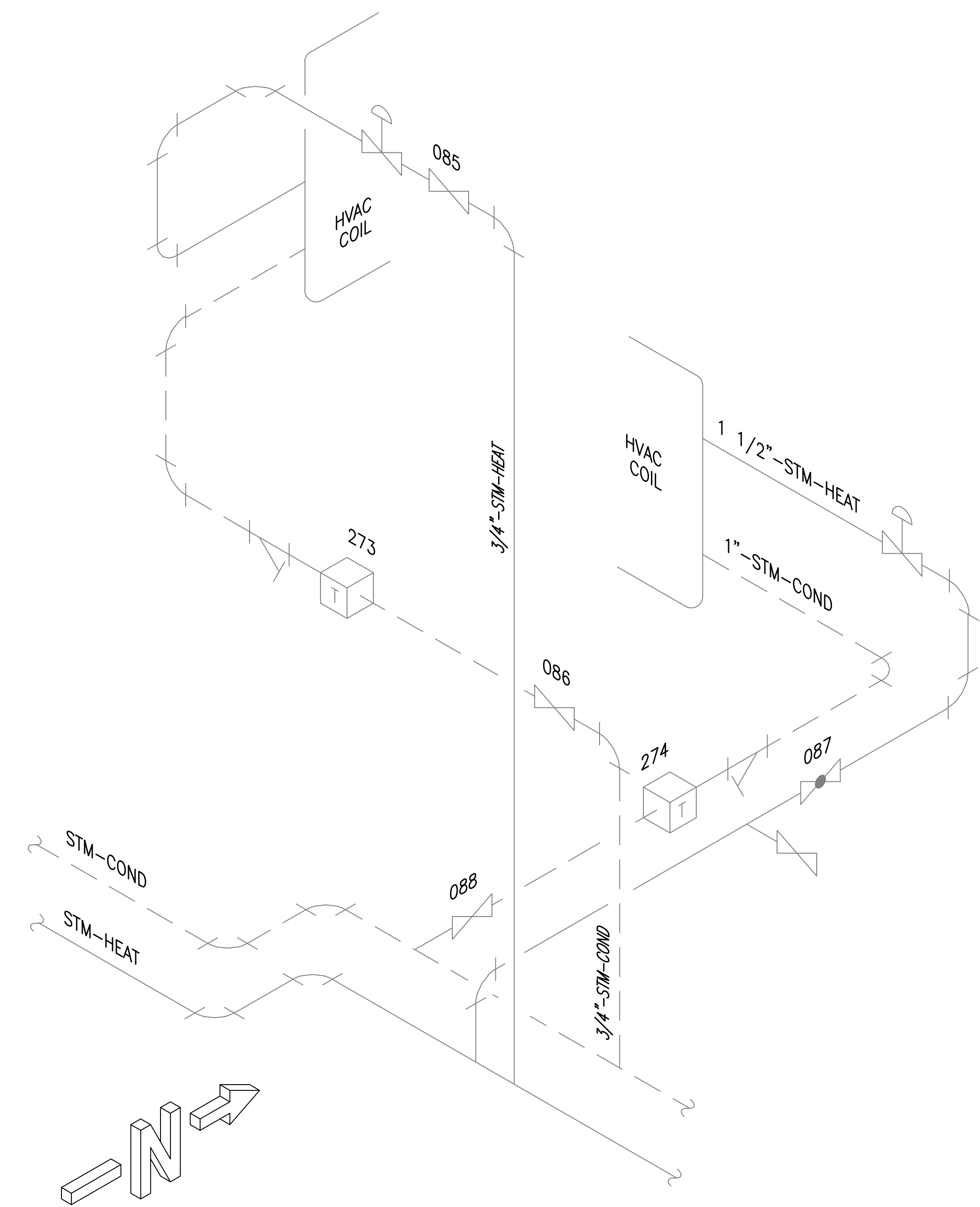


three inches = one foot
one and one-half inches = one foot
one inch = one foot
three-quarters inch = one foot
one-half inch = one foot
one-quarter inch = one foot
one-eighth inch = one foot

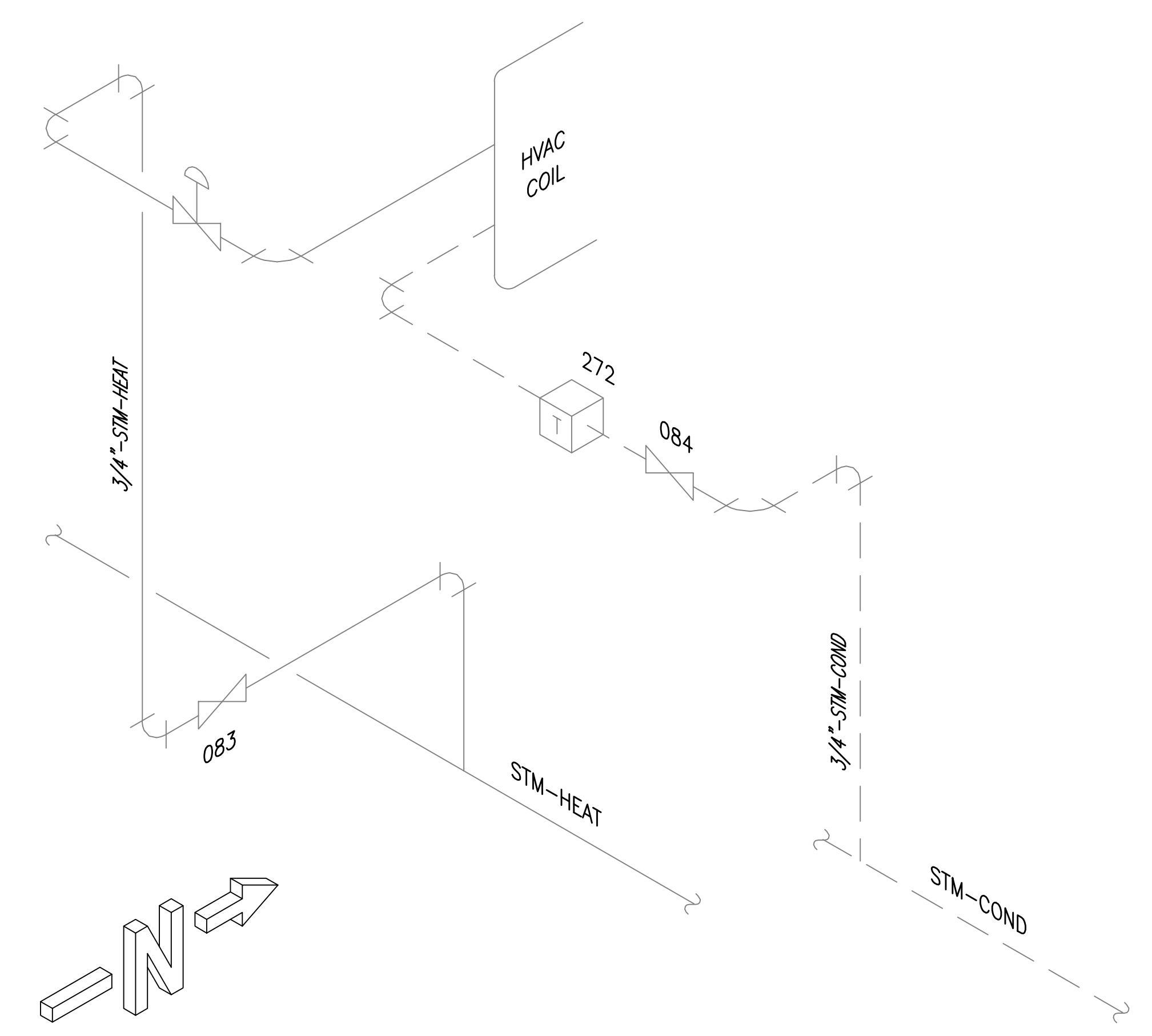
DRAWING NOTES:
A. NO WORK REQUIRED THIS AREA. SHEET INCLUDED FOR COMPLETENESS OF RECORD DRAWINGS.



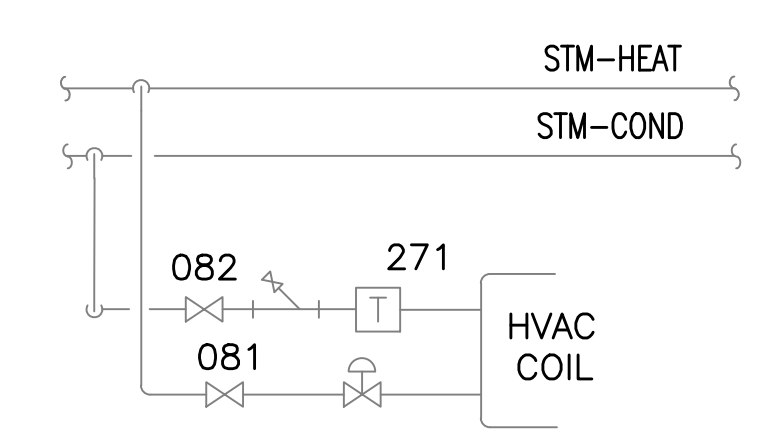
DETAIL 1
SCALE: NONE



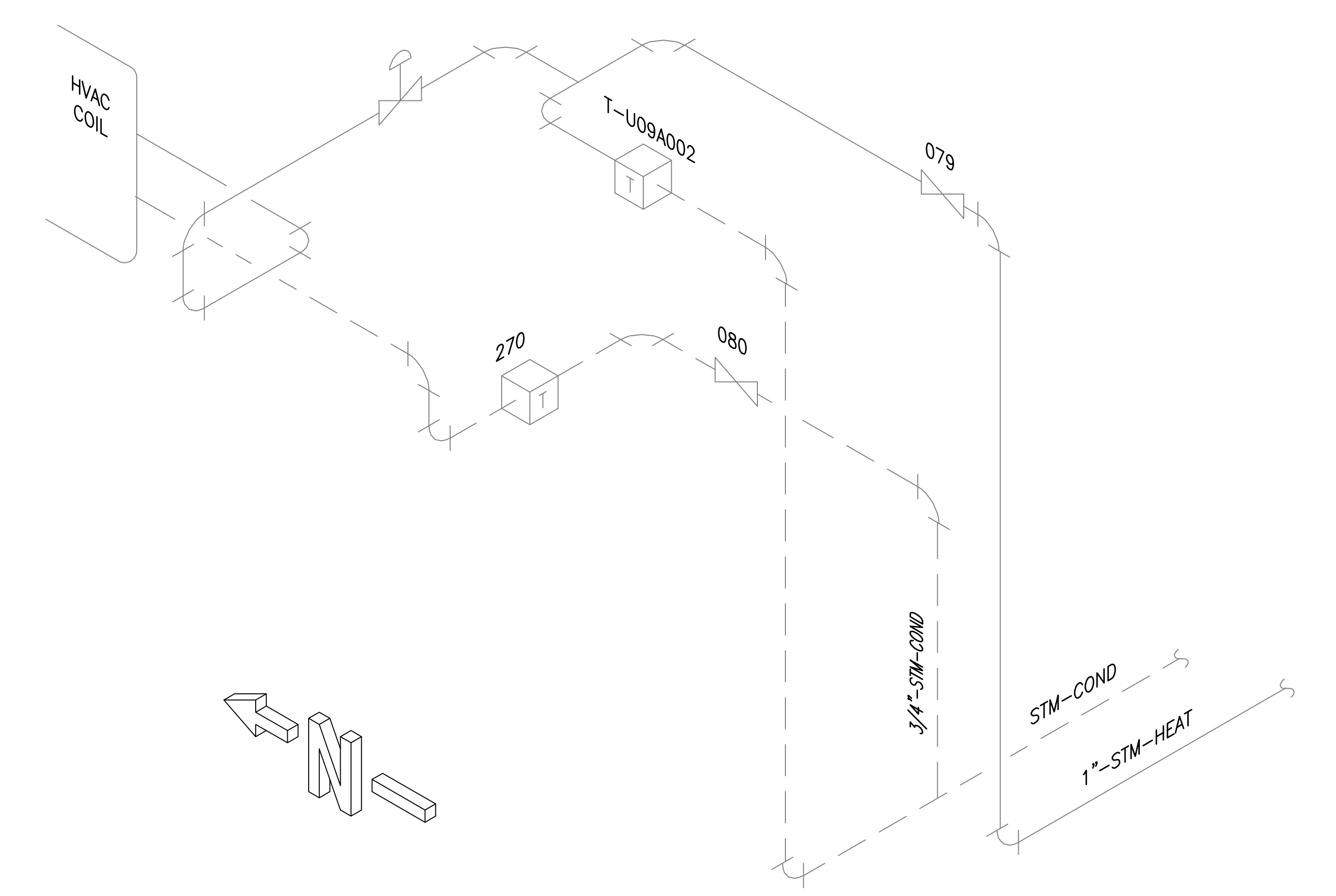
DETAIL 2
SCALE: NONE



DETAIL 3
SCALE: NONE

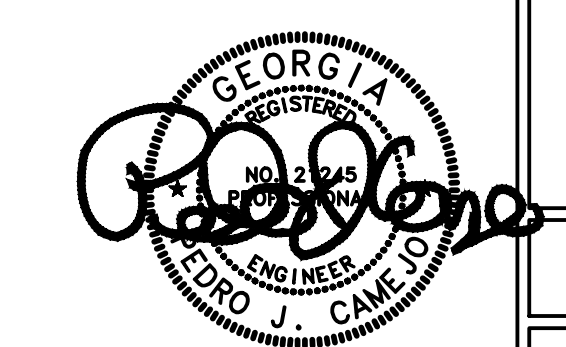
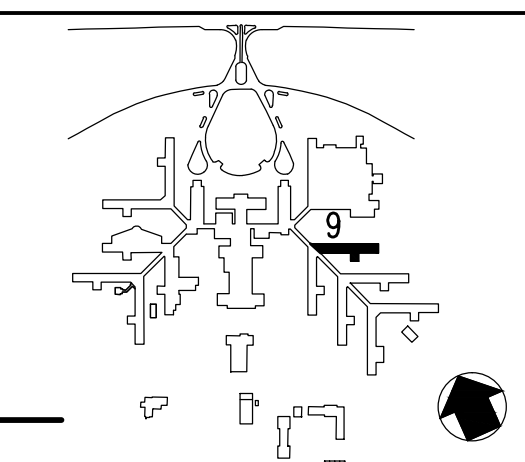


DETAIL 4
SCALE: NONE



DETAIL 5
SCALE: NONE

KEY PLAN
SCALE: NONE



Revisions	Date

AES
APPLIED ENGINEERING
SOLUTIONS
440 Martin Luther King, Jr. Blvd., Suite 401
Macon, Georgia 31201
(478) 314-1270
www.aes-pe.com

Drawing Title
DETAILS
FINAL SUBMITTAL

Project Title
STEAM AND CONDENSATE PIPING SYSTEM STUDY
Building Number
9
Location
CARL VINSON VA MEDICAL CENTER DUBLIN, GEORGIA

Date
JUNE 22, 2012
Project No.
557-10-109
Drawing No.
09-G-302
Dwg. 48 Of 87

Veterans
Administration