

1
2
3
4
5
6
7
8
9

A
three inches = one foot

B
one and one-half inches = one foot

C
one inch = one foot

D
three-quarters inch = one foot

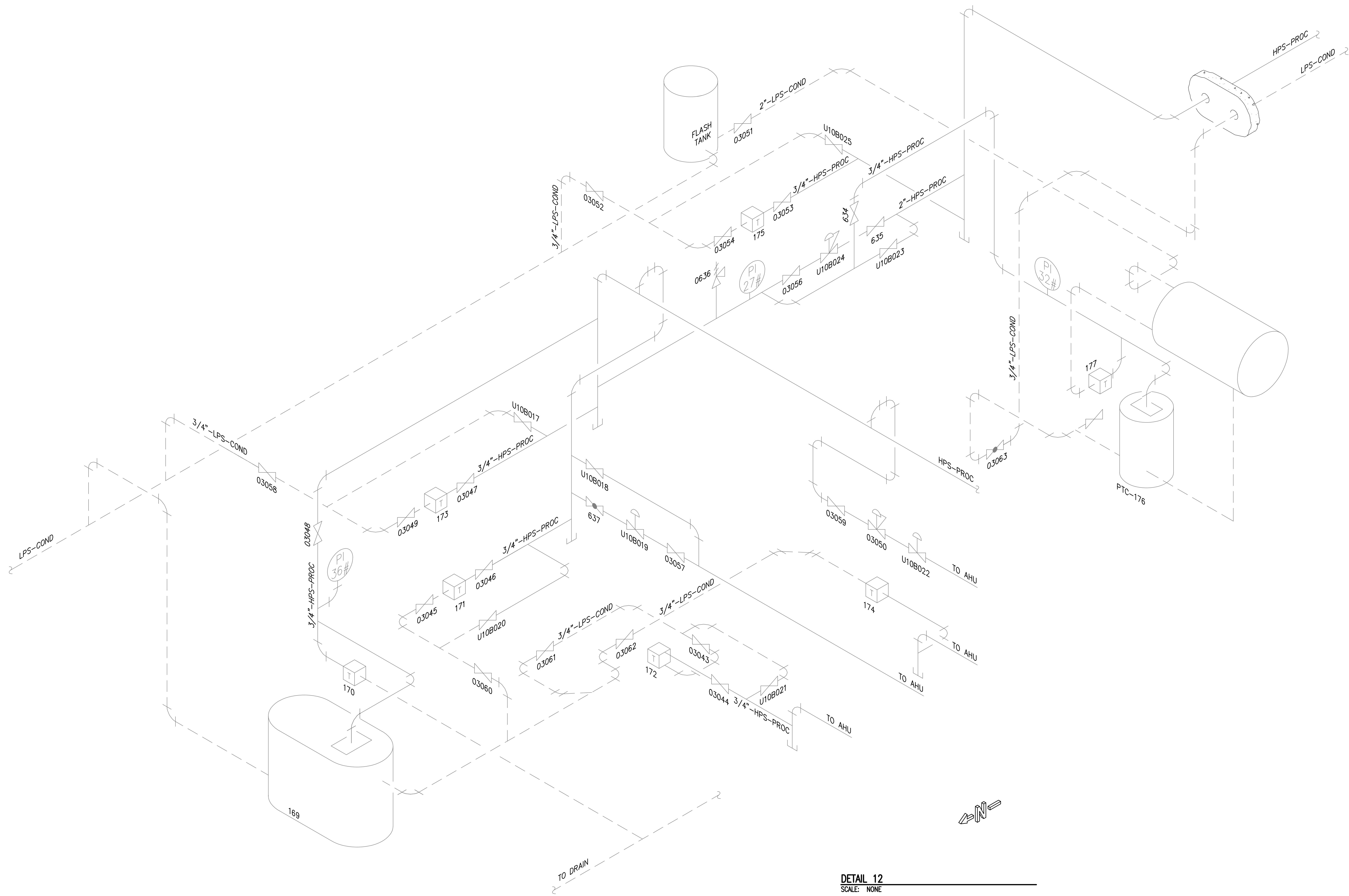
E
one-half inch = one foot

F
three-eighths inch = one foot


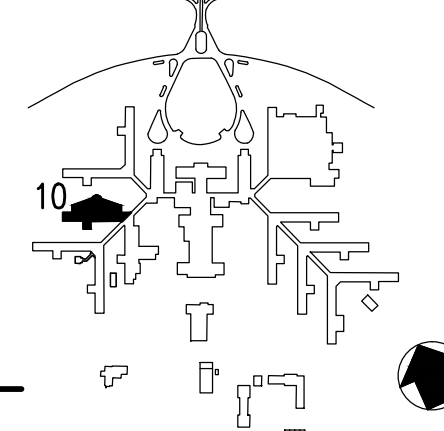
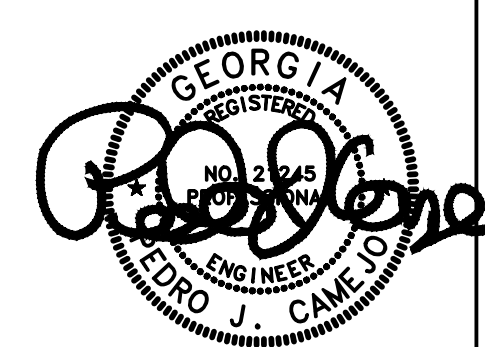
G
one-quarter inch = one foot

H
one-eighth inch = one foot

DRAWING NOTES:
A. NO WORK REQUIRED THIS AREA. SHEET INCLUDED FOR COMPLETENESS OF RECORD DRAWINGS.



DETAIL 12
SCALE: NONE

<div>Revisions</div> <table border="1"><thead><tr><th>No.</th><th>Description</th><th>Date</th></tr></thead><tbody><tr><td> </td><td> </td><td> </td></tr><tr><td> </td><td> </td><td> </td></tr><tr><td> </td><td> </td><td> </td></tr></tbody></table>	No.	Description	Date										<div> APPLIED ENGINEERING SOLUTIONS 440 Martin Luther King, Jr. Blvd., Suite 401 Macon, Georgia 31201 (478) 314-1270 www.aes-pe.com</div>	<div> KEY PLAN SCALE: NONE</div>	<div></div>	Drawing Title DETAILS		Project Title STEAM AND CONDENSATE PIPING SYSTEM STUDY		Date JUNE 22, 2012	
	No.	Description	Date																		
Building Number 10		Checked PJC	Drawn JSW	Project No. 557-10-109																	
Location CARL VINSON VA MEDICAL CENTER DUBLIN, GEORGIA		Drawing No. 10-G-004		Dwg. 53 Of 87																	
FINAL SUBMITTAL																					

Veterans Administration