

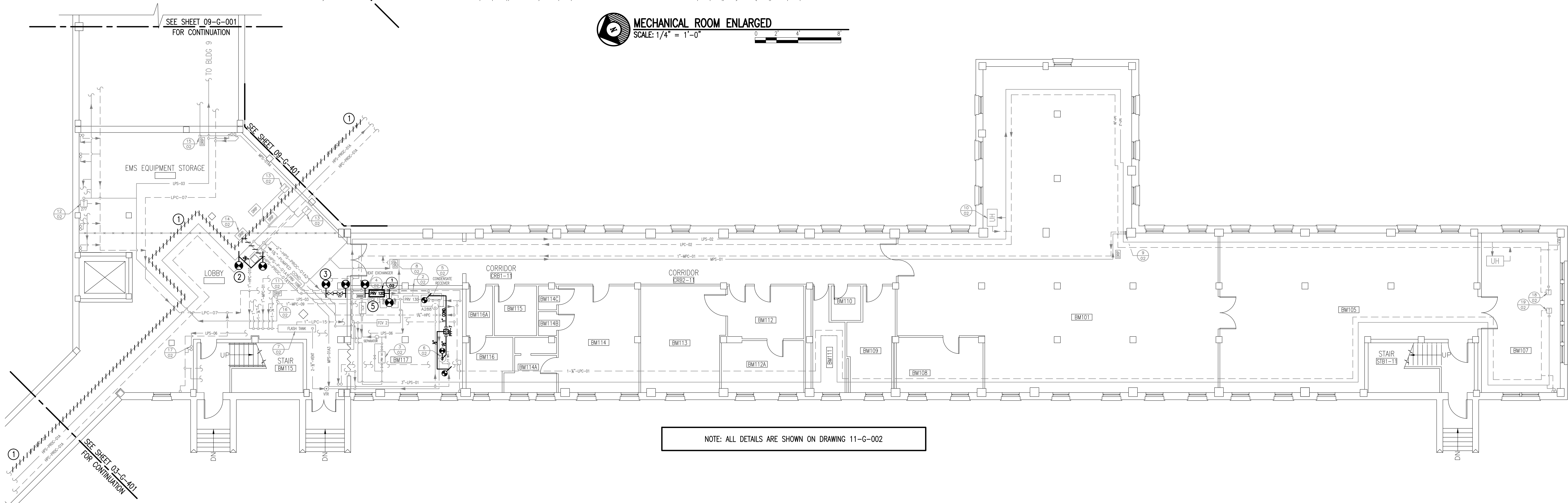
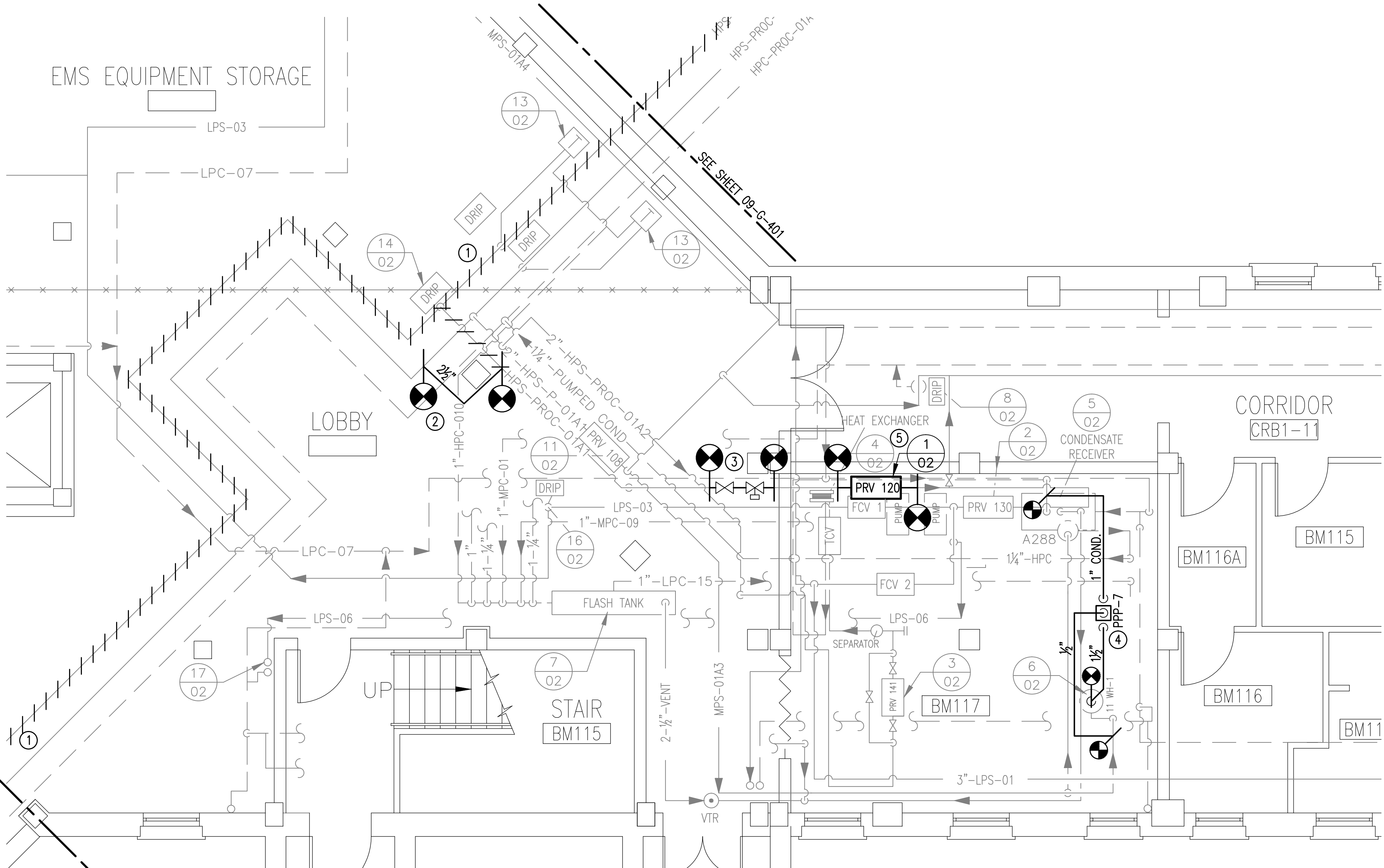
three inches = one foot
one and one-half inches = one foot
one inch = one foot
three-quarters inch = one foot
one-half inch = one foot
three-eighths inch = one foot
one-quarter inch = one foot
one-eighth inch = one foot

A
B
C
D
E
F
G

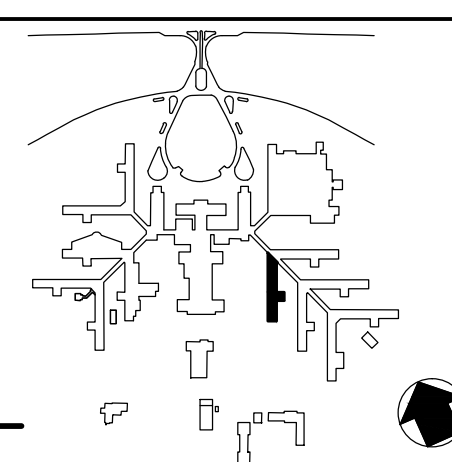
NOTES:

(THIS SHEET ONLY)

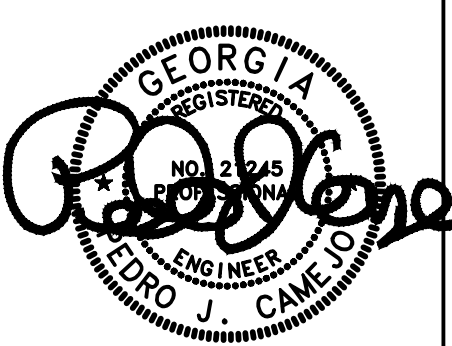
- 1 REMOVE AND HAUL AWAY IN ITS ENTIRETY HPS HEATING STEAM PIPING. TURN OVER TO VA COTR ALL VALVES AND STEAM TRAP TAGS THAT ARE NOT REUSED.
- 2 PROVIDE NEW 2½" HPS PROCESS CONNECTION TO MEDIUM PRESSURE HEATING PRESSURE REDUCING VALVES. SEE DETAIL 14 ON 11-G-002.
- 3 PROVIDE NEW 2½" GATE VALVE AND NEW ELECTRICAL ACTUATED ON/OFF 2½" VALVE. VALVE SHALL BE CONTROLLED BY TRITIUM CONTROL SYSTEM AND SHALL OPEN WHEN WHEN OUTSIDE AIR TEMPERATURE IS 55F OR BELOW (ADJUSTABLE) FOR 5 MINUTES OR LONGER.
- 4 PROVIDE SCHEDULED AUTOMATIC PUMP TRAP PPP-7 AS DETAILED (TYPE 2) ON SHEET I-1.04.
- 5 REPLACE PRV 120 AS DETAILED AND SCHEDULED.



KEY PLAN
SCALE: NONE



KEY PLAN
SCALE: NONE



Drawing Title

BASEMENT PLAN
AND ENLARGED PLAN

FINAL SUBMITTAL

Project Title

STEAM AND CONDENSATE
PIPING SYSTEM STUDY

Building Number

11

Checked

Drawn

Location CARL VINSON VA MEDICAL CENTER
DUBLIN, GEORGIA

Date

JUNE 22, 2012

Project No.

557-10-109

Drawing No.

11-G-001

Dwg. 55 Of 87

Veterans
Administration