

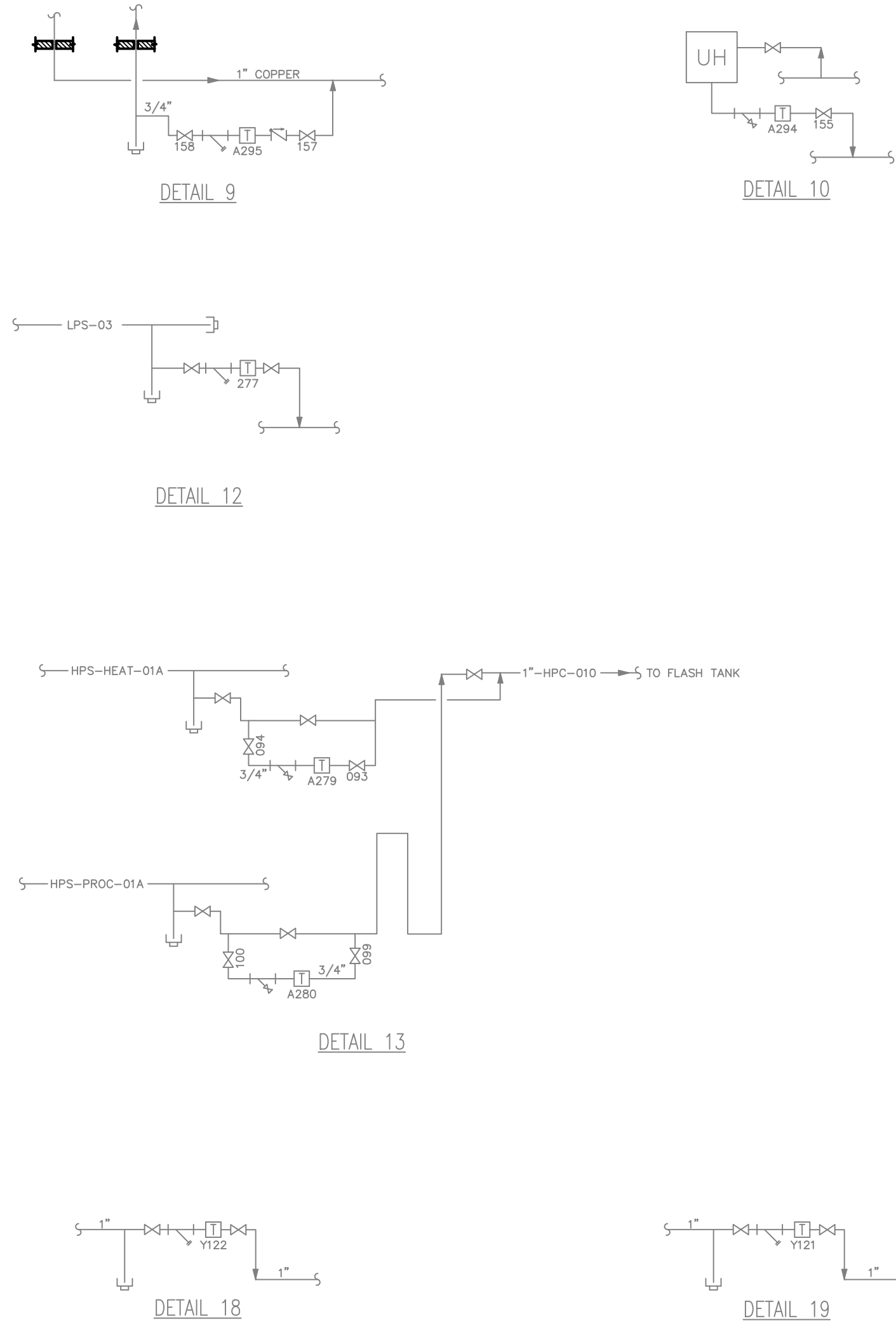
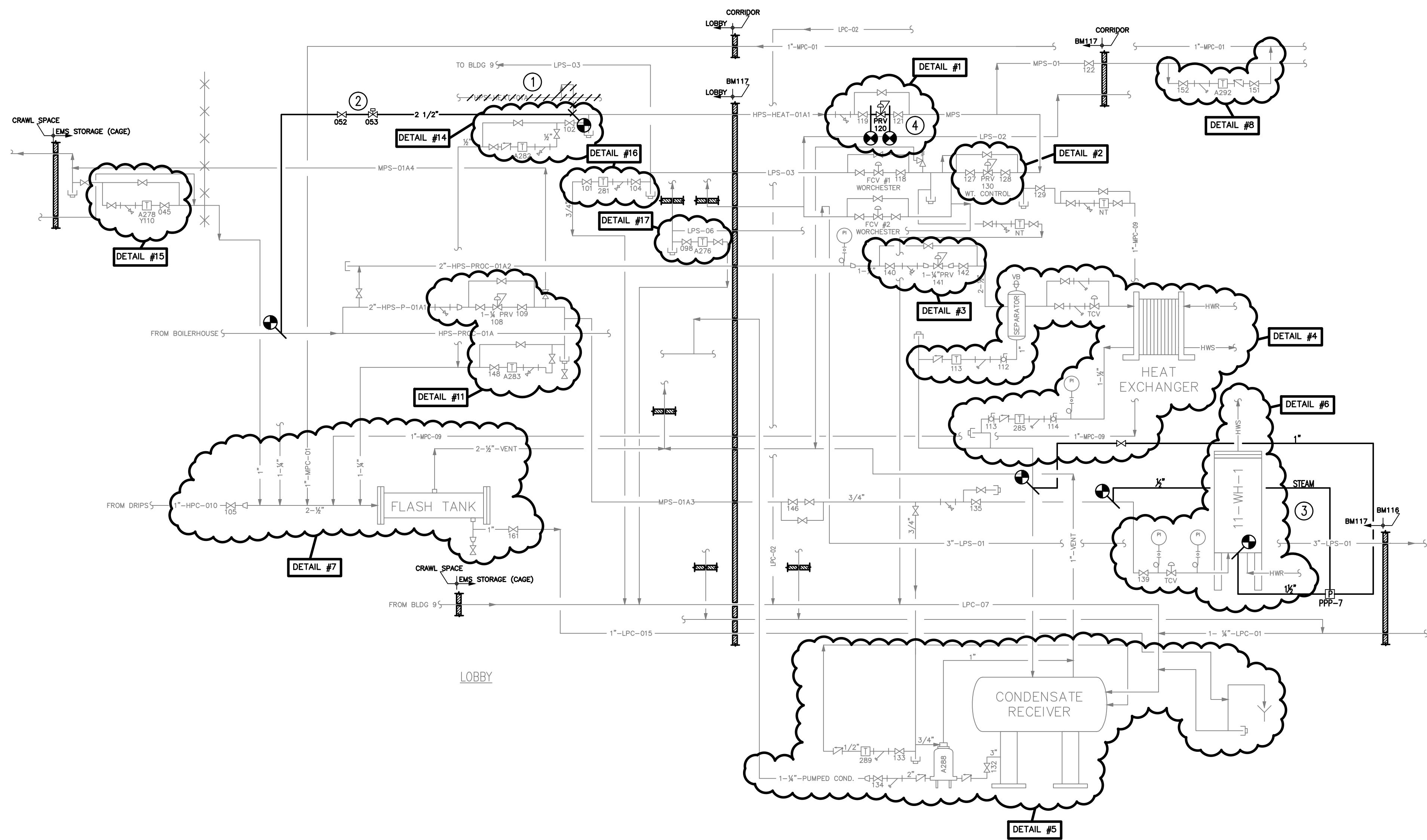
three inches = one foot  
one and one-half inches = one foot  
one inch = one foot  
three-quarters inch = one foot  
one-half inch = one foot  
three-eighths inch = one foot  
one-quarter inch = one foot  
one-eighth inch = one foot

A  
B  
C  
D  
E  
F  
G

NOTES:

(THIS SHEET ONLY)

- 1 REMOVE HPS HEAT CONNECTIONS TO PRV 120.
- 2 CONNECT PRV 120 TO HPS PROCESS PIPE AND PROVIDE NEW 2½" ISOLATION VALVE AND NEW 2½" AUTOMATIC ON/OFF VALVE TO CONTROL STEAM. CONTROL VALVE SHALL BE NORMALLY CLOSED AND SHALL BE CONTROLLED BY THE TRIDIUM SYSTEM TO OPEN WHENEVER OUTSIDE AIR TEMPERATURE IS 55°F OR LESS FOR 5 MINUTES OR LONGER. REUSE INDICATED VALVE TAG.
- 3 PROVIDE SCHEDULED AUTOMATIC PUMP TRAP PPP-7 AS DETAILED ON SHEET 11-1.04. SEE FLOOR PLAN ON SHEET 11-G-001.
- 4 REPLACING EXISTING 1¼" PRV WITH NEW AS DETAILED AND SCHEDULED.



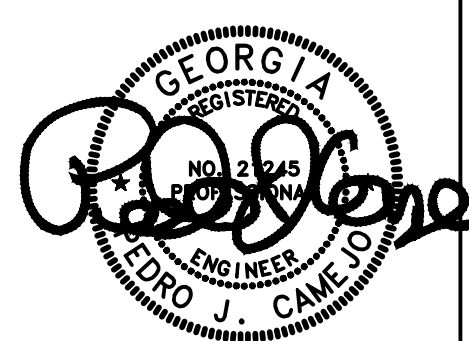
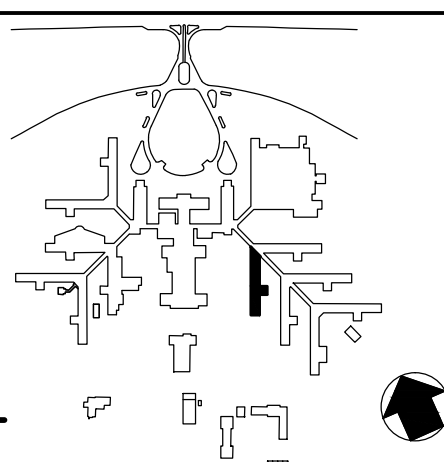
NOTE: FLOOR PLAN SHOWN ON DRAWING 11-G-001

PROCESS FLOW DIAGRAMS AND DETAILS  
SCALE: NONE

Revisions	Date

**AES**  
APPLIED ENGINEERING  
SOLUTIONS  
440 Martin Luther King, Jr. Blvd., Suite 401  
Macon, Georgia 31201  
(478) 314-1270  
www.aes-pe.com

KEY PLAN  
SCALE: NONE



Process Flow Diagrams and Details
FINAL SUBMITTAL

Project Title	STEAM AND CONDENSATE PIPING SYSTEM STUDY
Building Number	11
Location	CARL VINSON VA MEDICAL CENTER DUBLIN, GEORGIA

Date	JUNE 22, 2012
Project No.	557-10-109
Drawing No.	11-G-002
Dwg. 56 Of 87	

Veterans  
Administration