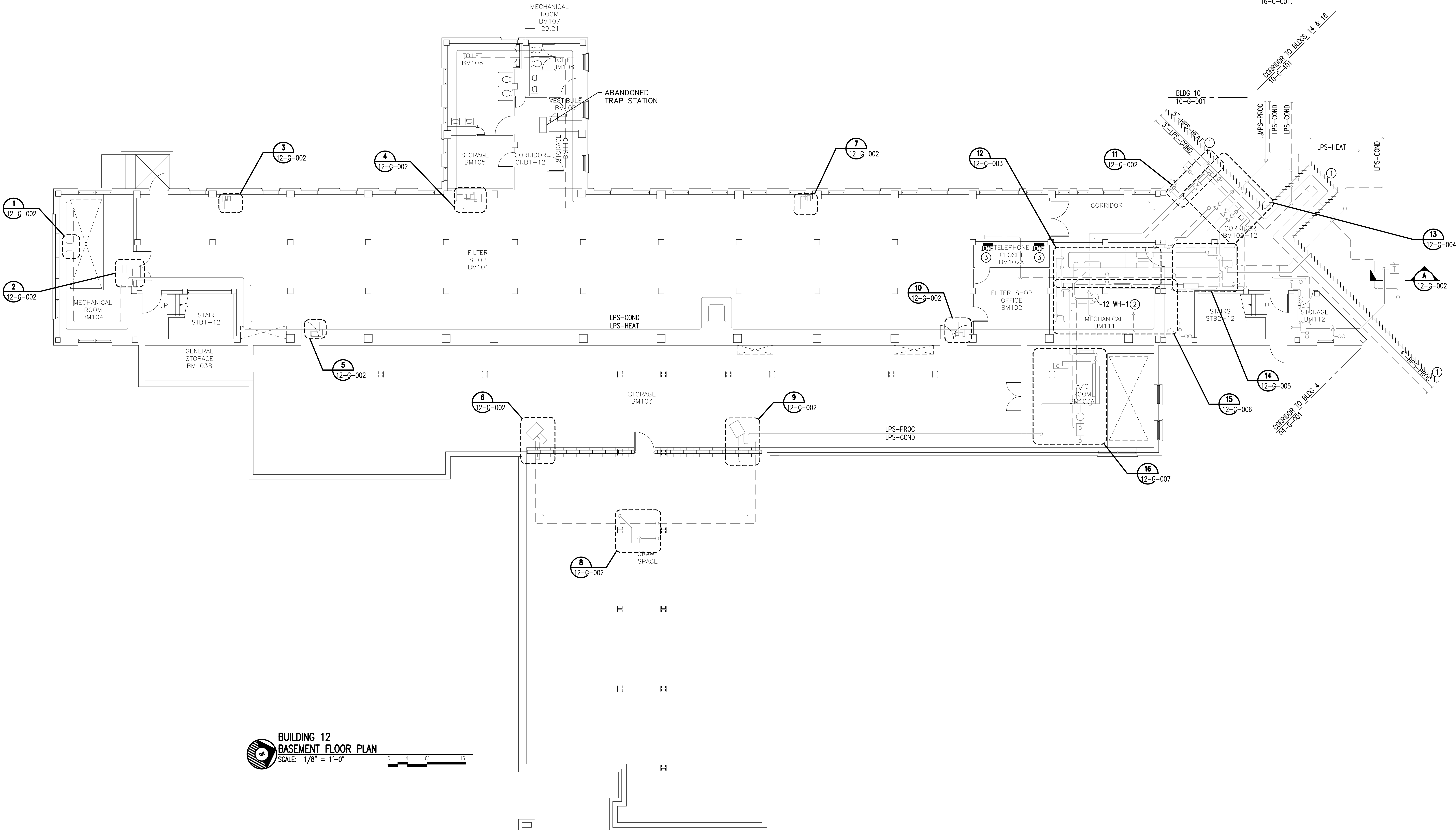


three inches = one foot
one and one-half inches = one foot
one inch = one foot
three-quarters inch = one foot
one-half inch = one foot
three-eighths inch = one foot
one-quarter inch = one foot
one-eighth inch = one foot

- NOTES:**
(THIS SHEET ONLY)
- 1 REMOVE AND HAUL AWAY IN ITS ENTIRETY HPS STEAM PIPING. TURN OVER TO VA COTR ALL VALVES AND STEAM TRAP TAGS THAT ARE NOT REUSED.
 - 2 PROVIDE NEW AUTOMATIC PUMP TRAP FOR 12 WH-1. SEE SHEET 12-G-006.
 - 3 USE THESE TWO NEAREST JACE PANEL TO CONTROL STEAM ON/OFF VALVES SHOWN ON SHEETS 06-G-002, 12-G-004, AND 16-G-001.



**BUILDING 12
BASEMENT FLOOR PLAN**
SCALE: 1/8" = 1'-0"

Revisions	Date

AES
APPLIED ENGINEERING
SOLUTIONS
440 Martin Luther King, Jr. Blvd., Suite 401
Macon, Georgia 31201
(478) 314-1270
www.aes-pe.com

KEY PLAN
SCALE: NONE

GEORGIA
REGISTERED PROFESSIONAL ENGINEER
EDDIE J. CANEJO
No. 12569

Drawing Title
BASEMENT FLOOR PLAN
FINAL SUBMITTAL

Project Title
STEAM AND CONDENSATE
PIPING SYSTEM STUDY

Building Number
12
Location
CARL VINSON VA MEDICAL CENTER
DUBLIN, GEORGIA

Date
JUNE 22, 2012
Project No.
557-10-109
Drawing No.
12-G-001
Dwg. 59 Of 87

Veterans
Administration