

1
2
3
4
5
6
7
8
9

A
three inches = one foot

B
one and one-half inches = one foot

C
one inch = one foot

D
three-quarters inch = one foot

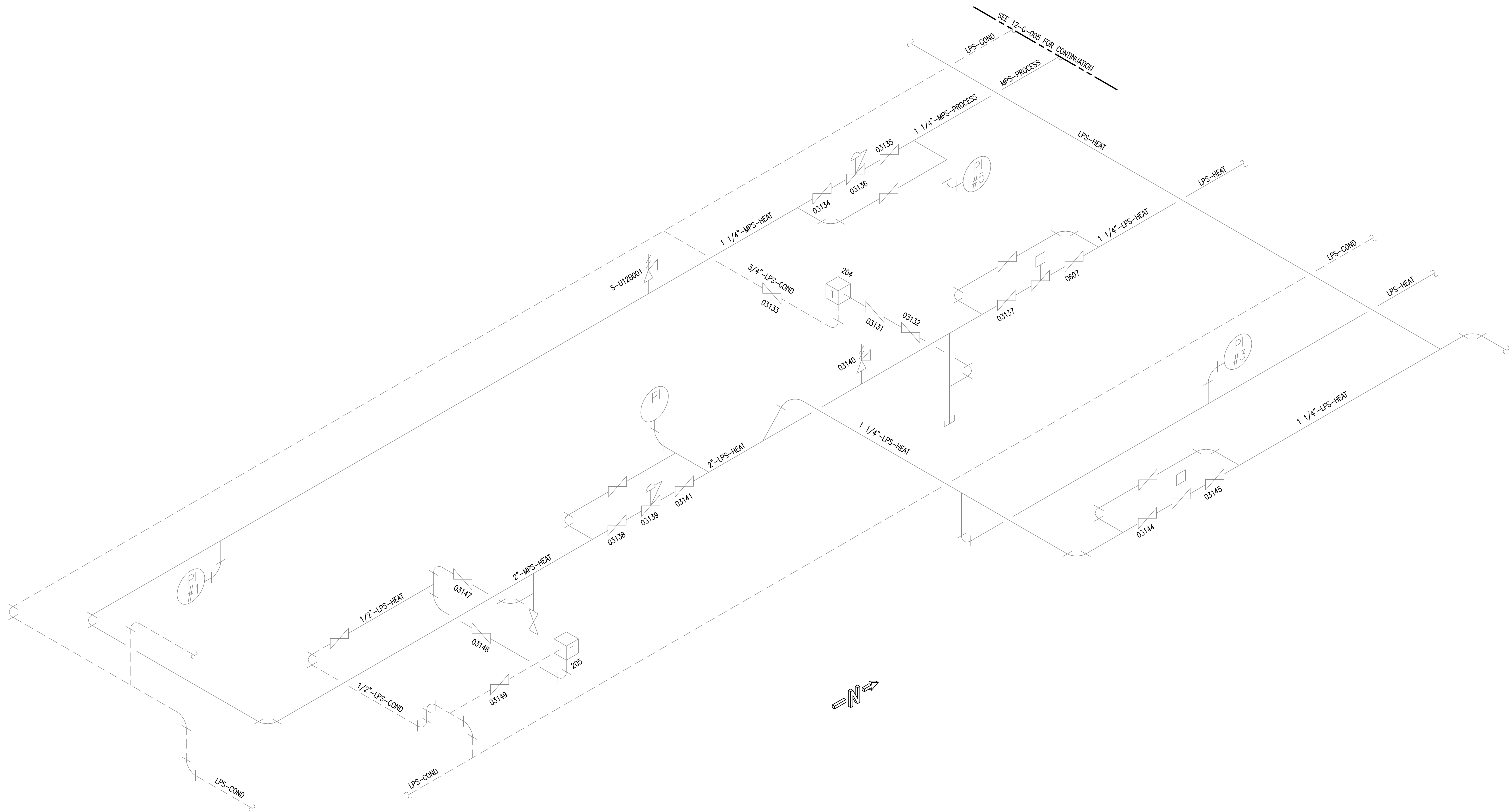
E
one-half inch = one foot

F
three-eighths inch = one foot


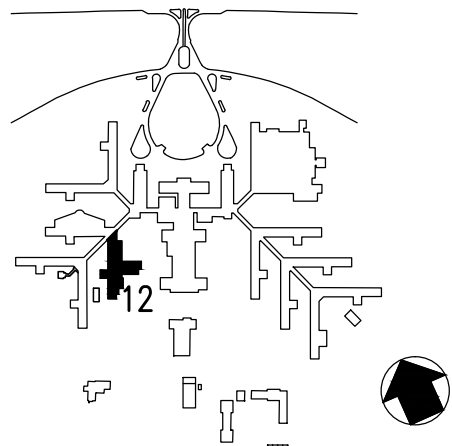

G
one-quarter inch = one foot

H
one-eighth inch = one foot

DRAWING NOTES:
A. NO WORK REQUIRED THIS AREA. SHEET INCLUDED FOR COMPLETENESS OF RECORD DRAWINGS.



DETAIL 12
SCALE: NONE

Revisions	Date	 APPLIED ENGINEERING SOLUTIONS 440 Martin Luther King, Jr. Blvd., Suite 401 Macon, Georgia 31201 (478) 314-1270 www.aes-pe.com			Drawing Title	Project Title			Date
					DETAIL	STEAM AND CONDENSATE PIPING SYSTEM STUDY			JUNE 22, 2012
					Building Number	Checked	Drawn	Drawing No.	Veterans Administration
					12	PJC	JSW	12-G-003	
					Location			Dwg. 61 of 87	
					CARL VINSON VA MEDICAL CENTER DUBLIN, GEORGIA				

VA FORM 08-6231A, MAR 1984

U.S. GOVERNMENT PRINTING OFFICE: 1984-440-467