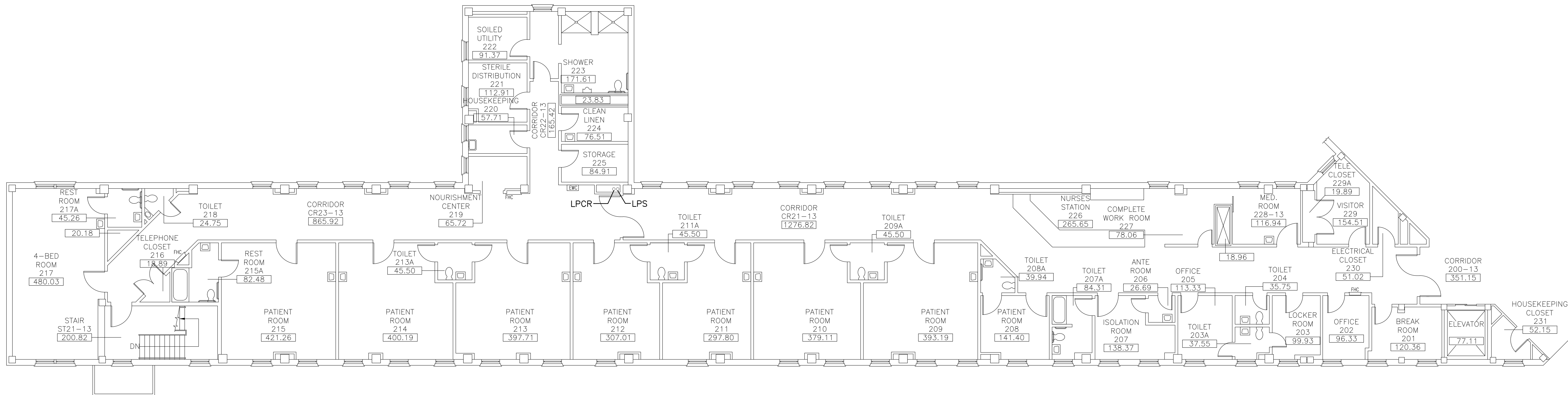


three inches = one foot
one and one-half inches = one foot
one inch = one foot
three-quarters inch = one foot
one-half inch = one foot
three-eighths inch = one foot
one-quarter inch = one foot
one-eighth inch = one foot

DRAWING NOTES:
A. NO WORK REQUIRED THIS AREA. SHEET INCLUDED FOR COMPLETENESS OF RECORD DRAWINGS.



**BUILDING 13
SECOND FLOOR PLAN**
SCALE: 1/8" = 1'-0"

Revisions	Date

AES
APPLIED ENGINEERING SOLUTIONS
440 Martin Luther King, Jr. Blvd., Suite 401
Macon, Georgia 31201
(478) 314-1270
www.aes-pe.com

KEY PLAN
SCALE: NONE



Drawing Title SECOND FLOOR PLAN		Project Title STEAM AND CONDENSATE PIPING SYSTEM STUDY		Date JUNE 22, 2012
Building Number 13		Checked PJC	Drawn JSW	Project No. 557-10-109
FINAL SUBMITTAL		Location CARL VINSON VA MEDICAL CENTER DUBLIN, GEORGIA		Drawing No. 13-G-201 Dwg. 68 Of 87

Veterans Administration