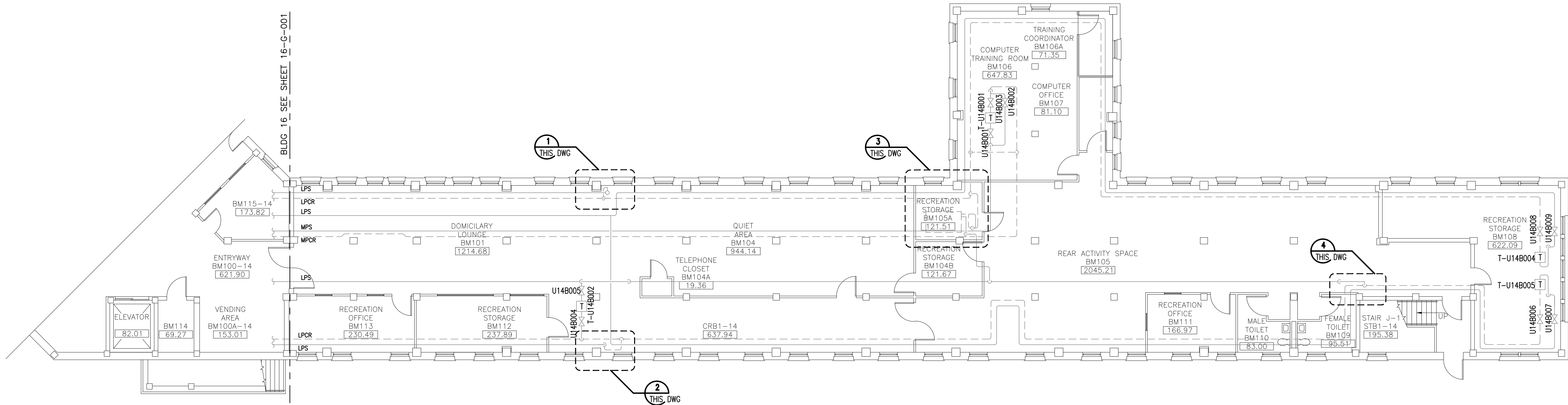
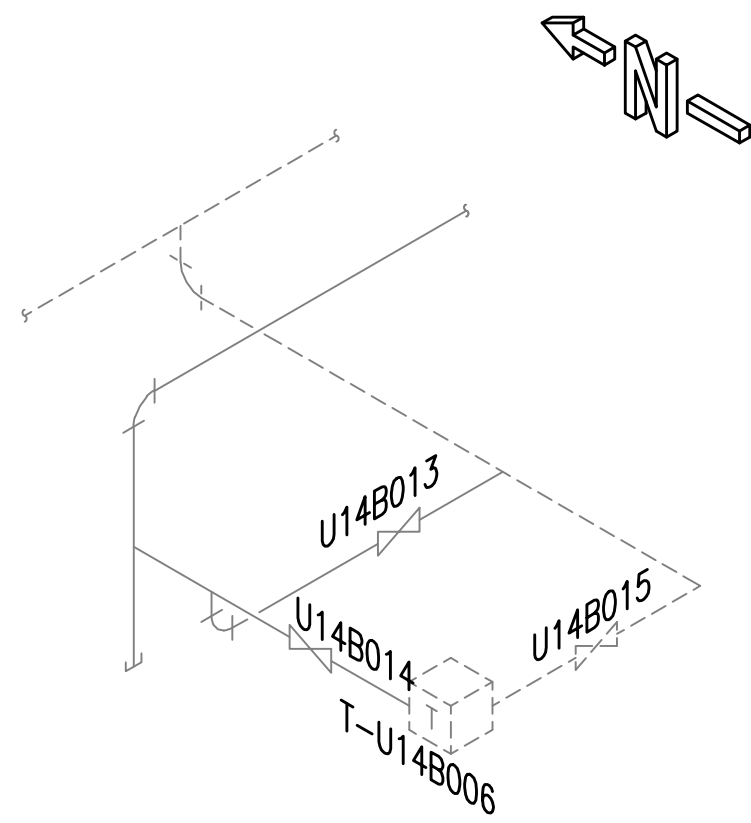


three inches = one foot
one and one-half inches = one foot
one inch = one foot
three-quarters inch = one foot
one-half inch = one foot
three-eighths inch = one foot
one-quarter inch = one foot
one-eighth inch = one foot

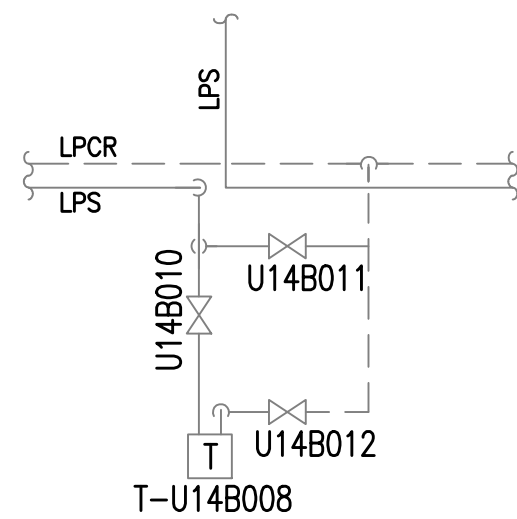
DRAWING NOTES:
A. NO WORK REQUIRED THIS AREA. SHEET INCLUDED FOR COMPLETENESS OF RECORD DRAWINGS.



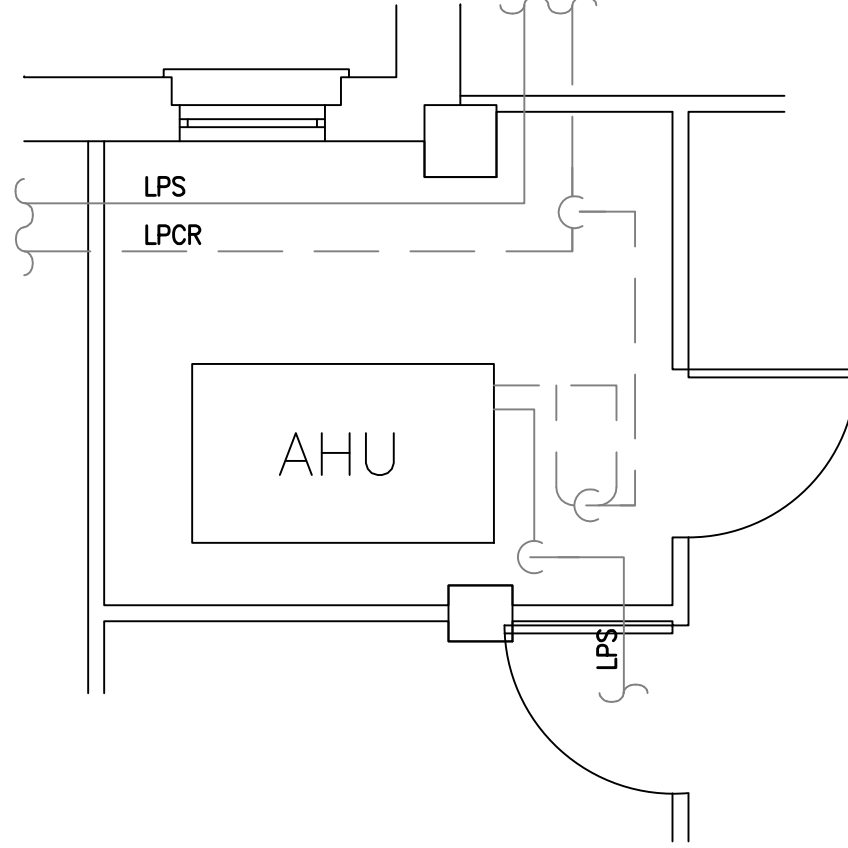
**BUILDING 14
BASEMENT FLOOR PLAN**
SCALE: 1/8" = 1'-0"



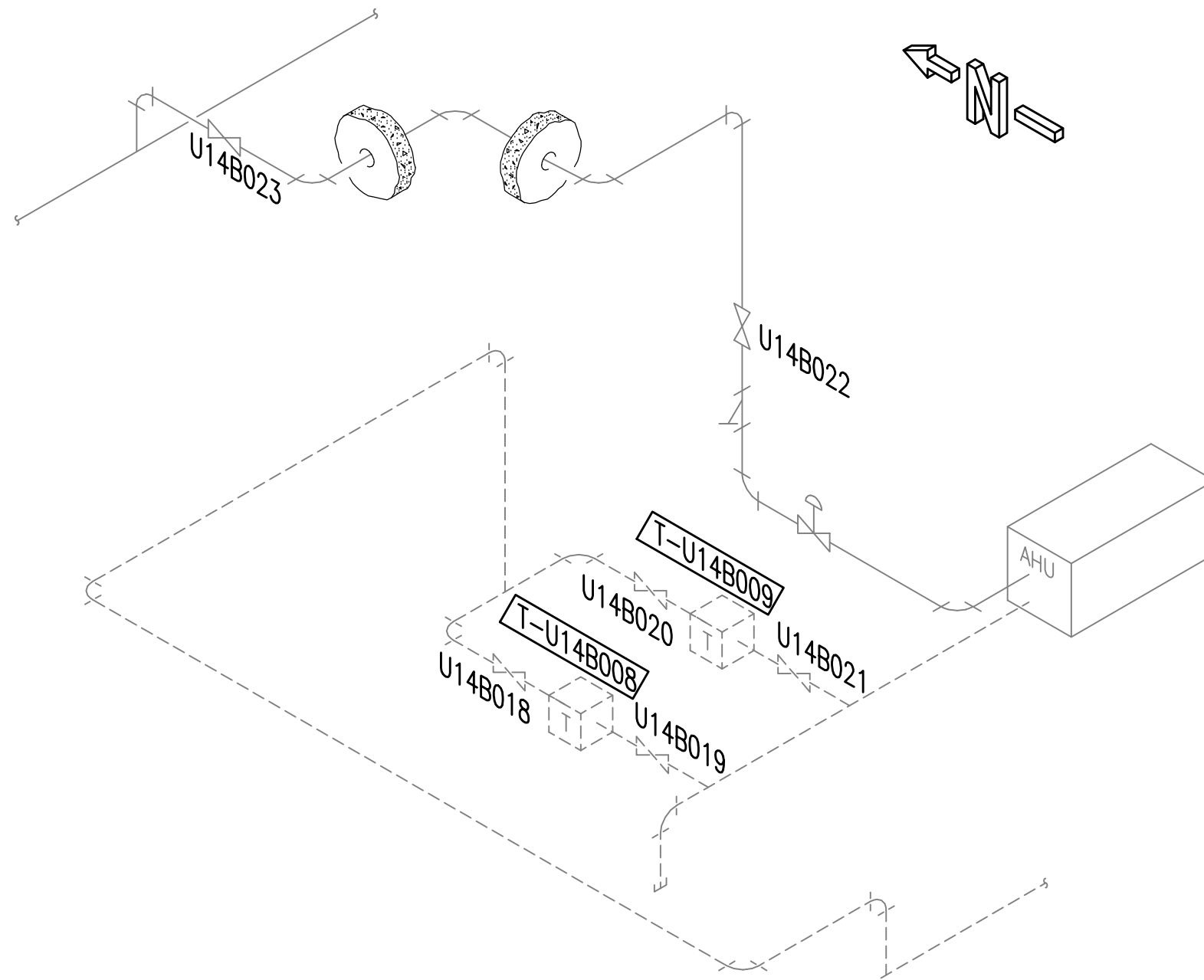
DETAIL 1
SCALE: NONE



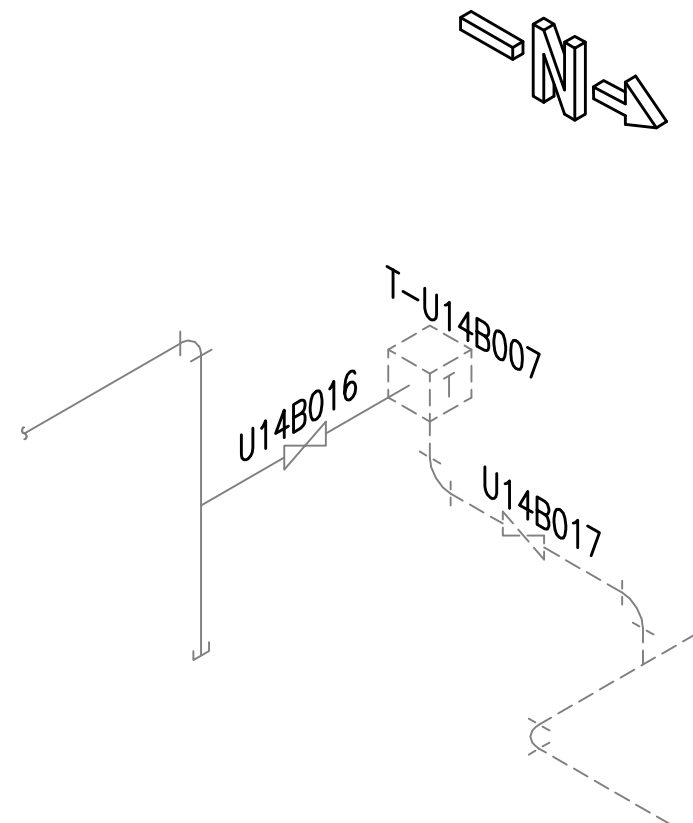
DETAIL 2
SCALE: NONE



DETAIL 3
SCALE: NONE



DETAIL 3 ISO
SCALE: NONE



DETAIL 4
SCALE: NONE

Revisions	Date

AES
APPLIED ENGINEERING
SOLUTIONS
440 Martin Luther King, Jr. Blvd., Suite 401
Macon, Georgia 31201
(478) 314-1270
www.aes-pe.com

KEY PLAN
SCALE: NONE



Drawing Title
BASEMENT FLOOR PLAN AND DETAILS
FINAL SUBMITTAL

Project Title
STEAM AND CONDENSATE PIPING SYSTEM STUDY
Building Number
14
Location
CARL VINSON VA MEDICAL CENTER DUBLIN, GEORGIA

Date
JUNE 22, 2012
Project No.
557-10-109
Drawing No.
14-G-001
Dwg. Of
87

Veterans
Administration