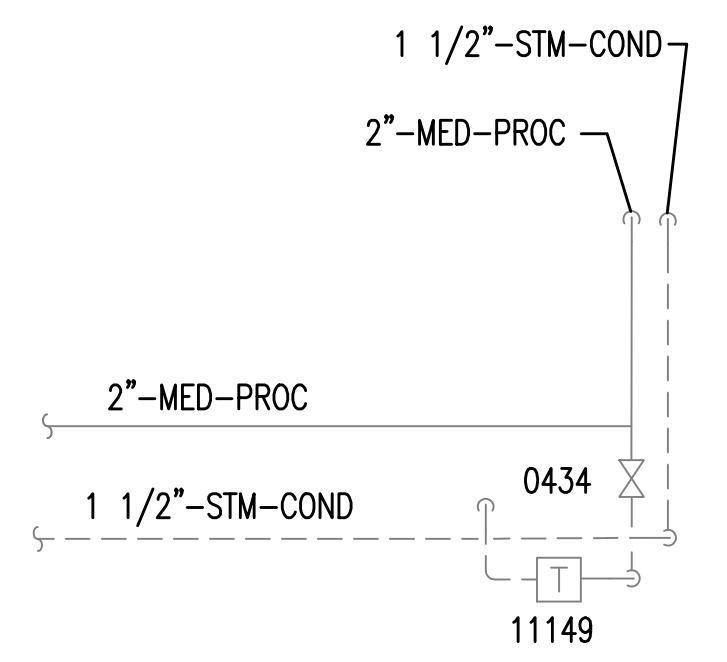
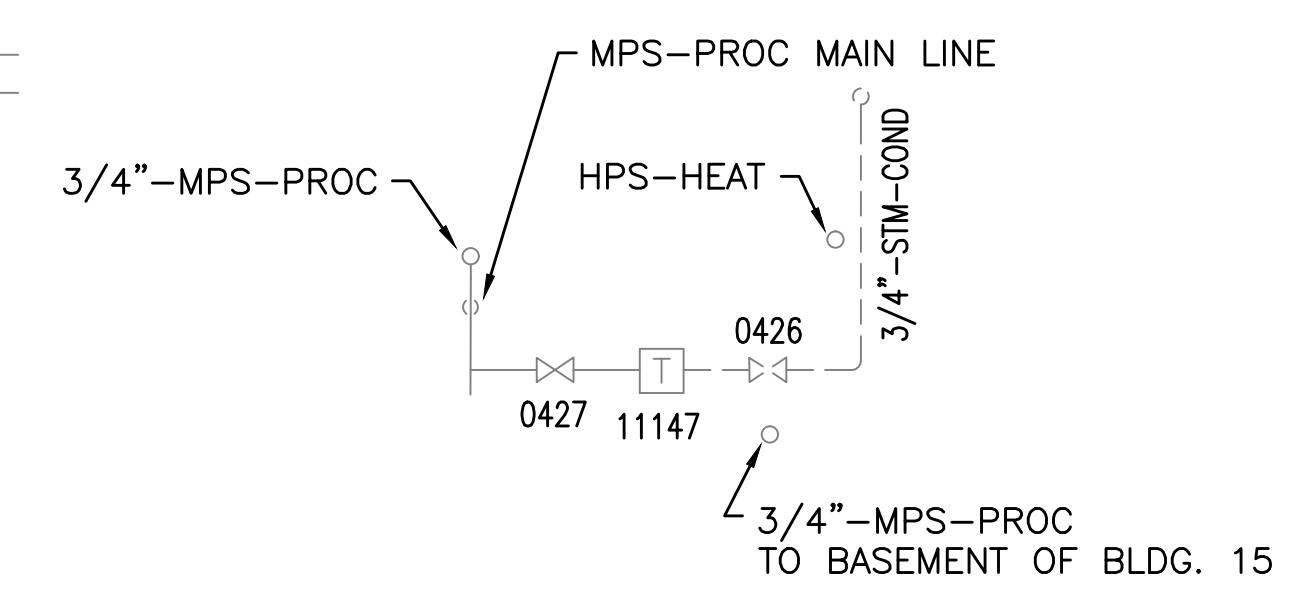


NOTES:
(THIS SHEET ONLY)

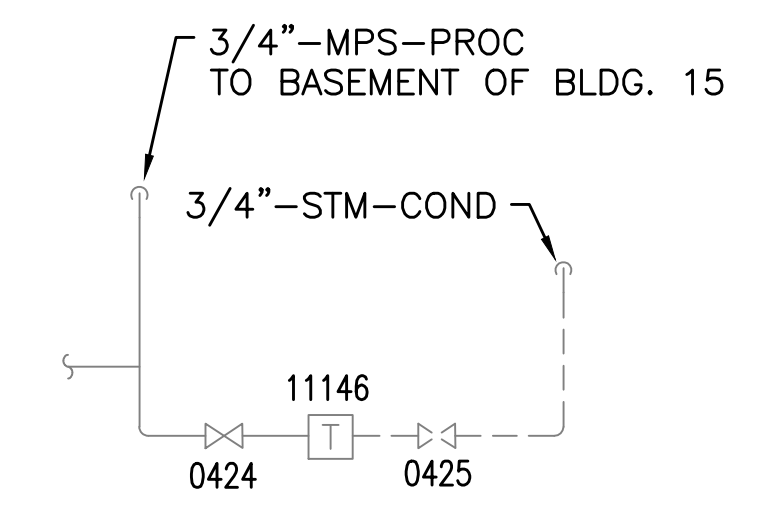
- 1 REMOVE AND HAUL AWAY IN ITS ENTIRETY HPS STEAM PIPING, TURN OVER TO VA COTR ALL VALVES AND STEAM TRAP TAGS THAT ARE NOT REUSED.
- 2 PROVIDE NEW GATE VALVE AND NEW NORMALLY CLOSED ELECTRICAL ACTUATED ON/OFF VALVE. AUTOMATIC VALVE SHALL BE CONTROLLED BY TRITIUM CONTROL SYSTEM AND SHALL OPEN WHEN WHEN OUTSIDE AIR TEMPERATURE IS 55F OR BELOW (ADJUSTABLE) FOR 5 MINUTES OR LONGER. REUSE INDICATED VALVE TAGS.
- 3 PROVIDE NEW INDICATED PIPE CONNECTION FROM MPS-PROCESS STEAM TO HEATING SYSTEM.
- 4 REPLACE EXISTING HEATING ONLY PRESSURE REDUCING STATION AS SCHEDULED AND DETAILLED.



SECTION A
SCALE: NONE



SECTION B
SCALE: NONE



SECTION C
SCALE: NONE

BUILDING 15
ENLARGED BASEMENT PLAN
SCALE: 1/2" = 1'-0"

[illegible]