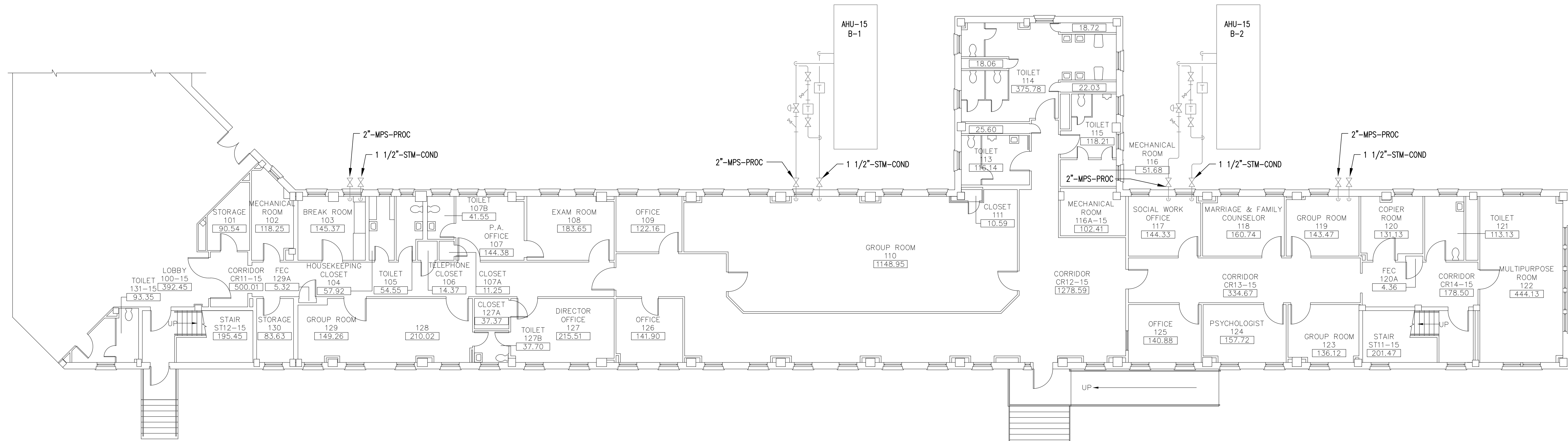


three eighths inch = one foot
one quarter inch = one foot
one eighth inch = one foot
three eighths inch = one foot
one quarter inch = one foot
one eighth inch = one foot
one half inch = one foot
one half inch = one foot
three quarters inch = one foot
one inch = one foot
one and one half inches = one foot
three inches = one foot
A

DRAWING NOTES:
A. NO WORK REQUIRED THIS AREA. SHEET INCLUDED FOR COMPLETENESS OF RECORD DRAWINGS.

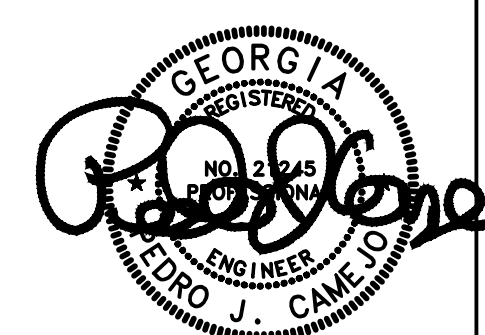
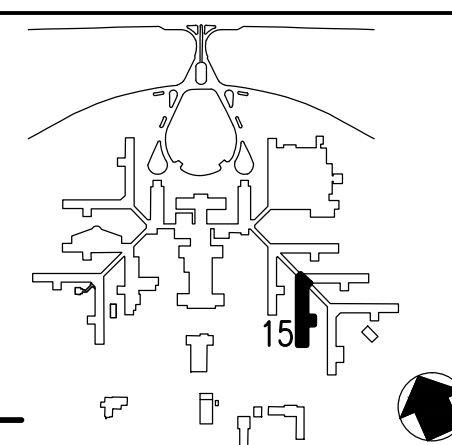


BUILDING 15
FIRST FLOOR PLAN
SCALE: 1/8" = 1'-0"
0 4' 8' 16'

Revisions	Date

AES
APPLIED ENGINEERING SOLUTIONS
440 Martin Luther King, Jr. Blvd., Suite 401
Macon, Georgia 31201
(478) 314-1270
www.aes-pe.com

KEY PLAN
SCALE: NONE



Drawing Title		Project Title		Date
FIRST FLOOR PLAN		STEAM AND CONDENSATE PIPING SYSTEM STUDY		JUNE 22, 2012
Building Number		Checked	Drawn	Project No.
15		PJC	JSW	557-10-109
Location		Drawing No.		Date
CARL VINSON VA MEDICAL CENTER DUBLIN, GEORGIA		15-G-101		JUNE 22, 2012
Dwg. 74 Of 87				

Veterans Administration