

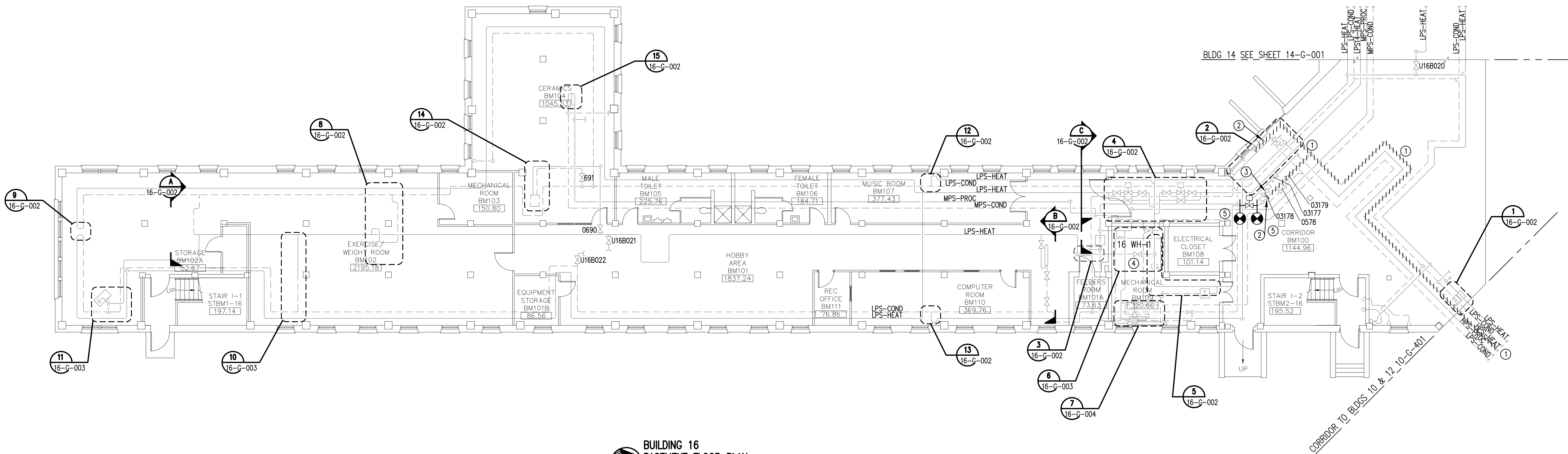
three inches = one foot  
one and one-half inches = one foot  
one inch = one foot  
three-quarters inch = one foot  
one-half inch = one foot  
one-quarter inch = one foot  
one-eighth inch = one foot

A  
B  
C  
D  
E  
F  
G

NOTES:

(THIS SHEET ONLY)

- 1 REMOVE AND HAUL AWAY IN ITS ENTIRETY HPS HEATING STEAM PIPING. TURN OVER TO VA CONTR ALL VALVES AND STEAM TRAP TAGS THAT ARE NOT REUSED.
- 2 CAP REMOVED BRANCH AS CLOSE TO REMAINING PIPE AS POSSIBLE.
- 3 ENSURE EXISTING CROSS OVER VALVE IS FULLY OPEN.
- 4 PROVIDE NEW AUTOMATIC PUMP TRAP FOR 16 WH-1. SEE SHEET 16-G-004.
- 5 IN EXISTING CROSS CONNECTION PIPING BETWEEN HEATING STEAM TO BUILDING 16 AND PROCESS STEAM TO BUILDING 16 PROVIDE NEW 2" ELECTRICALLY ACTUATED VALVE CONNECT TO TRIDIUM CONTROL SYSTEM TO OPEN VALVE WHEN OUTSIDE AIR TEMPERATURE IS BELOW 55°F FOR 5 MINUTES OR LONGER.

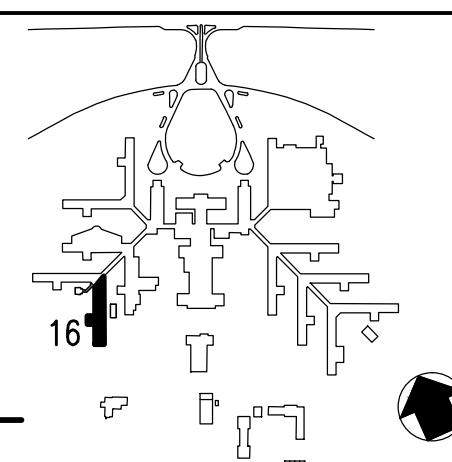


**BUILDING 16  
BASEMENT FLOOR PLAN**  
SCALE: 1/8" = 1'-0"

Revisions	Date

**AES**  
APPLIED ENGINEERING  
SOLUTIONS  
440 Martin Luther King, Jr. Blvd., Suite 401  
Macon, Georgia 31201  
(478) 314-1270  
www.aes-pe.com

**KEY PLAN**  
SCALE: NONE



Drawing Title  BASEMENT FLOOR PLAN		Project Title  STEAM AND CONDENSATE PIPING SYSTEM STUDY			Date JUNE 22, 2012
					Project No. 557-10-109
		Building Number 16	Checked PJC	Drawn JSW	DRAWING NO. 16-G-001
FINAL SUBMITTAL		Location CARL VINSON VA MEDICAL CENTER DUBLIN, GEORGIA			Dwg. 75 of 87

**Veterans  
Administration**