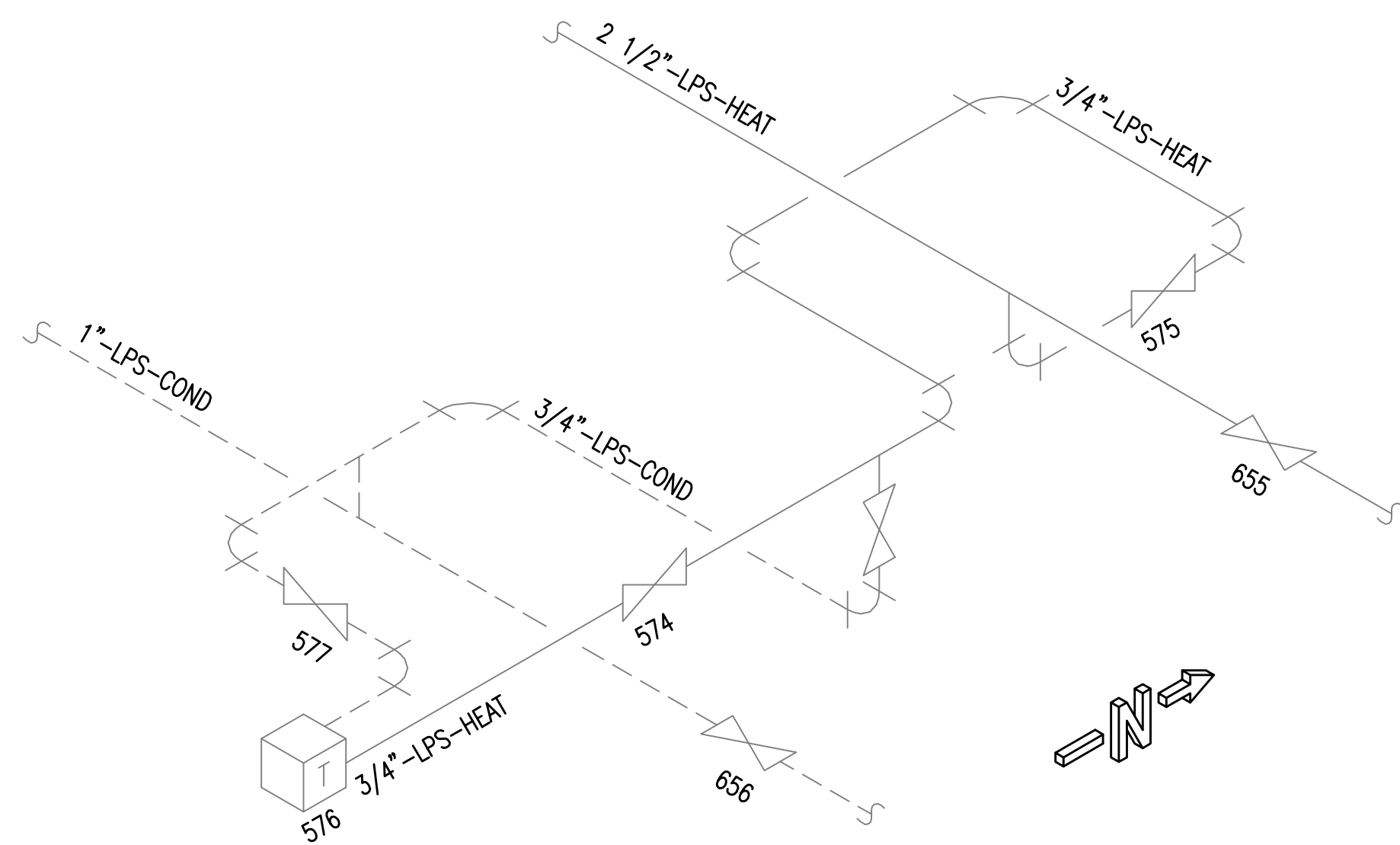
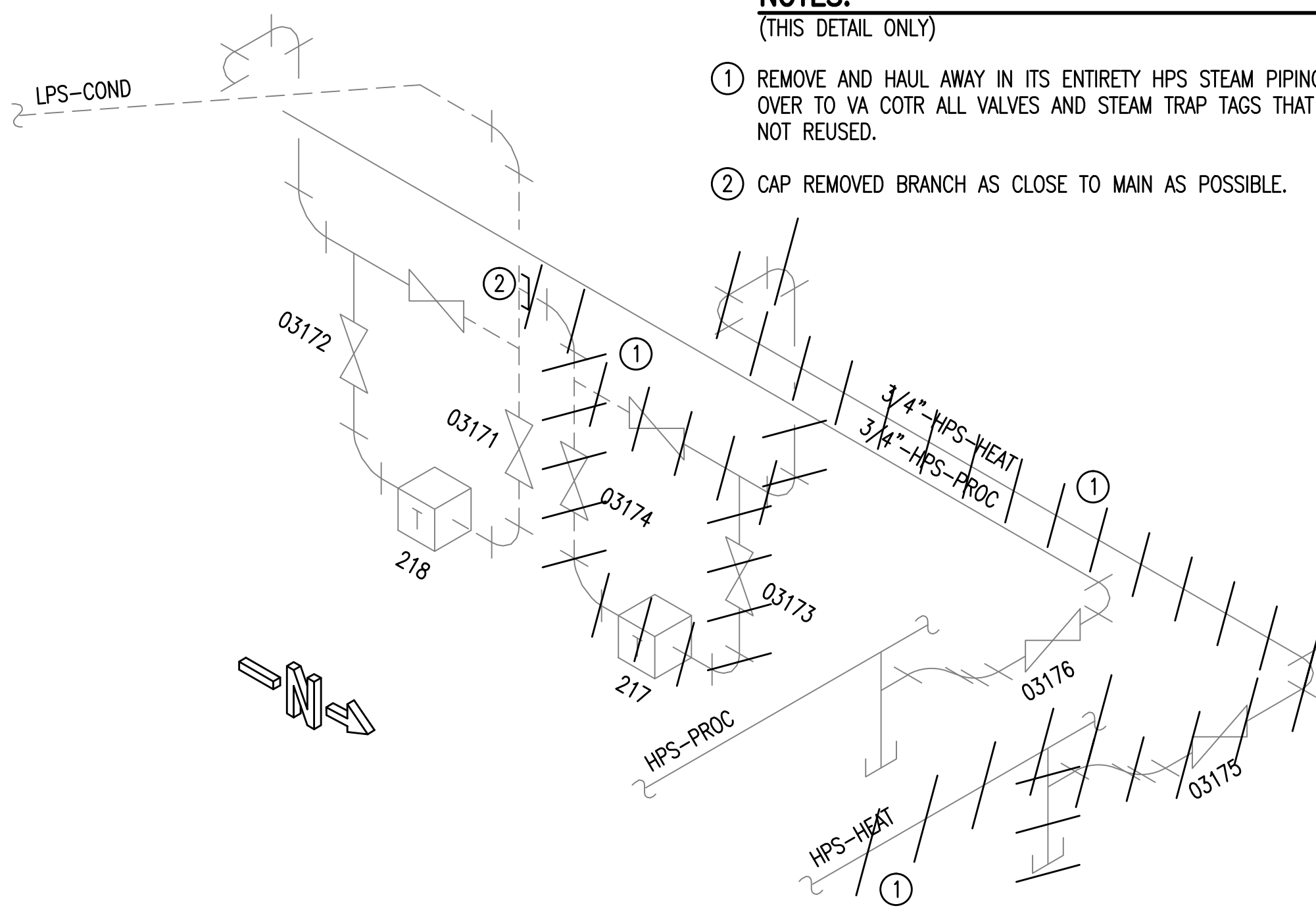


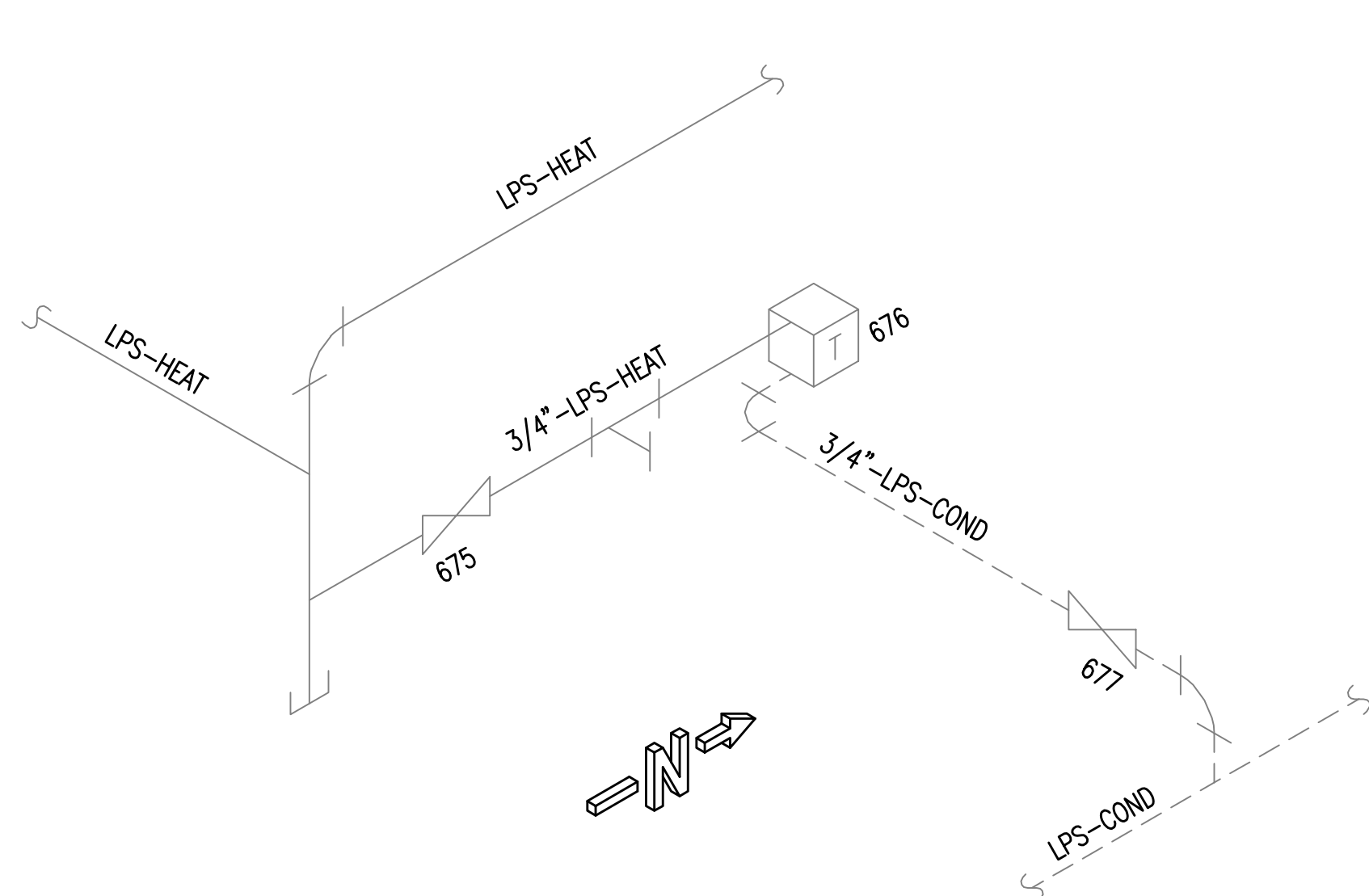
three inches = one foot
one and one-half inches = one foot
one inch = one foot
three-quarters inch = one foot
one-half inch = one foot
three-eighths inch = one foot
one-quarter inch = one foot
one-eighth inch = one foot



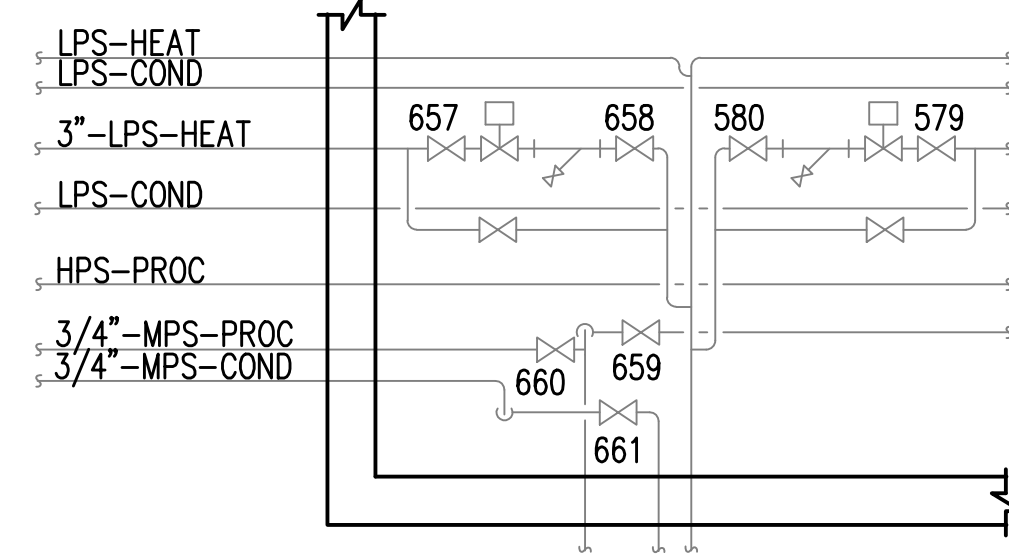
DETAIL 1
SCALE: NONE



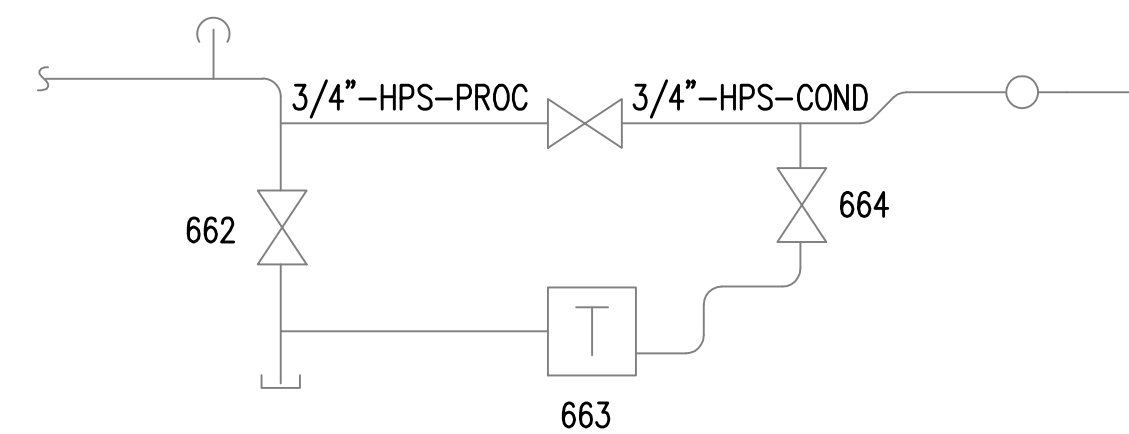
DETAIL 2
SCALE: NONE



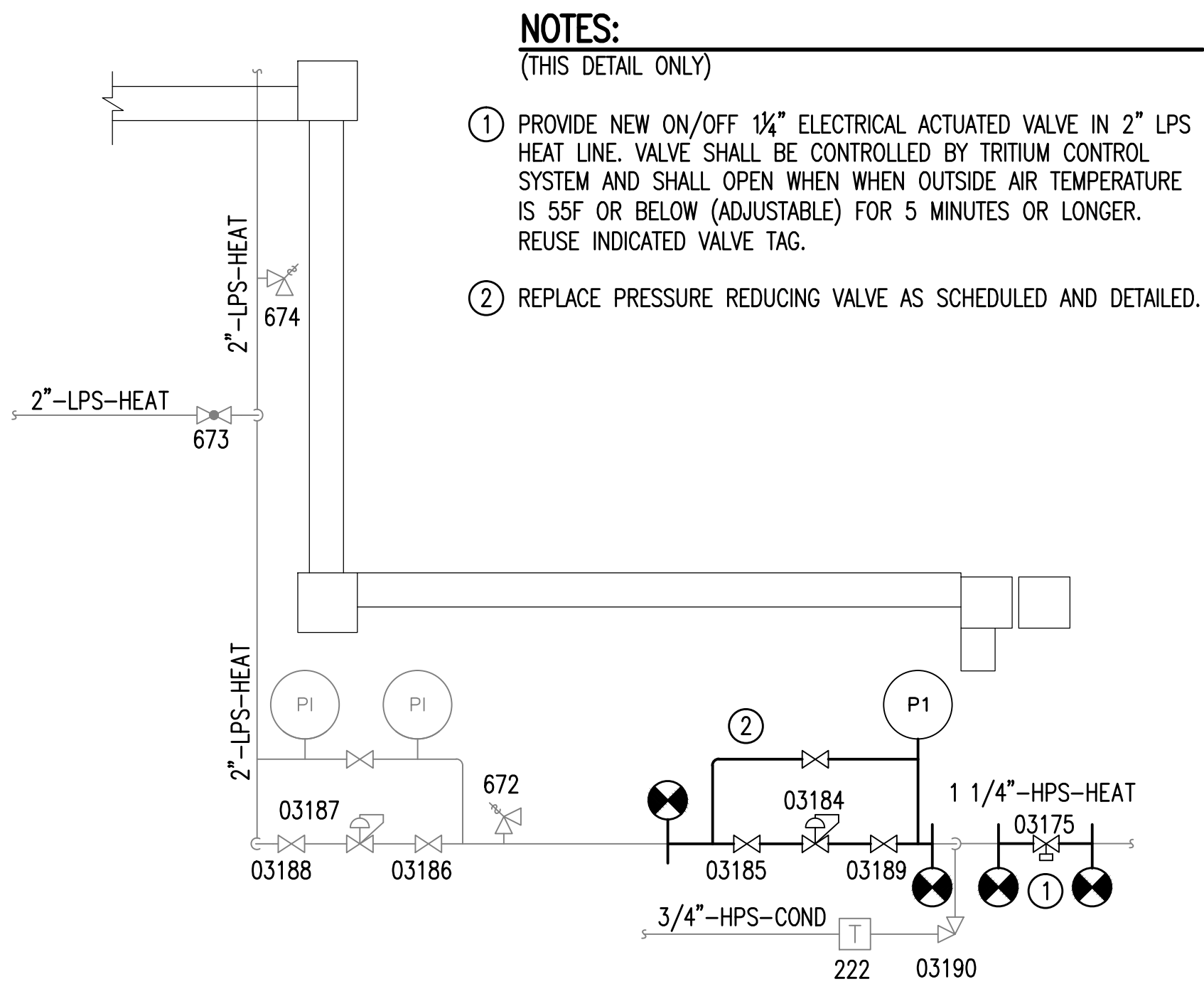
DETAIL 3
SCALE: NONE



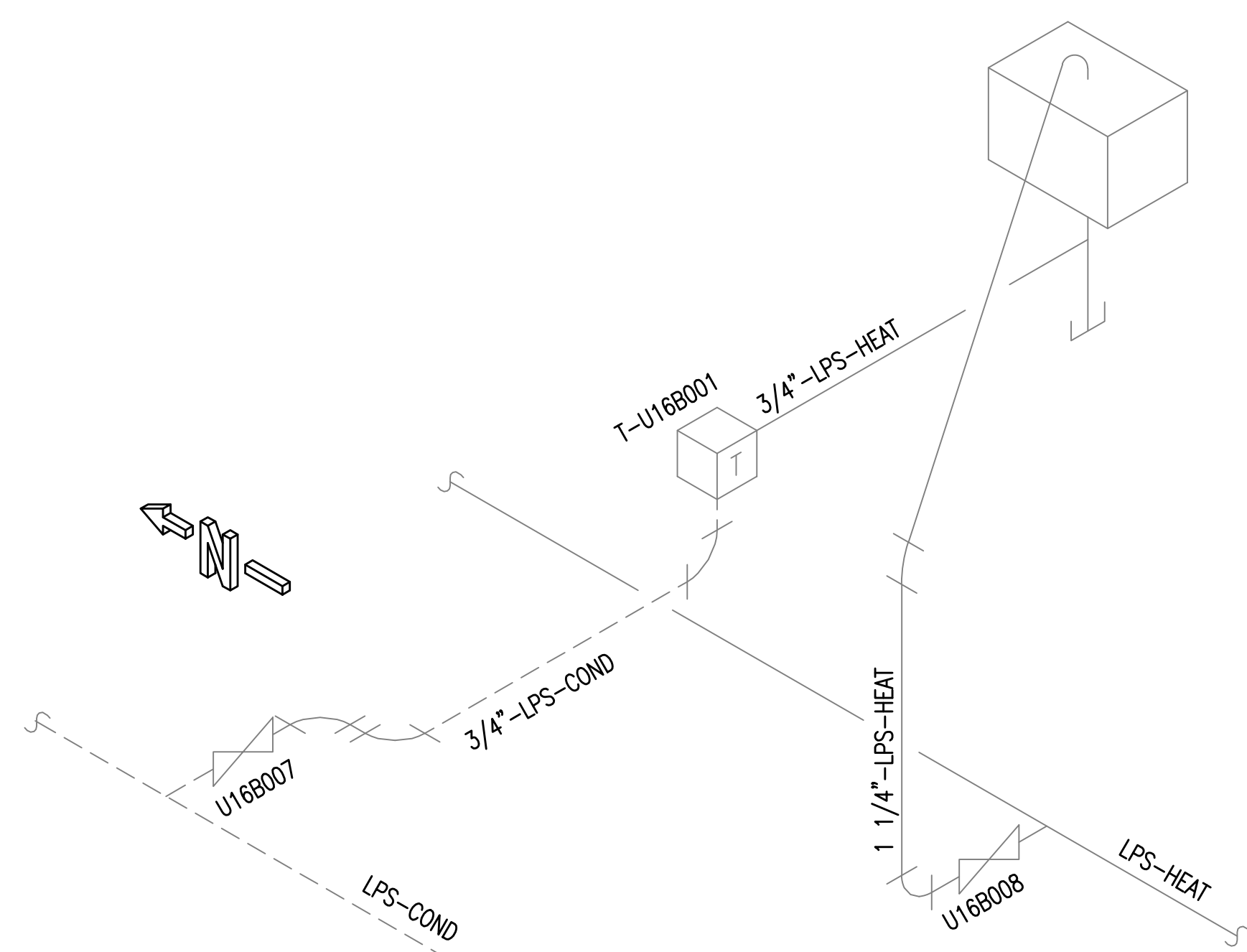
DETAIL 4
SCALE: NONE



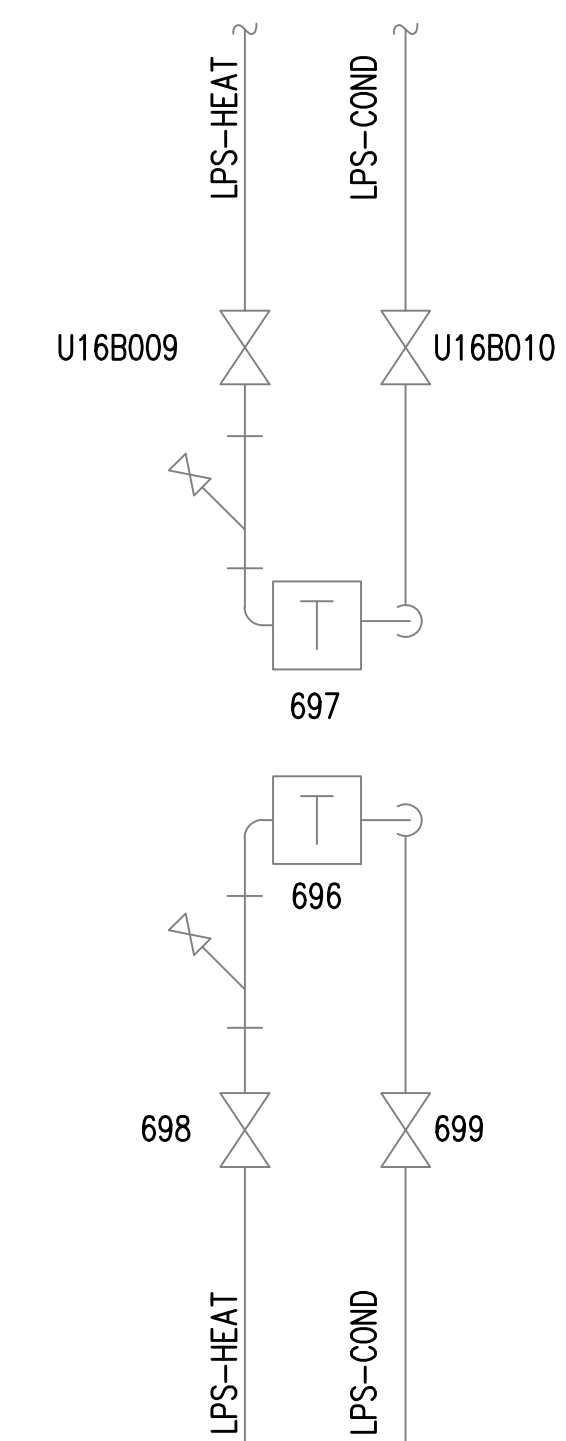
SECTION C
SCALE: NONE



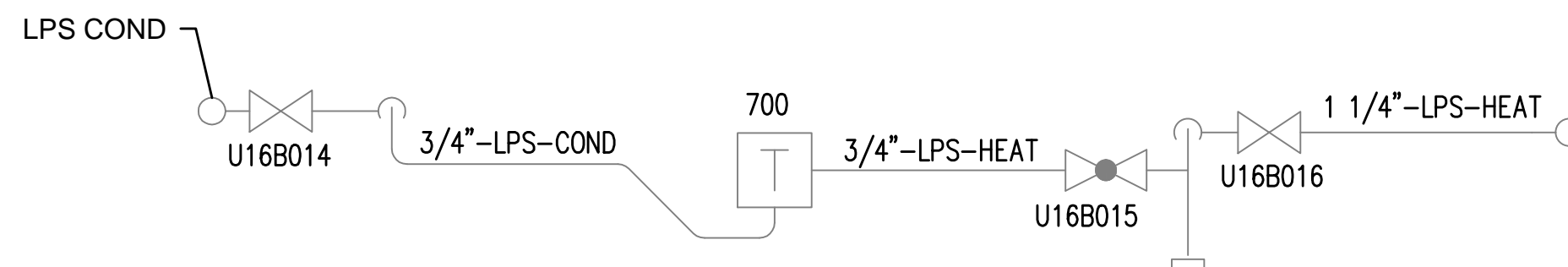
DETAIL 5
SCALE: NONE



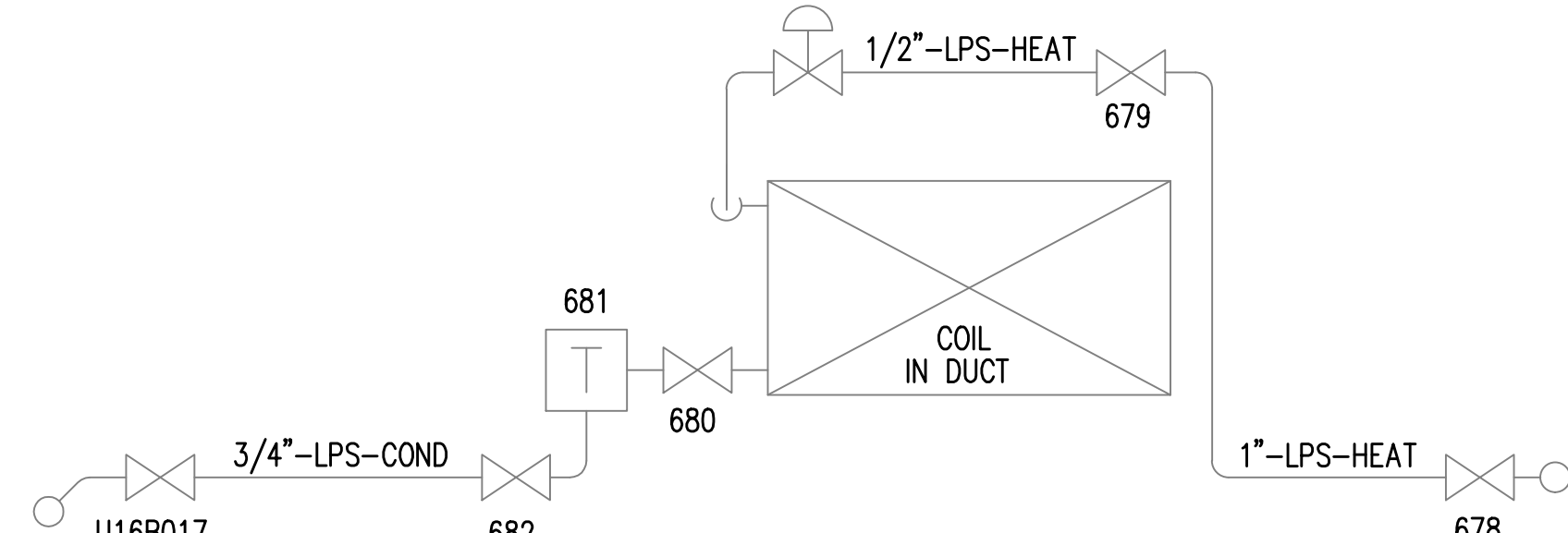
DETAIL 8
SCALE: NONE



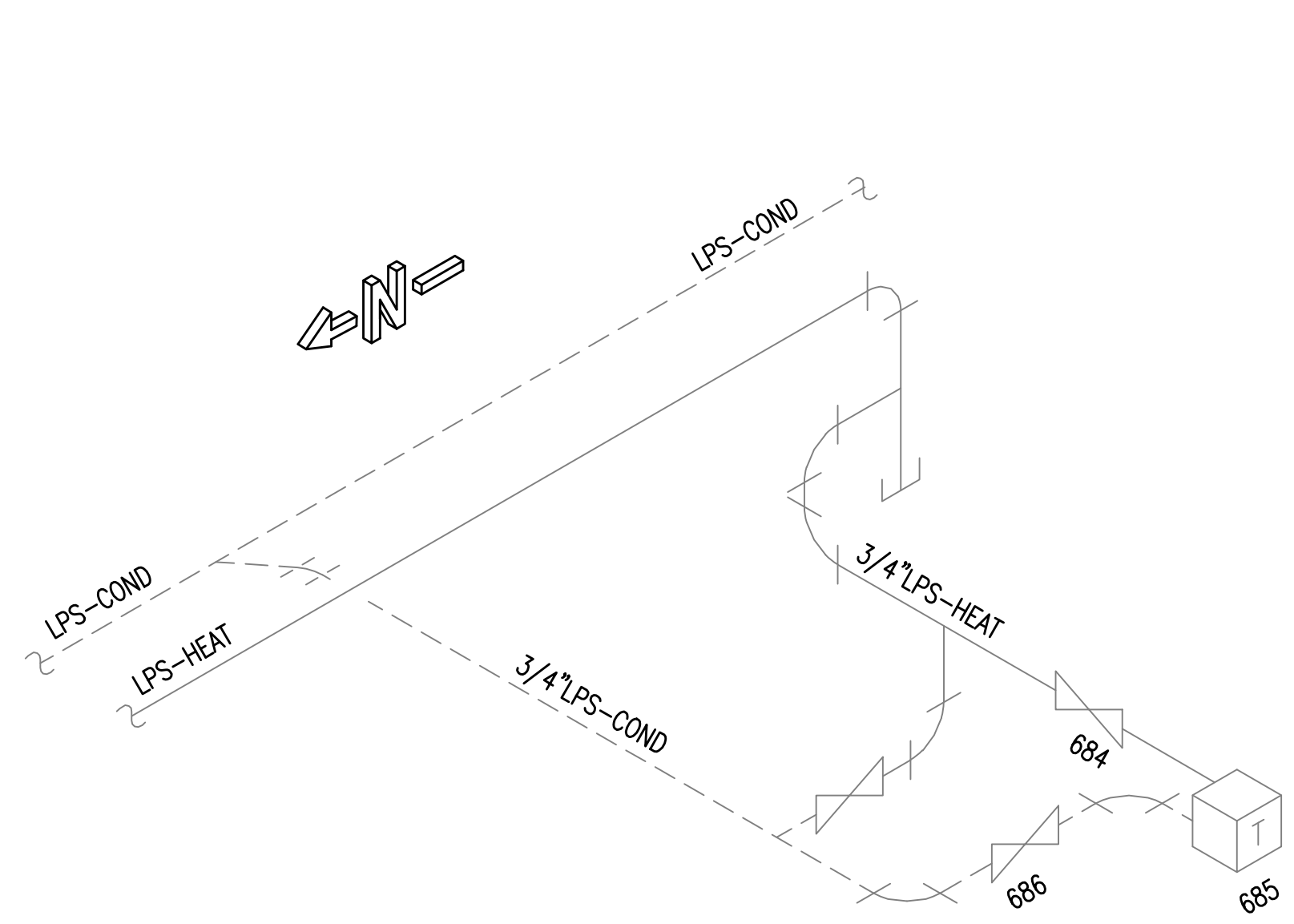
DETAIL 9
SCALE: NONE



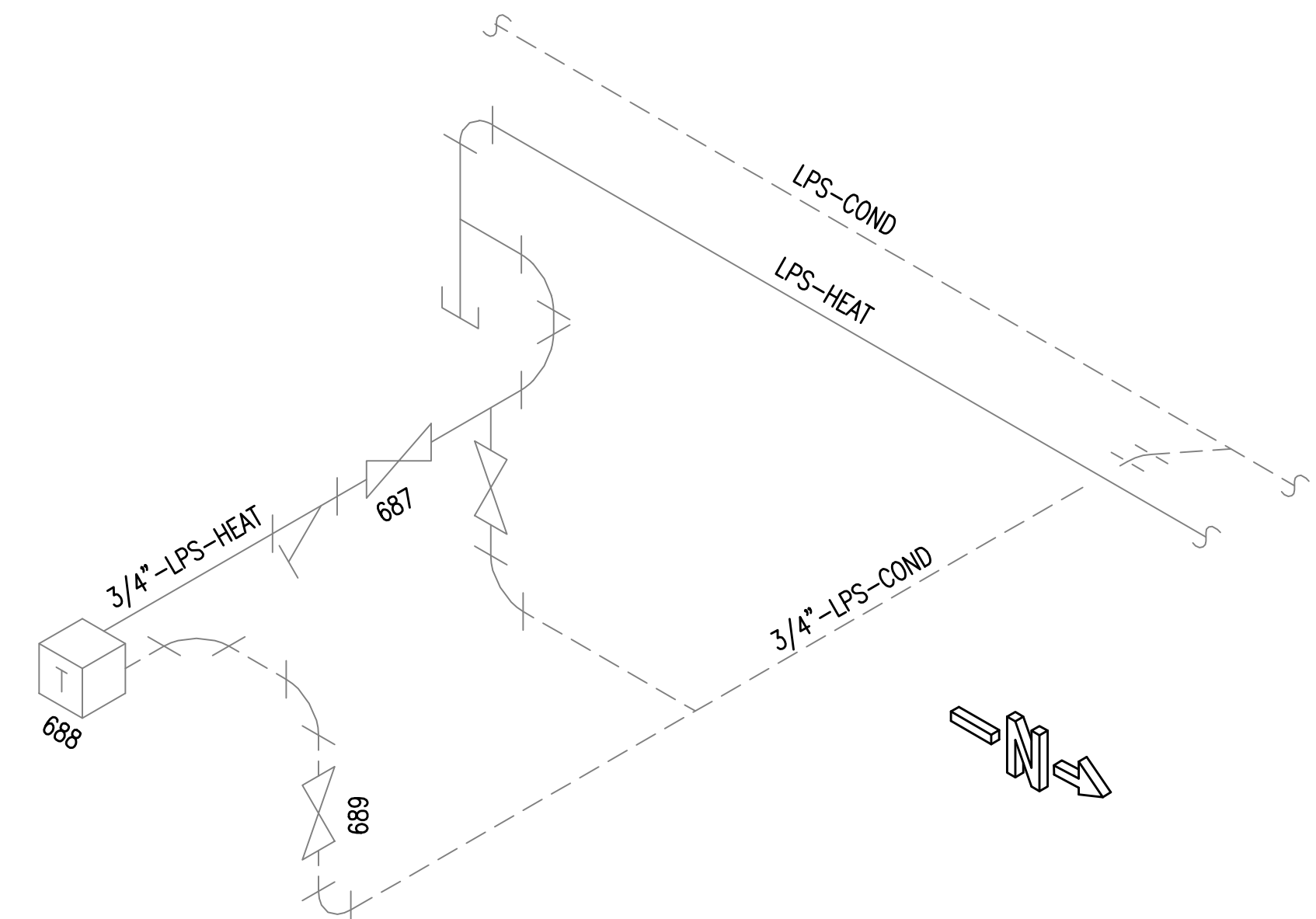
SECTION A
SCALE: NONE



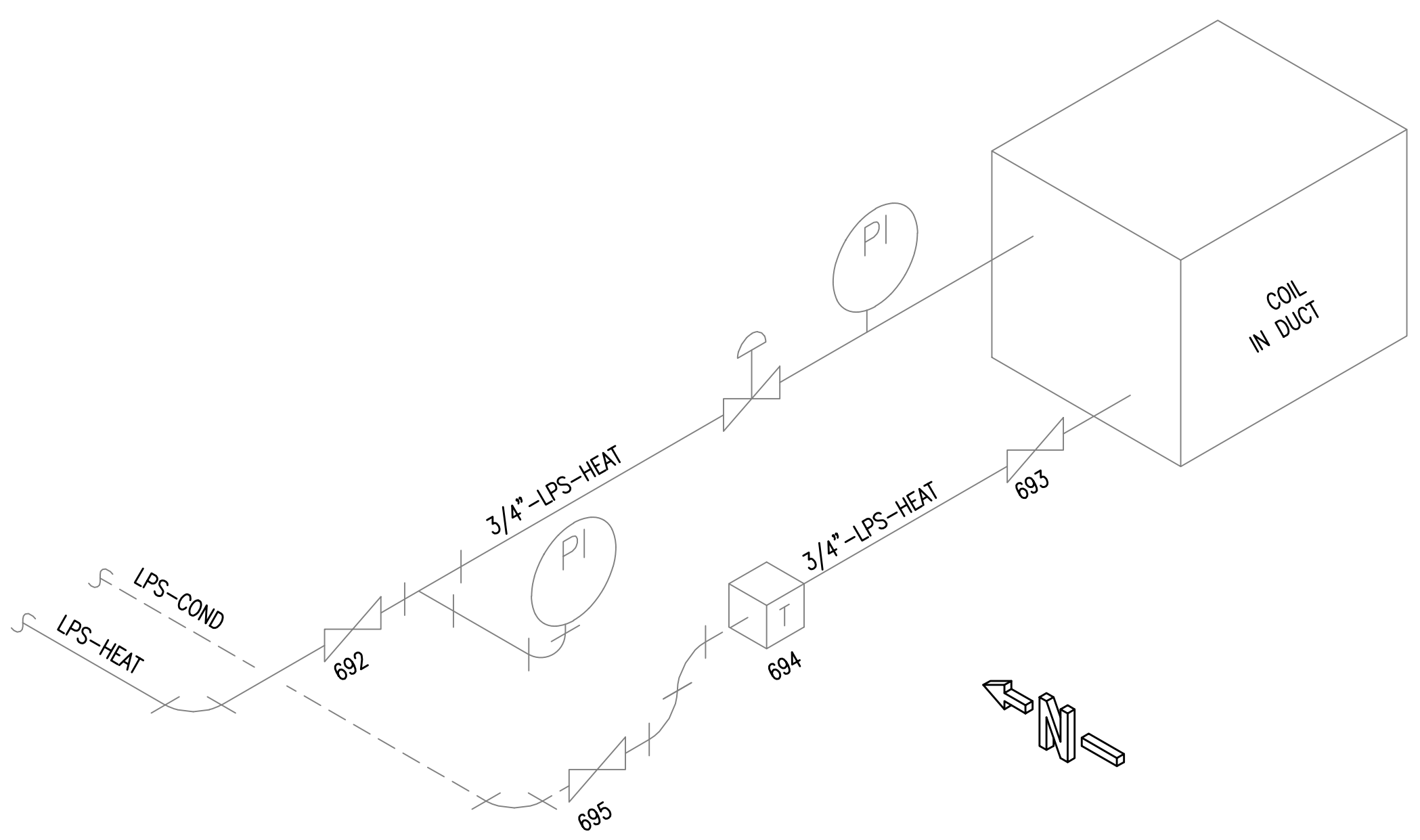
SECTION B
SCALE: NONE



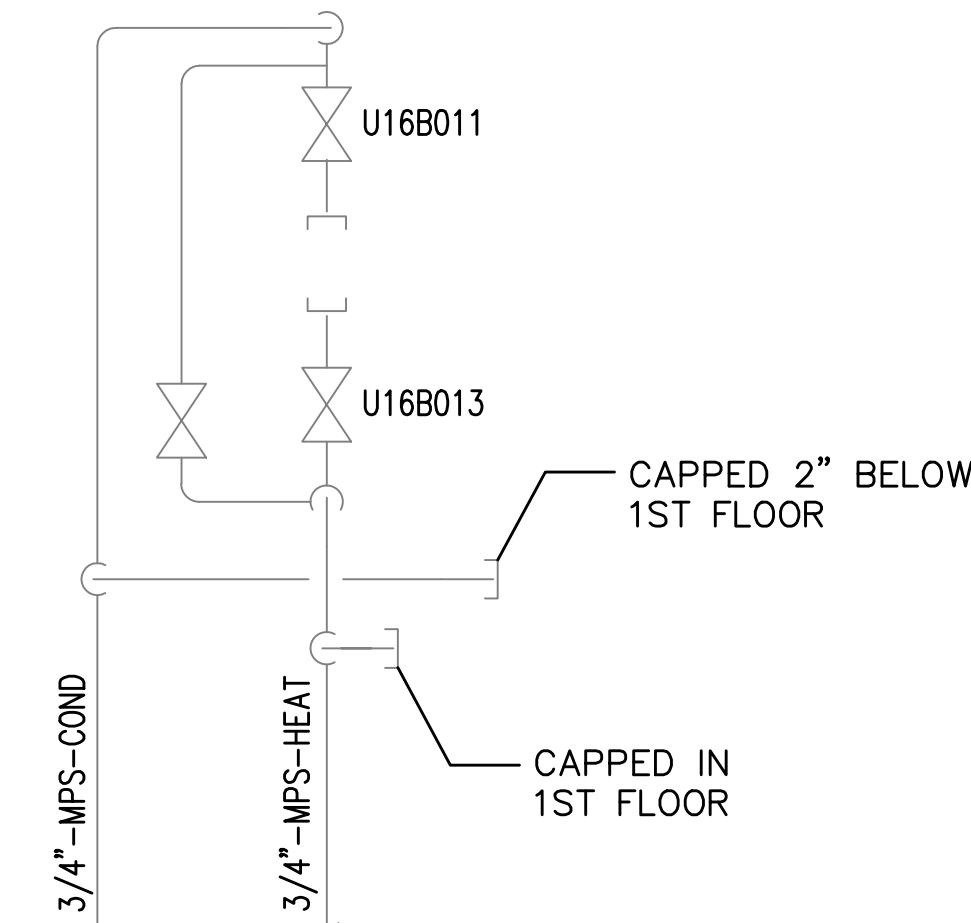
DETAIL 12
SCALE: NONE



DETAIL 13
SCALE: NONE




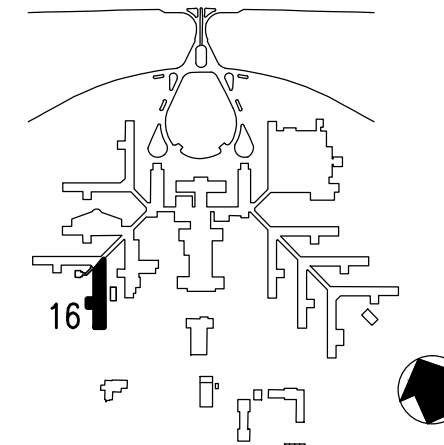
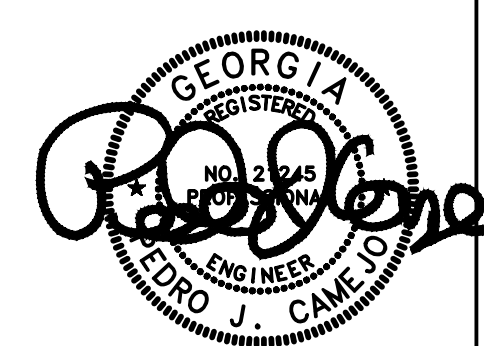

DETAIL 14
SCALE: NONE



DETAIL 15
SCALE: NONE

NOTES:
(THIS DETAIL ONLY)
① REMOVE AND HAUL AWAY IN ITS ENTIRETY HPS STEAM PIPING. TURN OVER TO VA COTR ALL VALVES AND STEAM TRAP TAGS THAT ARE NOT REUSED.
② CAP REMOVED BRANCH AS CLOSE TO MAIN AS POSSIBLE.

NOTES:
(THIS DETAIL ONLY)
① PROVIDE NEW ON/OFF 1/2\"/>

Revisions	Date	 APPLIED ENGINEERING SOLUTIONS 440 Martin Luther King, Jr. Blvd., Suite 401 Macon, Georgia 31201 (478) 314-1270 www.aes-pe.com			Drawing Title	Project Title		Date
					DETAILS	STEAM AND CONDENSATE PIPING SYSTEM STUDY		JUNE 22, 2012
					FINAL SUBMITTAL	Building Number 16	Checked PJC	Drawn JSW
					Location CARL VINSON VA MEDICAL CENTER DUBLIN, GEORGIA	Drawing No. 16-G-002	Dwg. Of 87	

VA FORM 08-6231A, MAR 1984

U.S. GOVERNMENT PRINTING OFFICE: 1984-440-467