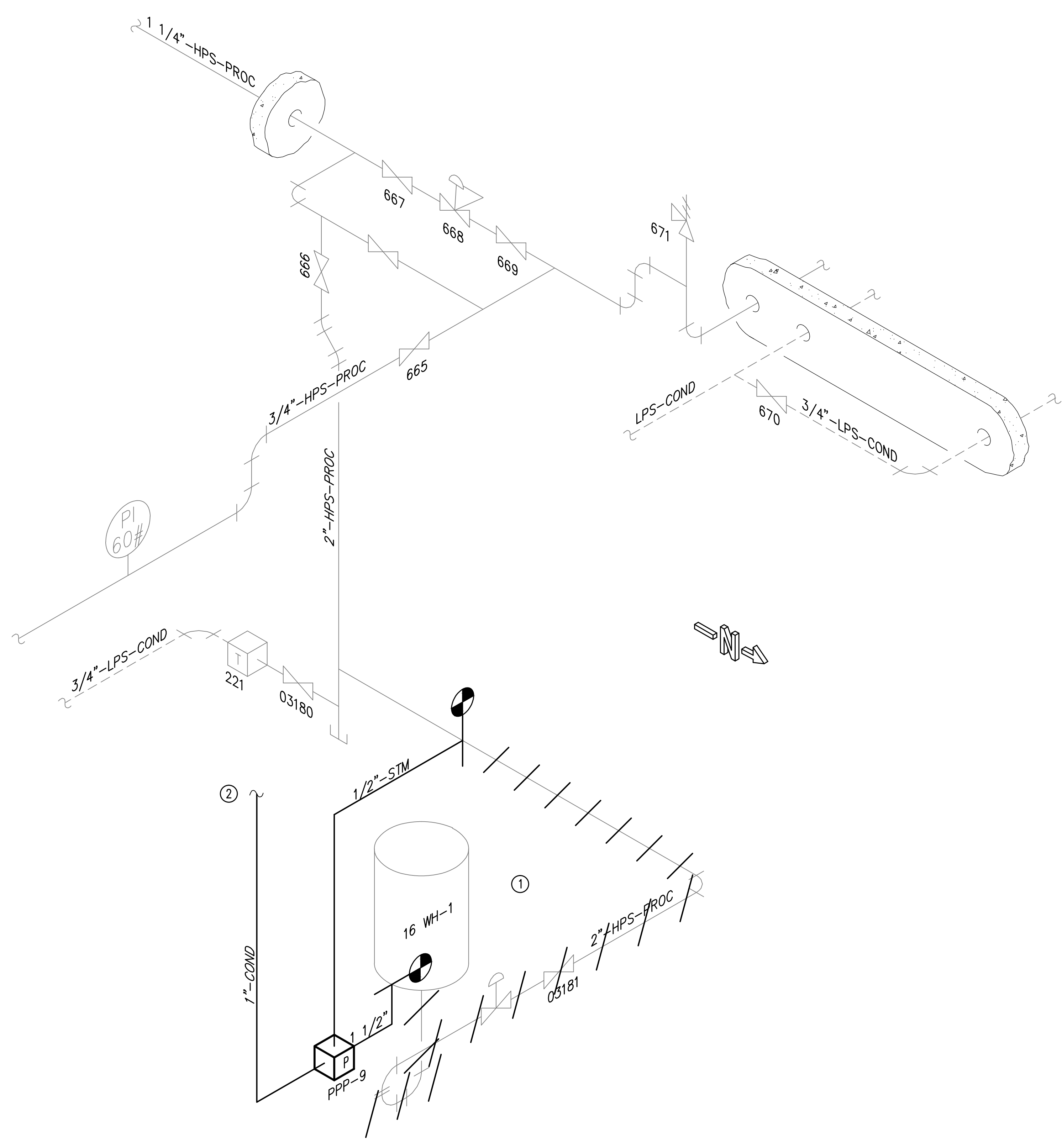
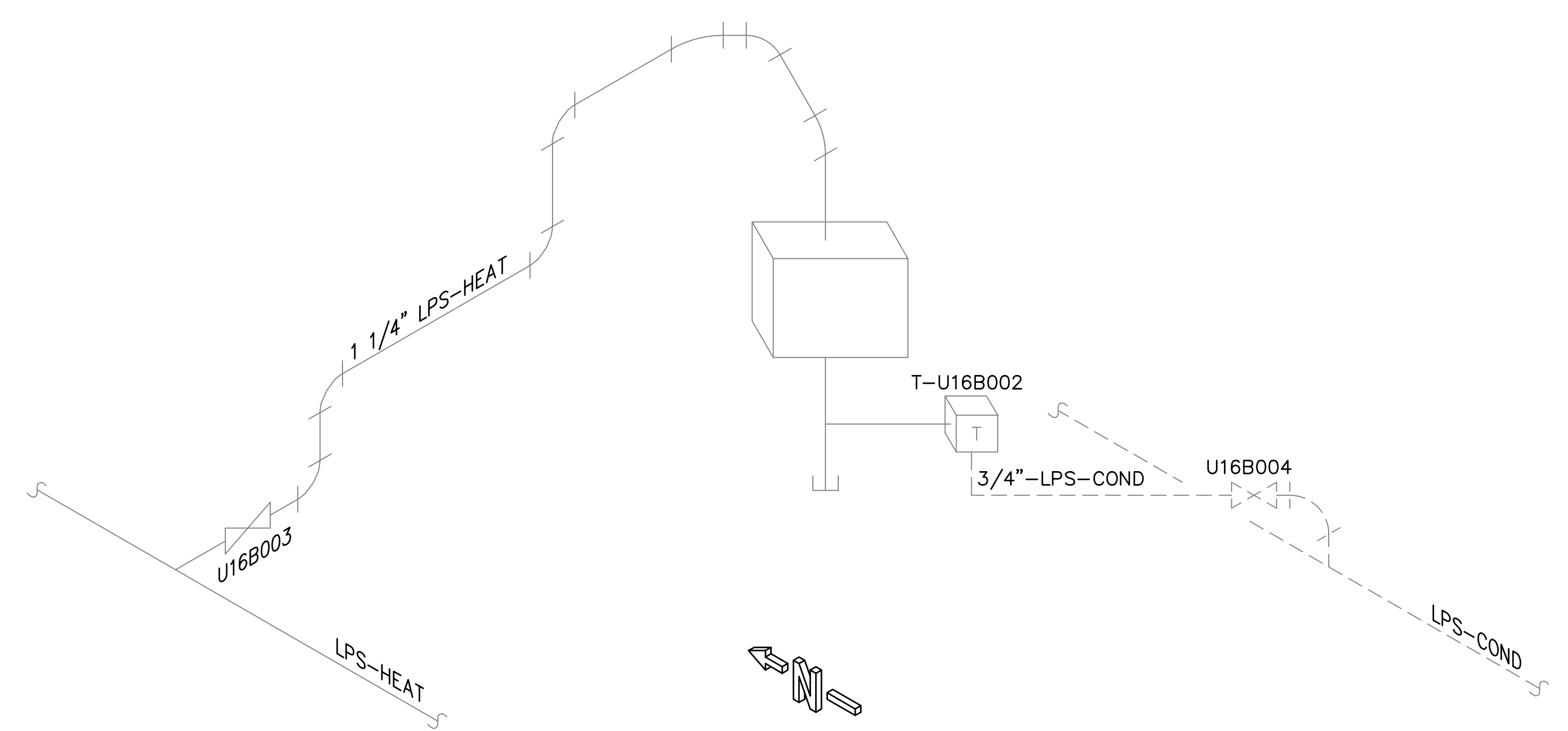


three inches = one foot  
one and one-half inches = one foot  
one inch = one foot  
three-quarters inch = one foot  
one-half inch = one foot  
three-eighths inch = one foot  
one-quarter inch = one foot  
one-eighth inch = one foot

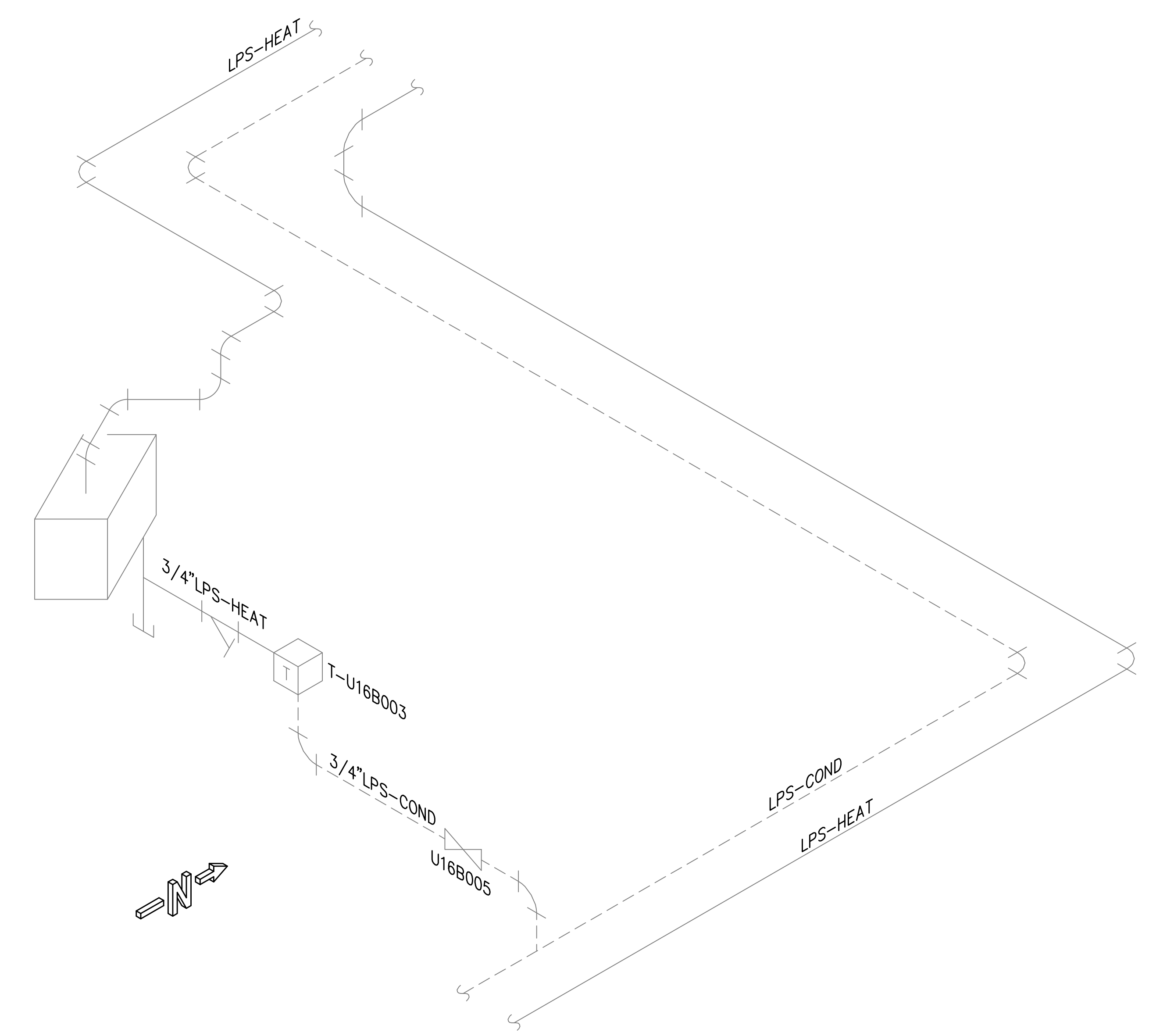
- NOTES:**  
(THIS SHEET ONLY)
- ① PROVIDE PPP-9 AS SCHEDULED AND AS DETAILED (TYPE I) ON SHEET I-1.04.
  - ② RUN 1" CONDENSATE TO RECEIVER FOR PUMP 219. SEE SHEET 16-G-004.




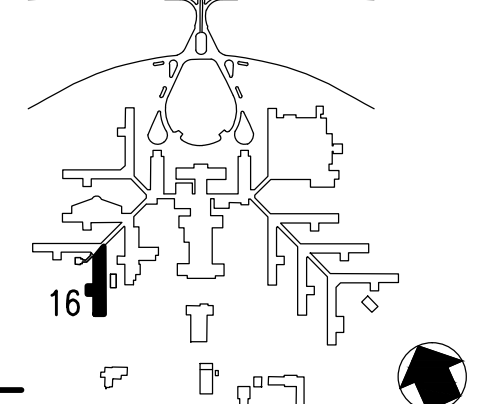

**DETAIL 6**  
SCALE: NONE



**DETAIL 10**  
SCALE: NONE



**DETAIL 11**  
SCALE: NONE

<div>Revisions</div> <table border="1"><thead><tr><th>Revisions</th><th>Date</th></tr></thead><tbody><tr><td> </td><td> </td></tr><tr><td> </td><td> </td></tr><tr><td> </td><td> </td></tr></tbody></table>	Revisions	Date							<div><b>APPLIED ENGINEERING SOLUTIONS</b> 440 Martin Luther King, Jr. Blvd., Suite 401 Macon, Georgia 31201 (478) 314-1270 www.aes-pe.com</div>	<div><b>KEY PLAN</b> SCALE: NONE</div>	<div></div>	Drawing Title <b>DETAILS</b>		Project Title <b>STEAM AND CONDENSATE PIPING SYSTEM STUDY</b>		Date JUNE 22, 2012	
	Revisions	Date															
Building Number <b>16</b>		Checked <b>PJC</b>	Drawn <b>JSW</b>	Project No. 557-10-109													
Location CARL VINSON VA MEDICAL CENTER DUBLIN, GEORGIA		Drawing No. <b>16-G-003</b>		Dwg. 77 Of 87													
FINAL SUBMITTAL																	

Veterans Administration