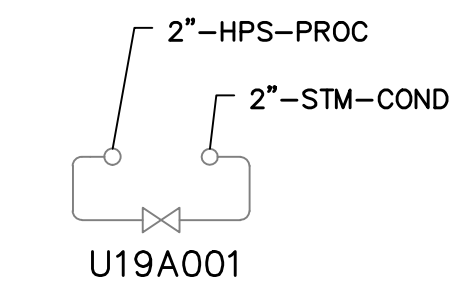


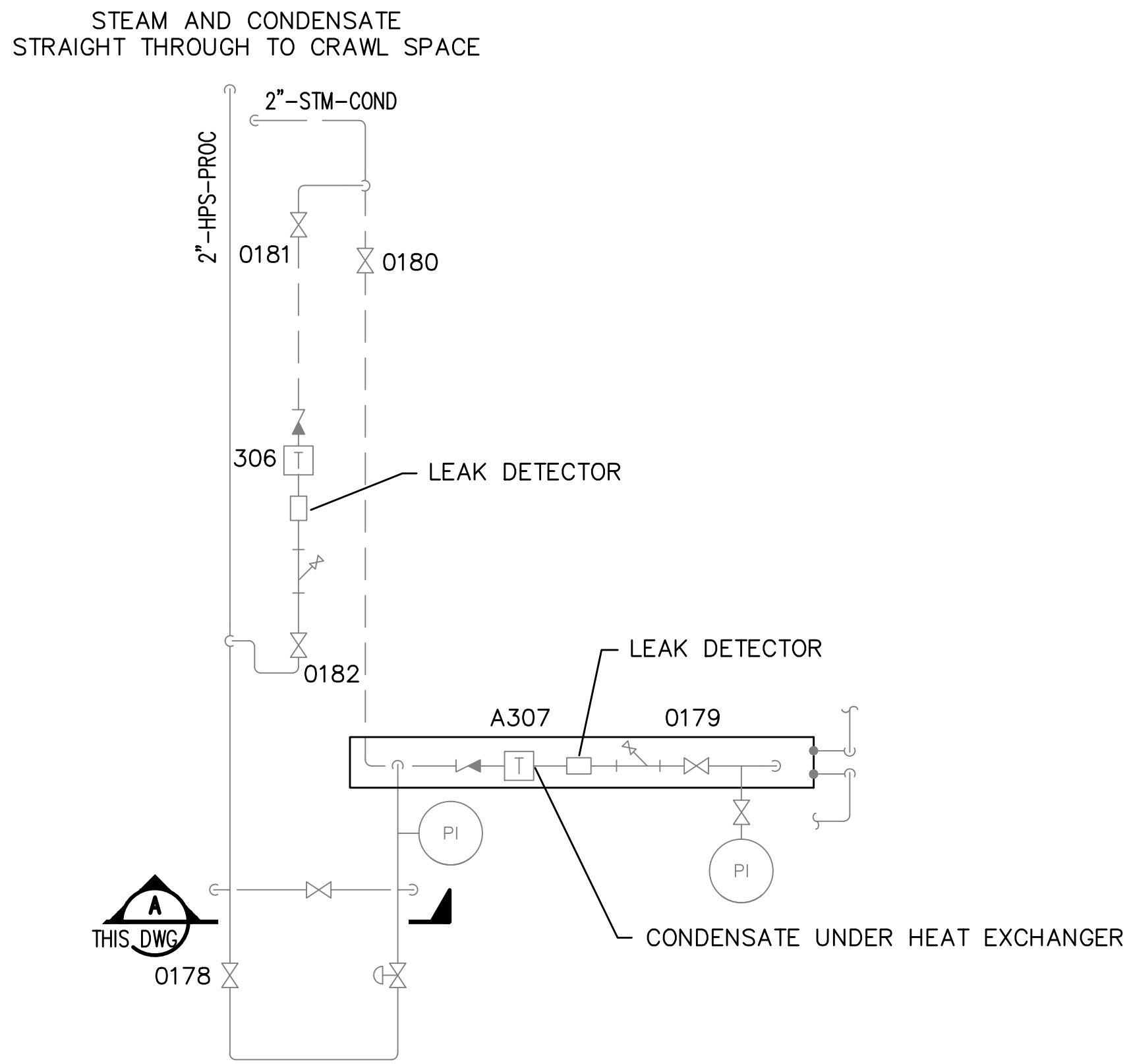
three inches = one foot
one and one-half inches = one foot
one inch = one foot
three-quarters inch = one foot
one-half inch = one foot
three-eighths inch = one foot
one-quarter inch = one foot
one-eighth inch = one foot

A
B
C
D
E
F
G

DRAWING NOTES:
A. NO WORK REQUIRED THIS AREA. SHEET INCLUDED FOR COMPLETENESS OF RECORD DRAWINGS.



SECTION A
SCALE: NONE

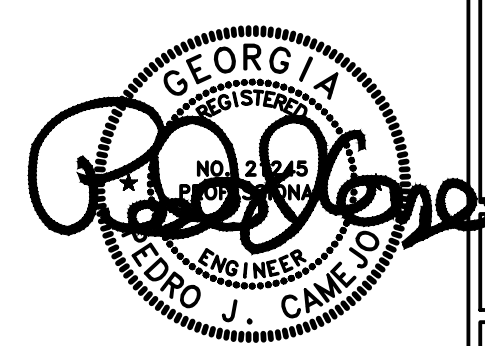
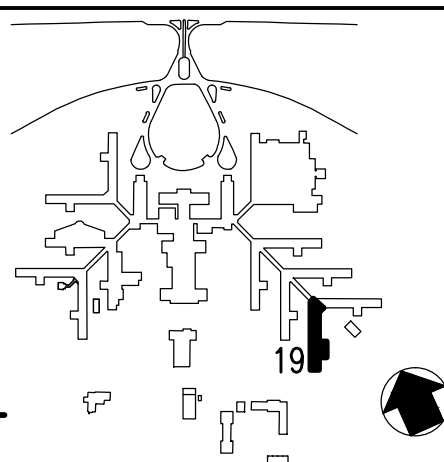


BUILDING 17 / 19 JUNCTION
ATTIC PLAN
SCALE: 1/2" = 1'-0"

Revisions	Date

AES
APPLIED ENGINEERING SOLUTIONS
440 Martin Luther King, Jr. Blvd., Suite 401
Macon, Georgia 31201
(478) 314-1270
www.aes-pe.com

KEY PLAN
SCALE: NONE



Drawing Title
BUILDING 17 / 19 JUNCTION ATTIC PLAN
FINAL SUBMITTAL

Project Title
STEAM AND CONDENSATE PIPING SYSTEM STUDY
Building Number
19
Location
CARL VINSON VA MEDICAL CENTER DUBLIN, GEORGIA

Date
JUNE 22, 2012
Project No.
557-10-109
Drawing No.
19-G-301
Dwg. 81 Of 87

Veterans Administration