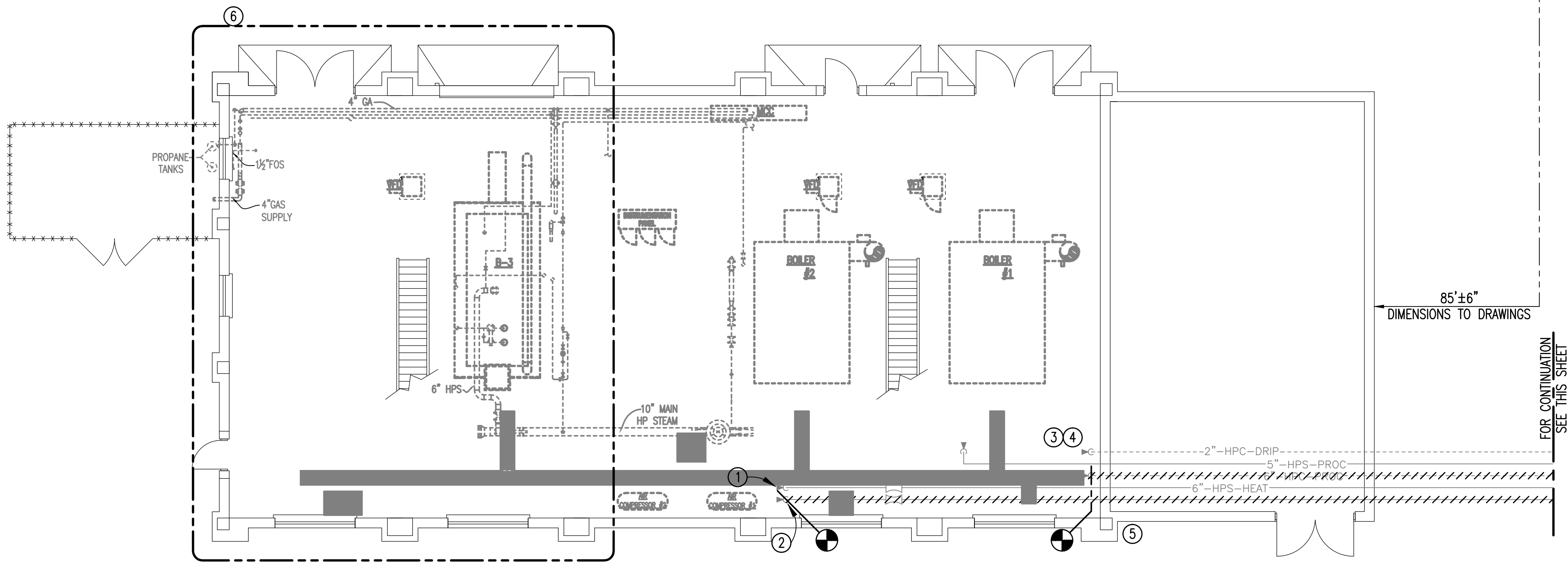
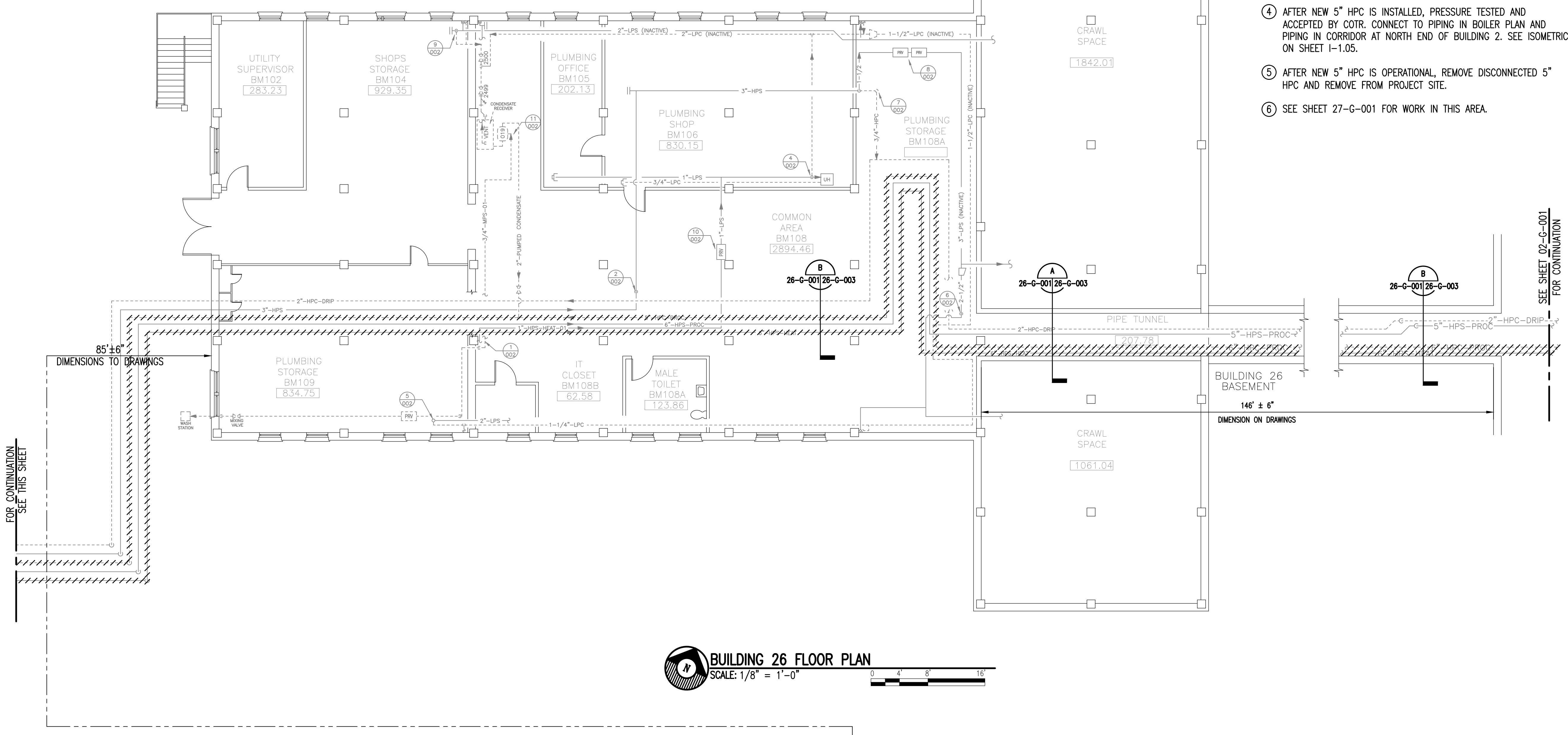


three inches = one foot
one and one-half inches = one foot
one inch = one foot
three-quarters inch = one foot
one-half inch = one foot
three-eighths inch = one foot
one-quarter inch = one foot
one-eighth inch = one foot

A
B
C
D
E
F
G

- NOTES:**
(THIS SHEET ONLY)
- 1 AFTER ALL INDICATED CROSS CONNECTIONS FROM PROCESS STEAM TO HEATING SYSTEMS HAVE BEEN MADE REMOVE 6" HPS HEAT STEAM LINE IN ITS ENTIRETY UP TO THIS VALVE ON THE STEAM HEADER. REMOVE ALL MATERIALS FROM SITE.
 - 2 SCHEDULE SYSTEM SHUTDOWN, REMOVE 6" VALVE AND WELD A PERMANENTLY CAP ON THE REMAINING FLANGE.
 - 3 AFTER REMOVAL OF HEATING SYSTEM INSTALL NEW 5" HPC RETURN LINE FROM THIS VALVE LOCATION IN BUILDING 27 TO CORRIDOR ON NORTH END OF BUILDING 2. SEE ISOMETRICS ON SHEET 1-1.05. INSTALL NEW PIPE IN SPACE VACATED BY 6" HEATING STEAM LINE.
 - 4 AFTER NEW 5" HPC IS INSTALLED, PRESSURE TESTED AND ACCEPTED BY COTR. CONNECT TO PIPING IN BOILER PLAN AND PIPING IN CORRIDOR AT NORTH END OF BUILDING 2. SEE ISOMETRIC ON SHEET 1-1.05.
 - 5 AFTER NEW 5" HPC IS OPERATIONAL, REMOVE DISCONNECTED 5" HPC AND REMOVE FROM PROJECT SITE.
 - 6 SEE SHEET 27-G-001 FOR WORK IN THIS AREA.



Revisions 	Date 	 APPLIED ENGINEERING SOLUTIONS 440 Martin Luther King, Jr. Blvd., Suite 401 Macon, Georgia 31201 (478) 314-1270 www.aes-pe.com			Drawing Title BUILDING 26 AND 27 FLOOR PLANS		Project Title STEAM AND CONDENSATE PIPING SYSTEM STUDY		Date JUNE 22, 2012	
					Building Number 27		Checked PJC	Drawn JSW	Project No. 557-10-109	
					Location CARL VINSON VA MEDICAL CENTER DUBLIN, GEORGIA		Drawing No. 26-G-001		Dwg. 82 Of 87	
FINAL SUBMITTAL										

VA FORM 08-6231A, MAR 1984

U.S. GOVERNMENT PRINTING OFFICE: 1984-440-467

Veterans Administration