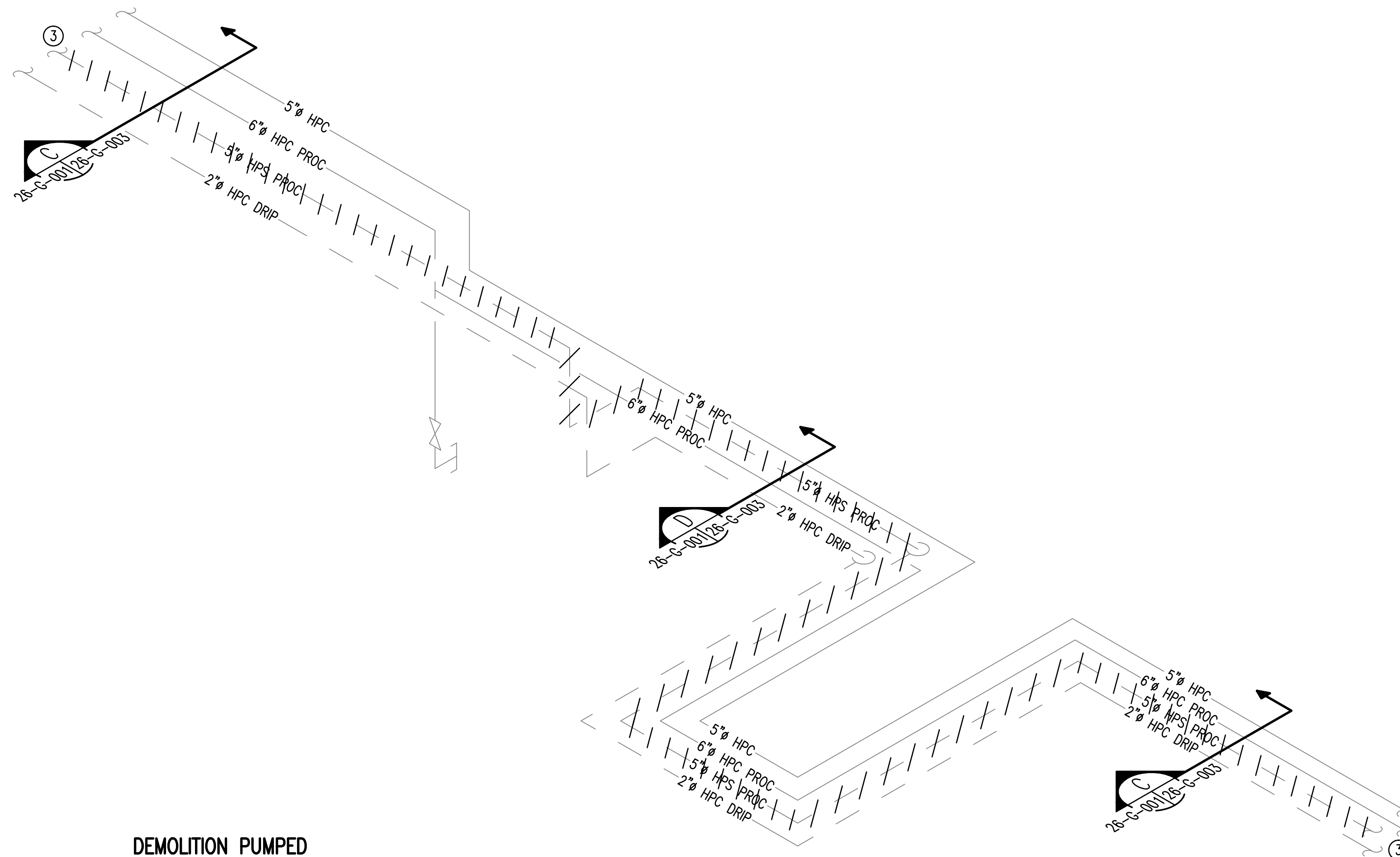
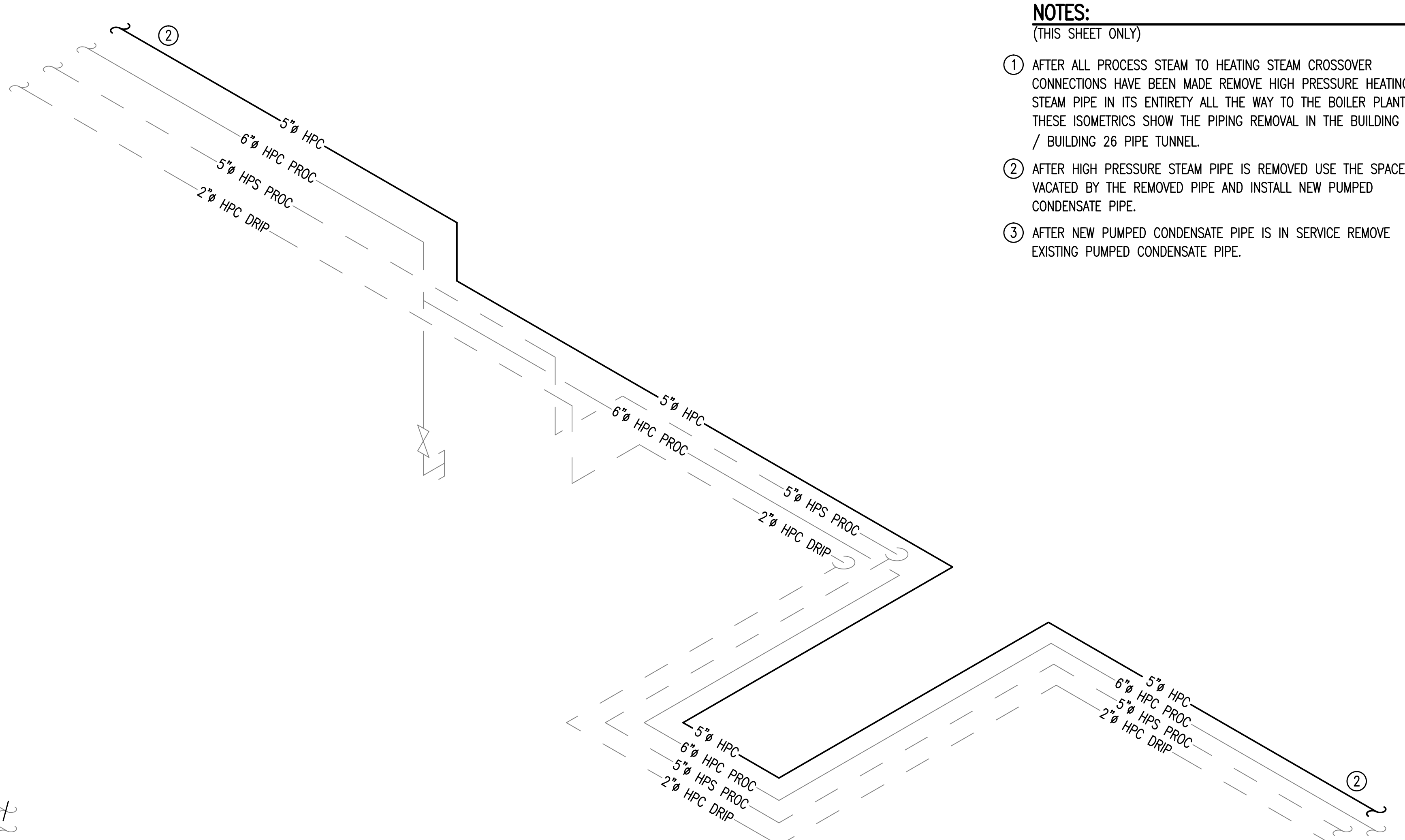


DEMOLITION
STEAM LINE – BUILDING 2 TO 27
SCALE: NOT TO SCALE




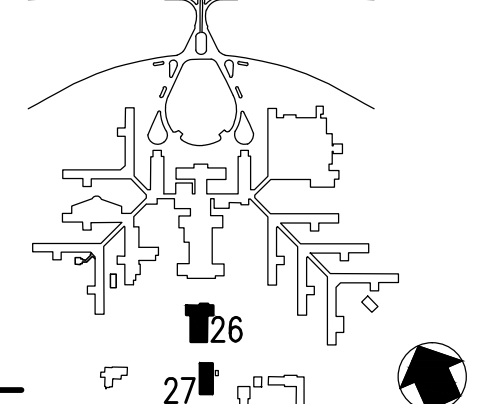
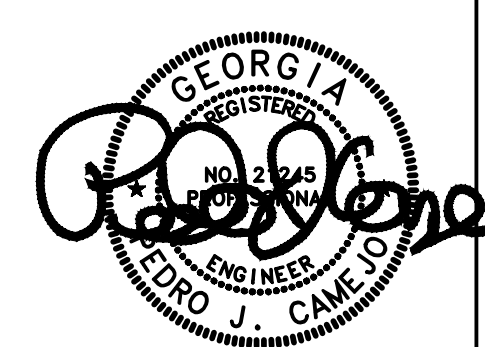
DEMOLITION PUMPED
CONDENSATE LINE – BUILDING 2 TO 27
SCALE: NOT TO SCALE



NEW WORK
PUMPED CONDENSATE – BUILDING 2 TO 27
SCALE: NOT TO SCALE

- NOTES:**
(THIS SHEET ONLY)
- ① AFTER ALL PROCESS STEAM TO HEATING STEAM CROSSOVER CONNECTIONS HAVE BEEN MADE REMOVE HIGH PRESSURE HEATING STEAM PIPE IN ITS ENTIRETY ALL THE WAY TO THE BOILER PLANT. THESE ISOMETRICS SHOW THE PIPING REMOVAL IN THE BUILDING 2 / BUILDING 26 PIPE TUNNEL.
 - ② AFTER HIGH PRESSURE STEAM PIPE IS REMOVED USE THE SPACE VACATED BY THE REMOVED PIPE AND INSTALL NEW PUMPED CONDENSATE PIPE.
 - ③ AFTER NEW PUMPED CONDENSATE PIPE IS IN SERVICE REMOVE EXISTING PUMPED CONDENSATE PIPE.



<div>Revisions</div> <table border="1"><thead><tr><th>Revisions</th><th>Date</th></tr></thead><tbody><tr><td> </td><td> </td></tr><tr><td> </td><td> </td></tr><tr><td> </td><td> </td></tr></tbody></table>	Revisions	Date							<div> APPLIED ENGINEERING SOLUTIONS 440 Martin Luther King, Jr. Blvd., Suite 401 Macon, Georgia 31201 (478) 314-1270 www.aes-pe.com</div>	<div> KEY PLAN SCALE: NONE</div>	<div></div>	<div>Drawing Title DEMOLITION AND NEW WORK ISOMETRIC PIPING PLANS BUILDING 26 AND 27</div>	<div>Project Title STEAM AND CONDENSATE PIPING SYSTEM STUDY</div>	<div>Date JUNE 22, 2012</div>	<div>Veterans Administration</div>
	Revisions	Date													
<div>Building Number 27</div>	<div>Checked PJC</div>	<div>Drawn JSW</div>	<div>Project No. 557-10-109</div>												
<div>FINAL SUBMITTAL</div>			<div>Location CARL VINSON VA MEDICAL CENTER DUBLIN, GEORGIA</div>	<div>Drawing No. 26-G-003</div>											
			<div>Dwg. 84 Of 87</div>												