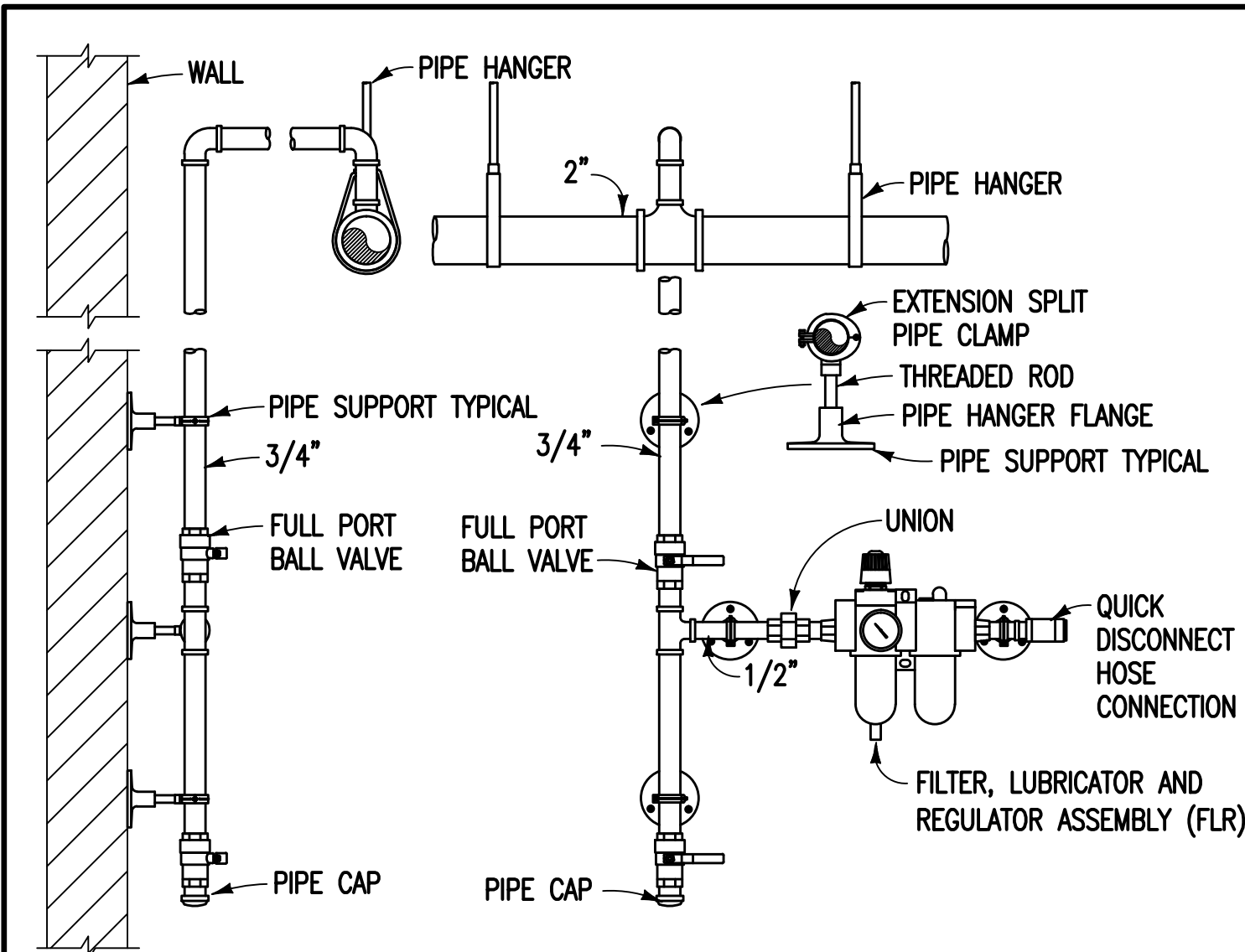
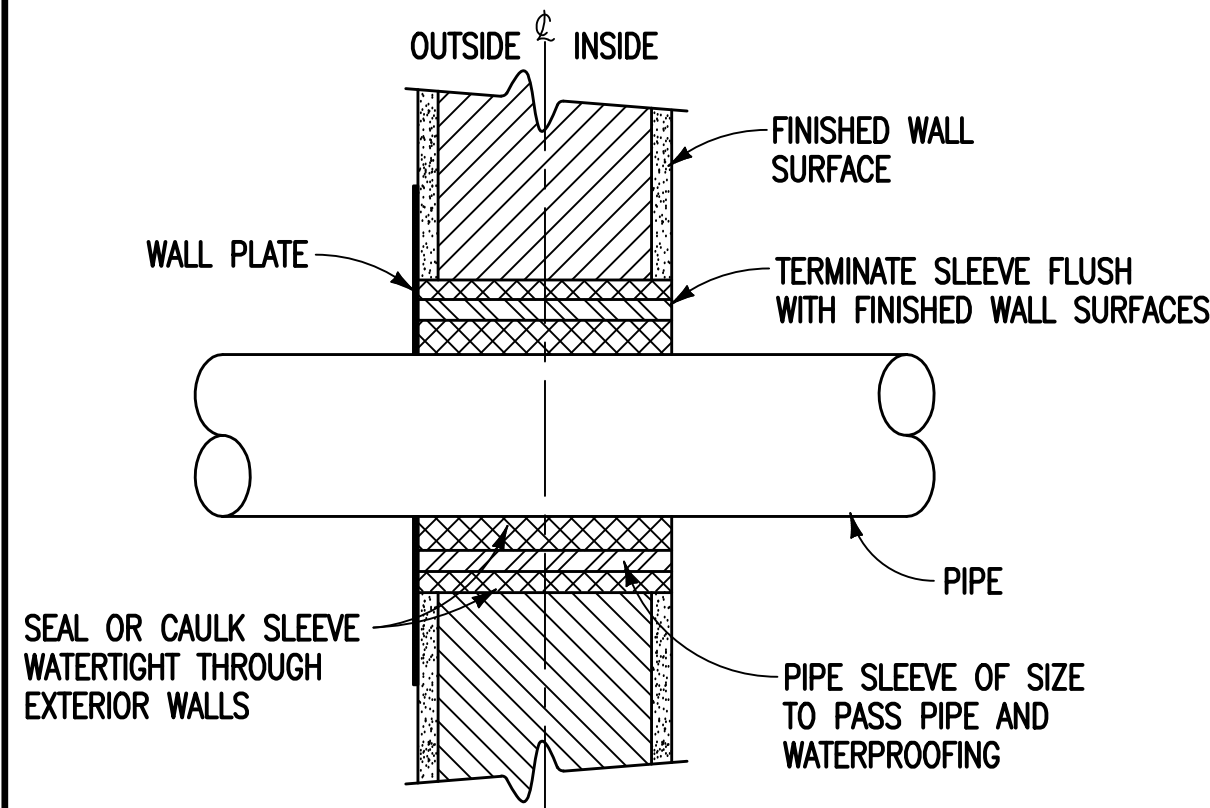


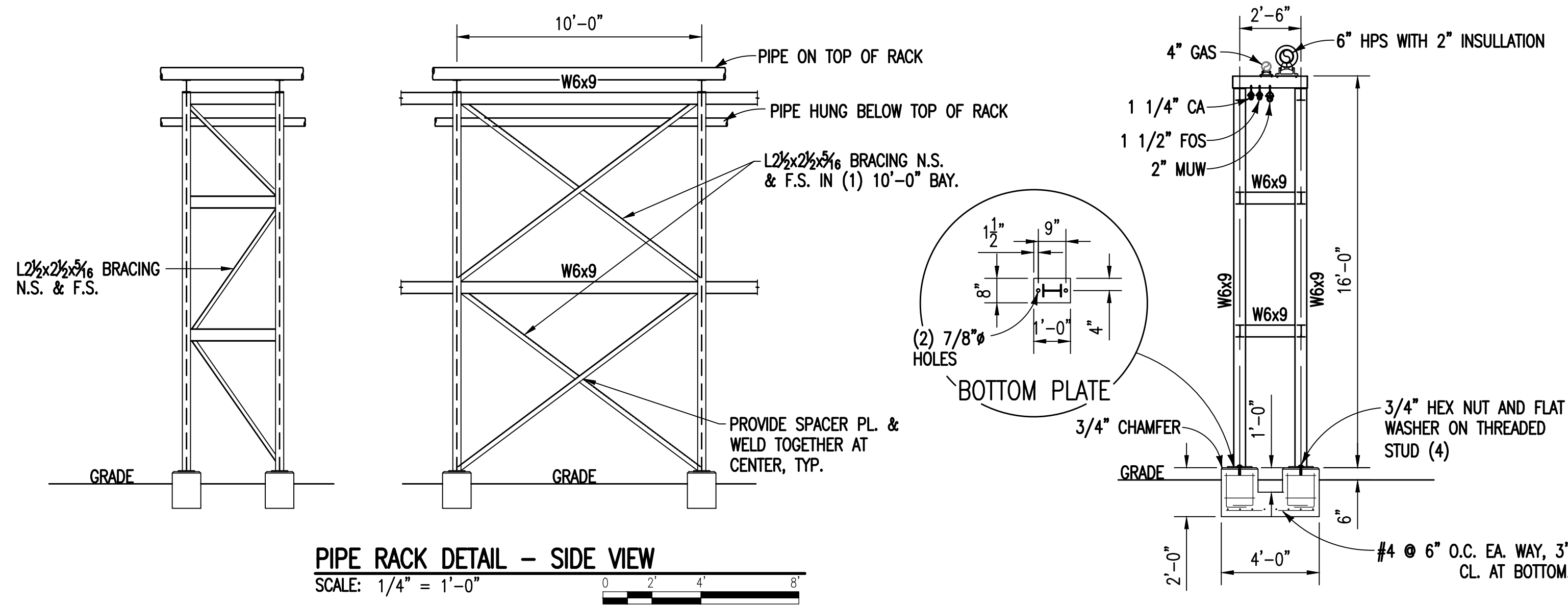
three inches = one foot
one and one-half inches = one foot
one inch = one foot
three-quarters inch = one foot
one-half inch = one foot
three-eighths inch = one foot
one-quarter inch = one foot
one-eighth inch = one foot



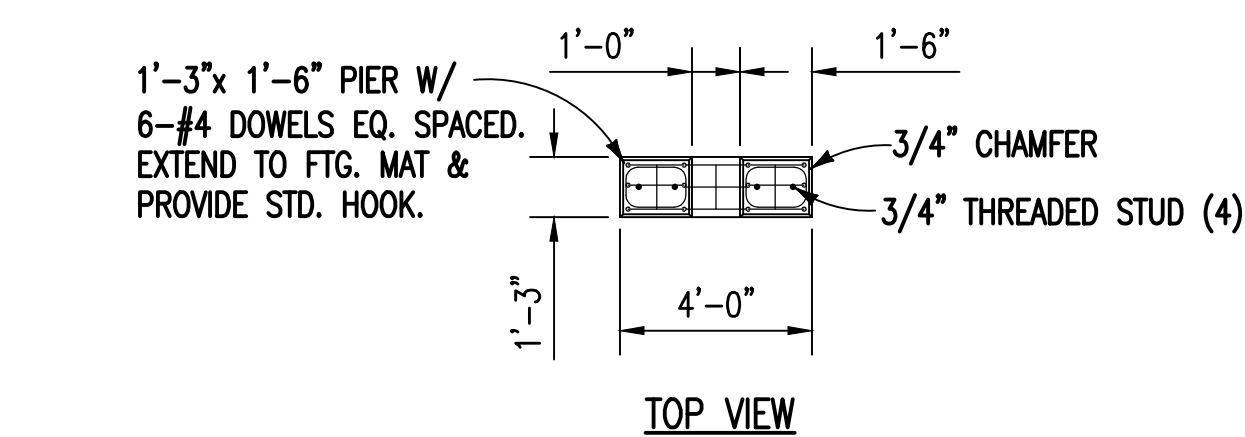
COMPRESSED AIR POINT OF USE DETAIL
SCALE: NONE



PIPE THRU EXTERIOR WALL DETAIL
SCALE: NONE



PIPE RACK DETAIL - SIDE VIEW
SCALE: 1/4" = 1'-0"



PIPE RACK DETAIL - END VIEW
SCALE: 1/4" = 1'-0"

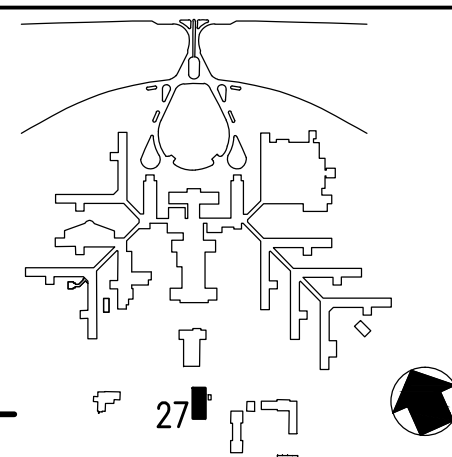
GENERAL NOTES:

- (THIS DETAIL ONLY)
- SHOP FABRICATE PIPE SUPPORT BENTS AS COMPLETE ASSEMBLIES FOR SHIPMENT TO SITE. PROVIDE SOLID 3/8" FILLET WELDS FOR ALL CONNECTIONS, U.N.O.
 - FABRICATE ALL OTHER BEAMS USING SHOP WELDED / FIELD BOLTED CLIP ANGLE CONNECTIONS. CONTRACTOR SHALL SUBMIT SHOP DRAWINGS, SHOWING CONNECTION DETAILS, FOR APPROVAL PRIOR TO FABRICATION.
 - PROVIDE ALL VERTICAL AND HORIZONTAL BRACING MEMBERS WITH CONNECTIONS FOR FIELD BOLTING.
 - ALL STEEL WORK SHALL CONFORM TO AISC MANUAL OF STEEL CONSTRUCTION, LATEST ED.
 - ALL WELDING SHALL BE PERFORMED BY CERTIFIED WELDERS IN ACCORDANCE WITH AWS D1.1, LATEST ED.
 - STRUCTURAL STEEL SHALL CONFORM TO ASTM A36 (36 KSI YIELD), U.N.O.
 - WIDE FLANGE MEMBERS SHALL CONFORM TO ASTM A992, GR. 50 (50 KSI YIELD).
 - ALL WELD ELECTRODES SHALL BE E70XX; ALL BOLTS SHALL BE A325.
 - ANCHOR BOLTS SHALL CONFORM TO ASTM F1554, GR. 36.
 - CLEAN AND PREPARE ALL STRUCTURAL STEEL PER SSPC SP-6 & PRIME IN ACCORDANCE WITH VA SPECIFICATIONS. PROVIDE TOP-COAT TO MATCH EXISTING PIPE SUPPORTS.



APPLIED ENGINEERING
SOLUTIONS
440 Martin Luther King, Jr. Blvd., Suite 401
Macon, Georgia 31201
(478) 314-1270
www.aes-pe.com

KEY PLAN
SCALE: NONE



PAINT SCHEDULE			
SYMBOL	FINISHED COLOR	LABEL LEGEND	NOTES
FOS	GREEN	FUEL OIL	1:2:
NG	BLUE	NATURAL GAS	1:2:
FEEDWATER	YELLOW	BOILER FEED	2:
HPS	YELLOW	STEAM	1:2:
CA	YELLOW	COMPRESSED AIR	1:2:
PIPE RACK	GREY	-	3:

NOTES:

- PAINT ALL NEW PIPING PER SCHEDULE, LABEL ALL PIPING WITH PLASTIC WRAP AROUND PIPE LABELS WITH TYPE FLUID CARRIED AND DIRECTION OF FLOW. LABELS SHALL BE EVERY TEN FEET.
- ALL PAINTING SHALL COMPLY WITH MANUFACTURER'S INSTRUCTIONS. SURFACES PAINTED: ONE COAT GRAY ALKYD FAST DRYING PRIMER, SPREAD RATE 425 SQUARE FEET PER GALLON, 2.0 MILS DFT. TWO COATS ALKYD GLOSS FINISH, SPREAD RATE 417 SQUARE FEET PER GALLON, 2.0 MILS PER COAT DFT.
- SEE PIPE RACK DETAIL'S GENERAL NOTES FOR PRIMING AND PAINTING STEEL.

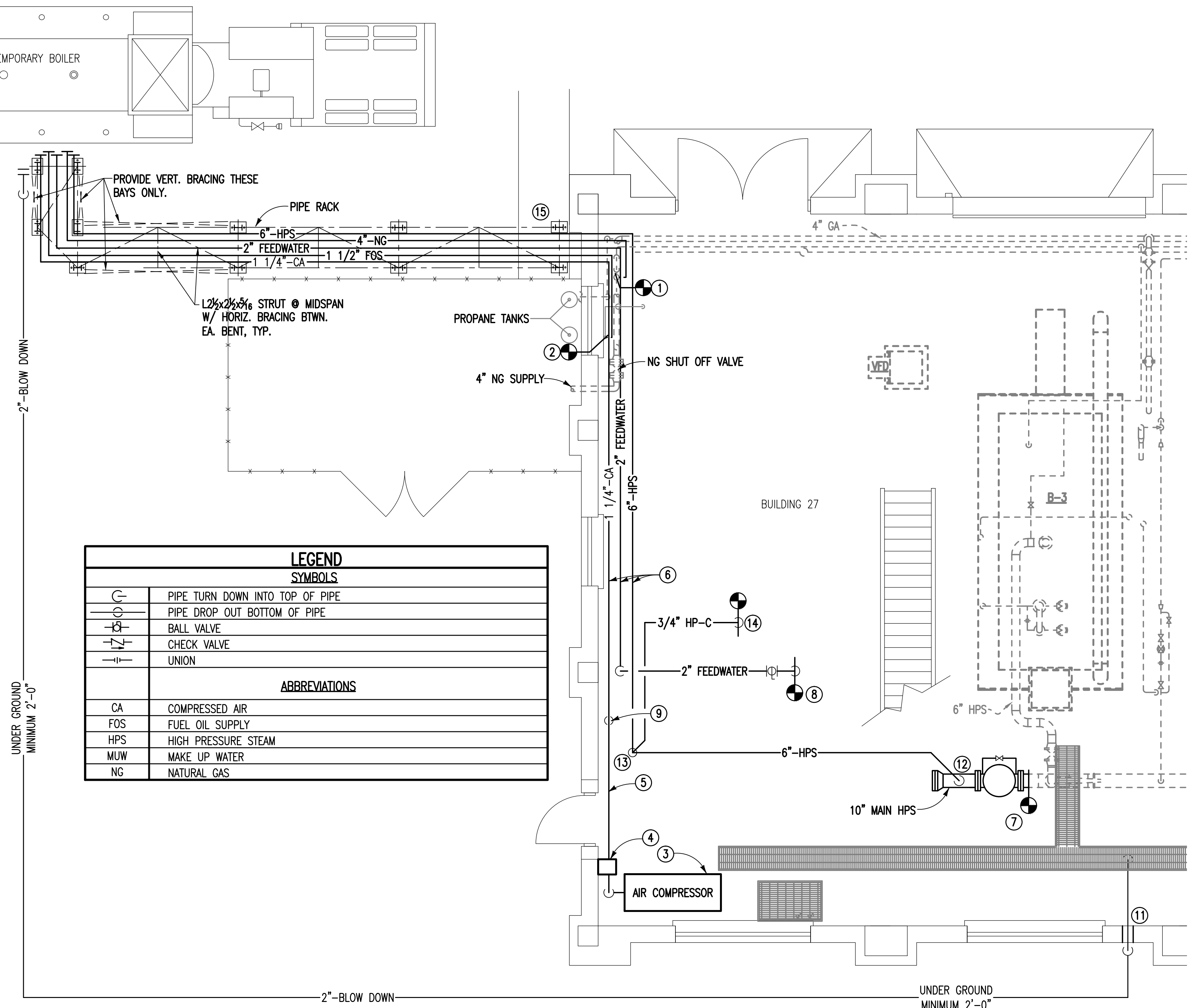
AIR COMPRESSOR SCHEDULE				
SYMBOL	MAKE	TYPE	MODEL	NOTES
A1	CHAMPION	HORIZONTAL UNIT	HRA20-25	1:2:
A2	BEKO	DRYER	RA125	2:3:
A3	WILKERSON	OIL/FILTER	M35-0B-FS0	2:
A4	WILKERSON	DRAIN	XB3-04-000	2:
A5	WILKERSON	FRL	C16-C4-E00	2:

NOTES:

- 80 CFM @125 PSIG.
- SUBSTITUTION ACCEPTABLE WITH APPROVALS.
- 115V-60,1Ø

NOTES:
(THIS SHEET ONLY)

- CONNECT TO EXISTING 4" STEEL NATURAL GAS PIPE AND INSTALL A 4" SCHEDULE 40 STANDARD TEE BY WELDING METHOD. INSTALL 4" FULL PORT GATE OR BALL VALVE AND ROUTE 4" SCHEDULE 40 STEEL PIPE AS INDICATED. TERMINATE PIPE WITH A GASKET AND BLIND FLANGE. REFER TO DETAIL AND PAINT SCHEDULE ON THIS SHEET.
- CONNECT TO EXISTING 1 1/4" FUEL OIL PIPE AT SIDE OUTLET TEE WITH SHUT OFF VALVE, ROUTE NEW 1 1/4" SCHEDULE 40 STEEL PIPE AS INDICATED. TERMINATE PIPE WITH A CAP. REFER TO DETAIL AND PAINT SCHEDULE ON THIS SHEET.
- AIR COMPRESSOR AND ASSOCIATED FILTERS AND DRAINS: REFER TO DETAILS AND AIR COMPRESSOR SCHEDULE ON THIS SHEET.
- REFRIGERATED AIR DRYER: FABRICATE RACK TO SUPPORT WEIGHT OF DRYER. TYPICAL TO TWO B-LINE B3067 HEAVY DUTY BRACKETS OR EQUAL. ROUTE CONDENSATE DRAIN PIPING DOWN AND THROUGH OUTSIDE WALL. TERMINATE 12" ABOVE GRADE WITH TURN DOWN AND BUG PROOF SCREENED DISCHARGE OPENING. REFER TO DETAILS AND AIR COMPRESSOR SCHEDULE ON THIS SHEET.
- ROUTE 1 1/2", SCHEDULE 40 STEEL AIR PIPING AS INDICATED. TERMINATE END WITH CAP. REFER TO DETAIL AND PAINT SCHEDULE ON THIS SHEET.
- SECURE PIPING TO WALL UTILIZING B-LINE B3067 HEAVY DUTY BRACKETS AND PIPE GUIDES TO SUPPORT PIPING. COMPARABLE TYPE BRACKETS AND GUIDES ARE ACCEPTABLE.
- REMOVE EXISTING BLIND FLANGE FROM END OF 10" STEAM HEADER AND PROVIDE 10" GATE VALVE WITH BYPASS.
- CONNECT TO EXISTING BOILER FEED AND ROUTE NEW 2" SCHEDULE 40 GALVANIZED WATER PIPING AS INDICATED WITH 2" BALL VALVE. TERMINATE PIPE WITH CAP.
- INSTALL 3/4" SCHEDULE 40 STEEL AIR PIPING DROP TO A POINT OF USE CONNECTION. LOCATION TO BE COORDINATED WITH OWNER. REFER TO DETAIL ON THIS SHEET.
- 2" BLOWDOWN UNDER GROUND, COATED FOR IN GROUND USE. TERMINATE WITH FLANGED CAPPED CONNECTION. FOLLOW UTILITY LOCATION PROCEDURES REQUIRED BY VA HOSPITAL.
- BLOW DOWN THROUGH NEW SEALED WALL SLEEVE AT GRADE. TURN DOWN INTO BLOW DOWN TRENCH DRAIN.
- ADD ADDITIONAL 2'-0" SECTION OF 10" STEAM HEADER. TERMINATE WITH BLIND FLANGE AND CONNECT TO NEW 6" HPS FOR TEMPORARY BOILER.
- PROVIDE HIGH PRESSURE END OF MAIN DRIP WITH SUPERVISED START-UP VALVE AND 3/4" SPIREX SARCO TD 52 THERMO DYNAMIC TRAP.
- CONNECT TO HP RETURN TO CONDENSATE TANK AT THIS APPROXIMATE LOCATION.
- REMOVE CONCRETE SIDEWALK AS NECESSARY TO INSTALL PIPE RACK AND PIPE RACK FOUNDATION.



LEGEND	
SYMBOLS	
	PIPE TURN DOWN INTO TOP OF PIPE
	PIPE DROP OUT BOTTOM OF PIPE
	BALL VALVE
	CHECK VALVE
	UNION
ABBREVIATIONS	
CA	COMPRESSED AIR
FOS	FUEL OIL SUPPLY
HPS	HIGH PRESSURE STEAM
MUW	MAKE UP WATER
NG	NATURAL GAS

BUILDING 27 FLOOR PLAN
SCALE: 1/4" = 1'-0"

Revisions	Date		APPLIED ENGINEERING SOLUTIONS 440 Martin Luther King, Jr. Blvd., Suite 401 Macon, Georgia 31201 (478) 314-1270 www.aes-pe.com	KEY PLAN SCALE: NONE		Drawing Title BUILDING 27 ENLARGED FLOOR PLAN FINAL SUBMITTAL	Project Title STEAM AND CONDENSATE PIPING SYSTEM STUDY	Date JUNE 22, 2012 Project No. 557-10-109 Building Number 27 Location CARL VINSON VA MEDICAL CENTER DUBLIN, GEORGIA	Dwg. 85 Of 87	Veterans Administration
-----------	------	--	--	-------------------------	--	--	--	---	---------------	----------------------------