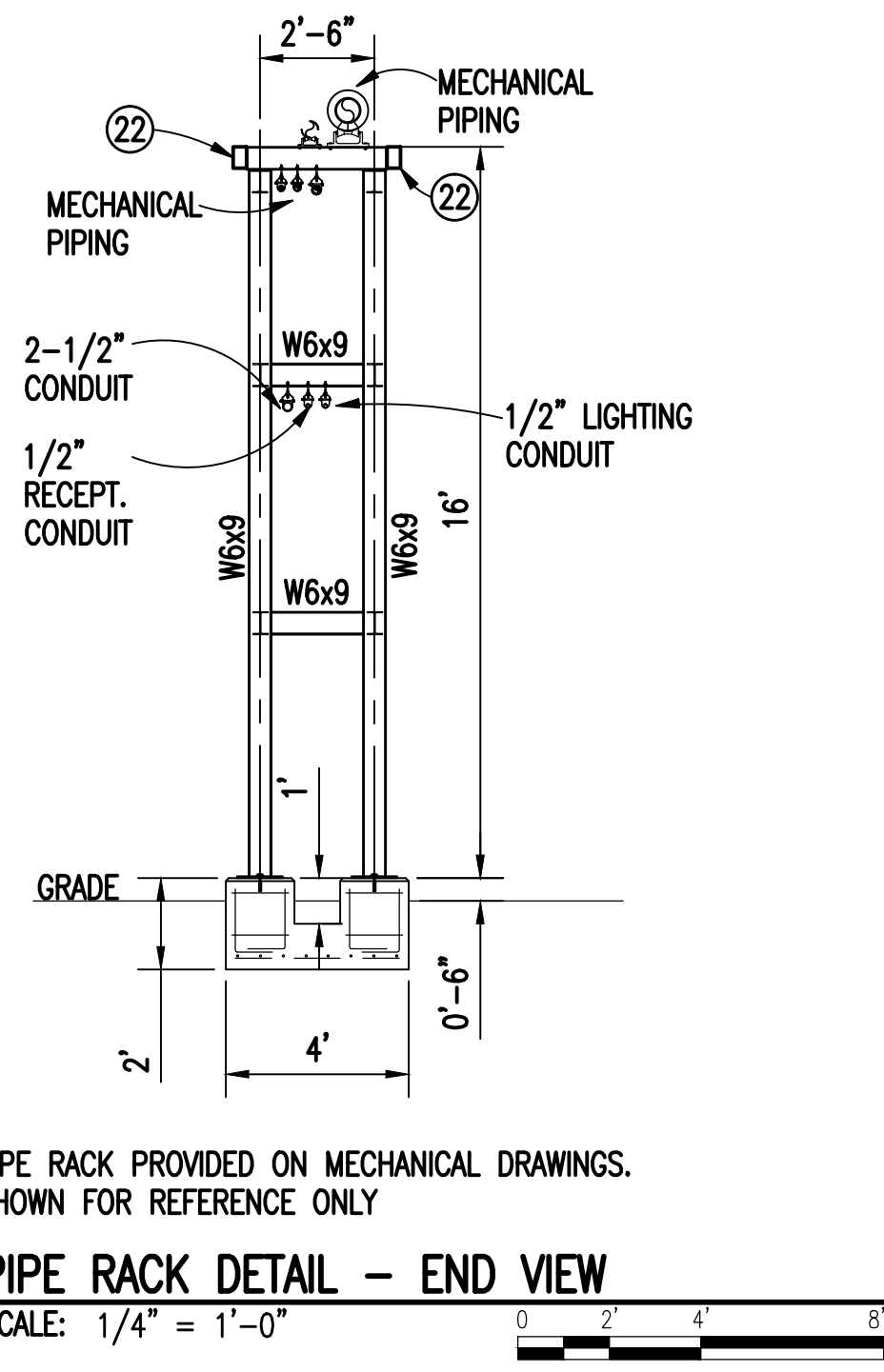
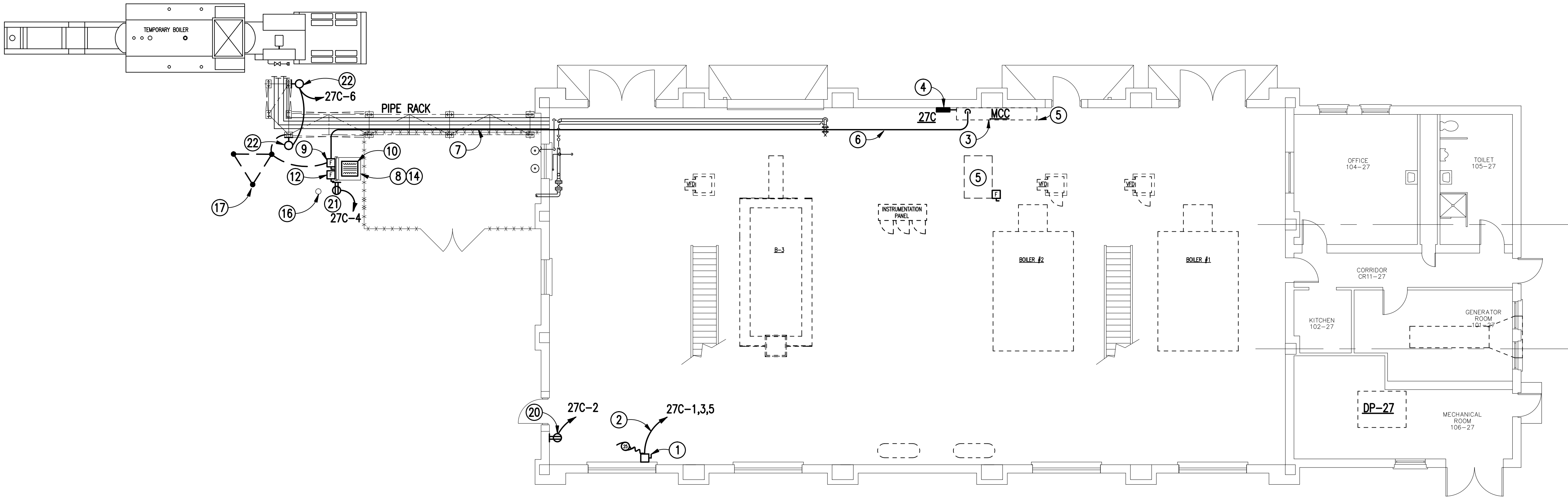
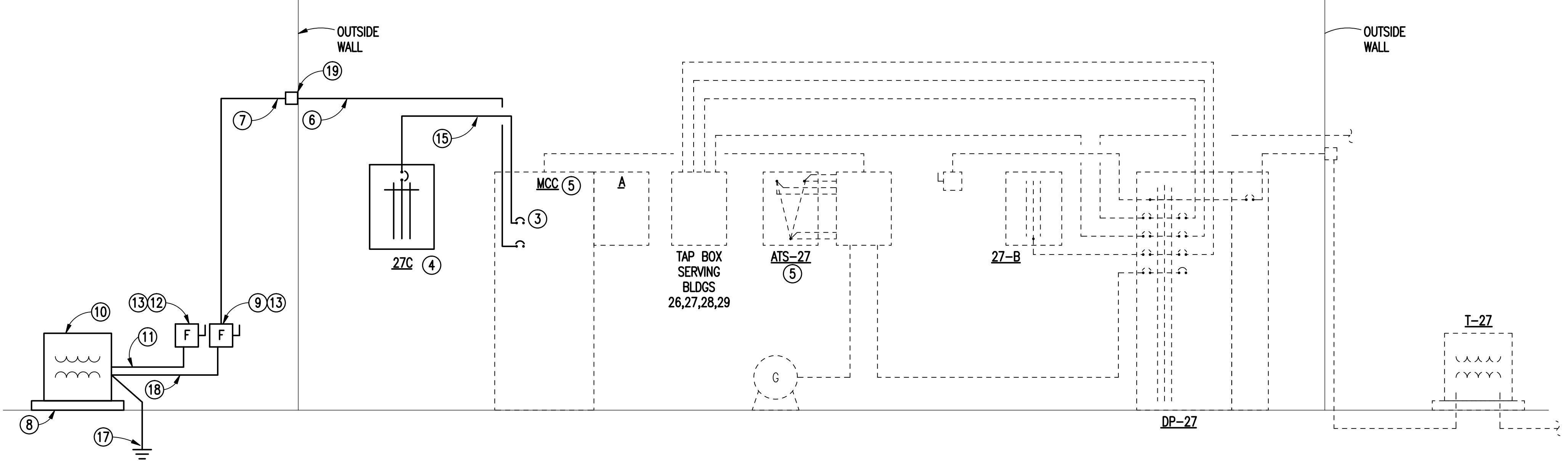


three inches = one foot
one and one-half inches = one foot
one inch = one foot
three-quarters inch = one foot
one-half inch = one foot
three-eighths inch = one foot
one-quarter inch = one foot
one-eighth inch = one foot



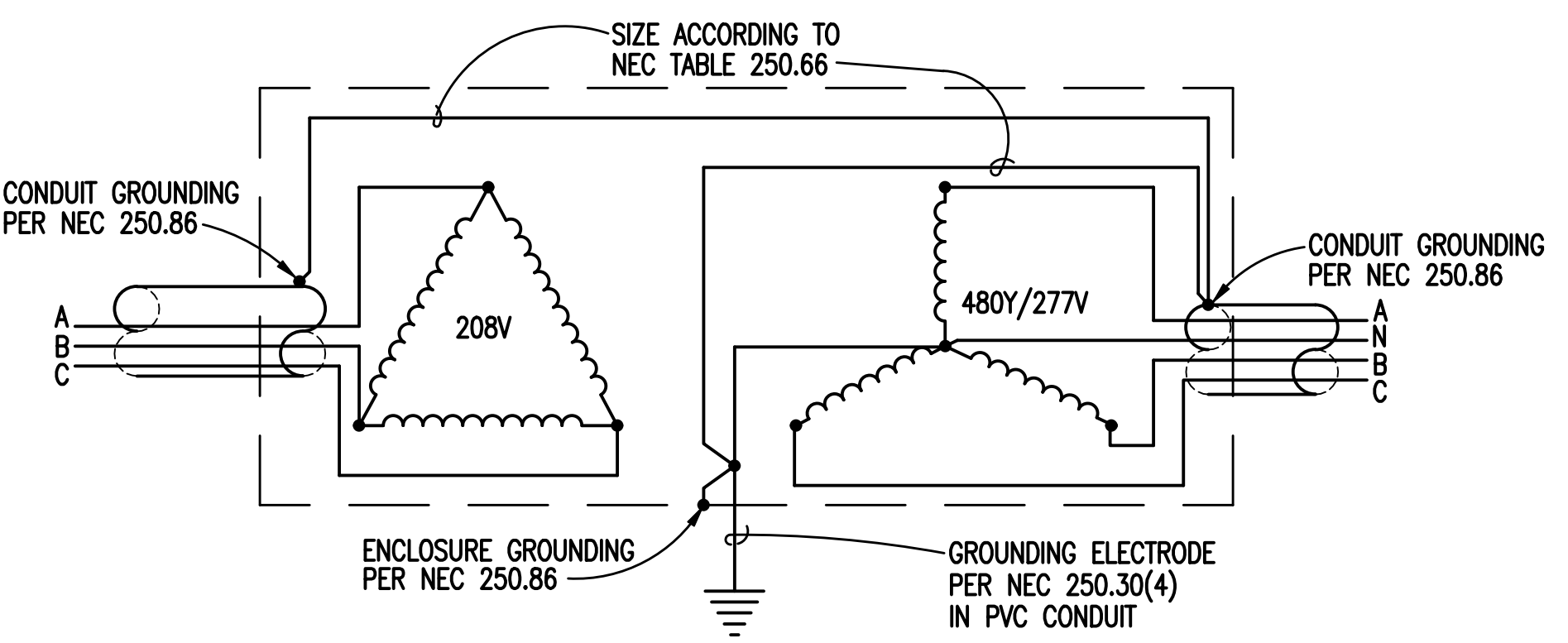
BUILDING 27 FLOOR PLAN
SCALE: 1/8" = 1'-0"



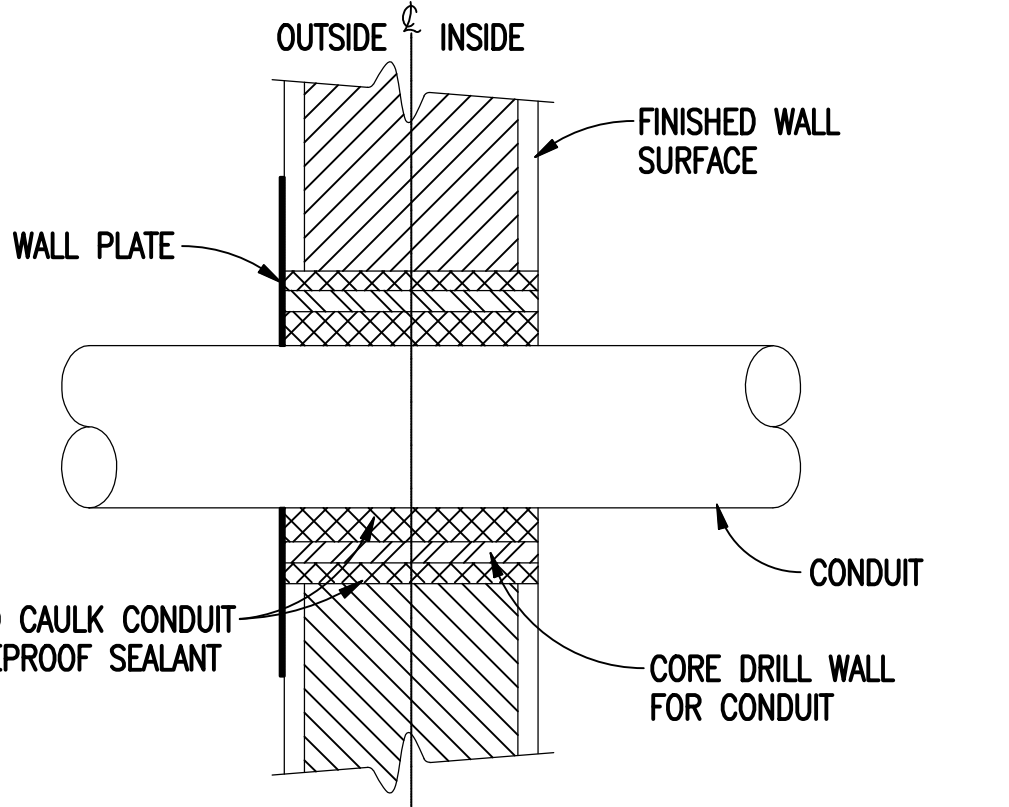
**BUILDING 27
NEW WORK NORMAL POWER RISER DIAGRAM**
SCALE: NONE

- NOTES:**
(THIS SHEET ONLY)
- 1) PROVIDE A WALL MOUNTED 200 AMP/3 POLE 250V NON-FUSED DISCONNECT SWITCH AND CONNECT TO FACTORY INSTALLED AIR COMPRESSOR CONTROL PANEL. COORDINATE EXACT MOUNTING LOCATION WITH COMPRESSOR INSTALLER AND EXISTING CONDITIONS PRIOR TO ROUGH-IN.
 - 2) ROUTE CONDUIT UP WALL AND OVERHEAD. COORDINATE EXACT ROUTING WITH EXISTING CONDITIONS AND BOILER PLANT STAFF PRIOR TO ROUGH-IN TO AVOID CONFLICTS.
 - 3) EXISTING MOTOR CONTROL CENTER MCC. PROVIDE ALL NECESSARY HARDWARE, BUCKET, ETC. TO MOUNT BREAKER IN MCC. COORDINATE ALL REQUIREMENTS WITH MCC MANUFACTURER.
 - 4) PROVIDE NEW WALL MOUNTED PANELBOARD ADJACENT TO MCC FOR NEW EQUIPMENT. COORDINATE EXACT MOUNTING LOCATION WITH BOILER PLANT PERSONAL AND COTR PRIOR TO ROUGH-IN TO AVOID CONFLICTS. RELOCATED ANY DEVICES, EQUIPMENT, ETC. AS NEEDED.
 - 5) EXISTING HEATING UNIT MOUNTED ABOVE CAT-WALK SYSTEM TO BE DISCONNECTED AND ABANDONED IN PLACE. REMOVE ALL CONDUIT AND CONDUCTORS FROM UNIT TO MCC COMPLETELY. REMOVE EXISTING BUCKET MOUNTED BREAKER AND REPLACE WITH NEW. REFER TO SCHEDULES ON SHEET 27-E-001 FOR ADDITIONAL INFORMATION.
 - 6) ROUTE CONDUIT OVERHEAD TO OUTSIDE WALL. RUN CONDUIT DOWN WALL AND TURN DOWN TO NEW PIPING RACK.
 - 7) INSTALL NEW CONDUIT ALONG PIPE RACK TO NEW TRANSFORMER DISCONNECT SWITCH. COORDINATE EXACT CONDUIT ROUTING WITH MECHANICAL PIPING AND SERVICES PRIOR TO ROUGH-IN. SEE PIPE RACK DETAIL THIS SHEET.
 - 8) PROVIDE NEW 6" THICK CONCRETE EQUIPMENT PAD. COORDINATE SIZE WITH NEW EQUIPMENT.
 - 9) PROVIDE NEW 400 AMP/3 POLE NEMA 3R DISCONNECT WITH 225 AMP FUSES MOUNTED ON A FRAME FOR PRIMARY DISCONNECTING MEANS. PROVIDE WITH SPARE LUGS ON LOAD SIDE OF FUSES FOR POSSIBLE CONNECTION TO BOILER TRAILER.
 - 10) PROVIDE NEW PAD MOUNTED DRY TYPE 75 KVA 208V DELTA 480Y/277 STEP UP TRANSFORMER IN NEMA 3R ENCLOSURE. PROVIDE #4 BARE COPPER CONDUCTOR CONNECTED TO 10' X 3/4" COPPER CLAD GROUND ROD, AND PIPING RACK FOR EQUIPMENT GROUNDS PER N.E.C. ARTICLE 250.

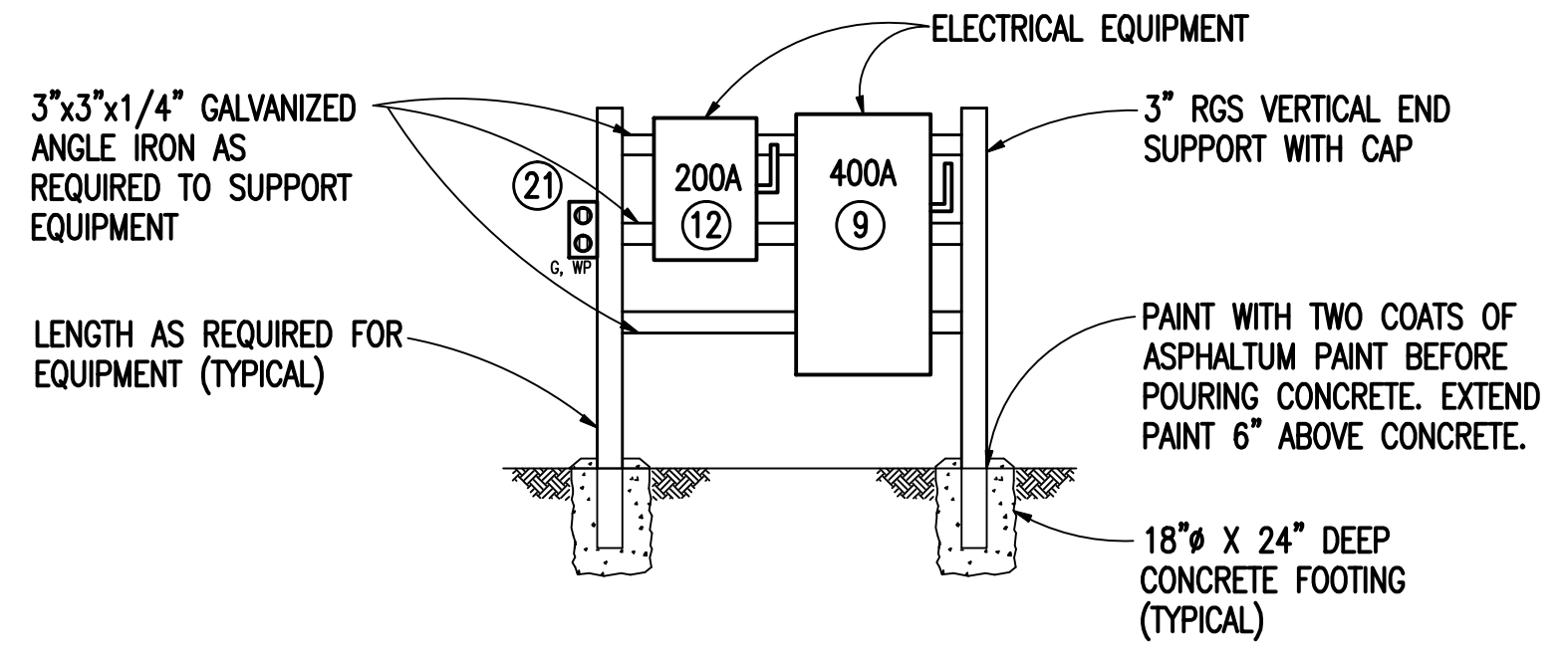
- 11) PROVIDE 3#2,#6G;1-1/2" LFMC FROM TRANSFORMER TO SECONDARY DISCONNECT SWITCH.
- 12) PROVIDE 200 AMP/3 POLE NEMA 3R FUSED DISCONNECT SWITCH WITH 110A FUSES FOR CONNECTION TO TRUCK MOUNTED BOILER.
- 13) PROVIDE EQUIPMENT MOUNTING STRUCTURE FOR MOUNTING EQUIPMENT SHOWN. REFER TO EQUIPMENT MOUNTING DETAIL ON THIS SHEET FOR ADDITIONAL INFORMATION.
COORDINATE EXACT EQUIPMENT LOCATION WITH NEW PIPING RACK AND TRAILER LOCATION PRIOR TO ROUGH-IN.
- 14) 4#4/0,#2G;2-1/2" C.
- 15) PROTECTIVE BOLLARD - SEE DETAIL ON THIS SHEET.
- 16) INSTALL THREE 3/4"x10' COPPER CLAD GROUND RODS A MIN. OF 8' APART WITH #6 SYSTEM GROUND AND BONDING PER NEC. TIE GROUNDS TO NEW PIPING RACK AND DISCONNECT SWITCHES. SEE DETAIL THIS SHEET.
- 17) 3#4/0,#2G;2-1/2" LFMC.
- 18) PROVIDE WEATHERPROOF PULL BOXES AS NEEDED. SIZE PER NEC.
- 19) PROVIDE 20A, GFCI RECEPTACLE FOR AIR DRYER. COORDINATE EXACT MOUNTING HEIGHT AND LOCATION WITH MECHANICAL PRIOR TO ROUGH-IN. CONNECT TO BREAKER IN PANEL 27C. REFER TO SCHEDULE ON SHEET 27-E-001.
- 20) PROVIDE 20A, WP, GFCI RECEPTACLE FOR MOUNTED TO EQUIPMENT STRUCTURE. COORDINATE EXACT MOUNTING HEIGHT AND LOCATION WITH DISCONNECT SWITCHES PRIOR TO ROUGH-IN. CONNECT TO BREAKER IN PANEL 27-C. REFER TO SCHEDULE ON SHEET 27-E-001.
- 22) PROVIDE LED WALL PACK LUMARK CAT# WPL4A MOUNTED TO RACK. COORDINATE EXACT LOCATION WITH PIPING PRIOR TO ROUGH-IN.



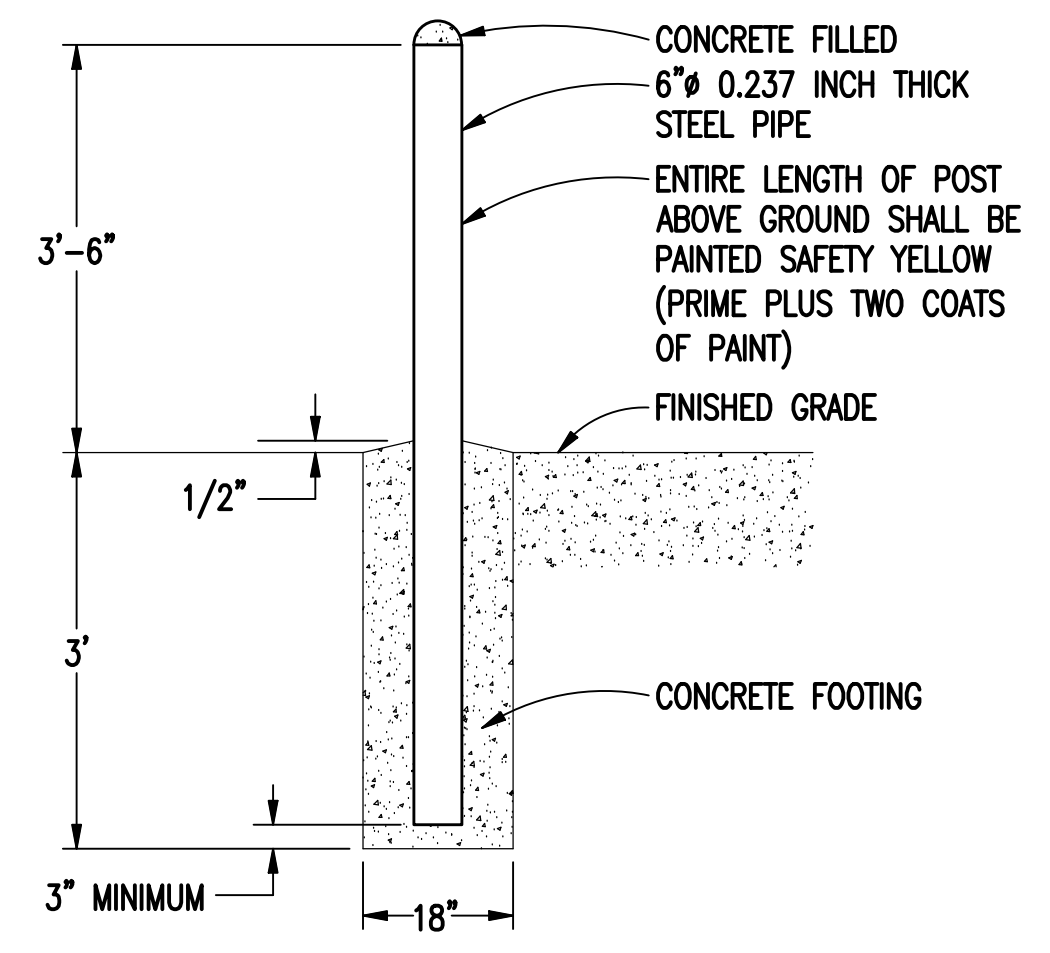
DETAIL OF DRY TYPE TRANSFORMER CONNECTIONS
SCALE: NONE



CONDUIT THRU EXTERIOR WALL DETAIL
SCALE: NONE



EQUIPMENT MOUNTING STRUCTURE NO. 1 DETAIL
SCALE: NONE



NON-REMOVEABLE BOLLARD DETAIL
SCALE: NONE

Revisions	Date	 APPLIED ENGINEERING SOLUTIONS 440 Martin Luther King, Jr. Blvd., Suite 401 Macon, Georgia 31201 (478) 314-1270 www.aes-pe.com	 KEY PLAN SCALE: NONE		Drawing Title	Project Title		Date
					BUILDING 27 ENLARGED FLOOR PLANS		STEAM AND CONDENSATE PIPING SYSTEM STUDY	JUNE 22, 2012
					FINAL SUBMITTAL		Building Number 27	Checked RBP
Location					CARL VINSON VA MEDICAL CENTER DUBLIN, GEORGIA	Drawing No. 27-E-002	Dwg. 87 Of 87	Veterans Administration