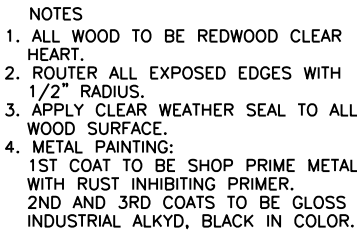


Renovated Turf Area. Contractor is to fill and grade low and depressed areas with clean sandy loam topsoil and hydroseeded area to match the adjacent existing turf. Renovated turf areas are to be scalped and verticut in two directions to prepare the seed bed and insure seed to soil contact before hydroseeding. 100% Southern Star Improved Seeded Bermudagrass, hydroseeded at a rate of four pounds per one thousand square feet (4 lbs./1,000 sq. ft.). Contact Larry Perotti, Jacklin Seed Company (800) 760-4321, or approved equal. See specifications for hydroseeding. The Contractor is responsible for hydroseeding over trenches and all disturbed areas due to construction activities. Contractor is to maintain hydroseeded areas until fully established and weed free. Contractor is to field verify.

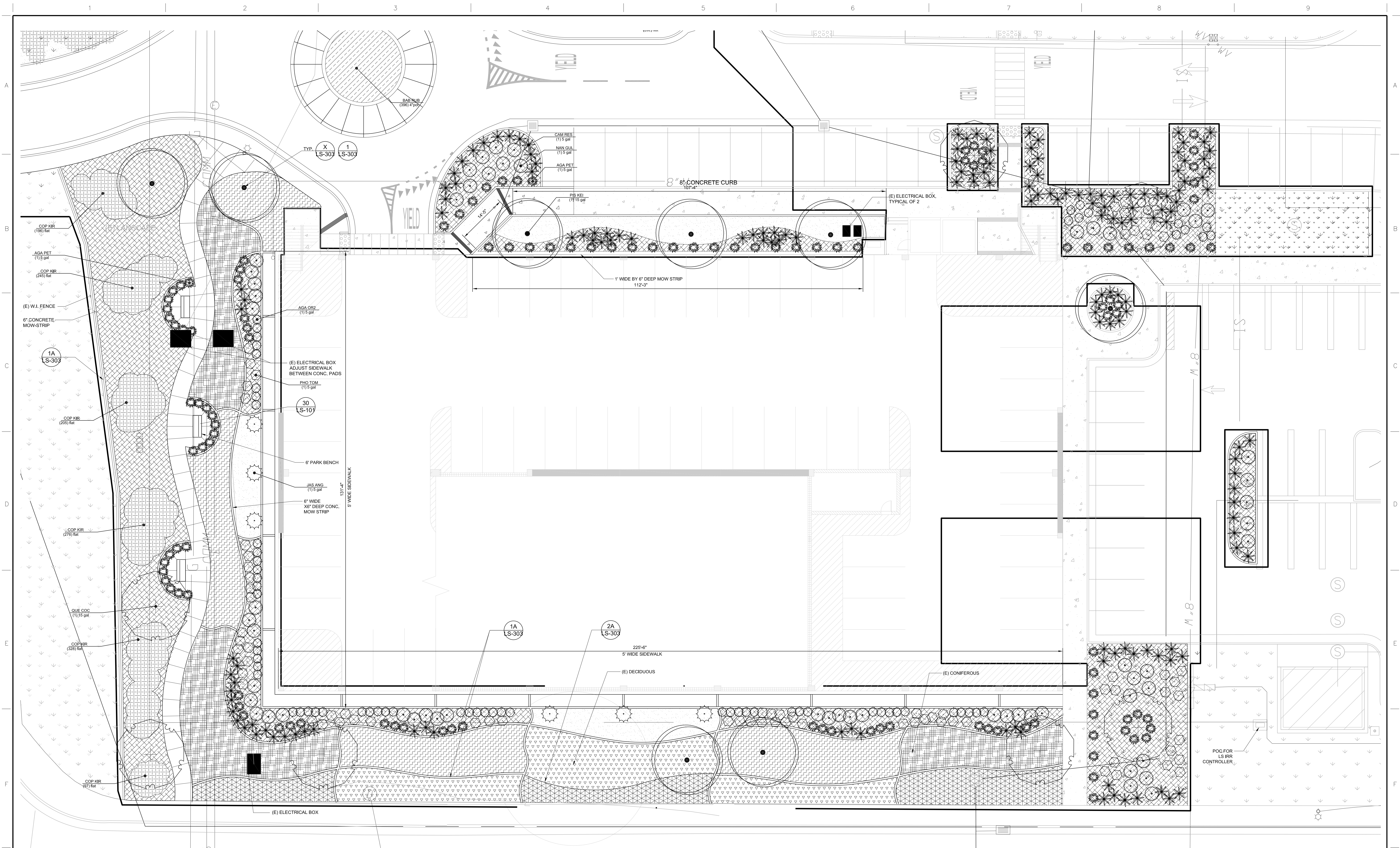
1603,079 $1\frac{1}{2}^{\circ} = 1.5^{\circ}$ 

SCALE: 1"=10'-0"



Department of  
Veterans Affairs





SCALE: 1/16"=1'-0"



**Frampton Consulting Engineers**  
Civil • Structural • Survey • Construction

895 W. Ashlan Avenue, Suite 102  
Clovis, CA 93612  
TEL: (559) 346-0800 FAX: (559) 346-0900  
WWW.FCE-ENG.COM



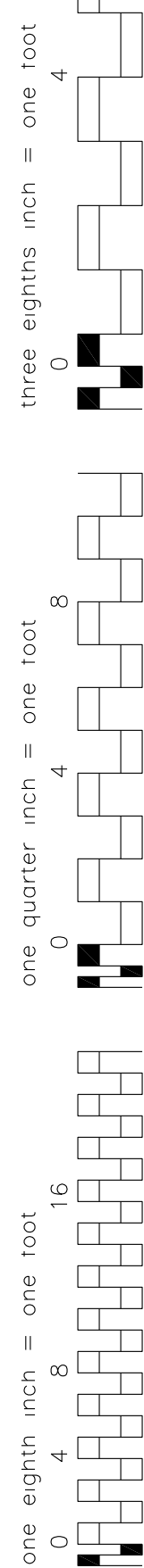
architecture + interiors

Dwg. 11 of 13




Department of  
Veterans Affairs



[illegible]

The diagram shows a hexagonal valve callout with three data points. Lines connect these points to labels on the right: 'Valve Number' for the top-right point, 'Valve Flow' for the top-left point, and 'Valve Size' for the bottom-left point.

**Consultants:**

 **Frampton Consulting Engineers**  
 Civil • Structural • Survey • Construction  
 395 W. Ashlan Avenue, Suite 102  
 Clovis, CA 93612  
 TEL: (559) 346-1800 FAX: (559) 346-0900  
 WWW.FCE-ENG.COM



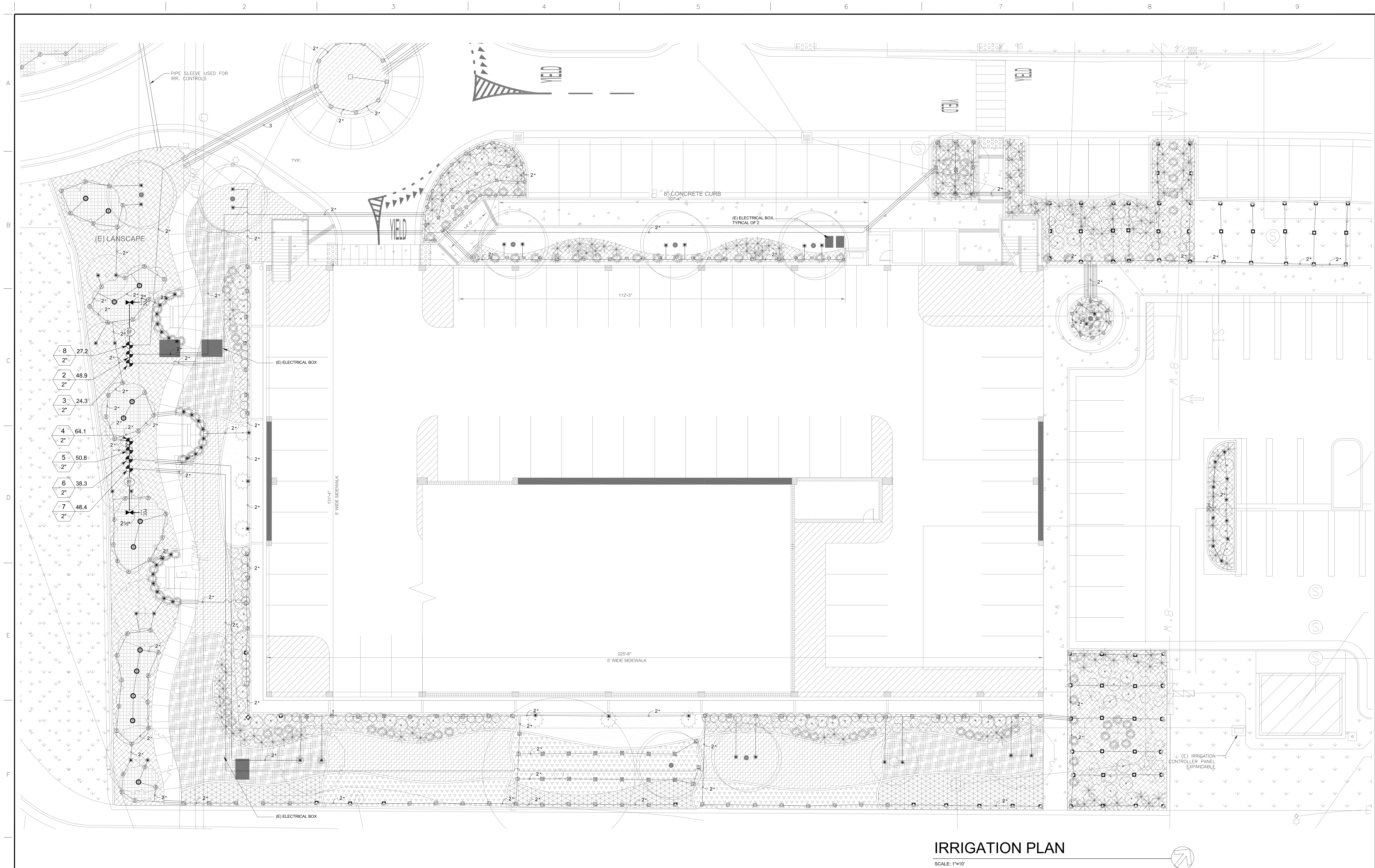
**N E**  
architecture + interiors

239 6TH STREET, SUITE 201 SAN FRANCISCO, CA 94101  
T: (415) 682-7376 F: (415) 682-7339 [www.nelarchitects.com](http://www.nelarchitects.com)




Department of  
Veterans Affairs





SCALE: 1"=10'

[illegible]

**Frampton Consulting Engineers**

Civil • Structural • Survey • Construction

895 W. Ashlan Avenue, Suite 102  
Clovis, CA 93612  
TEL: (559) 346-0800 FAX: (559) 346-0900  
WWW.FCE-ENG.COM



**MEL**  
architecture + interiors  
239 6TH STREET, SUITE 201 SAN FRANCISCO, CA 94103  
T: (415) 682-7376 F: (415) 682-7339 [www.melandinteriors.com](http://www.melandinteriors.com)

Approved: Project Directo

Drawn:  
RAT

Dwg 12 of 13



Department of  
Veterans Affairs



