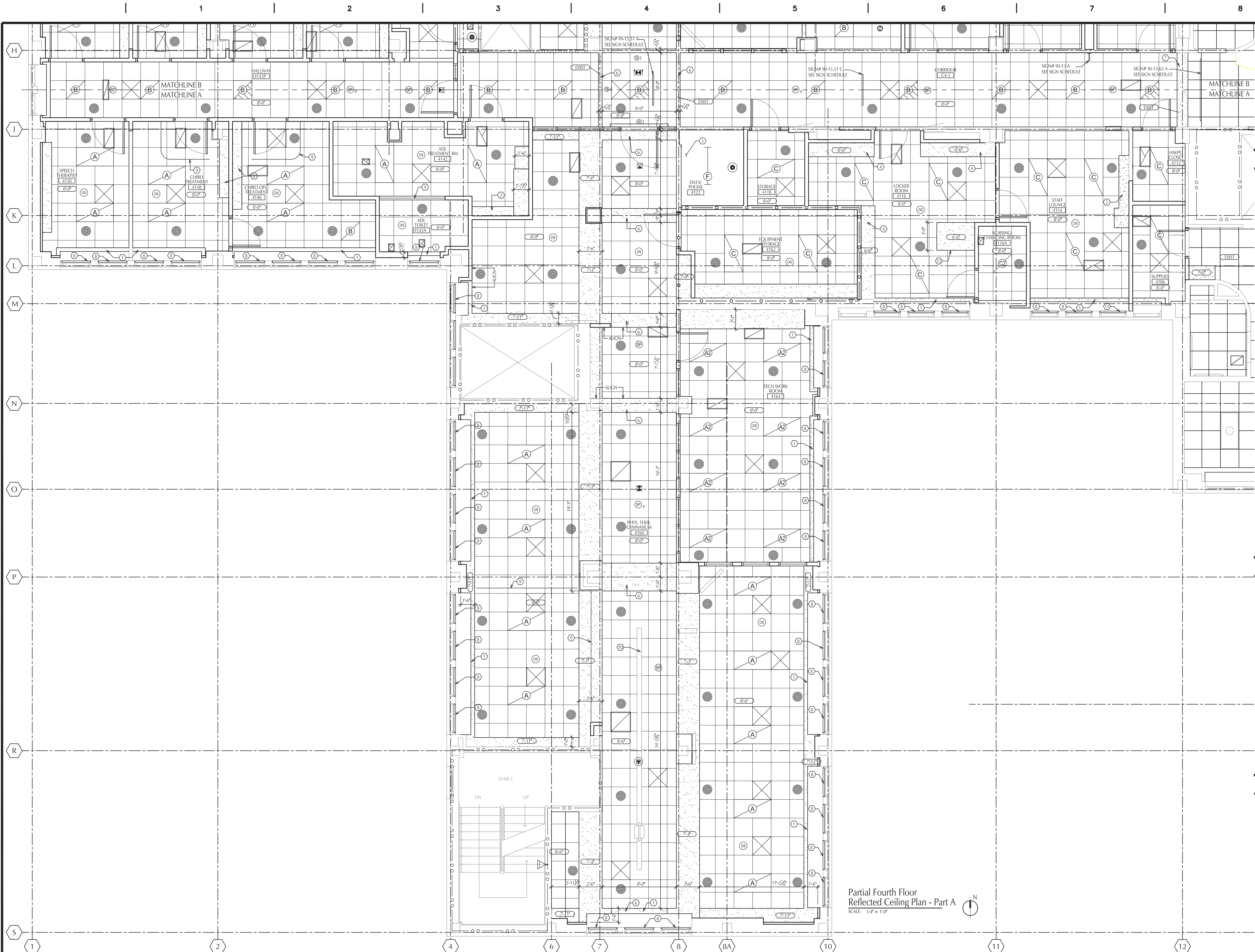


three eighths inch = one foot
one quarter inch = one foot
one half inch = one foot
three quarters inch = one foot
one inch = one foot
one and one half inches = one foot
two inches = one foot
three inches = one foot



Keynotes

- 5/8" gypsum board bulkhead per detail 3/A500. Paint to match wall finish.
- Provide 5/8" gypsum board solid over light gage framing at 24" o.c. above upper cabinets 1'-1" wide. PNT-2 finish.
- No ceiling in this space, open to structure above.
- Provide 5/8" gypsum board solid over light gage framing at 24" o.c. above lockers 1'-6" wide. Paint to match wall finish. See Detail 6/A501.
- Suspended gypsum board ceiling, PNT-3 finish, moisture resistant gypsum board.
- Gypsum board arched bulkhead, see Detail 4/A501.
- CNV will remain.
- Reinstall existing window shades after new work, per Specification section 12 24 00. Typical at all windows.
- Ceiling mounted patient privacy curtain track per Specification section 10 21 23.
- Relocated patient lift track in this room to match existing per Specification section 12 24 00.
- Install new window shades in this room to match existing per Specification section 12 24 00.
- Provide 5/8" gypsum board solid over light gage framing at 24" o.c. above lockers 1'-6" wide. Paint to match wall finish. See Detail 6/A501.
-

Symbol Legend

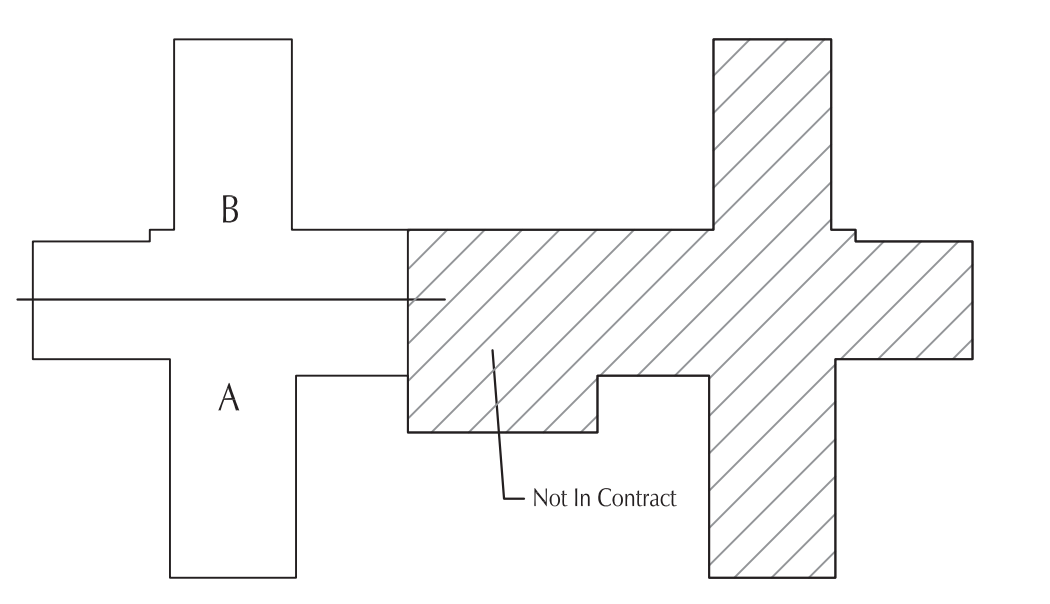
- FIRE PROTECTION SPRINKLER HEAD - CONCEALED
- CR FIRE PROTECTION SPRINKLER HEAD - CONCEALED - CLEAN ROOM
- FIRE PROTECTION SPRINKLER HEAD - UPRIGHT
- 212 FIRE PROTECTION SPRINKLER HEAD - UPRIGHT - 212 DEGREE
- FIRE PROTECTION SPRINKLER HEAD - SIDEWALL
- SUPPLY AIR CEILING DIFFUSER
- HEPA SUPPLY DIFFUSER
- RETURN AIR GRILLE
- EXHAUST AIR GRILLE
- TROFFER STYLE FIXTURE, 2x4
- TROFFER STYLE FIXTURE ON EMERGENCY POWER OR BATTERY BACK-UP
- STRIP LIGHT
- SURFACE MTD FIXTURE, 2x4
- 2x2 SURFACE MOUNTED
- TROFFER STYLE FIXTURE, 2x2
- LIGHT FIXTURE - CEILING MOUNTED
- PENDANT MOUNTED FIXTURE
- SPEAKER
- SPEAKER, FIRE ALARM
- X NURSECALL STATION
- 2 = DOME LIGHT ABOVE DOOR
- D = CORRIDOR/DOME LIGHT
- I = AUXILIARY INTERSECTIONAL DOME LIGHT
- CEILING POWER CONNECTION
- SMOKE DETECTOR

General Notes

- Fourth floor project area is a Healthcare Occupancy per NFPA 101. Occupancy of Four West is a Business Occupancy in a non-separated mixed-use.
- Light lines indicate existing construction to remain. Dark lines indicate new work.
- Field verify all dimensions and clearances prior to beginning of construction.
- Provide fire retardant treated 2x blocking at all wall mounted equipment and accessories.
- Floor structure is Two-Hour Rated Concrete Construction. Maintain fire rating and provide firestopping at all penetrations.
- Patch all abandoned holes in floors with concrete to match existing construction.
- Refer to equipment plans Q103&Q101 for additional notes on blocking for wall mounted equipment.
- See sheet A500 for Wall Type information.
- In areas where ceramic tile floor and setting bed has been removed infill with concrete topping as required to match surrounding conditions, topping slab is approximately 2 inches thick.
- In areas where partitions have been removed fill gap in concrete topping slab and grind as required to match surrounding conditions. Topping slab is approximately 2 inches thick.
- Corridor work outside of enclosed (limited access) work zones shall be at night, between the hours of 4:30 PM and 10:00 PM.

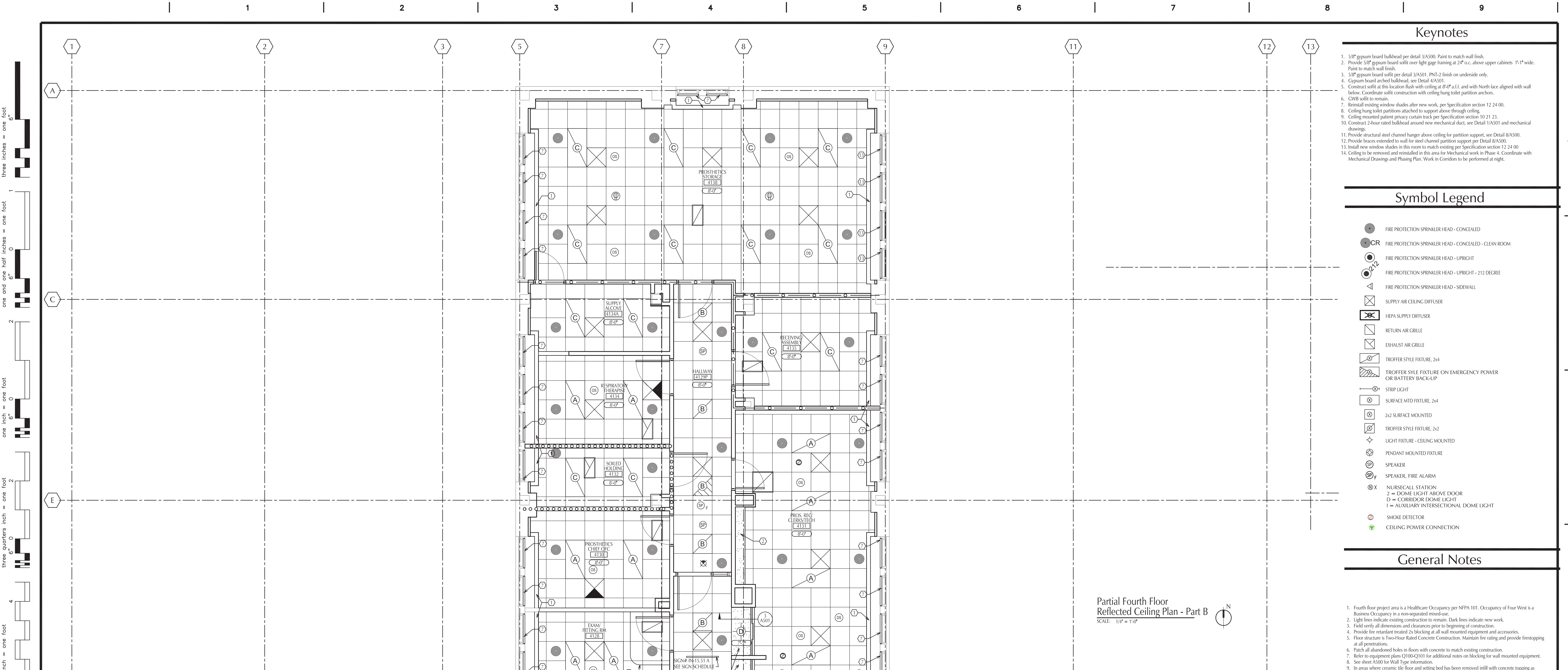
SMOKE/ FIRE/ RATED PARTITION TYPES	
.....	SMOKE RESISTIVE WALL
.....	SMOKE BARRIER WITH ONE HOUR FIRE RATING
—○—	ONE HOUR FIRE RATED WALL
—○—	TWO HOUR FIRE WALL

Key Plan



Partial Fourth Floor
Reflected Ceiling Plan - Part A
SCALE: 1/4" = 1'-0"

<div>100% Construction Documents-Revised 1/22/2014 100% Construction Documents 11/4/2013 95% Review 4/17/2013 50% Review 2/28/2013 Revisions Date</div>	<div>CONSULTANTS: MEP ASSOCIATES, LLC CONSULTING ENGINEERS PROJECT MANAGERS COMMISSIONING AUTHORITIES 2720 Arbor Court, Suite A • Eau Claire, WI 54701 715.832.5680 • Fax 715.832.5668 www.mepasociates.com • info@mepasociates.com</div>	<div>ARCHITECT/ENGINEERS: NORTHERN DESIGN WORKS 420 RAIL STREET NEGAUNEE, MI 49866 PHONE: 906-475-6616 FAX: 906-475-6954 NDW PROJECT NUMBER: 1214</div>	<div>Drawing Title Partial Fourth Floor Reflected Ceiling Plan - Part A</div> <div>Approved Project Director</div>	<div>Project Title Renovate Four West</div> <div>Location IRON MOUNTAIN, MICHIGAN</div> <div>Date November 4, 2013</div> <div>Checked RU</div> <div>Drawn MC/PW</div>	<div>Project Number 585-12-132</div> <div>Building Number 1</div> <div>Drawing Number A110</div> <div>Dwg. 13 of 100</div>	<div>Office of Construction and Facilities Management</div> <div>Department of Veterans Affairs</div>
---	--	--	---	---	---	---



Keynotes

- 5/8" gypsum board bulkhead per detail 3/A500. Paint to match wall finish.
- Provide 5/8" gypsum board soffit over light gage framing at 24" o.c. above upper cabinets. 15-17" wide. Paint to match wall finish.
- 5/8" gypsum board soffit per detail 3/A501. PNT-2 finish on underside only.
- Cypsum board arched bulkhead, see Detail 4/A501.
- Construct soffit at this location flush with ceiling at 8'-0" a.f.f. and with North face aligned with wall below. Coordinate soffit construction with ceiling hung toilet partition anchors.
- CWB soffit to remain.
- Reinstall existing window shades after new work, per Specification section 12 24 00.
- Ceiling hung toilet partitions attached to support above through ceiling.
- Ceiling mounted patient privacy curtain track per Specification section 10 21 23.
- Construct 2-hour rated bulkhead around new mechanical duct, see Detail 1/A501 and mechanical drawings.
- Provide structural steel channel hanger above ceiling for partition support, see Detail 8/A500.
- Provide braces extended to wall for steel channel partition support per Detail 8/A500.
- Install new window shades in this room to match existing per Specification section 12 24 00.
- Ceiling to be removed and reinstalled in this area for Mechanical work in Phase 4. Coordinate with Mechanical Drawings and Phasing Plan. Work in Corridors to be performed at night.

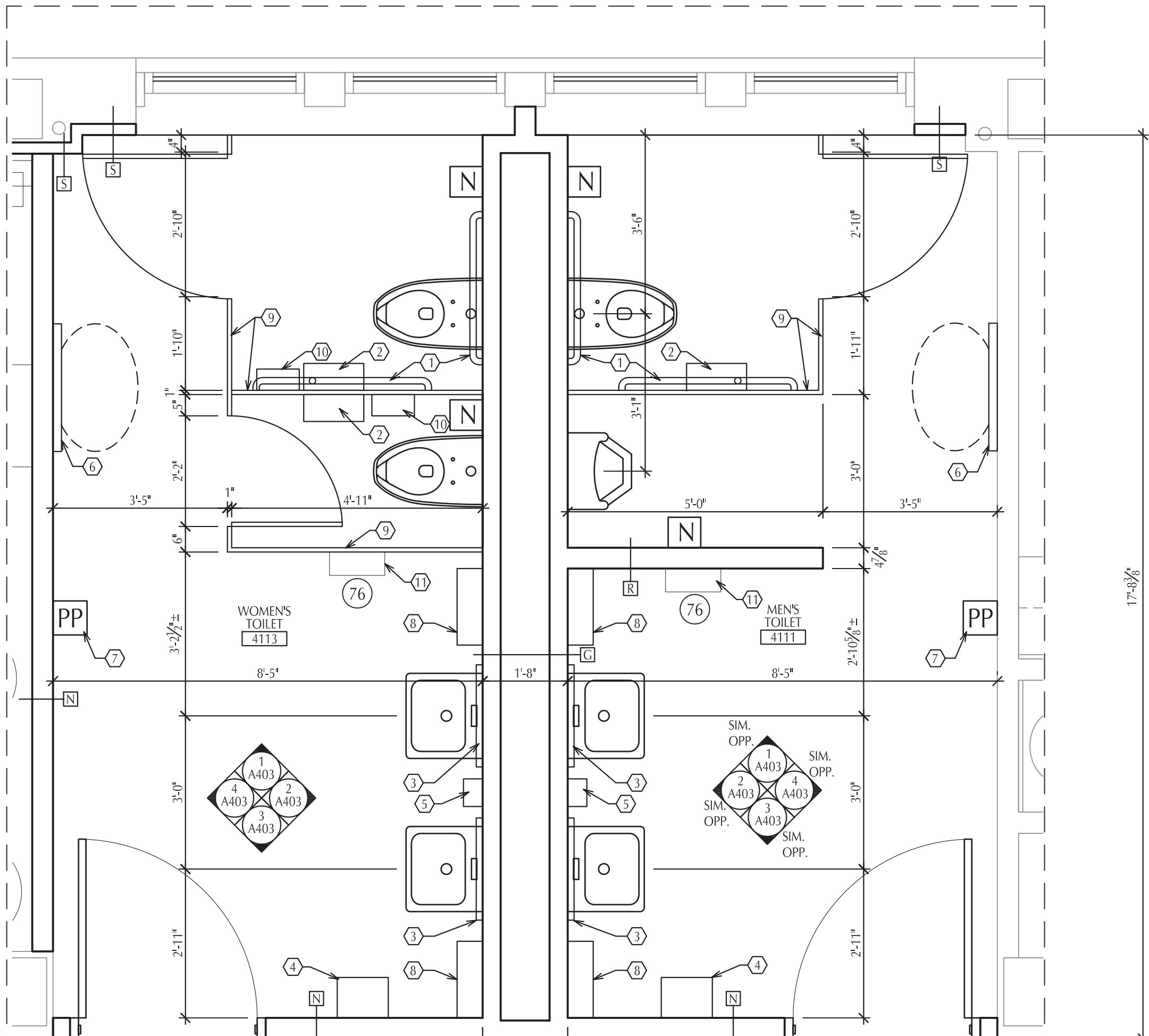
Symbol Legend

- FIRE PROTECTION SPRINKLER HEAD - CONCEALED
- CR FIRE PROTECTION SPRINKLER HEAD - CONCEALED - CLEAN ROOM
- FIRE PROTECTION SPRINKLER HEAD - UPRIGHT
- FIRE PROTECTION SPRINKLER HEAD - UPRIGHT - 212 DEGREE
- FIRE PROTECTION SPRINKLER HEAD - SIDEWALL
- SUPPLY AIR CEILING DIFFUSER
- HEPA SUPPLY DIFFUSER
- RETURN AIR GRILLE
- EXHAUST AIR GRILLE
- TROFFER STYLE FIXTURE, 2x4
- TROFFER STYLE FIXTURE ON EMERGENCY POWER OR BATTERY BACK-UP
- STRIP LIGHT
- SURFACE MTD FIXTURE, 2x4
- 2x2 SURFACE MOUNTED
- TROFFER STYLE FIXTURE, 2x2
- LIGHT FIXTURE - CEILING MOUNTED
- PENDANT MOUNTED FIXTURE
- SPEAKER
- SPEAKER, FIRE ALARM
- NURSECALL STATION
- 2 = DOME LIGHT ABOVE DOOR
- D = CORRIDOR DOME LIGHT
- I = AUXILIARY INTERSECTIONAL DOME LIGHT
- SMOKE DETECTOR
- CEILING POWER CONNECTION

General Notes

- Fourth floor project area is a Healthcare Occupancy per NFPA 101. Occupancy of Four West is a Business Occupancy in a non-separated mixed-use.
- Light lines indicate existing construction to remain. Dark lines indicate new work.
- Field verify all dimensions and clearances prior to beginning of construction.
- Provide fire retardant treated 2x blocking at all wall mounted equipment and accessories.
- Floor structure is Two-Hour Rated Concrete Construction. Maintain fire rating and provide firestopping at all penetrations.
- Patch all abandoned holes in floors with concrete to match existing construction.
- Refer to equipment plans Q100-Q101 for additional notes on blocking for wall mounted equipment.
- See sheet A500 for Wall Type information.
- In areas where existing tile floor and setting bed has been removed infill with concrete topping as

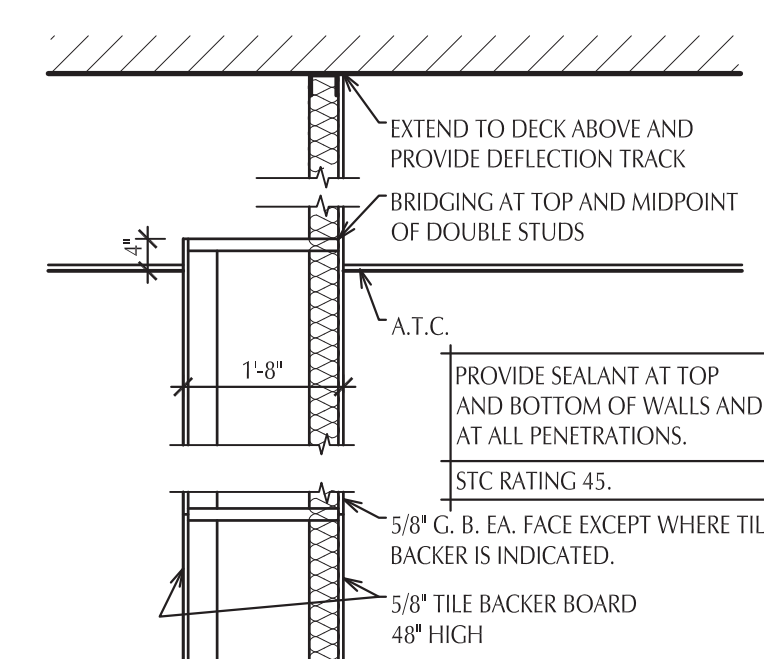
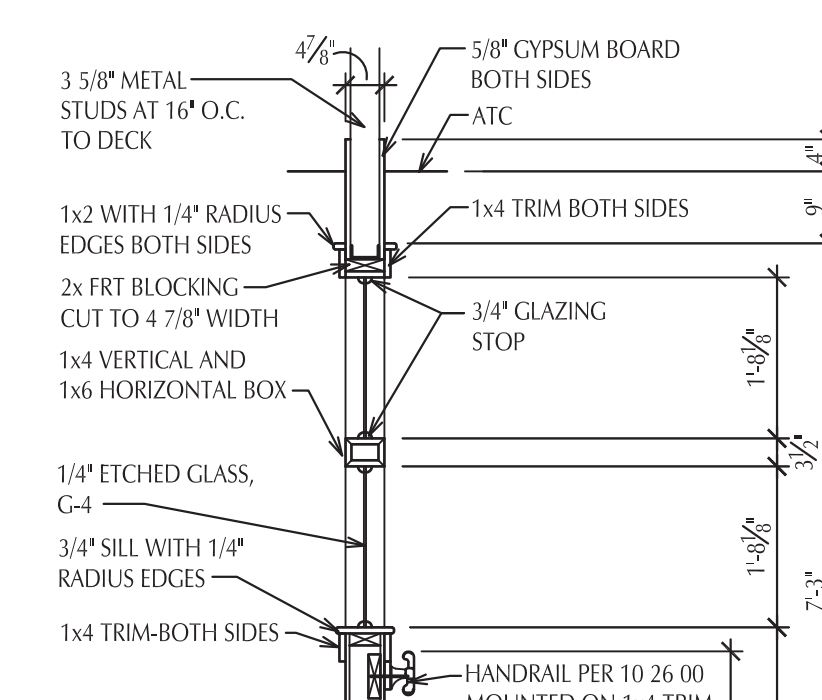
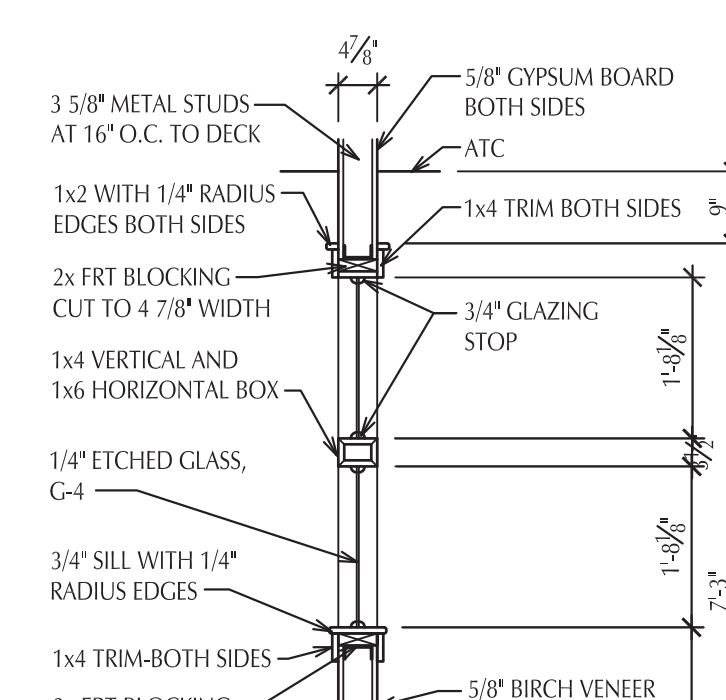
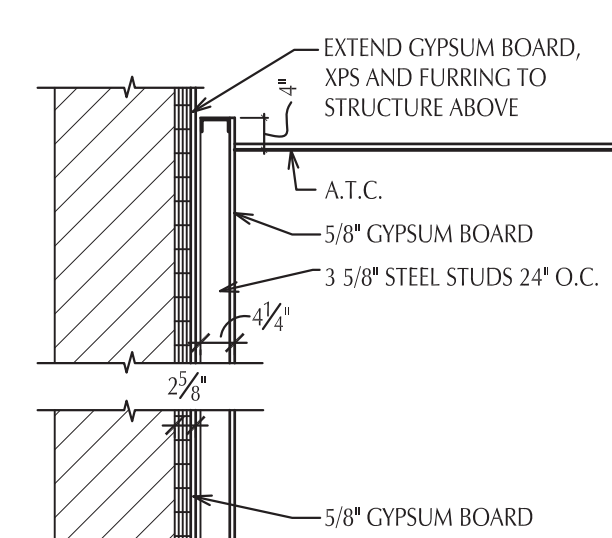
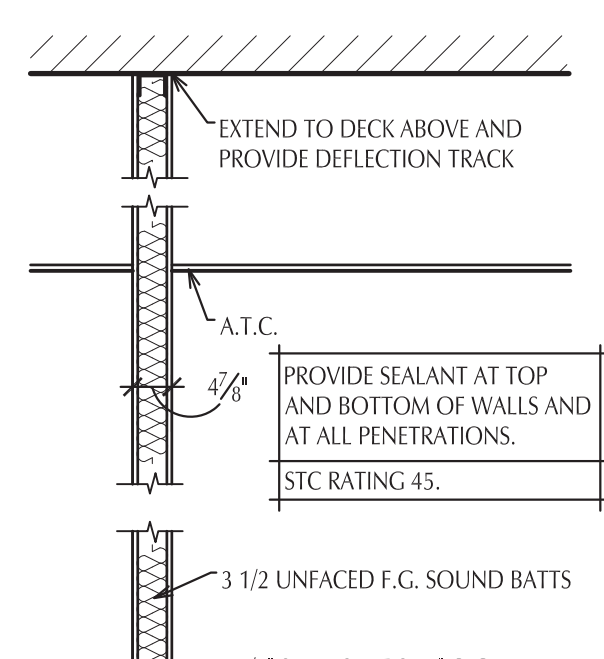
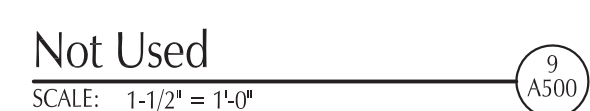
three quarters inch = one foot
6" 0 2
one inch = one foot
6" 0 2
one and one half inches = one foot
6" 0 2
three inches = one foot
6" 0 2



Keynotes

1. Grab Bars, Mount at 34" a.f.f. Provide 36" long bar behind w.c. mounted 0" from corner and 42" long bar on adjacent wall mounted 12" from corner. In addition, provide a vertical grab bar 18" long mounted with the bottom of the bar at 41" a.f.f. and the center line 41" from the rear wall.
2. Toilet Paper Dispenser - Mounting Height 2" below the grab bar to the top of the dispenser. Mount 9" from the front of the water closet to the centerline of the dispenser.
3. Provide 24" wide x 40" high mirror with reflective surface mounted 40" a.f.f.
4. Paper Towel Dispenser - Mounting height 48" Max to dispensing lever, 48" Max to dispenser opening if mounted above counter or sink.
5. Soap Dispenser - Mounting height 48" Max to dispensing lever, 48" Max to dispenser opening if mounted above counter or sink.
6. Provide surface-mounted baby changing station. Provide fire retardant treated 2x12 blocking in wall at location shown in accordance with manufacturers installation instructions. Mount at 33 1/2" a.f.f. to the top of the changing platform.
7. Door operator push plate, see electrical.
8. Provide 6"x18" Stainless Steel Shelf mounted 34" A.F.F.
9. Provide Toilet Partition per Specification 10 21 13.
10. Provide sanitary napkin disposal. Mount 30" to top of disposal and 24" from centerline to front of the water closet.
11. Sharps disposal, Equipment item #76, mount at 48" Max to disposal opening.

General Notes



1

2

3

4

5

6

7

8

9

Signage Schedule

LOCATION		SIGN TYPES						Remarks
NUMBER	ROOM NAME	Room ID	Wall Mounted	Door Mounted	Ceiling Mounted	Split Mounted	Text if Different From Room Name	
4109	Staff Toilet	IN-04.02						
4111	Men's Toilet	IN-09.01						
4111	Men's Toilet		IN-20.01					8
4112	Housekeeping	IN-04.02						
4113	Women's Toilet	IN-09.02						
4113	Women's Toilet		IN-20.01					8
4114	Staff Lounge	IN-04.02						
4115	PM&R Chief Office	IN-04.04						
4116	Locker Room	IN-04.02						
4116A	Nursing/Changing Room	IN-04.02						
4117	PM&R Reception	IN-03.01						
4118	Storage	IN-04.02						
4119	Shared Waiting					IN-16.51 B	P M & R Check-In	1,2
4122	Data/Phone	IN-03.01						
4128	Exam/Fitting Rm	IN-07.01						
4129P	Hallway		IN-20.01					8
4130	Prosthetics Chief Office	IN-04.01						
4131	Prosth. Reception/Clerk/Tech	IN-04.02					Prosthetics Work Room	
4131	Prosth. Reception/Clerk/Tech		IN-20.01					8
4132	Soiled Holding	IN-04.02						
4134	Respiratory Therapy	IN-04.02						
4134A	Supply Alcove	IN-04.02		IN-01.05			Respiratory Supply Room	3
4135	Receiving/Assembly	IN-04.02		IN-01.05				3
4138	Prosthetics Storage	IN-04.02		IN-01.05				3
4141	Clean Supply	IN-04.02						
4142	ADL Treatment Rm	IN-07.01						
4142A	ADL Toilet							
4143	Storage Alcove							
4143A	Linens Chute	IN-04.02						
4143P	Hallway		VHFE15A					6
4143P	Hallway		IN-01.02					7
4143P	Hallway		IN-20.01					8
4145	Treatment Room	IN-07.03					Treatment Room A	
4146	Chiropactic Office/Treatment	IN-07.03					Chiropactic Treatment A	
4147	Treatment Room	IN-07.03					Treatment Room B	
4148	Chiropactic Treatment	IN-07.03					Chiropactic Treatment B	
4149	Treatment Room	IN-07.03					Treatment Room C	
4150	Speech Therapy	IN-07.03						
4151	Treatment Room	IN-07.03					Treatment Room D	
4160	Physical Therapy Gymnasium	IN-04.02	IN-01.10 C					
4160	Physical Therapy Gymnasium		VHFE15A					6
4160	Physical Therapy Gymnasium		IN-01.02					7
4160	Physical Therapy Gymnasium		IN-20.01					8
4162	Equipment Storage	IN-04.02		IN-01.05				3,5
4164	Tech Work Room	IN-04.02						5
4186	Supplies	IN-04.02						9

C4-1	Corridor	IN-13A				Restrooms	4
C4-1	Corridor			IN-15.62 A		Physical Medicine & Rehabilitation Prosthetics, Chiropactic	1,4
C4-1	Corridor			IN-15.51 C		Physical Medicine & Rehabilitation Prosthetics	1,4
C4-1	Corridor			IN-15.51 A		Prosthetics	1,4
C4-1	Corridor	IN-20.01					8
C4-1	Corridor	IN-20.01					8
C4-1	Corridor	IN-20.01					8
C4-2	Corridor	IN-01.10 C					
C4-2	Corridor			IN-15.51 A		Prosthetics	1,4
C4-2	Corridor		VHFE15A				6
C4-2	Corridor	IN-01.02					7
C4-2	Corridor	IN-20.01					8
C4-2	Corridor				IN-16.51 B	Prosthetics Check-In	1,2

Finish Schedule

ROOMS		CEILING	FLOOR	WALLS	TRIM	NOTES
NUMBER	ROOM NAME					
4109	Staff Toilet	Ex	Ex	Ex	Ex	--
4111	Men's Toilet	ATC-1	PE-1	PNT-1/WT-1	CB-1	--
4112	Housekeeping	ATC-2	PE-1	PNT-1/WT-1	CB-1	--
4113	Women's Toilet	ATC-1	PE-1	PNT-1/WT-1	CB-1	--
4114	Staff Lounge	ATC-1	SVT-1	PNT-1	RB-1	--
4115	PM&R Chief Office	ATC-1	CPT-1	PNT-1	RB-1	--
4116	Locker Room	ATC-1	CPT-1	PNT-1	RB-1	--
4116A	Nursing/Changing Room	ATC-1	CPT-1	PNT-1	RB-1	--
4117	PM&R Reception	ATC-1	CPT-1	PNT-1	RB-1	--
4118	Storage	ATC-1	VCT-1	PNT-1	RB-1	--
4119	Shared Waiting	ATC-1	CPT-1	VWC-1	RB-1	--
4122	Data/Phone	N/A	VCT-1	PNT-1	RB-1	--
4128	Exam/Fitting	ATC-1	SVT-1	PNT-1	RB-1	--
4129P	Hallway	ATC-1	SVT-1, SVT-2	VWC-1	RB-1	--
4130	Prosthetics Chief Office	ATC-1	CPT-1	PNT-1	RB-1	--
4131	Prosth. Reception/Clerk/Tech	ATC-1	CPT-1	PNT-1	RB-1	--
4132	Soiled Holding	ATC-1	VCT-1	PNT-1	RB-1	--
4134	Respiratory Therapy	ATC-1	SVT-1	PNT-1	RB-1	--
4134A	Supply Alcove	ATC-1	SVT-1	PNT-1	RB-1	--
4135	Receiving/Assembly	ATC-1	VCT-1	PNT-1	RB-1	--
4138	Prosthetics Storage	ATC-1	VCT-1	PNT-1	RB-1	--
4141	Clean Supply	ATC-1	Ex	PNT-1	Ex	--
4142	ADL Treatment Rm	ATC-1	SVT-1	PNT-1	RB-1	--
4142A	ADL Toilet	ATC-1	SVT-1	PNT-1	RB-1	--
4143	Storage Alcove	ATC-1	SVT-2	PNT-1	RB-1	--
4143A	Linens Chute	ATC-2	SVT-2	PNT-1	RB-1	--
4143P	Hallway	ATC-1	SVT-1, SVT-2	VWC-1/PNT-2	RB-1	3
4145	Treatment Room	ATC-1	SVT-1	PNT-1	RB-1	--
4146	Chiropactic Office/Treatment	ATC-1	SVT-1	PNT-1	RB-1	--
4147	Treatment Room	ATC-1	SVT-1	PNT-1	RB-1	--
4148	Chiropactic Treatment	ATC-1	SVT-1	PNT-1	RB-1	--
4149	Treatment Room	ATC-1	SVT-1	PNT-1	RB-1	--
4150	Speech Therapy	ATC-1	CPT-1	PNT-1	RB-1	--
4151	Treatment Room	ATC-1	SVT-1	PNT-1	RB-1	--
4160	Physical Therapy Gymnasium	ATC-1, GBC-1	SVT-1, SVT-2	PNT-1, PNT-2	RB-1	2
4162	Equipment Storage	ATC-1	VCT-1	PNT-1	RB-1	--
4164	Tech Work Room	ATC-1	SVT-1	PNT-1	RB-1	--
4186	Supplies	ATC-1	VCT-1	PNT-1	RB-1	--
C4-1	Corridor	ATC-1	SVT-1,2 VCT-2,3,4	VWC-1, PNT-2	RB-1	2,4,5
C4-2	Corridor	ATC-1	SVT-1, SVT-2	VWC-1, PNT-2	RB-1	2
ST-1	Stair 1	ATC-1	VCT-1	PNT	RB-1	6

Door Schedule

NUMBER	FRAME		DOOR							DETAILS							REMARKS
	TYPE	MATERIAL	TYPE	MATERIAL	NUMBER	WIDTH	HEIGHT	THICKNESS	GLAZING	HEAD	JAMB	SILL	MULLION	FIRE RATING	HDM SET		
4109.0	EX	HM	Ex.	Ex.	1	3'-0"	7'-0"	1 3/4"	-	-	-	-	-	-	-	--	
4111.0	1	HM	F	SCW	1	3'-0"	7'-0"	1 3/4"	-	-	6/A500	--	-	-	1	--	
4112.0	1	HM	F	SCW	1	3'-0"	7'-0"	1 3/4"	-	-	6/A500	--	-	-	2	--	
4113.0	1	HM	F	SCW	1	3'-0"	7'-0"	1 3/4"	-	-	6/A500	--	-	-	1	--	
4114.0	EX	HM	Ex.	Ex.	1	3'-0"	7'-0"	1 3/4"	-	-	-	--	-	-	-	--	
4115.0	1	HM	G	SCW	1	3'-0"	7'-0"	1 3/4"	G-2	-	6/A500	--	-	-	3	--	
4116.0	EX	HM	F	SCW	1	3'-0"	7'-0"	1 3/4"	-	-	-	--	-	-	19	3	
4116.2	1	HM	F	SCW	1	3'-0"	7'-0"	1 3/4"	-	-	6/A500	--	-	-	5	--	
4116.3	1	HM	F	SCW	1	3'-0"	7'-0"	1 3/4"	-	-	6/A500	--	-	-	4	--	
4117.0	1	HM	G	SCW	1	3'-0"	7'-0"	1 3/4"	G-2	-	6/A500	--	-	-	3	--	
4118.0	1	HM	F	SCW	1	3'-0"	7'-0"	1 3/4"	-	-	6/A500	--	-	-	2	--	
4122.0	EX	HM	Ex.	Ex.	1	3'-0"	7'-0"	1 3/4"	-	-	-	--	-	-	-	--	
4128.0	1	HM	F	SCW	1	3'-0"	7'-0"	1 3/4"	-	-	6/A500	--	-	-	6	--	
4129.0	3	HM	G	SCW	1	3'-0"	7'-0"	1 3/4"	G-2	-	6/A500	--	-	-	7	--	
4130.0	1	HM	G	SCW	1	3'-0"	7'-0"	1 3/4"	G-2	-	6/A500	--	-	-	3	--	
4131.0	1	HM	G	SCW	1	3'-0"	7'-0"	1 3/4"	G-2	-	6/A500	--	-	-	3	--	
4132.0	1	HM	F	SCW	1	3'-0"	7'-0"	1 3/4"	-	-	6/A500	--	-	-	8	--	
4134.0	1	HM	F	SCW	1	3'-0"	7'-0"	1 3/4"	-	-	6/A500	--	-	-	9	--	
4134.1	1	HM	F	SCW	1	3'-0"	7'-0"	1 3/4"	-	-	6/A500	--	-	-	45	8 2	
4135.0	1	HM	F	SCW	1	3'-0"	7'-0"	1 3/4"	-	-	6/A500	--	-	-	45	8	
4138.0	1	HM	N	SCW	1	3'-0"	7'-0"	1 3/4"	G-3	-	6/A500	--	-	-	45	8	
4141.0	EX	HM	Ex.	Ex.	1	3'-0"	7'-0"	1 3/4"	-	-	-	--	-	-	-	--	
4142.0	1	HM	F	SCW	1	3'-0"	7'-0"	1 3/4"	G-2	-	6/A500	--	-	-	-	--	
4143.0	3	HM	G	SCW	1	3'-0"	7'-0"	1 3/4"	G-2	-	6/A500	--	-	-	11	--	
4143.1	1	HM	F	SCW	1	3'-0"	7'-0"	1 3/4"	-	-	6/A500	--	-	-	45	8	
4145.0	1	HM	F	SCW	1	3'-0"	7'-0"	1 3/4"	-	-	6/A500	--	-	-	12	--	
4146.0	1	HM	F	SCW	1	3'-0"	7'-0"	1 3/4"	-	-	6/A500	--	-	-	12	--	
4146.1	1	HM	F	SCW	1	3'-0"	7'-0"	1 3/4"	-	-	6/A500	--	-	-	12	--	
4147.0	1	HM	F	SCW	1	3'-0"	7'-0"	1 3/4"	-	-	6/A500	--	-	-	12	--	
4148.0	1	HM	F	SCW	1	3'-0"	7'-0"	1 3/4"	-	-	6/A500	--	-	-	12	--	
4149.0	1	HM	F	SCW	1	3'-0"	7'-0"	1 3/4"	-	-	6/A500	--	-	-	12	--	
4150.0	1	HM	F	SCW	1	3'-0"	7'-0"	1 3/4"	-	-	6/A500	--	-	-	12	--	
4151.0	1	HM	F	SCW	1	3'-0"	7'-0"	1 3/4"	-	-	6/A500	--	-	-	12	--	
4160.0	4	AL	FG	AL	1	4'-0"	7'-0"	1 3/4"	G-2	10/A501	--	-	-	-	13	1	
4162.0	1	HM	F	SCW	1	3'-0"	7'-0"	1 3/4"	-	-	6/A500	--	-	-	45	14	
4164.0	1	HM	G	SCW	1	3'-0"	7'-0"	1 3/4"	G-2	-	6/A500	--	-	-	15	--	
4186.0	1	HM	F	SCW	1	3'-0"	7'-0"	1 3/4"	-	-	6/A500	--	-	-	2	--	
C4-1.0	1	Ex.	Ex.	Ex.	1	2'-0"	7'-0"	1 3/4"	-	-	-	--	-	-	90	--	
ST1.0	EX	HM	EX	EX	1	3'-0"	6'-0"	1 3/4"	-	-	-	--	-	-	90	--	
ST5.0	EX	HM	EX	EX	1	3'-0"	6'-0"	1 3/4"	-	-	-	--	-	-	90	--	

Key to Door Schedule

HM	Hollow metal (steel)
HMT	Hollow metal - insulated
AL	Aluminum
SCW	Solid core wood veneer
G-1	1/2" Clear glass
G-2	1/2" Tempered glass
G-3	45 minute fire rated safety glazing
G-4	Etched 1/4" tempered glass
G-5	Insulated glazing
G-6	Insulated obscure glazing

Door Schedule Remarks

- See 11/A400 for Aluminum frame dimensions
- Lock secures room 4138.
- Paint frame PNT-3. Patch and repair holes from removed hardware.

Key to Finish Schedule

CEILING FINISHES	
ATC-1	Acoustical tile ceiling.
ATC-2	Vinyl Covered Gypsum Board Ceiling Tile.
CBC-1	5/8" gypsum board ceiling applied to suspended framing. PNT-3 finish.
FLOOR FINISHES	
VCT-1	Vinyl composition tile, color 1
VCT-2	Vinyl composition tile, color 2
VCT-3	Vinyl composition tile, color 3
VCT-4	Vinyl composition tile, color 4
SVT-1	Woodgrain Solid Vinyl Tile, Color 1
SVT-2	Woodgrain Solid Vinyl Tile, Color 2
CPI-1	Carpet.
PT-1	2x2 porcelain mosaic tile.
WALL FINISHES	
VWC-1	Vinyl wall covering.
WC-1	Wainscoting
PNT-1	Latex paint, eggshell finish, color 1.
PNT-2	Latex paint, eggshell finish, color 2.
PNT-3	Latex paint, semi-gloss finish, color 3.
WT-1	6x6 matte wall tile, color 1 to 3-4/8", color 2 3-4/8" to 3-6", color 1 3-6" to 4-4/8"
TRIM	
RIB-1	Rouliflex covered base, color 1.
CB-1	Cove tile base, matte finish, color 1.

1

2

3

4

5

6

7

8

9

Equipment Schedule

ID	Equipment	Length	Width	Height	Department	Location	Power	Data	Notes	Furnish/Install
01	WIRE SHELVING	72"	24"	72"	PROSTHETICS	STORAGE			EXISTING ON 5TH FL	VV
02	WIRE SHELVING	48"	24"	72"	PROSTHETICS	REC/ASSEMBLY, RESP. STOR.			EXISTING ON 5TH FL	VV
03	WIRE SHELVING	36"	24"	72"	PROSTHETICS	SOILED HOLDING			EXISTING ON 5TH FL	VV
04	SUPPLY CABINET	48"	16"	72"	PROSTHETICS	STORAGE, EXAM/FITTING			EXISTING ON 5TH FL	VV
05	MAIL CART	48"	32"	37"	PROSTHETICS	REC/ASSEMBLY			EXISTING ON 5TH FL	VV
06	EXAM TABLE	48"	32"	H	PROSTHETICS	EXAM/FITTING			EXISTING ON 5TH FL	VV
07	LATERAL FILE 5 DR	42"	18"	H	PROSTHETICS	FILE STORAGE				VV
08	PRINTER/COPIER/FAX	56"	24"	H	PMR, PROSTHETICS	RECEPTION, CLERKS	X	X		VV
09	SCANNER	24"	16"	H	PROSTHETICS	CLERKS	X	X		VV
10	COMPUTER WORKSTATION	L	W	H	VARIOUS	VARIOUS	X	X		VV
11	REFRIGERATOR	L	W	H	COMMON, PMR	LOUNGE, ADL TREATMENT	X			VV
12	MICROWAVE	15"	20"	12"	COMMON, PMR	LOUNGE, ADL TREATMENT	X			VV
13	RANGE	L	30"	H	PMR	ADL TREATMENT ROOM	X		KEYED POWER	VV
14	SIDE CHAIR	L	W	H	VARIOUS	VARIOUS				VV
15	RECLINER	L	W	H	PMR	ADL TREATMENT ROOM				VV
16	UNDERCOUNTER FREEZER	24 1/2"	21 1/2"	33 1/2"	CHIROPRACTICS	TREATMENT	X			VV
17	CHIROPRACTIC TABLE	90"	30"	H	CHIROPRACTICS	TREATMENT	X			VV
18	PATIENT CHAIR	L	W	H	COMMON	WAITING				VV
19	FLATSCREEN TV	L	W	H	PM&R	GYMNASIUM	X	X		VV
20	EXAM TABLE	58"	27"	H	PM&R	TREATMENT ROOM	X		EXISTING ON 5TH FL	VV
21	TRACTION TABLE	77"	28"	H	PM&R	TREATMENT ROOM	X		EXISTING ON 5TH FL	VV
22	ULTRASOUND MACHINE	24"	24"	H	PM&R	TREATMENT ROOM	X		EXISTING ON 5TH FL	VV
23	E-STIM CART	24"	24"	H	PM&R	TREATMENT ROOM	X		EXISTING ON 5TH FL	VV
24	HOT PACK MACHINE	L	W	H	PM&R	STORAGE ALCOVE	X			VV
25	COLD PACK MACHINE	L	W	H	PM&R	STORAGE ALCOVE	X			VV
26	PARAFFIN WAX TABLE UNIT	24"	12"	H	PM&R	TREATMENT ROOM	?		EXISTING ON 5TH FL	VV
27	KAYPENTAX VISI-PITCH	9"	8"	12"	PM&R	SPEECH THERAPIST	X		EXISTING ON 5TH FL	VV
28	VITALSTIM XPERIA	18"	18"	H	PM&R	EQUIP. STOR.	X		EXISTING ON 5TH FL	VV
29	KAYPENTAX SWALLOW WORKSTATION	35"	23"	60"	PM&R	EQUIP. STOR.	X		EXISTING ON 5TH FL	VV
30	HAMPER, DOUBLE	38"	19"	39"	PM&R	GYMNASIUM			EXISTING ON 5TH FL	VV
31	DESK WORKSTATION	72"	60"	30"	CHIRO, PROSTH	OFFICE, RESP. THER.				VV
32	DESK WORKSTATION	84"	96"	30"	PROSTHETICS	CLERKS				VV
33	DESK WORKSTATION	72"	72"	30"	PMR, PROSTH	CHIEF OFFICE				VV
34	ROUND TABLE	36"	36"	30"	PMR	ADL TREATMENT, CHIEF OFFICE				VV
35	ROUND TABLE	42"	42"	30"	PROSTHETICS	CHIEF OFFICE			EXISTING ON 5TH FL	VV
36	ROUND TABLE	48"	48"	30"	COMMON	STAFF LOUNGE				VV
37	not used									
38	not used									
39	BACK PROJECT	44"	28"	74"	PM&R	GYMNASIUM			EXISTING ON 5TH FL	VV
40	SCHWINN AIRDYNE	50"	22.5"	30"	PM&R	GYMNASIUM			EXISTING ON 5TH FL	VV
41	SCOTT PRO II	61"	30"	62"	PM&R	GYMNASIUM	X		EXISTING ON 5TH FL	VV
42	TRAINING STAIRS	65"	33.5"	60"	PM&R	GYMNASIUM			EXISTING ON 5TH FL	VV
43	MAT TABLE	86"	48"	H	PM&R	GYMNASIUM			EXISTING ON 5TH FL	VV
44	KOREBALANCE	49"	35"	74"	PM&R	GYMNASIUM	X		EXISTING ON 5TH FL	VV
45	NUSTEP 4000	60"	28"	43"	PM&R	GYMNASIUM	X		EXISTING ON 5TH FL	VV
46	DIP RICKSHAW	70"	44"	48"	PM&R	GYMNASIUM			EXISTING ON 5TH FL	VV
47	BIOSTEP	65"	28"	47"	PM&R	GYMNASIUM	X		EXISTING ON 5TH FL	VV
48	CABLE COLUMN	42"	48"	H	PM&R	GYMNASIUM			EXISTING ON 5TH FL	VV
49	LEG PRESS	70"	45"	H	PM&R	GYMNASIUM			EXISTING ON 5TH FL	VV
50	LEG CURL/EXTENSION	68"	48"	H	PM&R	GYMNASIUM			EXISTING ON 5TH FL	VV
51	not used									
52	PARALLEL BARS	15'-0"	27"	H	PM&R	GYMNASIUM			EXISTING ON 5TH FL	VV
53	CABLE CROSSOVER	32"	138"	H	PM&R	GYMNASIUM			EXISTING ON 5TH FL	VV
54	WORKER CEILING UNILIFT	26'-0"	12"	H	PM&R	GYMNASIUM	X		EXISTING ON 5TH FL	VC
55	PILATES REHAB - TRAPEZE	89"	36"	83"	PM&R	GYMNASIUM			EXISTING ON 5TH FL	VV
56	PILATES REHAB - REFORMER	97"	30"	H	PM&R	GYMNASIUM			EXISTING ON 5TH FL	VV
57	PILATES REHAB - CARRIAGE	38.5"	24"	22.5"	PM&R	GYMNASIUM			EXISTING ON 5TH FL	VV
58	PILATES REHAB - VERTICAL FRAME	22"	30.5"	77"	PM&R	GYMNASIUM			EXISTING ON 5TH FL	VV
59	STRETCH CAGE	56"	48"	87"	PM&R	GYMNASIUM			EXISTING ON 5TH FL	VV

Equipment Schedule (Continued)

ID	Equipment	Length	Width	Height	Department	Location	Power	Data	Notes	Furnish/Install
60	FREEDOM TRAINER ATLAS GYM	40"	60"	78"	PM&R	GYMNASIUM			EXISTING ON 5TH FL	VV
61	SIDE TABLE	24"	24"	H	COMMON	WAITING				VV
62	DESK CHAIR	L	W	H	VARIOUS	VARIOUS				VV
63	CLEANING WIPER DISPENSER	6"	6"	8"	PM&R	GYMNASIUM			EXISTING ON 5TH FL	VV
64	WIRE SHELVING	24"	24"	78"	PM&R	EQUIP. STOR.			EXISTING ON 5TH FL	VV
65	SUPPLY CART	30"	30"	72"	PM&R	EQUIP. STOR.			EXISTING ON 5TH FL	VV
66	ROLLING STOOL	L	W	H	PROS, CHIRO	EXAM, TREATMENT				VV
67	TOOL CART	18"	24"	30"	PM&R	EQUIP. STOR.			EXISTING ON 5TH FL	VV
68	MONITOR/KEYBOARD SWIVEL ARM	L	W	H	CHIROPRACTICS	TREATMENT			PER SPECS 12 35 70	CC
69	OXYGEN TANK CART (12)	22"	15"	36"	PROSTHETICS	RESP. STOR.			EXISTING ON 5TH FL	VV
70	METAL HANGER RACK	60"	W	H	PM&R	EQUIP. STOR.			EXISTING ON 5TH FL	VC
71	SELF CHECK-IN KIOSK	22"	18"	53"	COMMON	SHARED WAITING	X	X		VV
72	HYDROCOLLATOR	L	W	H	CHIROPRACTICS	TREATMENT	X			VV
73	SCALE	L	W	H	CHIROPRACTICS	TREATMENT				VV
74	HOT PACK MACHINE	L	W	H	CHIROPRACTICS	TREATMENT	X			VV
75	HAMPER, SINGLE	19"	19"	H	CHIROPRACTICS	TREATMENT				VV
76	SHARPS CONTAINER	6"	11"	9"	CHIROPRACTICS	TREATMENT				VC
77	WALL MOUNTED WORKSTATION BRACKET	L	W	H	CHIRO	TREATMENT			PER SPECS 12 35 70	CC
78	LINEN SUPPLY CART	48"	24"	H	COMMON	CLEAN SUPPLY				VV
79	BAR CODE PRINTER	L	W	H	PROSTHETICS	STORAGE	X			VV
80	BAR CODE SCANNER	L	W	H	PROSTHETICS	CLERKS	X	X		VV
81	TELEPHONE	L	W	H	VARIOUS	VARIOUS		X		VV
82	GLOVE BOX HOLDER	11"	5.5"	19"	VARIOUS	VARIOUS				VC
83	TABLE	36"	16"	30"	COMMON	NURSING ROOM			EXISTING ON 4TH FL	VV
84	STORAGE SHELF	18"	6"	36"	PM&R	GYMNASIUM			EXISTING ON 5TH FL	VC
85	BAYON RACK	36"	6"	36"	PM&R	GYMNASIUM			EXISTING ON 5TH FL	VC
86	VERTICAL REACH RIBBON RACK	6"	4"	48"	PM&R	GYMNASIUM			EXISTING ON 5TH FL	VC
87	VERTICAL REACH PEG BOARD	12"	16"	40"	PM&R	GYMNASIUM			EXISTING ON 5TH FL	VC
88	CEILING MOUNTED PULLEY BAR	24"	6"	8"	PM&R	GYMNASIUM			EXISTING ON 5TH FL	VC
89	RANGE HOOD		30"		PM&R	ADL TREATMENT ROOM	X		W/ FIRE SUPPRESSION PER SPECS 12 30 00	CC
90	DESK	60"	30"	30"	PROSTHETICS	EXAM/FITTING ROOM				VV
91	FLIPPER CABINET	42"	12"	12"	VARIOUS	VARIOUS			DOUBLE HIGH-MOUNT BOTT 56" A.F.F.	VC

Equipment Schedule Legend

1. V.V. - VA furnished, VA installed.
2. V.C. - VA furnished, contractor installed.
3. C.C. - Contractor furnished, contractor installed.

