

A

B

C

D

E

F

A

B

C

D

E

F

three inches = one foot

one and one half inches = one foot

one inch = one foot

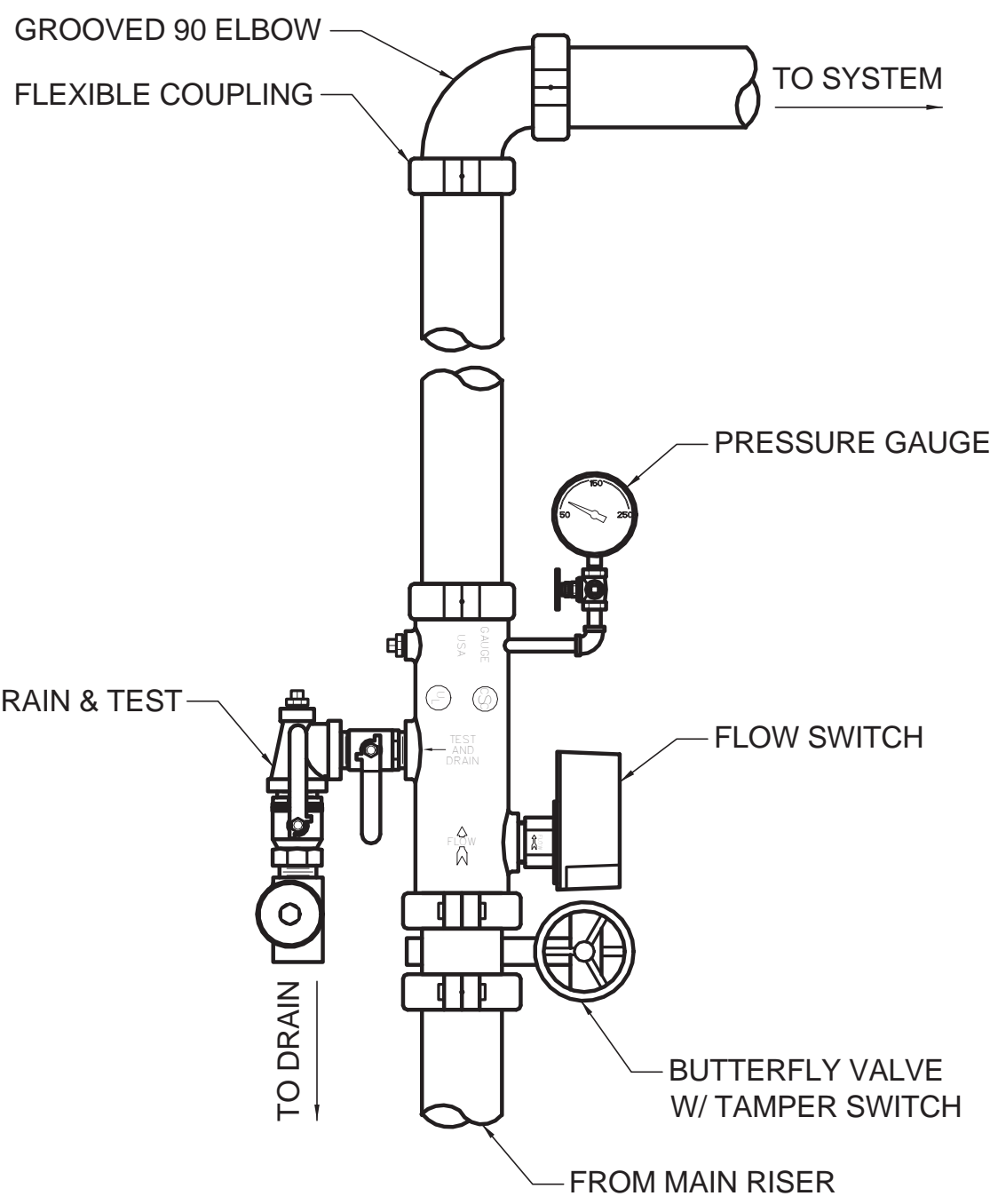
three quarters inch = one foot

one half inch = one foot

three eighths inch = one foot

one quarter inch = one foot

one eighth inch = one foot



1 FIRE PROTECTION RISER DETAIL
NOT TO SCALE

ABBREVIATIONS	
AG	ABOVE GRADE
ADD	ADDENDUM
ADDL	ADDITIONAL
ADJ	ADJUSTABLE
AFF	ABOVE FINISH FLOOR
AFG	ABOVE FINISH GRADE
ALT	ALTERNATE
BG	BELOW GRADE
CA	COMPRESSED AIR
CO	CLEANOUT
COL	COLUMN
CW	COLD WATER
DN	DOWN
EC	ELECTRICAL CONTRACTOR
EQ	EQUAL
FCO	FLOOR CLEANOUT
FD	FLOOR DRAIN
FLR	FLOOR
FOR	FUEL OIL RETURN
FOS	FUEL OIL SUPPLY
FOV	FUEL OIL VENT
FT	FOOT (FEET)
F	FURNACE
GAL	GALLON
GC	GENERAL CONTRACTOR
GPM	GALLONS PER MINUTE
HW	HOT WATER
MC	MECHANICAL CONTRACTOR
MECH	MECHANICAL
MIN	MINIMUM
NTS	NOT TO SCALE
NPCW	NON POTABLE COLD WATER
PC	PLUMBING CONTRACTOR
PLBG	PLUMBING
PRES	PRESSURE
QTY	QUANTITY
SAN	SANITARY
SCH	SCHEDULE
SPEC	SPECIFICATIONS
SS	STAINLESS STEEL
TEMP	TEMPERATURE
TYP	TYPICAL
VTR	VENT THRU ROOF
W/	WITH
WCO	WALL CLEANOUT
WC	WATER CLOSET

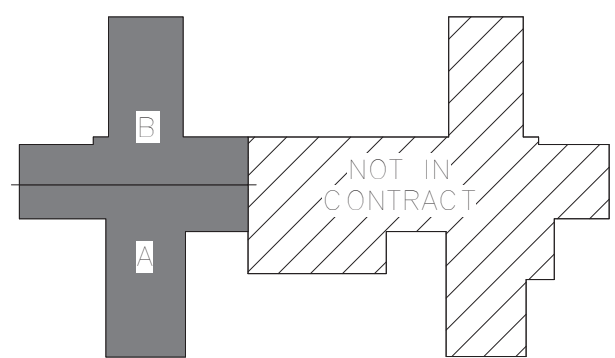
- FIRE PROTECTION RENOVATION NOTES**
- WHERE EXISTING SURFACES ARE DISRUPTED DUE TO THE REMOVAL OF EXISTING EQUIPMENT OR PIPING, THIS CONTRACTOR SHALL BE RESPONSIBLE FOR THE REPAIR OF DISRUPTED SURFACES TO MATCH EXISTING ADJACENT SURFACES.
 - EXISTING CONDITIONS AS SHOWN ON THE DRAWINGS ARE TAKEN FROM ORIGINAL AND AS-BUILT DRAWINGS OF THE BUILDING AND IN PART ARE UNVERIFIED. FIELD CONDITIONS SHALL GOVERN. ALL EXISTING CONDITIONS MUST BE VERIFIED PRIOR TO INITIATION OF WORK.
 - ALL EXISTING FIRE PROTECTION PIPING SHALL BE RELOCATED TO CREATE REQUIRED SPACE FOR INSTALLATION OF ALL NEW SERVICES FOR NEW CONSTRUCTION, INCLUDING BUT NOT LIMITED TO H.V.A.C., ELECTRICAL, AND PLUMBING TRADES. CONTRACTOR SHALL INCLUDE ALL NEW PIPING AND FITTINGS REQUIRED AND RELOCATE ANY AND ALL EXISTING SERVICES.
 - ALL EXISTING FIRE PROTECTION PIPING, NOT REMAINING IN SERVICE AFTER NEW CONSTRUCTION, SHALL BE REMOVED.
 - PIPING WHICH IS TO REMAIN IN SERVICE SHALL NOT BE DISTURBED. EXISTING PIPING DAMAGED DURING CONSTRUCTION SHALL BE REPLACED WITH NEW PIPING OF THE SAME SIZE AND MATERIAL.
 - COORDINATE WITH GENERAL CONTRACTOR TO PATCH ALL EXISTING WALLS, FLOORS, CEILINGS, ETC., AS REQUIRED BY NEW WORK.
 - CONTRACTOR SHALL NOTIFY THE COR TWO WEEKS IN ADVANCE OF ANY PROPOSED SHUTDOWN OF THE FP SYSTEM. ALL FP SHUTDOWNS WILL REQUIRE COR AUTHORIZATION. THE EXISTING FP SYSTEM SHALL REMAIN IN SERVICE AS LONG AS POSSIBLE THROUGH DEMOLITION AS DETERMINED BY OWNER.
 - ENSURE INTERIM LIFE SAFETY MEASURES ARE IN PLACE WHEN THE SPRINKLER SYSTEM IS TAKEN OUT OF SERVICE.

FIRE PROTECTION SYMBOL LEGEND	
	SHUTOFF VALVE
	END CAP
	FLOW SWITCH
	NEW TO EXISTING POINT OF CONNECTION SYMBOL
	CONCEALED SPRINKLER HEAD
	CONCEALED CLEAN ROOM SPRINKLER HEAD
	UPRIGHT SPRINKLER HEAD
	SIDEWALL SPRINKLER HEAD

FIRE PROTECTION PIPING LINETYPES	
LINETYPE	DESCRIPTION
-----	DEMOLITION
_____	NEW - ABOVE GRADE
=====	EXISTING - ABOVE GRADE

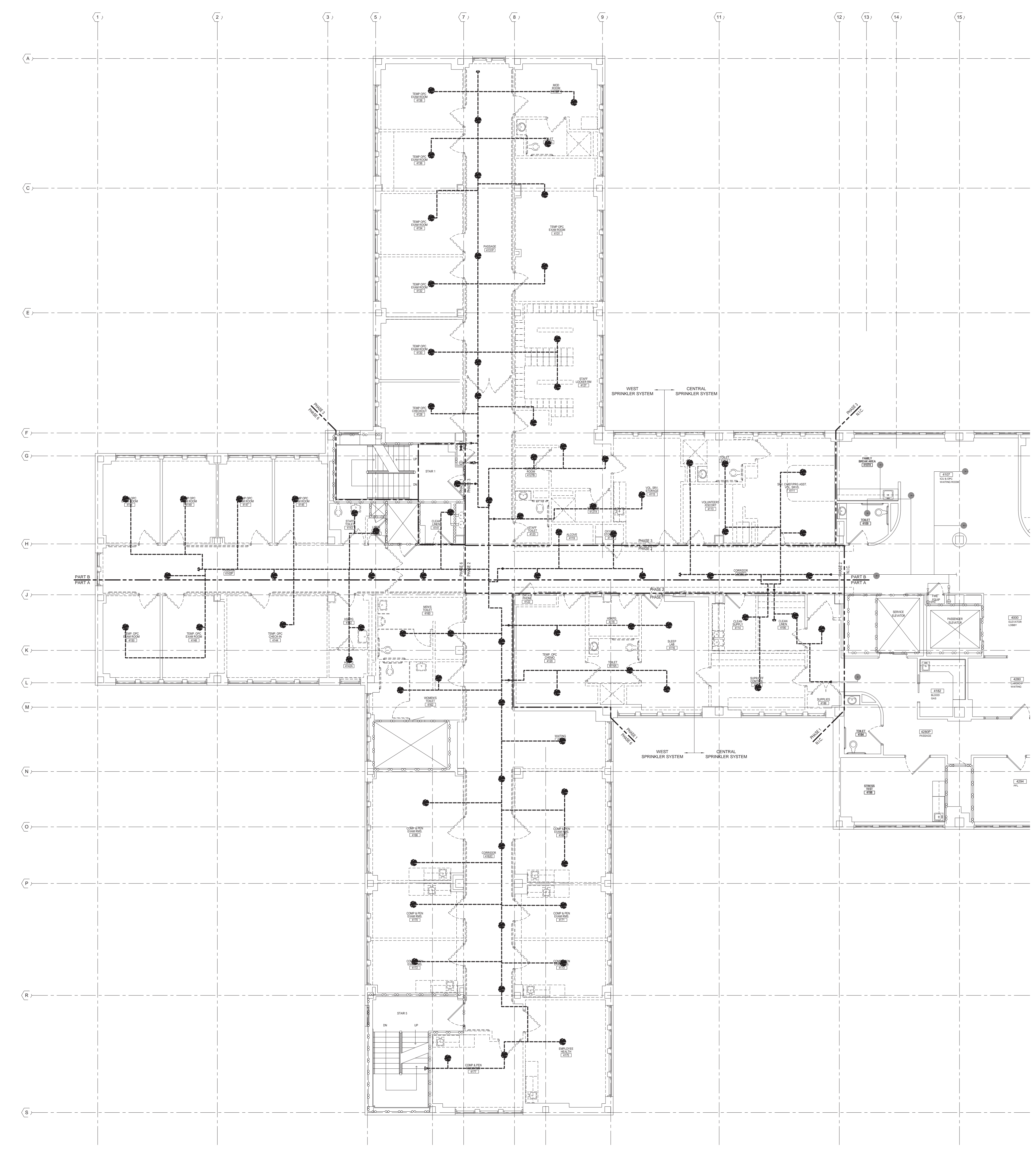
- FIRE PROTECTION GENERAL NOTES**
- COORDINATE INSTALLATION OF SPRINKLER PIPING AND ALL COMPONENTS WITH OTHER TRADES, OWNER, AND GENERAL CONTRACTOR.
 - CONTRACTOR IS RESPONSIBLE FOR REMOVING AND REINSTALLING ALL CEILING COMPONENTS AS REQUIRED TO INSTALL SPRINKLER PIPING AND HEADS IN.
 - FIRE PROTECTION SYSTEM TO COMPLY WITH NFPA #13, INSURANCE CARRIER AND ALL APPLICABLE STATE AND LOCAL CODES.
 - FIRE PROTECTION CONTRACTOR SHALL VISIT SITE PRIOR TO BID VERIFY ALL EXISTING CONDITIONS PRIOR TO BIDDING TO INSURE THE COORDINATION OF THE FIRE SERVICES WITH EXISTING CONDITIONS. WORK INDICATED ON THE DRAWINGS IS BASED ON THE BEST AVAILABLE INFORMATION CONCERNING LOCATIONS AND SIZES OF SPRINKLER PIPING.
 - CUTTING OF STRUCTURAL AND/OR ARCHITECTURAL MEMBERS TO BE DONE ONLY WITH THE WRITTEN APPROVAL OF THE ARCHITECT AND STRUCTURAL ENGINEER.
 - SPRINKLER HEAD LOCATIONS ARE FOR SCHEMATIC USE AND ANY ADDITIONAL HEADS REQUIRED PER CODE SHALL BE INSTALLED. VERIFY STRUCTURAL, MECHANICAL, ELECTRICAL INSTALLATIONS AND AVOID OBSTRUCTIONS OR INTERFERENCES.
 - PROVIDE MINIMUM 5 PSI SAFETY FACTOR.
 - WORKING DRAWINGS INDICATING SPRINKLER HEAD LOCATIONS AND EXPOSED AND CONCEALED PIPING ROUTING SHALL BE PROVIDED TO THE ARCHITECT/ENGINEER PRIOR TO INSTALLATION FOR APPROVAL.
 - FIRE PROTECTION CONTRACTOR SHALL BE REQUIRED TO PARTICIPATE IN THE COORDINATION MEETINGS AND COORDINATION PLAN DEVELOPMENT WITH OTHER TRADES AND THE GC PRIOR TO INSTALLATION IN ORDER TO INSTALL FP PIPING AND OTHER FP COMPONENTS IN OPTIMUM LOCATION FOR DRAINING THE FP SYSTEM AND MAINTAINING ACCESSIBILITY ABOVE THE CEILING.
 - ALL SPRINKLER HEADS SHALL BE INSTALLED CENTER OF TILE.
 - THE USE OF U-BOLT MECHANICAL TEES ALSO KNOW AS "JACK TEES" IS PROHIBITED.
 - SPRINKLER HEADS ARE TO BE COORDINATED WITH ALL DIFFUSERS, SPEAKERS, LIGHTING FIXTURES, CEILING SYSTEMS AND STRUCTURAL SYSTEM.
 - FIRE STOP ALL PENETRATIONS OF SMOKE/FIRE WALLS, CEILINGS, AND FLOORS.
 - CONTRACTOR SHALL REMOVE AND REINSTALL EXISTING ATC CEILING AS REQUIRED FOR DEMOLITION AND NEW WORK. CONTRACTOR TO REPLACE ANY DAMAGED CEILING TILES TO MATCH EXISTING.
 - WORK IN CORRIDORS SHALL BE PERFORMED AFTER NORMAL BUSINESS HOURS.
 - ALL SPRINKLER PIPING SHALL BE SCHEDULE 40.
 - COORDINATE SHUTDOWN AND INTERRUPTIONS WITH OWNER A MINIMUM OF 10 DAYS IN ADVANCE.
 - AUXILIARY DRAINS IN CEILING SPACE SHALL BE PROVIDED WITH CAPPED HOSE CONNECTIONS.
 - REFER TO ARCHITECTURAL PHASING PLAN FOR PROJECT PHASING. COORDINATE REQUIRED WORK WITH ALL OTHER TRADES FOR EACH PHASE. CONTRACTOR SHALL MAINTAIN PROJECT DEADLINES FOR EACH PHASE AND COORDINATE AREA OF WORK AND SHUTDOWNS WITH OWNER AND ARCHITECT.

FIRE PROTECTION SHEET INDEX	
FP001	FIRE PROTECTION LEAD SHEET
FPD100	4TH FLOOR FIRE PROTECTION DEMOLITION PLAN - OVERALL FOR REFERENCE ONLY
FPD101	4TH FLOOR FIRE PROTECTION DEMOLITION PLAN - PART A
FPD102	4TH FLOOR FIRE PROTECTION DEMOLITION PLAN - PART B
FP100	4TH FLOOR FIRE PROTECTION PLAN - OVERALL FOR REFERENCE ONLY
FP101	4TH FLOOR FIRE PROTECTION PLAN - PART A
FP102	4TH FLOOR FIRE PROTECTION PLAN - PART B



KEY PLAN
NOT TO SCALE

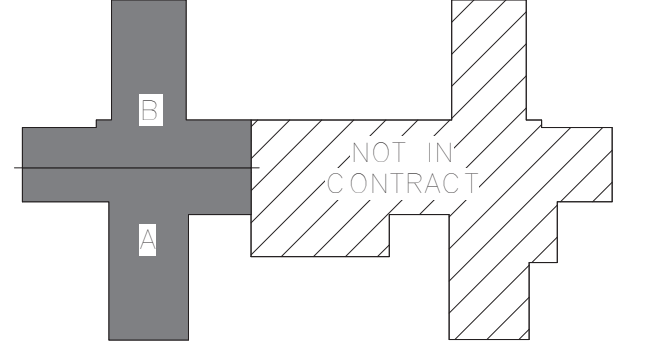
<div>100% CONSTRUCTION DOCUMENTS</div> <div>Revisions:</div>		<div>CONSULTANTS:</div> <div></div> <div>engineers consultants commissioning</div> <div>MEP Associates, LLC 2750 Arbor Court Eau Claire, WI 54601 Phone: 715.832.5580 Fax: 715.832.5568 www.mepassociates.com MEP PROJECT NO.: N06.13.01</div>		<div>ARCHITECT/ENGINEERS:</div> <div></div> <div>420 RAIL STREET NEGAUNEE, MI 49866 PHONE: 906-475-6616 FAX: 906-475-6954 NDW PROJECT NUMBER: 1214</div>		<div>Drawing Title</div> <div>FIRE PROTECTION LEAD SHEET</div>		<div>Project Title</div> <div>Renovate Four West</div>		<div>Project Number</div> <div>585-12-132</div>		<div>Office of Construction and Facilities Management</div> <div></div> Department of Veterans Affairs
								<div>Building Number</div> <div>1</div>				
						<div>Location</div> <div>IRON MOUNTAIN, MICHIGAN</div>		<div>Drawing Number</div> <div>FP001</div>				
						<div>Date</div> <div>11/04/2013</div>		<div>Checked</div> <div>TCC</div>				
								<div>Drawn</div> <div>NCF</div>				
								<div>Dwg. 26 of 100</div>				



- GENERAL NOTES**
1. FIRE PROTECTION SERVING ROOMS TO REMAIN IN SERVICE SHALL BE COMPLETED WITH MAXIMUM DOWN TIME OF 4 DAYS. DEMO AND NEW WORK SHALL BE DONE FROM SATURDAY THRU TUESDAY. ROUTE NEW PIPING TO NOT INTERFERE WITH NEW CONSTRUCTION. COORDINATE WITH ALL OTHER TRADES.
 2. CONTRACTOR SHALL BE RESPONSIBLE FOR REMOVAL OF EXISTING CEILING AS REQUIRED TO INSTALL FIRE PROTECTION PIPING.
 3. COORDINATE WITH ARCHITECTURAL PHASING PLAN.

1 4TH FLOOR FIRE PROTECTION DEMOLITION PLAN - OVERALL

1/8" = 1'-0"



KEY PLAN

NOT TO SCALE



ARCHITECT/ENGINEERS:



420 RAIL STREET
NEGAUNEE, MI 49866
PHONE: 906-475-6616
FAX: 906-475-6954
NDW PROJECT NUMBER: 1214

Drawing Title
4TH FLOOR FIRE PROTECTION
DEMOLITION PLAN - OVERALL FOR
REFERENCE ONLY

Approved: Project Director

Project Title
Renovate Four West

Location
IRON MOUNTAIN, MICHIGAN

Date
11/04/2013

Checked
TCC

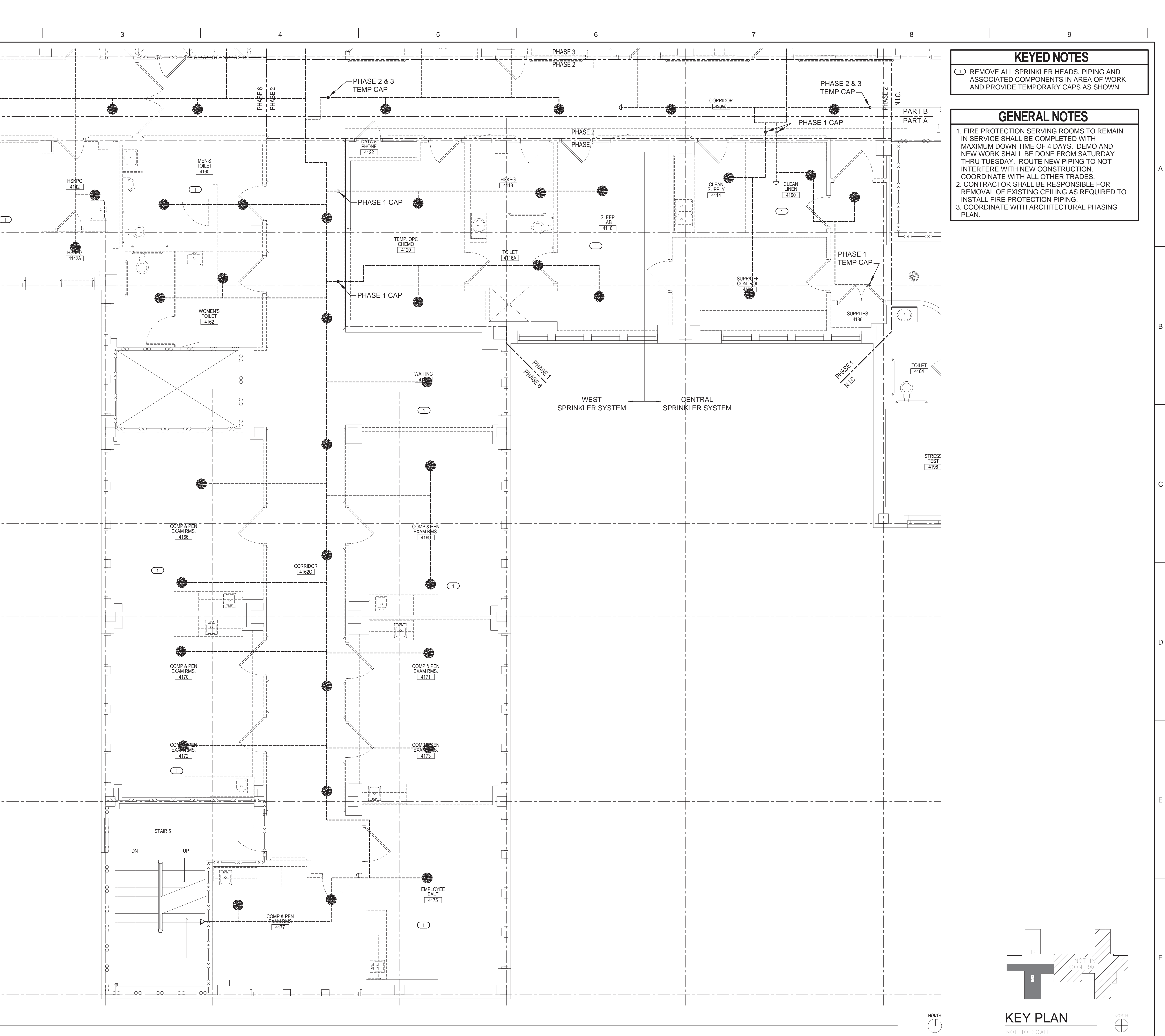
Drawn
NCF

Project Number
585-12-132
Building Number
1

Drawing Number
FPD100
Dwg. 27 of 100

Office of
Construction
and Facilities
Management





ARCHITECT/ENGINEERS:

**NORTHERN
DESIGN
WORKS**

420 RAIL STREET
NEGAUNEE, MI 49866
PHONE: 906-475-6616
FAX: 906-475-6954
NDW PROJECT NUMBER: 1214

Drawing Title
**4TH FLOOR FIRE PROTECTION
DEMOLITION PLAN - PART A**

Approved: Project Director

Project Title
Renovate Four West

Location
IRON MOUNTAIN, MICHIGAN

Date
11/04/2013

Checked
TCC

Drawn
NCF

Project Number
585-12-132

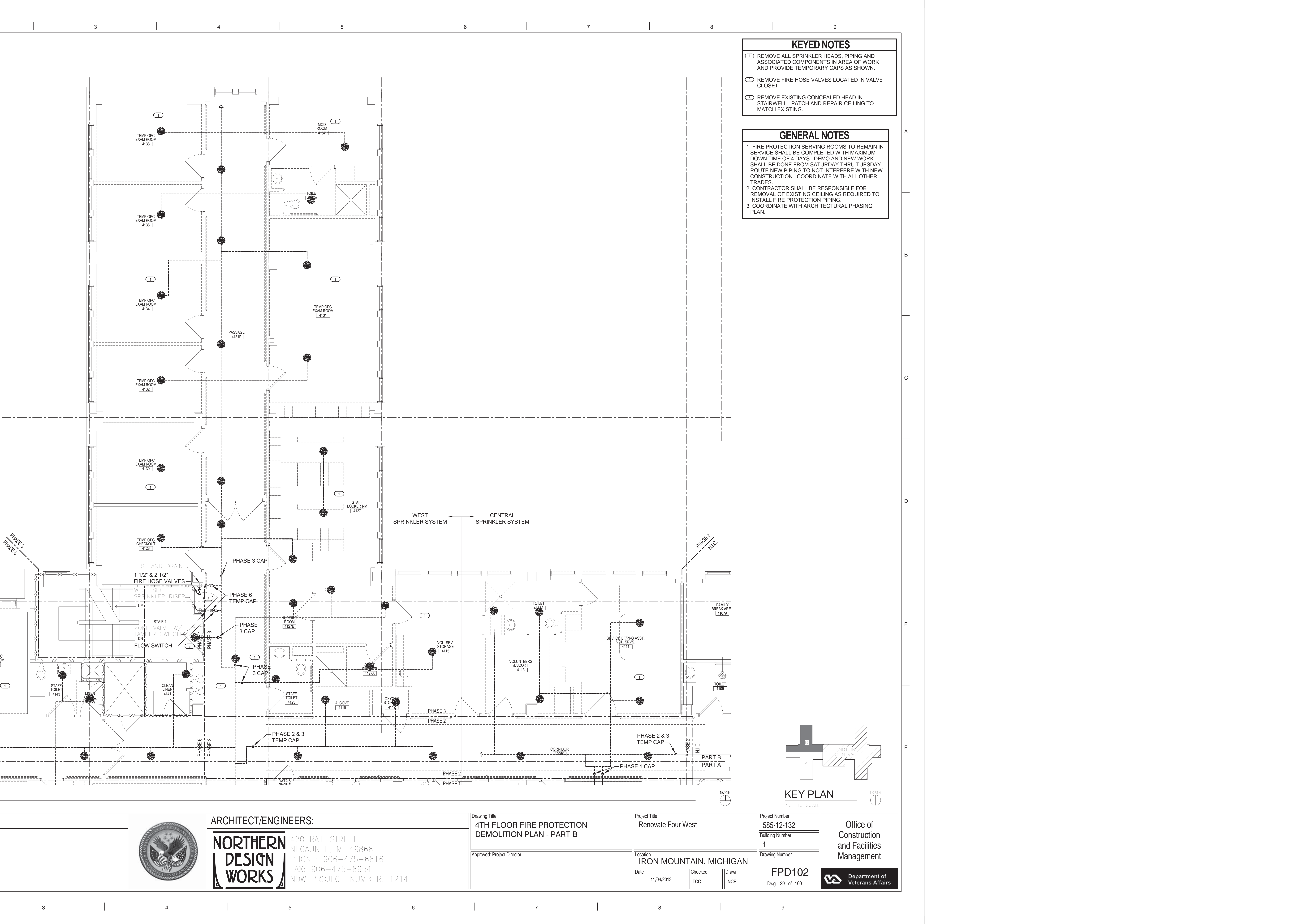
Building Number
1

Drawing Number
FPD101

Dwg. 28 of 100

Office of
Construction
and Facilities
Management

Department of
Veterans Affairs

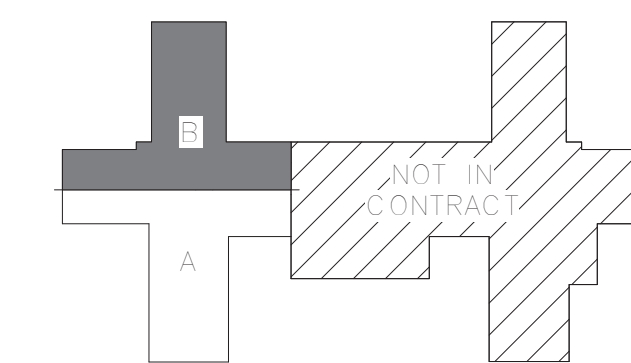


KEYED NOTES

- 1 REMOVE ALL SPRINKLER HEADS, PIPING AND ASSOCIATED COMPONENTS IN AREA OF WORK AND PROVIDE TEMPORARY CAPS AS SHOWN.
- 2 REMOVE FIRE HOSE VALVES LOCATED IN VALVE CLOSET.
- 3 REMOVE EXISTING CONCEALED HEAD IN STAIRWELL. PATCH AND REPAIR CEILING TO MATCH EXISTING.

GENERAL NOTES

1. FIRE PROTECTION SERVING ROOMS TO REMAIN IN SERVICE SHALL BE COMPLETED WITH MAXIMUM DOWN TIME OF 4 DAYS. DEMO AND NEW WORK SHALL BE DONE FROM SATURDAY THRU TUESDAY. ROUTE NEW PIPING TO NOT INTERFERE WITH NEW CONSTRUCTION. COORDINATE WITH ALL OTHER TRADES.
2. CONTRACTOR SHALL BE RESPONSIBLE FOR REMOVAL OF EXISTING CEILING AS REQUIRED TO INSTALL FIRE PROTECTION PIPING.
3. COORDINATE WITH ARCHITECTURAL PHASING PLAN.



KEY PLAN

NOT TO SCALE



ARCHITECT/ENGINEERS:

**NORTHERN
DESIGN
WORKS**

420 RAIL STREET
NEGAUNEE, MI 49866
PHONE: 906-475-6616
FAX: 906-475-6954
NDW PROJECT NUMBER: 1214

Drawing Title
**4TH FLOOR FIRE PROTECTION
DEMOLITION PLAN - PART B**

Approved: Project Director

Project Title
Renovate Four West

Location
IRON MOUNTAIN, MICHIGAN

Date
11/04/2013

Checked
TCC

Drawn
NCF

Project Number
585-12-132

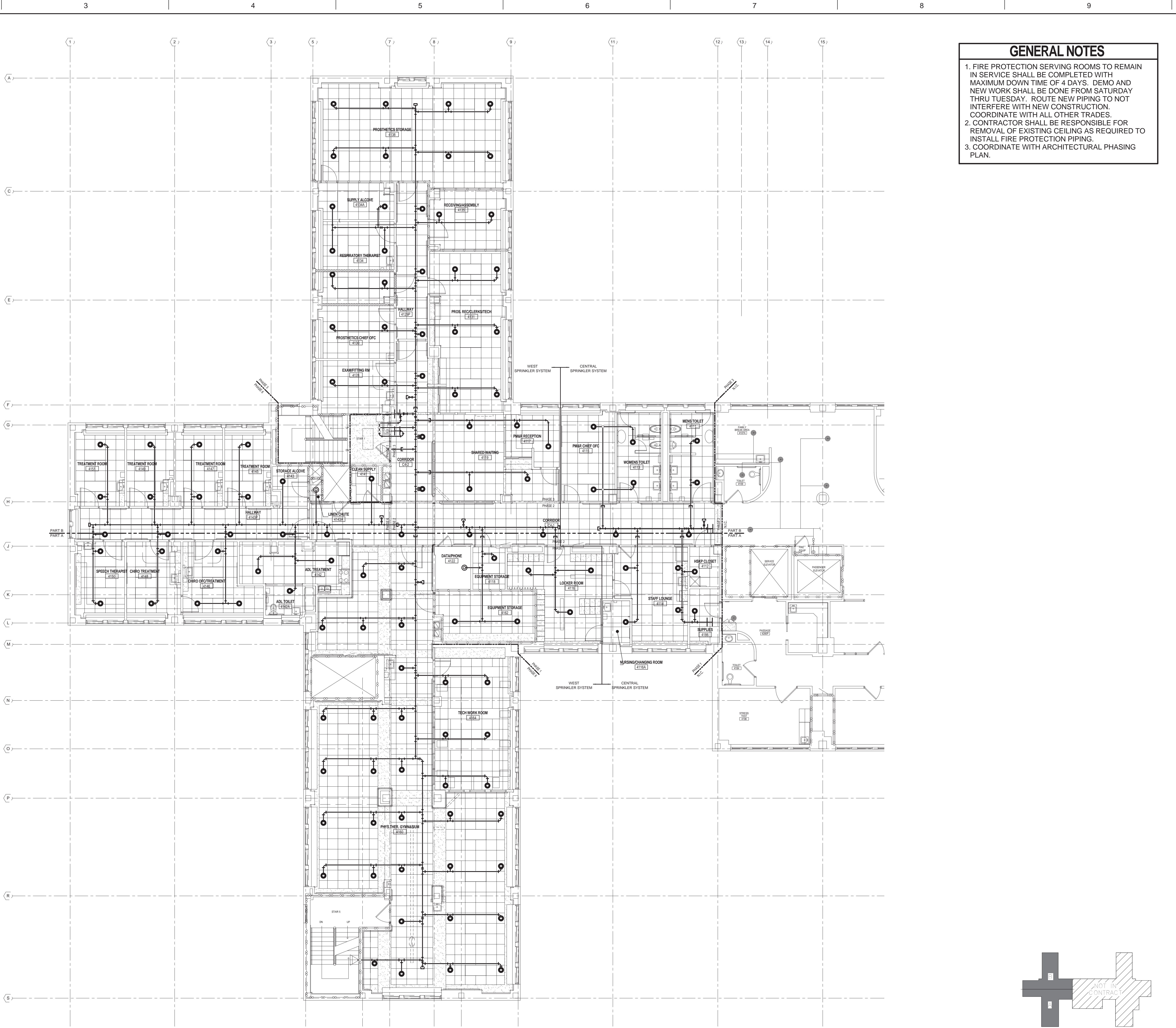
Building Number
1

Drawing Number
FPD102

Dwg. 29 of 100

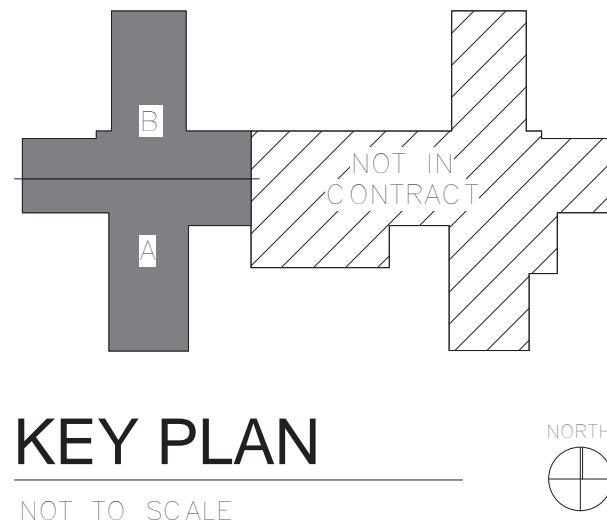
Office of
Construction
and Facilities
Management





- GENERAL NOTES**
1. FIRE PROTECTION SERVING ROOMS TO REMAIN IN SERVICE SHALL BE COMPLETED WITH MAXIMUM DOWNTIME OF 4 DAYS. DEMO AND NEW WORK SHALL BE DONE FROM SATURDAY THRU TUESDAY. ROUTE NEW PIPING TO NOT INTERFERE WITH NEW CONSTRUCTION. COORDINATE WITH ALL OTHER TRADES.
 2. CONTRACTOR SHALL BE RESPONSIBLE FOR REMOVAL OF EXISTING CEILING AS REQUIRED TO INSTALL FIRE PROTECTION PIPING.
 3. COORDINATE WITH ARCHITECTURAL PHASING PLAN.

1 4TH FLOOR FIRE PROTECTION PLAN - OVERALL
1/8" = 1'-0"



ARCHITECT/ENGINEERS:



420 RAIL STREET
NEGAUNEE, MI 49866
PHONE: 906-475-6616
FAX: 906-475-6954
NDW PROJECT NUMBER: 1214

Drawing Title
**4TH FLOOR FIRE PROTECTION PLAN
- OVERALL FOR REFERENCE ONLY**

Approved: Project Director

Project Title
Renovate Four West

Location
IRON MOUNTAIN, MICHIGAN

Date
11/04/2013

Checked
TCC

Drawn
NCF

Project Number
585-12-132

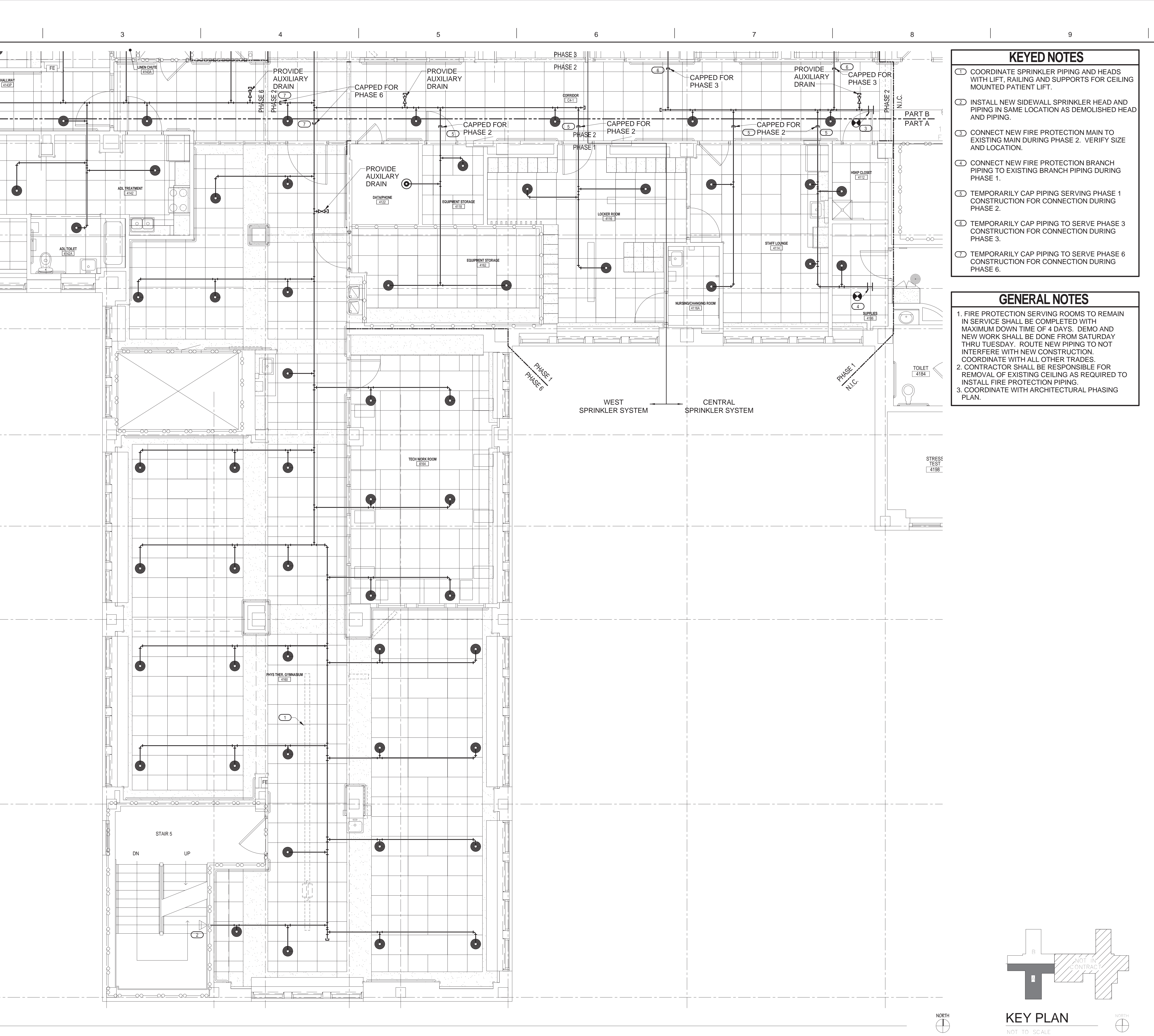
Building Number
1

Drawing Number
FP100

Dwg. 30 of 100

Office of
Construction
and Facilities
Management



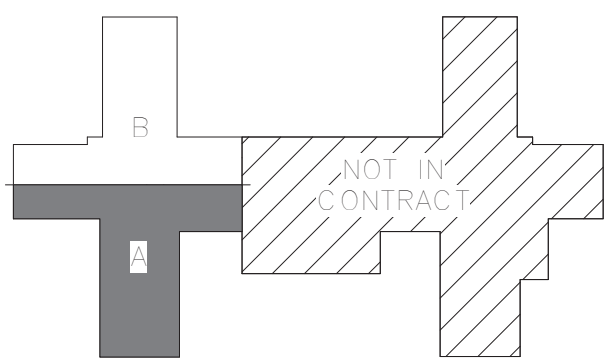


KEYED NOTES

- 1. COORDINATE SPRINKLER PIPING AND HEADS WITH LIFT, RAILING AND SUPPORTS FOR CEILING MOUNTED PATIENT LIFT.
- 2. INSTALL NEW SIDEWALL SPRINKLER HEAD AND PIPING IN SAME LOCATION AS DEMOLISHED HEAD AND PIPING.
- 3. CONNECT NEW FIRE PROTECTION MAIN TO EXISTING MAIN DURING PHASE 2. VERIFY SIZE AND LOCATION.
- 4. CONNECT NEW FIRE PROTECTION BRANCH PIPING TO EXISTING BRANCH PIPING DURING PHASE 1.
- 5. TEMPORARILY CAP PIPING SERVING PHASE 1 CONSTRUCTION FOR CONNECTION DURING PHASE 2.
- 6. TEMPORARILY CAP PIPING TO SERVE PHASE 3 CONSTRUCTION FOR CONNECTION DURING PHASE 3.
- 7. TEMPORARILY CAP PIPING TO SERVE PHASE 6 CONSTRUCTION FOR CONNECTION DURING PHASE 6.

GENERAL NOTES

- 1. FIRE PROTECTION SERVING ROOMS TO REMAIN IN SERVICE SHALL BE COMPLETED WITH MAXIMUM DOWN TIME OF 4 DAYS. DEMO AND NEW WORK SHALL BE DONE FROM SATURDAY THRU TUESDAY. ROUTE NEW PIPING TO NOT INTERFERE WITH NEW CONSTRUCTION. COORDINATE WITH ALL OTHER TRADES.
- 2. CONTRACTOR SHALL BE RESPONSIBLE FOR REMOVAL OF EXISTING CEILING AS REQUIRED TO INSTALL FIRE PROTECTION PIPING.
- 3. COORDINATE WITH ARCHITECTURAL PHASING PLAN.



KEY PLAN

NOT TO SCALE



ARCHITECT/ENGINEERS:



420 RAIL STREET
NEGAUNEE, MI 49866
PHONE: 906-475-6616
FAX: 906-475-6954
NDW PROJECT NUMBER: 1214

Drawing Title
4TH FLOOR FIRE PROTECTION PLAN
- PART A

Approved: Project Director

Project Title
Renovate Four West

Location
IRON MOUNTAIN, MICHIGAN

Date
11/04/2013

Checked
TCC

Drawn
NCF

Project Number
585-12-132

Building Number
1

Drawing Number
FP101

Dwg. 31 of 100

Office of
Construction
and Facilities
Management



