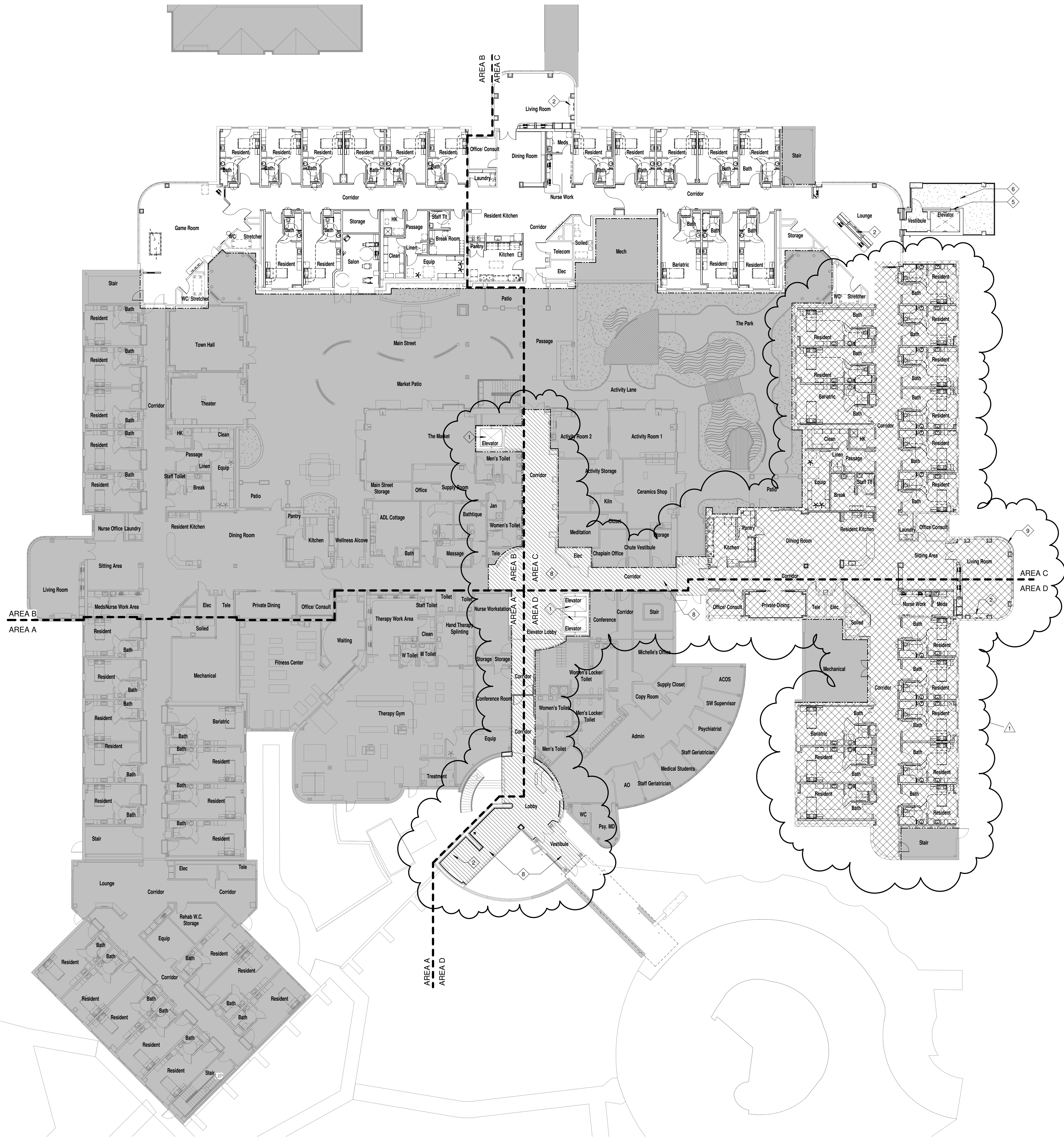


C:\Users\kennel\Documents\08-0006-03_VAMC Salisbury Phase III_Arch_C-14_Finish Interior.dwg 1/10/2014 12:46:11 PM



DRAWING NOTES

1. SEE A321 FOR ELEVATOR FINISHES. ALT. SEE SPECIFICATION SECTION 01 00 00.
2. FIREPLACE. ALTERNATE. SEE SPECIFICATION SECTION 01 00 00.
3. FORMAL DINING ROOM. ALT. SEE SPECIFICATION SECTION 01 00 00.
4. ELEVATOR VESTIBULE CEILING AND ROOF DESIGN. ALT. SEE SPECIFICATION SECTION 01 00 00.
5. GLASS AT ELEVATOR TOWER AND IN ELEVATOR CAB. ALT. SEE SPECIFICATION SECTION 01 00 00.
6. PORCH AT ELEVATOR TOWER. ALT. SEE SPECIFICATION SECTION 01 00 00.
7. NEW PORCH ALT. INSTALLED ON CONCRETE FOOTING WITH ELEVATED PAVER SYSTEM. SEE SPEC 01 00 00.
8. A WING ALT. (DIAGONAL HATCHED AREA). SEE SPEC 01 00 00.
9. D WING ALT. (CROSSHATCHED AREA). SEE SPEC 01 00 00.

GENERAL NOTES

1. AREAS IN GRAY ARE NOT IN CONTRACT.

Architect of Record



5960 Fairview Road
Suite 500
Charlotte, NC 28210

704
887.3500
887.3507 fax

Consultants

MECHANICAL/ELECTRICAL/PLUMBING/FIRE PROTECTION:

AME Consulting Engineers, PC
421 Penman Street, Suite 200
Charlotte, NC 28203
704.295.4263 PHONE
704.295.7543 FAX

STRUCTURAL:

ZAPATA, Inc.
6302 Fairview Rd., Ste. 600
Charlotte, NC 28210
704.378.4923 PHONE
704.358.8342 FAX

CIVIL:

COLEJENEST & STONE, P.A.
200 South Tryon Street, Suite 1400
Charlotte, North Carolina 28202
704.376.1555 PHONE
704.376.7851 FAX

Project

VAMC Salisbury Building 42 Additions & Renovation - Phase III

City, State
Salisbury, NC

VA Project Number
659-335

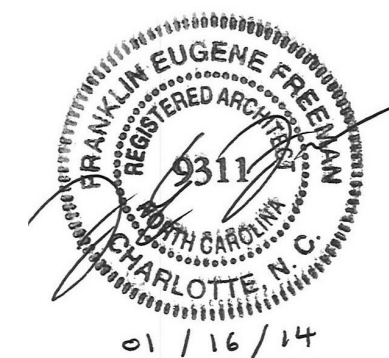
Issued For

Construction

Item	Date	Description
1	01/14/14	Amendment 1 - Project Alternates

Drawn By SLS/SP/BR/FF/ES/AB
Checked By FF

Seal / Signature



Sheet Title

Overall Floor Plan - First Floor

Date

December 21, 2012

Sheet Number

A101