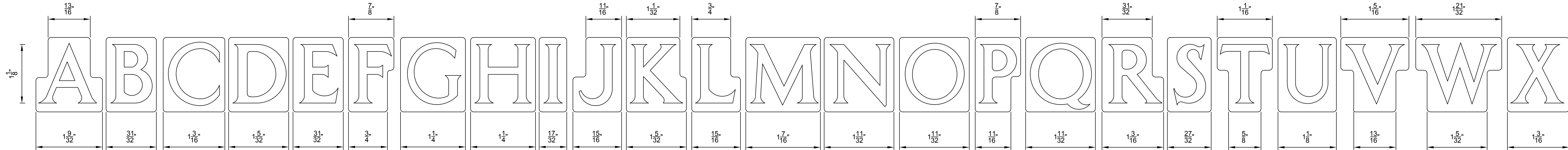
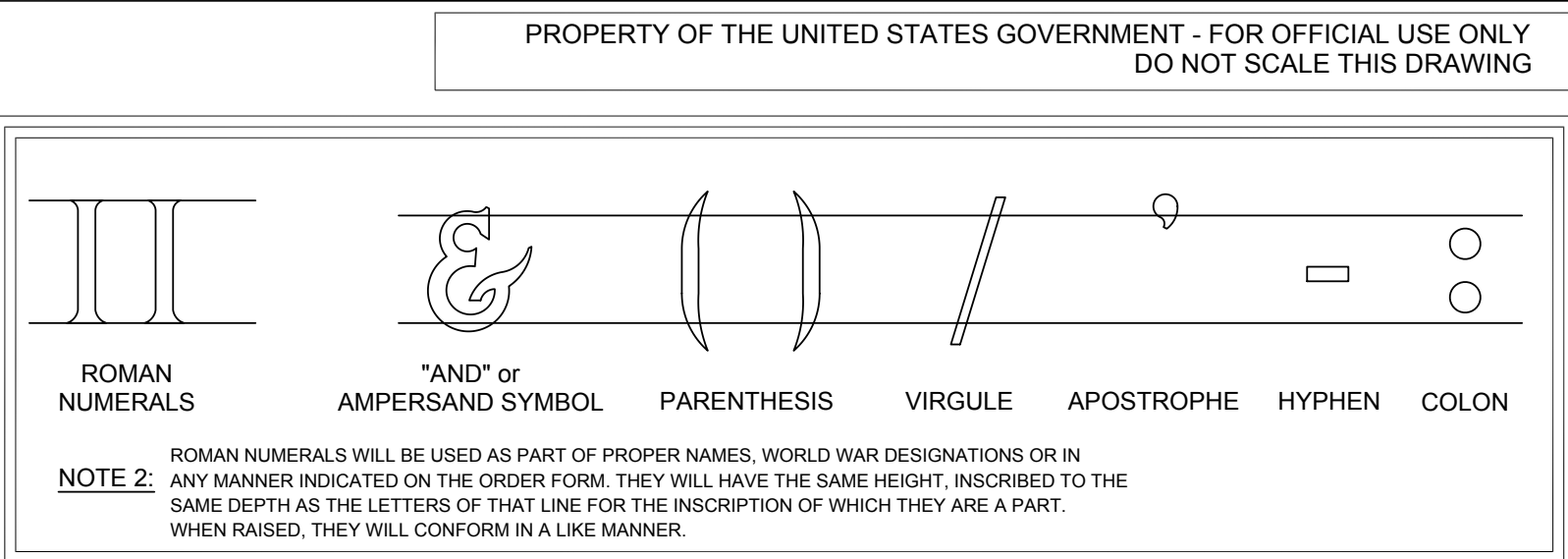
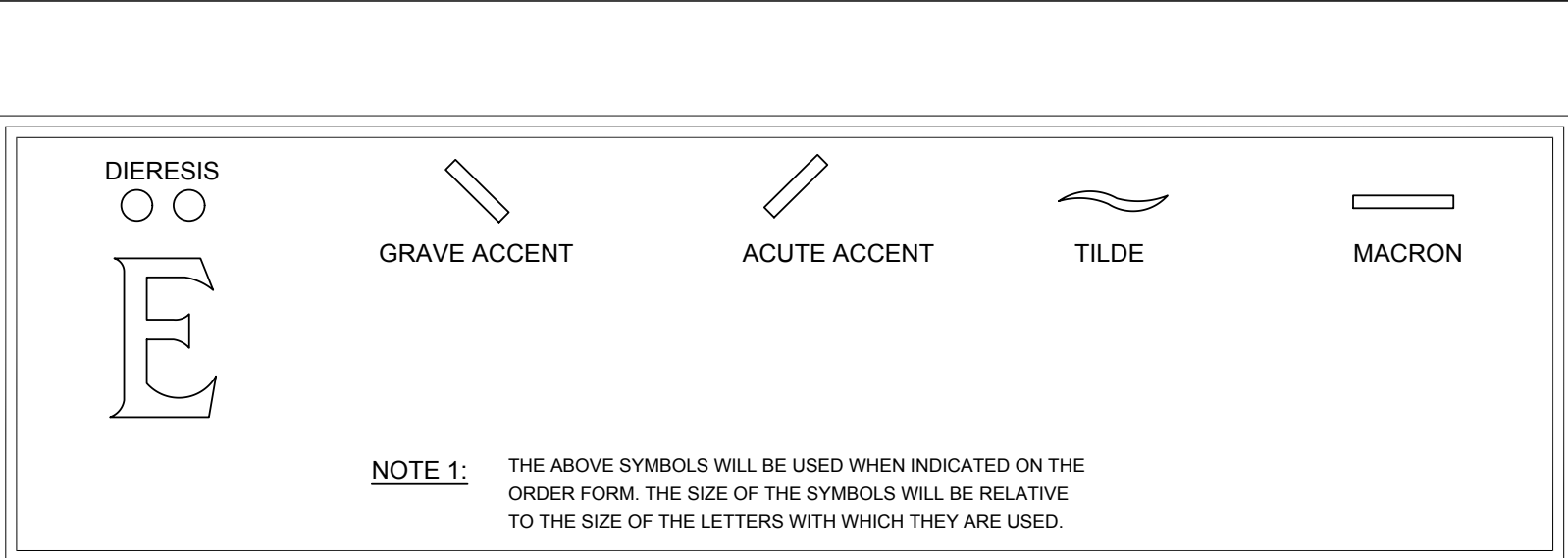
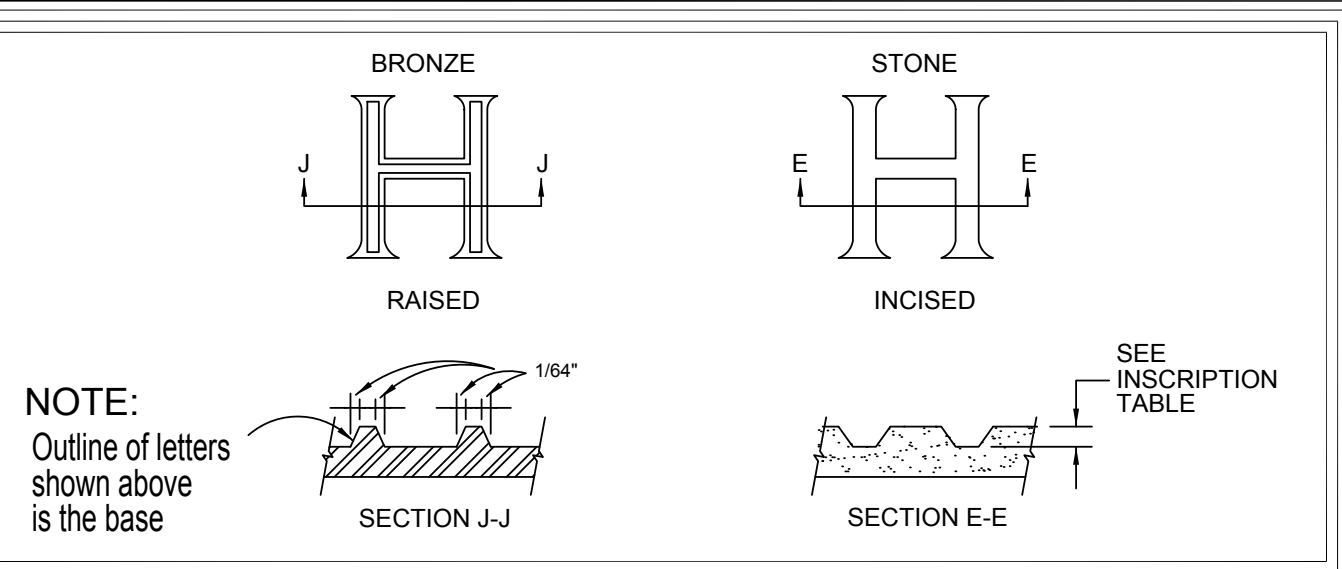
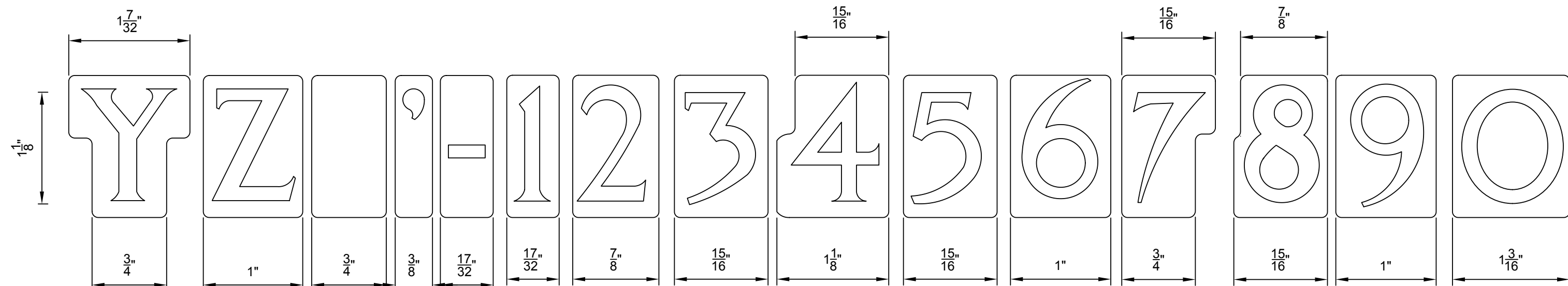


DRAWING LOCATION	MARKER TYPE	ITEM NAME AND LETTER HEIGHT								
		L1	L2	L3	L4	L5	L6	L7	EMBLEM	
		1 1/8"	1"	7/8"	3/4"	7/16"	3/8"	5/8"	2" OR 3"	
		DEPTH BY MARKER TYPE								
A-B1	B1	N/A	3/32"	N/A	3/32"	N/A	N/A	N/A	3/32"	
A-F-1	F1	7/32" - 9/32"	N/A	6/32" - 7/32"	6/32" - 7/32"	N/A	N/A	N/A	7/32" - 9/32"	
A-G1/J1/L1	G1/J1/L1	7/32" - 9/32"	N/A	6/32" - 7/32"	6/32" - 7/32"	N/A	N/A	N/A	7/32" - 9/32"	
A-MW-1/2	A1/C1	N/A	N/A	N/A	N/A	4/32" - 5/32"	N/A	4/32" - 5/32"	5/32" - 7/32"	
A-NOIS-1/2	E1/H1/I1	5/32" - 7/32"	4/32" - 5/32"	4/32" - 6/32"	4/32" - 6/32"	N/A	N/A	N/A	5/32" - 7/32"	
A-U1-1/2	U1	7/32" - 9/32"	N/A	6/32" - 7/32"	6/32" - 7/32"	N/A	N/A	N/A	7/32" - 9/32"	
A-V1/W1	V1/W1	7/32" - 9/32"	N/A	6/32" - 7/32"	6/32" - 7/32"	N/A	N/A	N/A	7/32" - 9/32"	
A-XA/XB/XC	XA/XB/XC	N/A	3/16" RAISED AND INSCRIBED	N/A	N/A	N/A	N/A	N/A	N/A	
A-YA	YA	N/A	3/16" RAISED AND INSCRIBED	N/A	N/A	N/A	N/A	N/A	N/A	
A-Z1	Z1	N/A	N/A	N/A	N/A	3/32"	3/32"	N/A	3/32"	

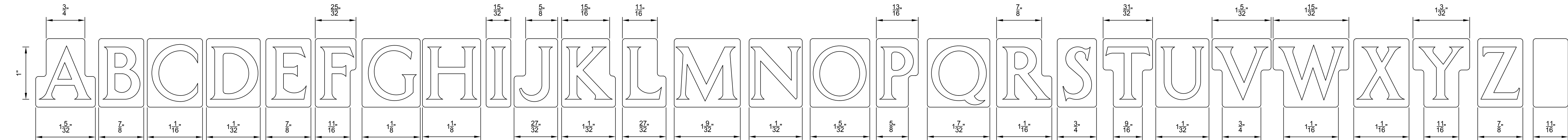
DEPTH BY TYPE NOTE: AS OF JULY 1, 2013 THESE DEPTHS SUPERCEDE PREVIOUSLY SPECIFIED DEPTHS AND MUST BE FOLLOWED IN LIEU OF DEPTHS SHOWN IN DRAWINGS RELATED TO SPECIFIC MONUMENT TYPES.



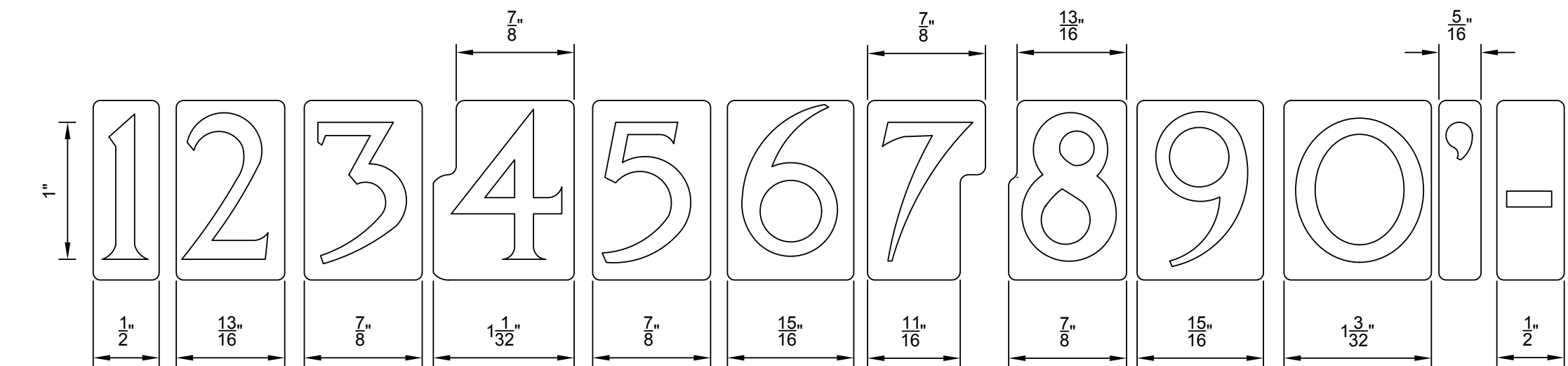
## ITEM L-1



## ITEM L-1 CONTINUED



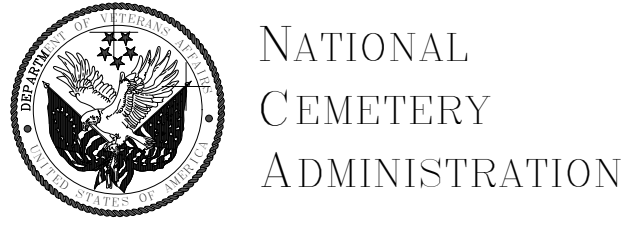
## ITEM L-2



## ITEM L-2 CONTINUED

B	ADDED L5 & L6 & L7 FONTS, UPDATED INSCRIPTION TABLE, ADD SHT 2 & 3	07/01/13
A	MOVED INCISED DETAILS TO SHT 2, DELETED EMBLEM 50, ADDED ACCENT MARKS & CHARACTERS	03-01-07
--	SUPERSEDES DRAWING ID-4 DATED 12-2-99	06/05/03
Revisions		Date

- GENERAL NOTES
- FOR MARBLE AND GRANITE NICHE COVERS: SMALL CAPITAL LETTERS WILL BE USED IN THE FOLLOWING MANNER: FOR "C" IN MC DONALD, "AC" IN MAC DONALD, "2" IN US, "2" IN 2D, "LIEUTENANT", "32" IN 1ST, "LIEUTENANT", ETC. THEY WILL HAVE THE SAME DEPTH OR RISE AS THE LARGE LETTERS. THE SIZE OF THE LETTERING WILL BE ITEM L-3 WHEN USED WITH ITEM L-1 AND ITEM L-4 WHEN USED WITH ITEM L-3.
  - THE COTR MAY PROVIDE WRITTEN APPROVAL TO SLIGHTLY REVISE THE CENTER AREA OF LETTERS, NUMBERS, AND OTHER CHARACTERS TO PREVENT BLOWOUT.



Drawing Title LETTERS, FONTS, NUMBERS & OTHER CHARACTERS	Project Title GOVERNMENT HEADSTONES, MARKERS, AND NICHE COVERS	Date JULY 1, 2013
Approved: Director, Memorial Programs Service Signed	Marker Type REFER TO DEPTH CHART Checked KEE/KS Drawn MLT SYSTEMS	Project No.
Approved: Chief of Operations, Memorial Programs Service Signed	Location Digital File A-LFN&OC-1.DWG 24" x 36" SHEET	DRAWING NO. A-LFN&OC-1 Sheet 1 of 3