

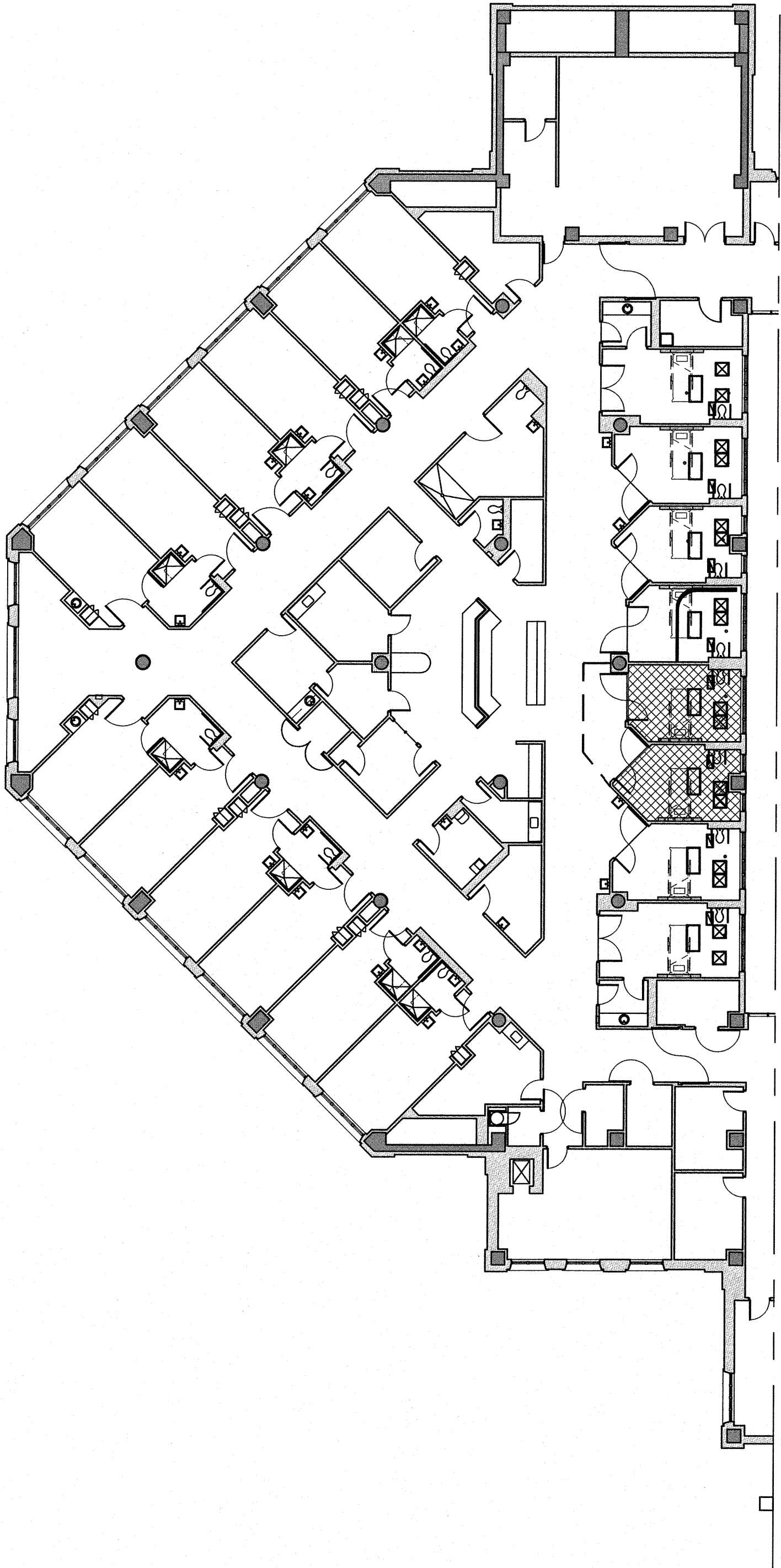


PHASING NOTES

1. PHASE I TO INCLUDE THE INSTALLATION OF INTERSTITIAL LOCATED MEDICAL GAS ISOLATION VALVES. REFER TO MECHANICAL FOR LOCATIONS.
2. CONTRACTOR TO ASSUME FOUR (4) PHASES. FINAL PHASING PLAN TO BE SUBMITTED BY CONTRACTOR.
3. CONTRACTOR TO COORDINATE PHASES OF WORK WITH C.O.R. AND ACCOMMODATE VA MEDICAL STAFF.
4. CONTRACTOR TO MAINTAIN A CONTINUOUS 5'-0" CLEAR WIDTH IN CORRIDORS AT ALL TIMES.
5. INSTALLATION OF ISOLATION VALVES TO OCCUR PRIOR TO ALL OTHER WORK. CONTRACTOR TO INSTALL VALVES FOR EACH ZONE SEPARATELY (4 ZONES). ZONES TO BE RE-CERTIFIED AFTER INSTALLATION OF VALVES.
6. RE-CERTIFICATION OF GASSES MUST OCCUR AFTER EACH PHASE.

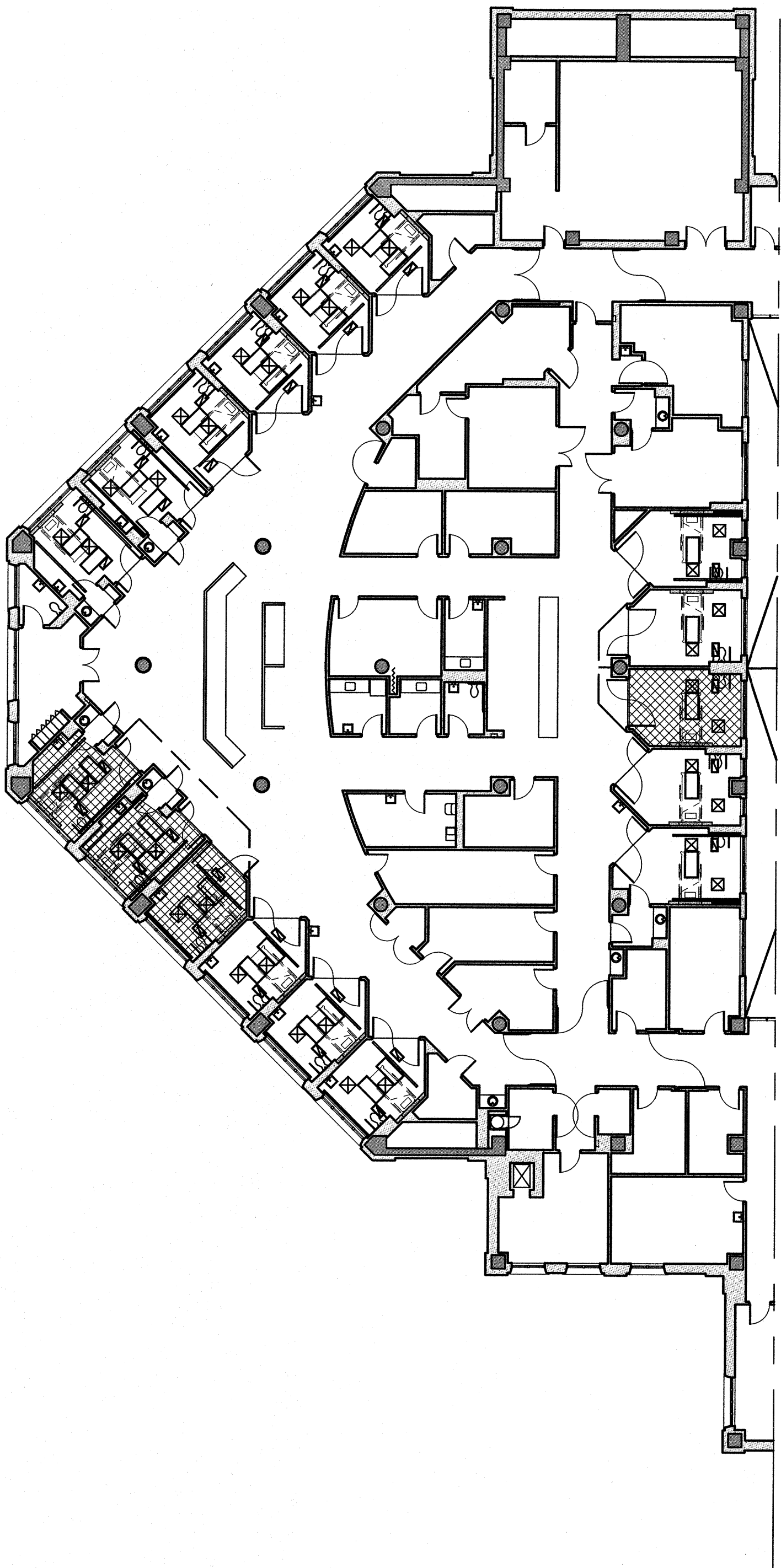
PHASING LEGEND

- CONSTRUCTION BARRIER TO BE APPROVED BY AND COORDINATED WITH INFECTION CONTROL NURSE AND RESIDENT C.O.R.
- [Hatched Box] EXTENT OF WORK WITHIN A DESIGNATED PHASE.



4 PHASE II - FOURTH FLOOR (4 WEST)
1/16" = 1'-0"

2 PHASE I - FOURTH FLOOR (4 WEST)
1/16" = 1'-0"



3 PHASE II - THIRD FLOOR (3 WEST)
1/16" = 1'-0"

1 PHASE I - THIRD FLOOR (3 WEST)
1/16" = 1'-0"

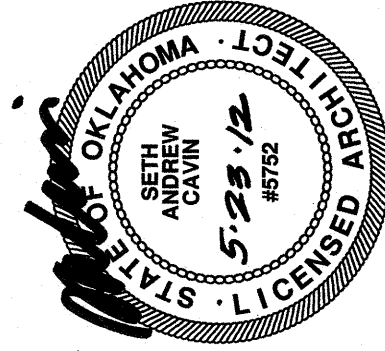
Revisions	Date

ARCHITECTS/ENGINEERS/CONSULTANTS:

ARCHITECT:
SPUR DESIGN LLC
7700 North Hudson Ave., Suite 9
Oklahoma City, Oklahoma 73116

MEP ENGINEER:
Lee & Browne Consulting Engineers, Inc.
1207 S. Sheridan Road
Tulsa, Oklahoma 74112

HEALTHCARE CONSULTANT:
JUNK ARCHITECTS
802 Broadway, 9th Floor
Kansas City, Missouri 64105



OKLAHOMA CERTIFICATE OF AUTHORITY: 02295

Spur DESIGN

7700 NORTH HUDSON AVENUE, SUITE 9
OKLAHOMA CITY, OK 73116
PHONE: 405.962.6300
WWW.SPURDESIGN.COM

PHASE I PLANS
PHASE II PLANS

Project Title	ICU Headwall Relocation
Jack C. Montgomery VA Medical Center	
Location	VAMC, Muskogee, OK
Date	5/23/12
Checked	SAC
Drawn	LLA

Project Number	623-10-107
Building Number	53
Drawing Number	PH010
Sheet	2 OF 38

