

2 PARTIAL THIRD FLOOR REFLECTED CEILING PLAN
1/4" = 1'-0"

GENERAL RCP NOTES

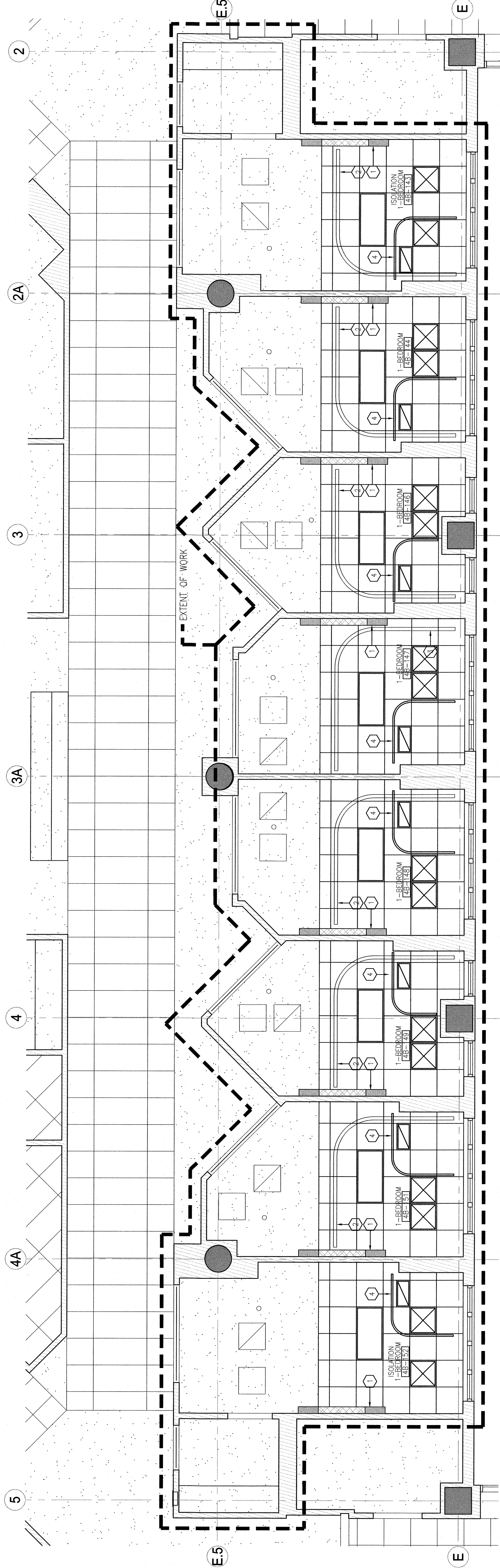
1. NEW ACOUSTICAL CEILING HEIGHTS TO MATCH ORIGINAL HEIGHTS
2. REFER TO ELECTRICAL AND MECHANICAL DRAWINGS FOR ADDITIONAL INFORMATION

SPECIFIC RCP NOTES

- 1. NEW HEADWALL INSTALLATION
- 2. EXISTING PATIENT LIFT TO REMAIN
- 3. RELOCATED EXISTING PATIENT LIFT RAIL & SUPPORT SYSTEM
- 4. REINSTALLED CURTAIN TRACK
- 5. EXISTING DIFFUSERS

LEGEND

- EXISTING BUILDING STRUCTURE
- EXISTING WALLS TO REMAIN
- NEW 2X2 ACOUSTIC CEILING SYSTEM
- REINSTALLED 2X4 FLUORESCENT LIGHTING FIXTURE
- NEW SUPPLY AIR DIFFUSER
- NEW DIFFUSER
- NOTE THAT APPLIES TO SPECIFIC OBJECT
- NOTE THAT APPLIES TO ENTIRE ROOM



1 PARTIAL FOURTH FLOOR REFLECTED CEILING PLAN
1/4" = 1'-0"

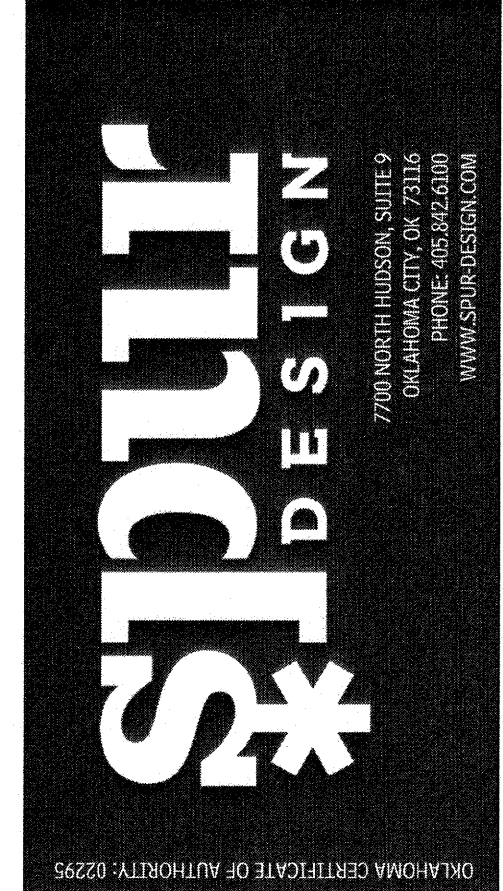
Revisions	Date

ARCHITECTS/ENGINEERS/CONSULTANTS:

ARCHITECT:
SPUR DESIGN LLC
1000 North Hudson, Suite 9
Tulsa, Oklahoma 74116
Oklahoma City, Oklahoma 73118

MEP ENGINEER:
Lee & Browne Consulting Engineers, Inc.
1000 North Hudson, Suite 9
Tulsa, Oklahoma 74116
Oklahoma City, Oklahoma 74118

HEALTHCARE CONSULTANT:
JUNK ARCHITECTS
1000 North Hudson, Suite 9
Tulsa, Oklahoma 74116
Oklahoma City, Oklahoma 74118



PARTIAL THIRD AND FOURTH
FLOOR REFLECTED CEILING PLANS

Project Title	ICU Headwall Relocation
Project Number	623-10-107
Building Number	53
Location	Y.A.M.C. Muskogee, OK
Date	5/23/12
Checked	SAC
Drawn	LLA

Drawing Number
A1504
Sheet 11 OF 38

