[illegible]

ARCHITECTS/ENGINEERS/CONSULTANTS:

MEP ENGINEER:
Lee & Browne Consulting Engineers, Inc.
1207 S. Sheridan Road
Tulsa, Oklahoma 74112
OKLA. CA. 252 EXP. 6/15

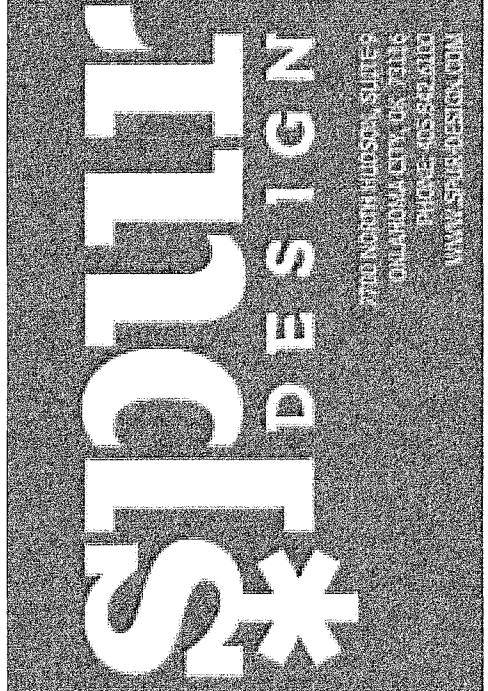
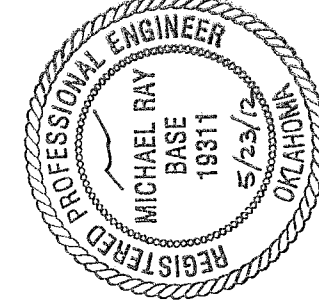
HEALTHCARE CONSULTANT:
JUNK ARCHITECTS
802 Broadway, 5th Floor
Kansas City, Missouri 64105

MEP ENGINEER:
Lee & Browne Consulting Engineers, Inc.
1207 S. Sheridan Road
Tulsa, Oklahoma 74112
OKLA. CA. 252 EXP. 6/15

HEALTHCARE CONSULTANT:
JUNK ARCHITECTS
802 Broadway, 5th Floor
Kansas City, Missouri 64105

MEP ENGINEER:
Lee & Browne Consulting Engineers, Inc.
1207 S. Sheridan Road
Tulsa, Oklahoma 74112
OKLA. CA. 252 EXP. 6/15

HEALTHCARE CONSULTANT:
JUNK ARCHITECTS
802 Broadway, 5th Floor
Kansas City, Missouri 64105



THIRD FLOOR - HVAC PLAN

Project Title	ICU Headwall Relocation Jack C. Montgomery VA Medical Center		
Location	V.A.M.C. Muskogee, OK		
Date	5/23/12	Checked	Drawn

Project Number 623-10-107	Building Number 53	Drawing Number M101 18 of 38 Sheets
------------------------------	-----------------------	---

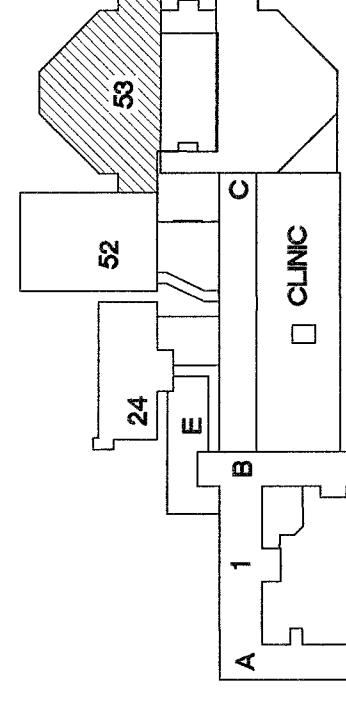
Project Number 623-10-107	Building Number 53	Drawing Number M101 18 of 38 Sheets
-------------------------------------	------------------------------	--

Project Number 623-10-107	Building Number 53	Drawing Number M101 18 of 38 Sheets
-------------------------------------	------------------------------	--

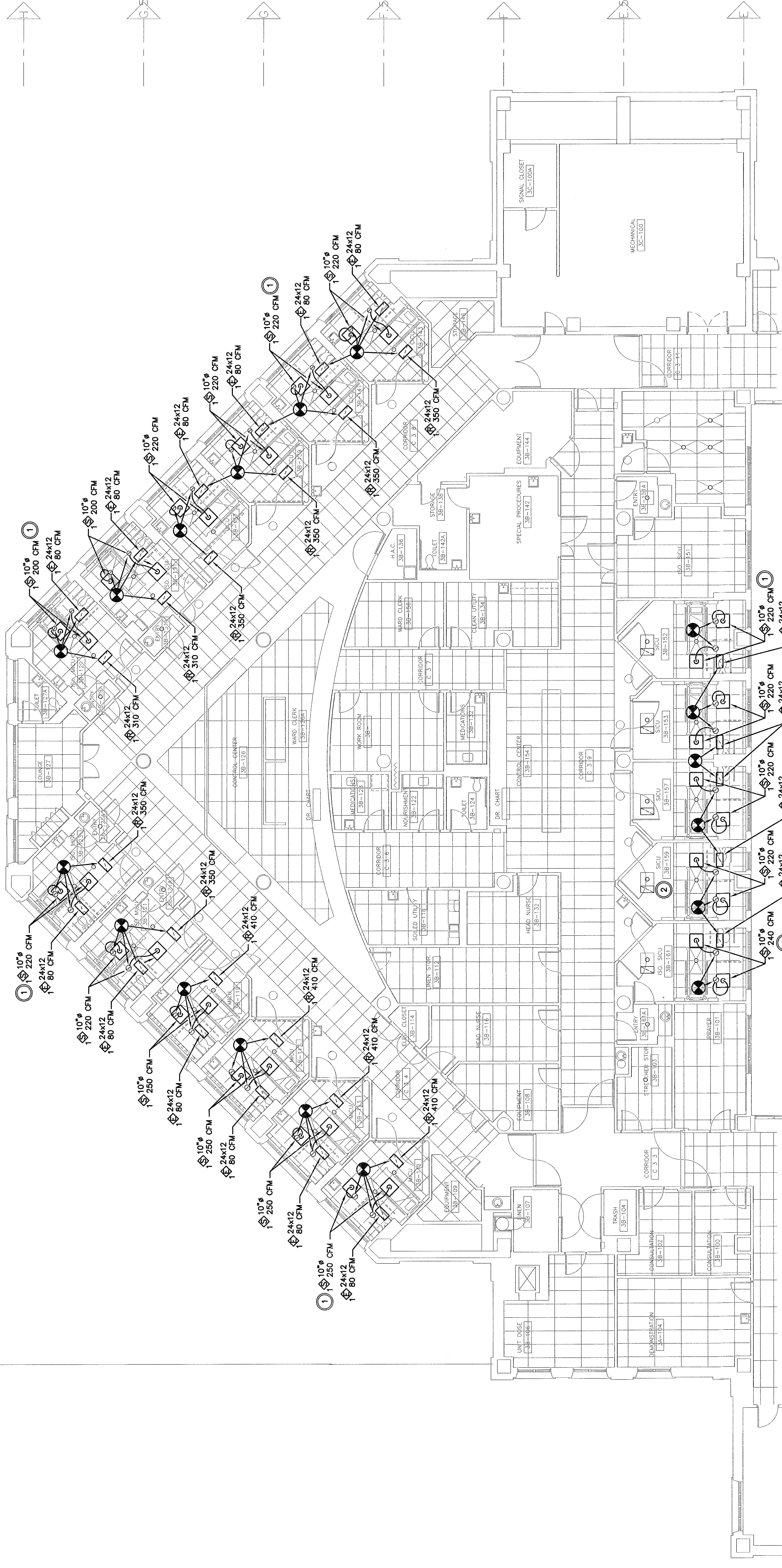
Project Number 623-10-107	Building Number 53	Drawing Number M101 18 of 38 Sheets
-------------------------------------	------------------------------	--

KEY PLAN

SCALE: NO SCALE



REFER TO ARCHITECTURAL DRAWINGS FOR DESCRIPTION OF ALL CONSTRUCTION PHASES.



1 THIRD FLOOR - HVAC PLAN



NOTES:

- 1 PROVIDE NEW FLEXIBLE DUCT TO CONNECT TO EXISTING DUCTWORK (TYPICAL). FIELD VERIFY EXACT LOCATION AND SIZE OF EXISTING DUCT.
- 2 EXISTING TO REMAIN SHOWN LIGHT (TYPICAL).

- ① PROVIDE NEW FLEXIBLE DUCT TO CONNECT TO EXISTING DUCTWORK (TYPICAL). FIELD VERIFY EXACT LOCATION AND SIZE OF EXISTING DUCT.
- ② EXISTING TO REMAIN SHOWN LIGHT (TYPICAL).

2 EXISTING TO REMAIN SHOWN LIGHT (TYPICAL).