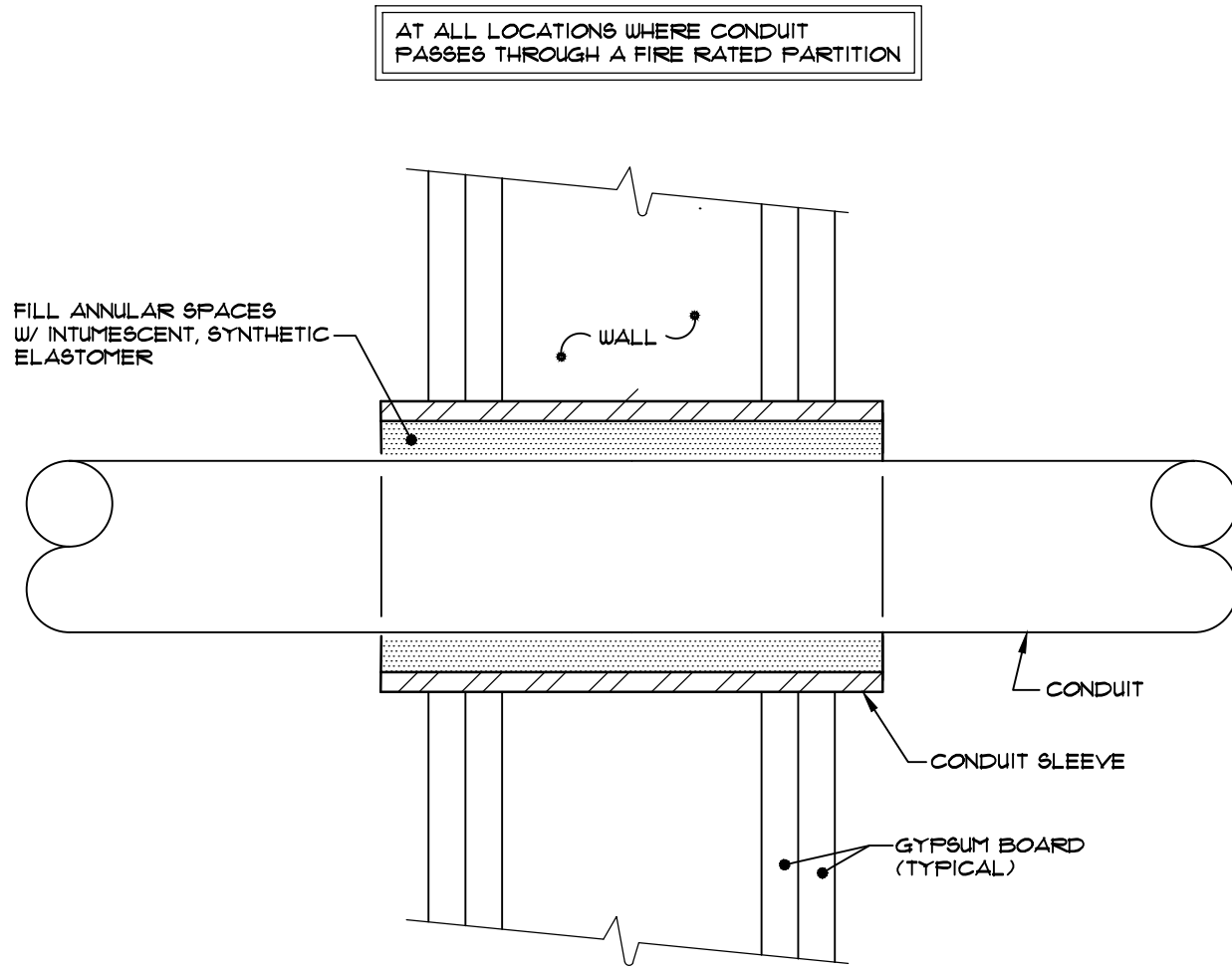


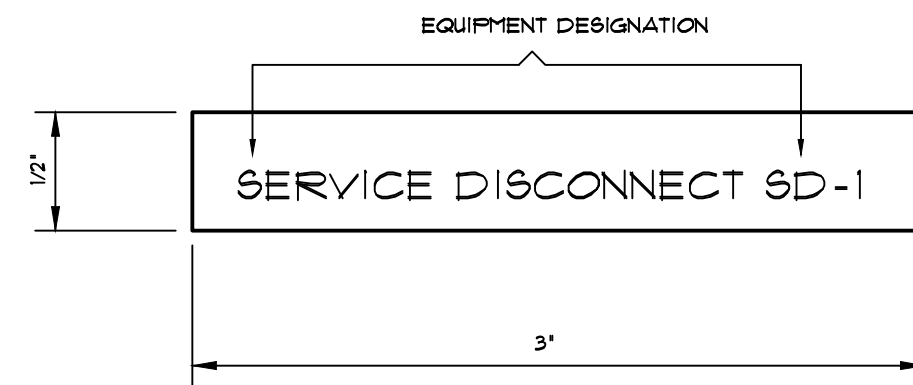
CONDUIT LABEL DETAIL

SCALE: NONE



SLEEVES AT FIRE PARTITIONS

SCALE: NONE

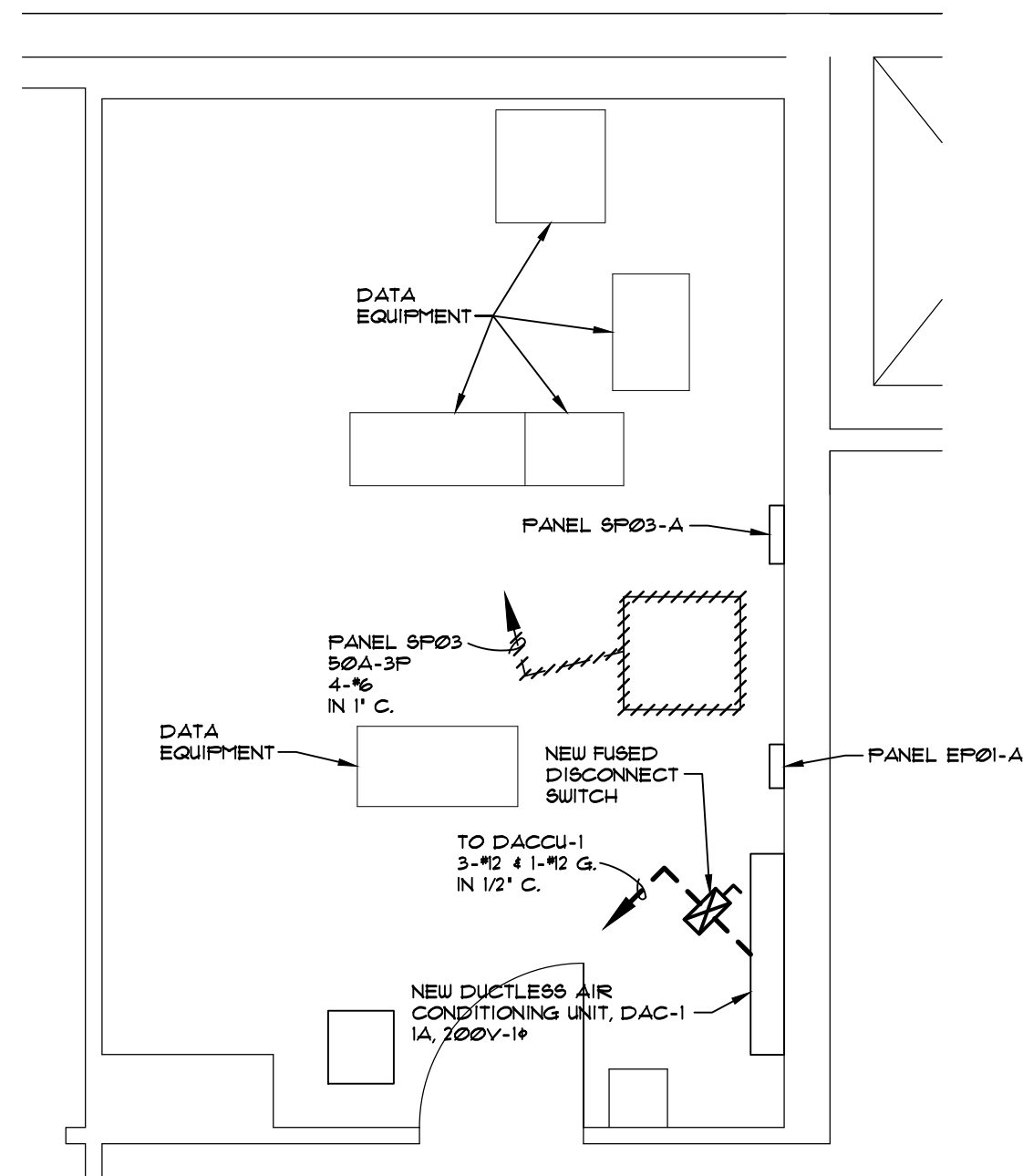


ALL EQUIPMENT (SERVICE DISCONNECT, PANELBOARDS, SAFETY SWITCHES, STARTERS, ETC.) SHALL BE LABELED WITH LAMINATED BLACK PHENOLIC ENGRAVED NAMEPLATE WITH WHITE LETTERS, SCREW MOUNT LABELS ON EQUIPMENT.

EQUIPMENT LABELS

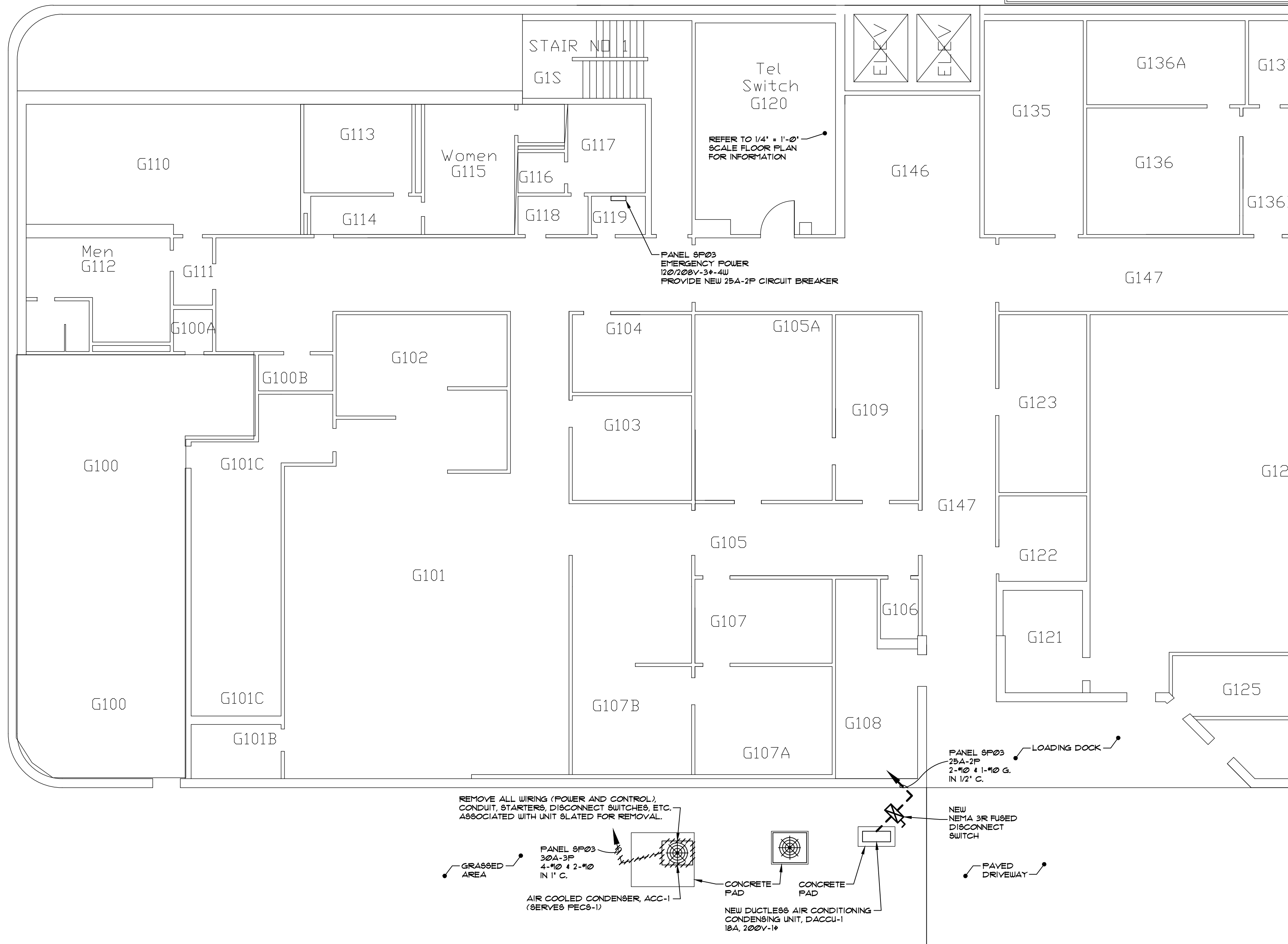
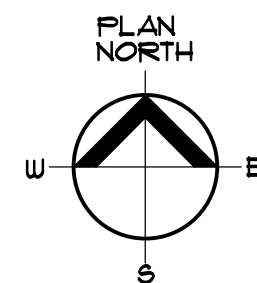
SCALE: NONE

- GENERAL NOTES**
- THOROUGHLY COORDINATE WORK WITH ALL ASSOCIATED WORK EXECUTED BY 'OTHER' CONTRACTORS.
 - EXECUTE ALL WORK IN A FASHION COMPLEMENTARY WITH AND UNOBTUSIVE TO THE OWNER'S NEEDS AND OPERATIONS, RESPECTIVELY.
 - PROVIDE 'PROTECTION' RELATIVE TO ALL APPLICABLE WORK IN ACCORDANCE WITH THE REQUIREMENTS SET FORTH IN DIVISION 1.
 - REMOVE ALL BRANCH CIRCUIT WIRE AND CONDUIT ASSOCIATED WITH EQUIPMENT AND DEVICES SHOWN AND/OR NOTED TO BE REMOVED BACK TO SOURCE.
 - MODIFY BRANCH CIRCUITS WHICH ARE DISRUPTED BY ASSOCIATED REMOVALS TO INSURE THE REQUIRED ARRANGEMENT FOR REMAINING EQUIPMENT AND/OR DEVICES.
 - PROVIDE ALL REQUIRED CUTTING AND INFILL; THEREAFTER, RESTORE ALL AFFECTED SURFACES TO MATCH EXISTING.
 - EACH BRANCH CIRCUIT SHALL BE NO. 12 AWG CONDUCTORS (PHASE, NEUTRAL AND EQUIPMENT GROUND, COMMON OR SHARED NEUTRALS ARE NOT ALLOWED) IN 1/2" CONDUIT WITH 20A-1P CIRCUIT BREAKER (UNLESS OTHERWISE NOTED). ANY BRANCH CIRCUIT WITH A DEVELOPED LENGTH OF ITS FEET OR GREATER SHALL BE NO. 10 AWG CONDUCTORS (PHASE, NEUTRAL AND EQUIPMENT GROUND, COMMON OR SHARED NEUTRALS ARE NOT ALLOWED).
 - CONDUIT SYSTEMS APPLICATION (UNLESS OTHERWISE NOTED):
 - INTERIOR SYSTEMS, ALL SIZES:
 - ELECTRICAL METALLIC TUBING (EMT).
 - EXTERIOR SYSTEMS ABOVE GRADE, ALL SIZES:
 - RIGID STEEL CONDUIT (RSC).
 - TERMINATIONS AT MECHANICAL EQUIPMENT:
 - LIQUIDTIGHT FLEXIBLE METAL CONDUIT (LFMC).
 - EXTERIOR SYSTEMS BELOW GRADE, ALL SIZES:
 - RIGID NON-METALLIC CONDUIT (RNGC).
 - ALL CONDUITS THAT PASS THRU EXTERIOR WALLS OR FROM A CONDITIONED SPACE TO AN UNCONDITIONED SPACE SHALL BE SEALED WATERTIGHT/FIREPROOF WITH SILICONE SEALANT.
 - BRANCH CIRCUITS SERVING DACCU-1 AND DACCU-2 SHALL PARALLEL GLYCOL SOLUTION PIPING AND SHALL BE SUPPORTED FROM THE SAME AND/OR SIMILAR SUPPORTS.
 - BREAKERS DESIGNATED TO SERVE NEW EQUIPMENT (FROM EXISTING PANELS) SHALL BE NEW AND SHALL HAVE CHARACTERISTICS MATCHING EXISTING (BREAKERS) UNLESS OTHERWISE SHOWN OR NOTED.
 - PROVIDE NEW TYPED DIRECTORY FOR ANY EXISTING PANELBOARD WHICH IS MODIFIED IN ANY FASHION INCLUDING A BRANCH CIRCUIT REMOVAL OR ADDITION.
 - ALL ELECTRICAL EQUIPMENT, DEVICES, CONDUIT ETC. SHALL BE RECESSED IN PARTITIONS AND CEILINGS WHEREVER POSSIBLE. EXISTING MASONRY PARTITIONS SHALL BE WIRED THROUGH THE USE OF A TWO PIECE NON-METALLIC RACEWAY SYSTEM COMPLETE WITH ALL ACCESSORIES.
 - CAREFULLY REMOVE CEILING TILES TO GAIN ACCESS ABOVE CEILING\$ IN WORK AREAS, STORE ALL REMOVED CEILING TILES IN A SAFE LOCATION FREE OF ANY DAMAGE CAUSING CONDITIONS AND CAREFULLY REINSTALL AT COMPLETION OF WORK. ANY DAMAGED CEILING TILES SHALL BE REPLACED AT NO COST TO THE OWNER.
 - FLOOR PLAN IS DIAGRAMMATIC IN NATURE, EXACT FIRE ALARM DEVICE LOCATIONS SHALL BE COORDINATED IN THE FIELD WITH OTHER TRADES AND ADJUSTED IN CONSIDERATION OF ANY OBSTRUCTION OR CONDITION WHICH MAY COMPROMISE PROPER DEVICE OPERATION.
 - PROVIDE DUAL-ELEMENT, TIME DELAY, UL CLASS RK5 FUSES FOR MOTOR CIRCUITS AND FAST ACTING, UL CLASS RK-1 FUSES FOR ALL NON-MOTOR CIRCUITS. FUSES SHALL BE 250 VOLT / 600 VOLT TO MATCH OPERATING VOLTAGE OF MOTOR OR FEEDER.
 - PROVIDE ONE SPARE SET OF FUSES COMPLETE WITH FUSE HOLDER AT EVERY NEW FUSE/FUSED DEVICE (SERVICE DISCONNECT, DISCONNECT SWITCHES, SAFETY SWITCHES, PLUG-FUSE BOX COVER UNITS, ETC.) INSTALLED UNDER THIS CONTRACT.



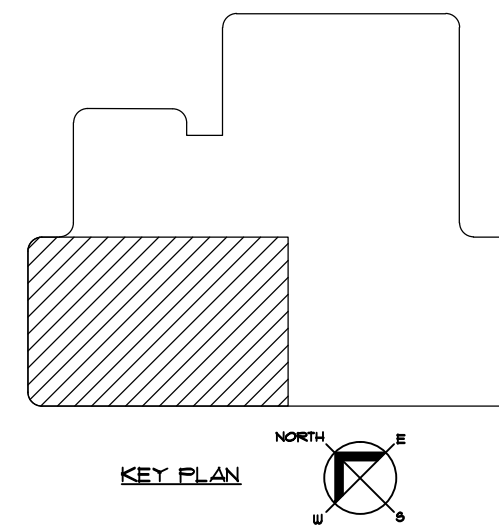
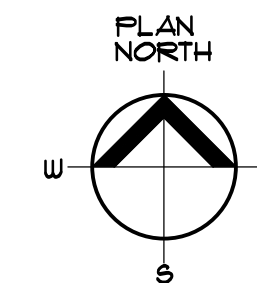
PROPOSED TEL. SWITCH G120 FLOOR PLAN

SCALE: 1/4" = 1'-0"



PROPOSED PARTIAL GROUND FLOOR PLAN

SCALE: 1/8" = 1'-0"

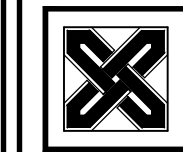


VA MEDICAL CENTER, ROME OUTPATIENT CLINIC

REPAIR ROME CBCC MECHANICAL SYSTEMS PROJECT 528A7-11-724

125 BROOKLEY ROAD

ROME, NEW YORK 13441



Towne Engineering

18 South Street
Utica, New York 13501



VA PROJECT NUMBER	928A7-11-724
REVISION	DATE
DATE	05/23/2013
DRAWN BY	JRM
CHECKED BY	GH6
SCALE	AS NOTED
TE PROJECT NUMBER	3351

SHEET TITLE
PROPOSED
GROUND
FLOOR PLANS

SHEET NUMBER

E-1